

## Product Brief



## ANT-W63-WRT-ccc External Panel-Mount WiFi 6 Antenna

The Linx ANT-W63-WRT-ccc is a low-profile, panel-mount dipole antenna designed for superior performance in WiFi 6/WiFi 6E applications in the 2.4 GHz, 5 GHz and 6 GHz bands.

The ANT-W63-WRT antenna's compact size allows it to be mounted in applications requiring a low profile and external antenna performance, such as WiFi/WLAN applications indoors and outdoors.

The ANT-W63-WRT antenna is designed with an integrated counterpoise that eliminates the need for additional ground plane in the product, making it ideal for applications with non-conductive or RF-transparent enclosures.

Connector options for the ANT-W63-WRT antenna are: SMA plug (male pin), RP-SMA plug (female socket), MHF1/ U.FL-type plug (female socket) or MHF4-type plug (female socket).

### Features

- Performance at 5.15 GHz to 5.85 GHz
  - VSWR:  $\leq 1.4$
  - Peak Gain: 4.5 dBi
  - Efficiency: 84%
- Performance at 5.925 GHz to 7.125 GHz
  - VSWR:  $\leq 2.2$
  - Peak Gain: 6.4 dBi
  - Efficiency: 62%
- Low-profile
  - Mounted height: 27.0 mm (1.10 in)
- Ground Plane independent

ANT-W63-WRT-SMA shown



### Applications

- WiFi/WLAN coverage
  - WiFi 6E (802.11ax)
  - WiFi 6 (802.11ax)
  - WiFi 5 (802.11ac)
  - WiFi 4 (802.11n)
  - 802.11b/g
- 2.4 GHz ISM applications
  - Bluetooth®, ZigBee®
- U-NII bands 1-8
- Internet of Things (IoT) devices
- Smart Home networking
- Sensing and remote monitoring

### Ordering Information

Part Number	Description
ANT-W63-WRT-UFL-150	Antenna, 150 mm (5.91 in) of 1.32 mm coaxial cable, MHF1/U.FL-type plug (female socket)
ANT-W63-WRT-UFL	Antenna, 216 mm (8.50 in) of 1.32 mm coaxial cable, MHF1/U.FL-type plug (female socket)
ANT-W63-WRT-UFL-250	Antenna, 250 mm (9.84 in) of 1.32 mm coaxial cable, MHF1/U.FL-type plug (female socket)
ANT-W63-WRT-MHF4-150	Antenna, 150 mm (5.91 in) of 1.13 mm coaxial cable, MHF4-type plug (female socket)
ANT-W63-WRT-MHF4	Antenna, 216 mm (8.5 in) of 1.13 mm coaxial cable, MHF4-type plug (female socket)
ANT-W63-WRT-RPS	Antenna, 216 mm (8.50 in) of RG-174 coaxial cable, RP-SMA plug (female socket)
ANT-W63-WRT-SMA	Antenna, 216 mm (8.50 in) of RG-174 coaxial cable, SMA plug (male pin)
ANT-W63-WRT-SMA-250	Antenna, 250 mm (9.84 in) of RG-174 coaxial cable, SMA plug (male pin)

Available from Linx Technologies and select distributors and representatives.

Table 1. Electrical Specifications

ANT-W63-WRT	ISM/WiFi	WiFi/U-NII 1-3	WiFi 6E
Frequency Range	2400 MHz to 2485 MHz	5150 MHz to 5850 MHz	5925 MHz to 7125 MHz
VSWR (max.)	1.5	1.4	2.2
Peak Gain (dBi)	4.5	4.5	6.4
Average Gain (dBi)	-1.1	-1.0	-2.5
Efficiency (%)	79	84	62
Polarization	Linear	Radiation	Omnidirectional
Impedance	50 Ω	Max Power	5 W
Wavelength	1/2-wave	Electrical Type	Dipole

Electrical specifications and plots measured with a 102 mm x 102 mm (4.0 in x 4.0 in) reference ground plane.

Table 2. Mechanical Specifications

Part Number	Connection	Coaxial Cable, minimum inside bend radius	Weight
ANT-W63-WRT-UFL	MHF1/U.FL-type plug	1.32 mm: 6.0 mm (0.24 in)	150 mm = 9.3 g (0.33 oz) 216 mm = 9.6 g (0.30 oz) 250 mm = 9.8 g (0.35 oz)
ANT-W63-WRT-MHF4	MHF4-type plug	1.13 mm: 5.0 mm (0.20 in)	150 mm = 9.2 g (0.32 oz) 216 mm = 9.5 g (0.30 oz)
ANT-W63-WRT-RPS	RP-SMA plug	RG-174: 10.2 mm (0.40 in)	216 mm = 14.5 g (0.50 oz)
ANT-W63-WRT-SMA	SMA plug	RG-174: 10.2 mm (0.40 in)	216 mm = 14.5 g (0.50 oz) 250 mm = 15.0 g (0.53 oz)
Operating Temp. Range	-40 °C to +90 °C		
Dimensions	Height: 27.0 mm (1.10 in), Diameter: 19.0 mm (0.75 in)		

## Product Dimensions

Figure 1 provides dimensions for the ANT-W63-WRT series antennas.

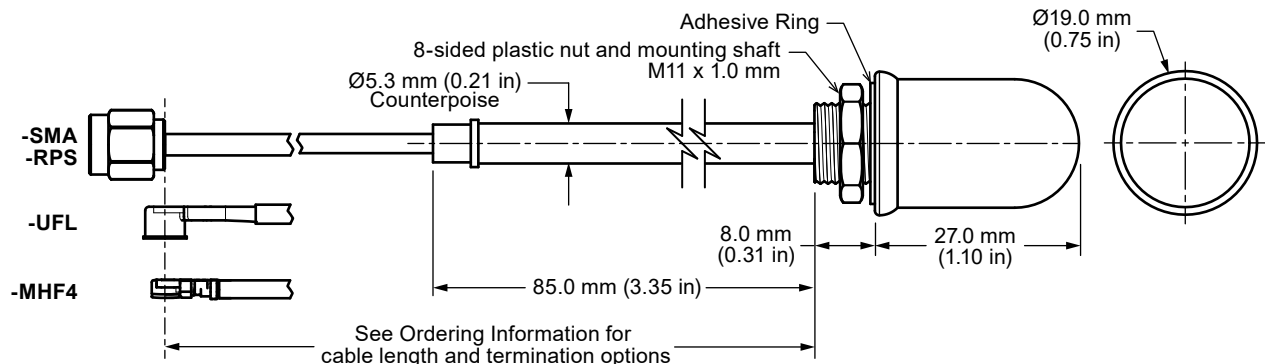


Figure 1. ANT-W63-WRT-ccc Antenna Dimensions

Packaging Information

The ANT-W63-WRT-ccc antenna is placed in a clear plastic sleeve and sealed in clear plastic bags in quantities of 50 pcs. Bags are packaged in cartons of 250 (5 bags). Distribution channels may offer alternative packaging options.

Recommended Mounting

The recommended enclosure mounting dimensions are shown in Figure 2. The ANT-W63-WRT series antenna is supplied with an integrated closed-cell pressure sensitive adhesive ring which helps seal enclosures against external elements. The adhesive ring has a protective plastic backing that must be removed prior to installation. A pull tab has been provided for easy removal of the protective backing. The antenna can be permanently mounted using the provided nut which should be tightened to 4.0 kgf/cm (5 in/lbs) max. The recommended maximum enclosure wall thickness is 4.70 mm (0.188 in).

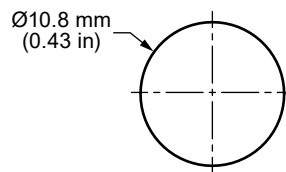


Figure 2. ANT-W63-WRT-ccc Series Antenna Recommended Enclosure Mounting Dimensions

VSWR

Figure 3 provides the voltage standing wave ratio (VSWR) across the antenna bandwidth. VSWR describes the power reflected from the antenna back to the radio. A lower VSWR value indicates better antenna performance at a given frequency. Reflected power is also shown on the right-side vertical axis as a gauge of the percentage of transmitter power reflected back from the antenna.

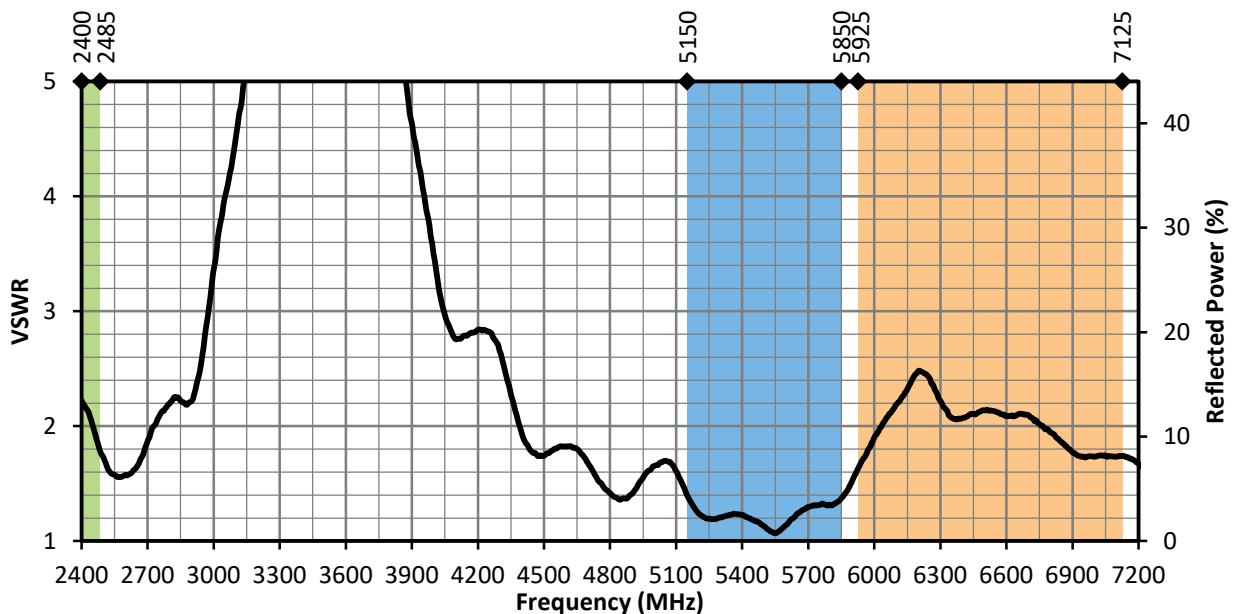


Figure 3. ANT-W63-WRT-ccc VSWR with Frequency Band Highlights

---

**Website:** <http://linxtechnologies.com>  
**Linx Offices:** 159 Ort Lane, Merlin, OR, US 97532  
**Phone:** +1 (541) 471-6256  
**E-MAIL:** [info@linxtechnologies.com](mailto:info@linxtechnologies.com)

---

Linx Technologies reserves the right to make changes to the product(s) or information contained herein without notice. No liability is assumed as a result of their use or application. No rights under any patent accompany the sale of any such product(s) or information.

Wireless Made Simple is a registered trademark of Linx Acquisitions LLC. Bluetooth is a registered trademark of Bluetooth SIG, Inc. ZigBee is a registered trademark of ZigBee Alliance, Inc. Other product and brand names may be trademarks or registered trademarks of their respective owners.

Copyright © 2022 Linx Technologies

All Rights Reserved

