

4

3

2

1

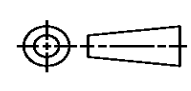
THIS DRAWING IS UNPUBLISHED. RELEASED FOR PUBLICATION
© COPYRIGHT ALL RIGHTS RESERVED.

LOC	DIST	REVISIONS			
P	LTR	DESCRIPTION	DATE	DWN	APVD
	A2	ECR-14-001885	11FEB2014	GK	HMR

REPLACED BY OCEAN STYLE APPLICATOR PART NUMBER 2151367-6

FOR REPLACEMENT PARTS FOR APPLICATOR 1911064
REFER TO ADDITIONAL PAGE(S). SPARE PARTS KIT (IF LISTED)
WILL REMAIN AVAILABLE.

THE REPLACEMENT OCEAN STYLE APPLICATOR HAS THE
SAME TERMINATOR/PRESS INTERFACE AS APPLICATOR
1911064

THIS DRAWING IS A CONTROLLED DOCUMENT.		DWN	GOPALAKRISHNA HV		
DIMENSIONS:		CHK	RAGHAVENDRA		
		APVD	RAGHAVENDRA		
TOLERANCES UNLESS OTHERWISE SPECIFIED:		PRODUCT SPEC	NAME		
0 PLC	±	APPLICATION SPEC	SIDE FEED SYSTEM III APPLICATOR		
1 PLC	±		SIZE	CAGE CODE	DRAWING NO
2 PLC	±		A3		©- 1911064
3 PLC	±		RESTRICTED TO		
4 PLC	±				
ANGLES	±	WEIGHT			
MATERIAL	FINISH	CUSTOMER DRAWING	SCALE	SHEET 1 OF 2	REV A2



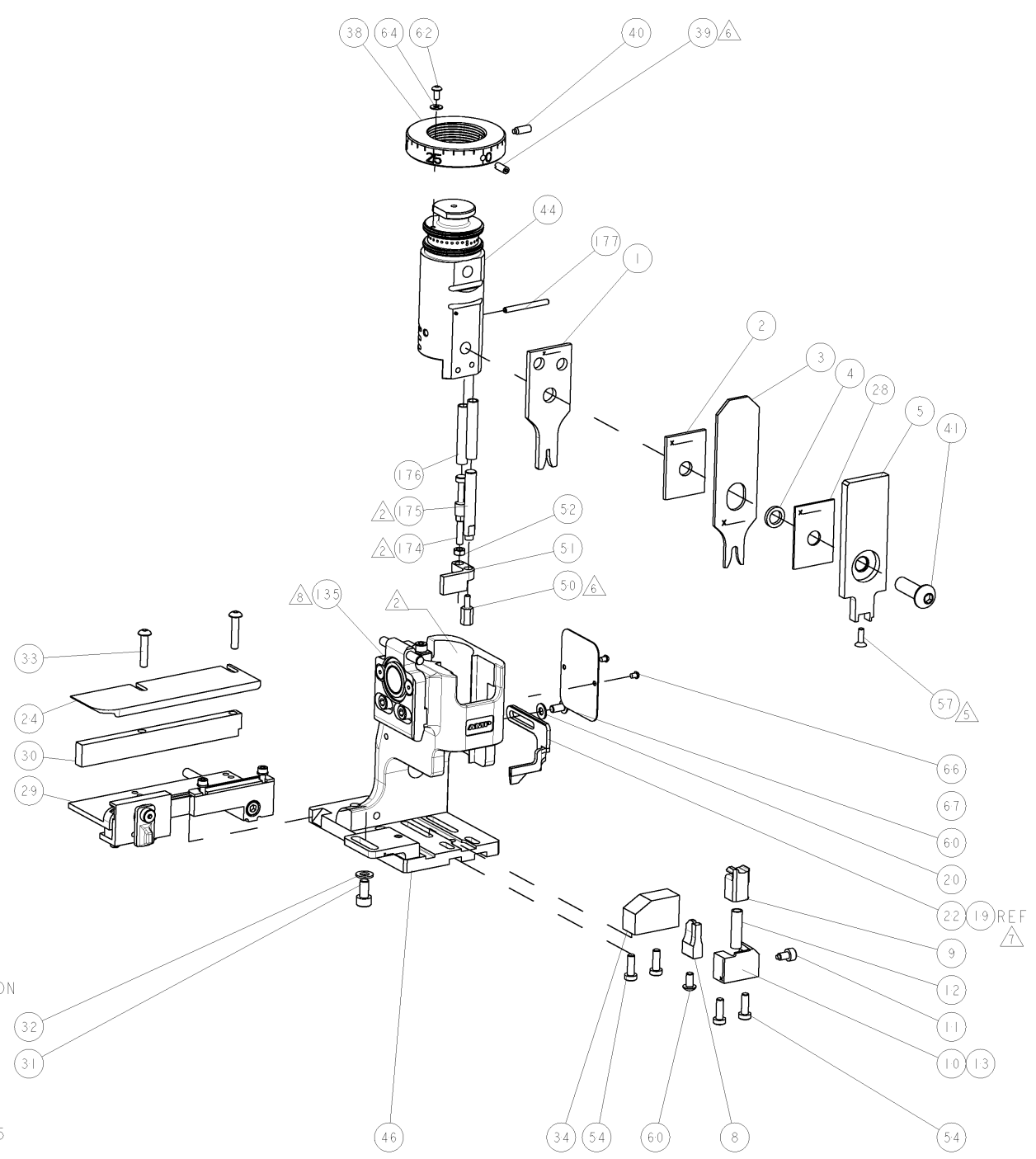
PART NUMBER	REV	DESCRIPTION	PROGRAMMED MEMORY CHIP
1911064-1	A	CUTS CARRIER	8-1911064-1
1911064-6	A	CONTINUOUS CARRIER	8-1911064-6
7-1911064-1	A	-1 AND SPARE PARTS	9-1911064-1
7-1911064-6	A	-6 AND SPARE PARTS	9-1911064-6
7-1911064-7	A	SPARE PARTS KIT	-

APPLICATOR DATA		
CRIMP	SIZE	TYPE
WIRE	2.01 [1.079 INJ]	F
INSUL	3.94 [1.155 INJ]	O

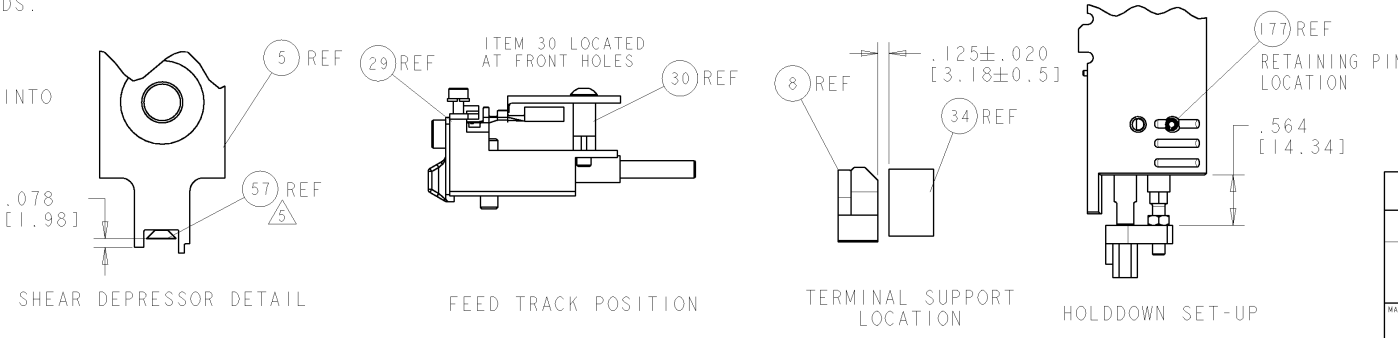
TERMINAL DATA: G&H TERMINAL TYCO ELECTRONICS CRIMP SPEC			
TERMINAL NAME: MKR plus G&H/LEAR			
WIRE STRIP LENGTH	INSULATION DIAMETER RANGE		
4.2-4.5 mm [1.65-.180 INJ]	1.20-2.10mm [1.047-.082 INJ]		
TERMINAL APPL SPEC	NONE		
TERMINALS APPLIED			
TE TERMINAL	G&H TERMINAL	TE SEAL	G&H SEAL
1949351-1	26035	1949515-1	16695

WIRE SIZE	CRIMP HEIGHT
mm [INCH]	mm [INCH]
0.5mm ²	-1.25±.05 [-1.049±.002]
0.75mm ²	-1.35±.05 [-1.053±.002]
1mm ²	-1.45±.05 [-1.057±.002]

FEED FINGER		SET UP GAGE		LOC	DIST	REVISIONS				
1901694-1		1901040-1		A	66	REV	DESCRIPTION	DATE	OWN	APPD
A	RELEASED					230CT2007	RD	ND		
A1	ECR-09-009208					22APR2009	MY	TE		



REV	DESCRIPTION	DATE	OWN	APPD	ITEM NO
-	1 1 1 1 1	1-993111-6	PIN, SLOTTED SPRING 3.0 X 30.0		177
-	2 2 2 2 2	3-22280-7	SPRING, COMPRESSION		176
-	1 1 1 1 1	1752353-1	GUIDE PIN, HOLDDOWN		175
-	1 1 1 1 1	1901680-1	GUIDE PIN, HOLDDOWN		174
-	REF REF REF REF	SEE TABLE	MEMORY CHIP, PROGRAMMED		135
-	1 1 1 1 1	1633565-1	DOCUMENTATION PACKAGE S111		71
-	1 1 1 1 1	1901048-1	TAG, IDENTIFICATION		67
-	2 2 2 2 2	21017-1	SCREW, DRIVE		66
-	1 1 1 1 1	18028-1	WASHER, FLAT, REG M3		64
-	1 1 1 1 1	1655785-9	SCR, BTN SKT HD CAP (M3 X 6)		62
-	2 2 2 2 2	1655785-1	SCR, BTN SKT HD CAP (M4 X 8)		60
-	1 1 1 1 1	985575-3	SCR, FLT SKT HD CAP M3 X 10.0		57
-	4 4 4 4 4	1655783-3	SCR, CAP, SOC HD, LOW HEAD, M4 X 12		54
-	1 1 1 1 1	1-18030-0	NUT, HEX, REG M3.5		52
-	1 1 1 1 1	1901681-1	HOLDDOWN, TERMINAL		51
-	1 1 1 1 1	2-1752354-3	STANDOFF, HOLD-DOWN		50
-	1 1 1 1 1	1752300-1	SF SYSTEM III APPLICATOR		46
-	1 1 1 1 1	1752308-1	RAM		44
-	1 1 1 1 1	2-1655785-3	SCR, BTN SKT HD CAP (M8 X 25)		41
-	1 1 1 1 1	993002-4	SCREW, SET, SFT TIP		40
-	1 1 1 1 1	1962043-1	PLUNGER, BALL, METRIC		39
-	1 1 1 1 1	1752309-2	RING, INSULATION CRIMP		38
-	1 1 1 1 1	1752356-6	SUPPORT, TERMINAL		34
-	2 2 2 2 2	3-1655785-3	SCR, BTN SKT HD CAP (M4 X 20)		33
-	1 1 1 1 1	18028-3	WASHER, FLAT, REG M5		32
-	1 1 1 1 1	5-1655316-3	SCR, SKT HD CAP, M5 X 10.0		31
-	1 1 1 1 1	1320908-2	SPACER, STRIP GUIDE		30
-	1 1 1 1 1	1901087-4	ASSEMBLY, STRIP GUIDE		29
-	1 1 1 1 1	1-455888-0	SPACER, CRIMPER		28
-	1 1 1 1 1	1320928-1	PLATE, STRIP GUIDE		24
-	1 1 1 1 1	1976045-1	STRIPPER		22
-	1 1 1 1 1	18028-2	WASHER, FLAT, REG M4		20
-	REF REF REF REF	1752311-1	STRIPPER		19
-	1 - - - -	1338684-2	SHEAR HOLDER, FRONT		13
-	1 1 1 1 1	3-22280-3	SPRING, COMPRESSION		12
-	1 1 1 1 1	356885-5	STOP, SHEAR		11
-	- 1 - - -	1-1320921-0	SHEAR HOLDER, FRONT, CUT		10
-	1 1 1 1 1	318707-2	FLOATING SHEAR, FRONT		9
-	1 2 2 1 1	6-1633138-5	ANVIL, COMBINATION		8
-	1 1 1 1 1	1338680-2	DEPRESSOR, SHEAR		5
-	1 1 1 1 1	238011-7	BLOCK, CRIMPER SPACER		4
-	1 2 2 1 1	8-683454-6	CRIMPER, INSULATION O		3
-	1 1 1 1 1	1-455888-9	SPACER, CRIMPER		2
-	1 2 2 1 1	1633588-4	CRIMPER, WIRE		1



- △ RECOMMENDED SPARE PARTS.
- △ GREASE BEARING SURFACES LIGHTLY.
- 3. LUBRICATE DAILY PER THE APPLICATOR INSTRUCTION SHEET SUPPLIED WITH THE APPLICATOR.
- △ THIS APPLICATOR APPLIES TERMINAL WITH A SEAL. WIRE INSULATION DIA IS DEPENDENT ON SEAL BEING APPLIED. SEE APPL. SPEC. FOR DETAILS.
- △ APPLY TORQ-SEAL IN ALLEN SOCKET TO FILL HOLE AFTER FLAT HD HAS BEEN ADJUSTED TO CORRECT HEIGHT AT QUALIFICATION. APPLY P/N 1-23419-5 LOCTITE(R) TO THREADS.
- △ APPLY P/N 1-23419-5 LOCTITE(R) TO THREADS.
- △ ITEM 19 - OPTIONAL STRIPPER FOR BENCH MACHINE APPLICATION.
- △ APPLICATOR SPECIFIC DATA TO BE ENTERED INTO BLANK MEMORY CHIP AT ASSEMBLY.

DIMENSIONS (INCHES/mm)		TOLERANCES UNLESS OTHERWISE SPECIFIED:		MATERIAL		FINISH	
0 PLC	±.005	1 PLC	±.004	2 PLC	±.003	3 PLC	±.002
4 PLC	±.001	5 PLC	±.001	6 PLC	±.001	7 PLC	±.001