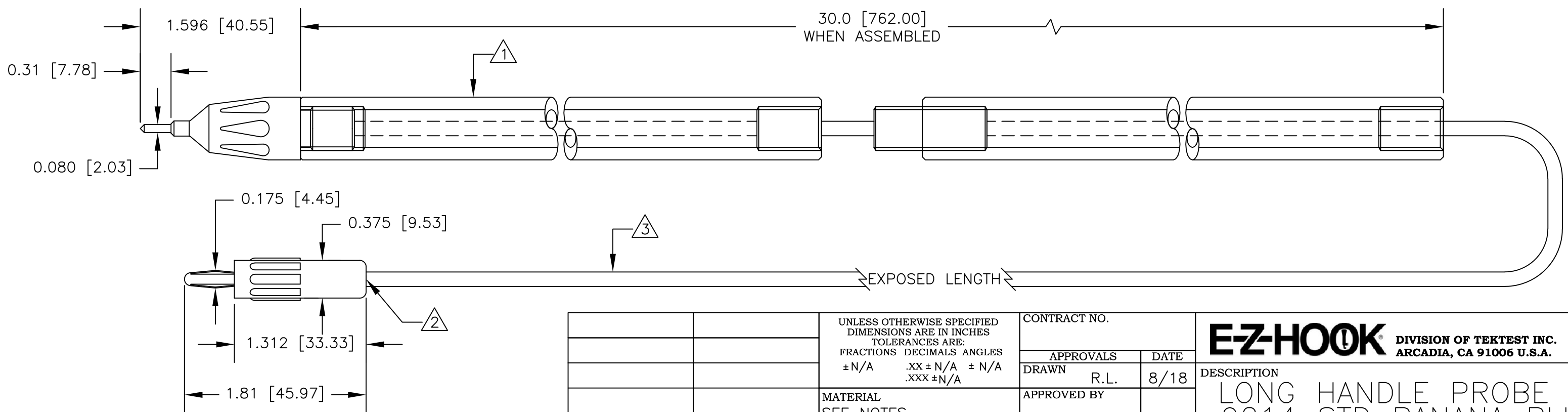


NOTES: UNLESS OTHERWISE SPECIFIED

- P/N: 40 PROBE  
 HOUSING: MOLDED NYLON. AVAILABLE IN BLACK OR RED  
 CONTACT: NICKEL PLATED BRASS.  
 TUBING: CLEAR ACRYLIC  
 ADAPTER : ANODIZED ALUMINUM. AVAILABLE IN BLACK OR RED
- P/N: 9214COLOR  
 HOUSING: MOLDED ACETAL. AVAILABLE IN BLK & RED  
 FRAME: NICKEL PLATED BRASS.  
 CONTACT: NICKEL PLATED BeCu OR PHOSPHOR BRONZE.
- P/N: W-600/COLOR  
 18AWG TINNED COPPER  
 0.144 [3.66] O.D. PVC INSULATION  
 AVAILABLE IN TEN COLORS.
- PERFORMANCE:  
 MAXIMUM CURRENT: 4.0 AMPS  
 MAXIMUM VOLTAGE: HANDHELD: 33VAC/60VDC  
                           HANDS FREE: 3500 VRMS  
 MAXIMUM TEMPERATURE: 176°F (80°C)

LTR	REVISIONS		DATE	APPROVED
	DESCRIPTION			



UNLESS OTHERWISE SPECIFIED DIMENSIONS ARE IN INCHES TOLERANCES ARE: FRACTIONS DECIMALS ANGLES ± N/A .XX ± N/A ± N/A .XXX ± N/A		CONTRACT NO.		<b>E-Z-HOOK</b> DIVISION OF TEKTEST INC. ARCADIA, CA 91006 U.S.A.	
MATERIAL SEE NOTES		APPROVALS DRAWN R.L.	DATE 8/18		
FINISH SEE NOTES		APPROVED BY		DESCRIPTION LONG HANDLE PROBE TO 9214 STD BANANA PLUG	
NEXT ASSY	USED ON	SCALE 1:1		SIZE B	CODE IDENT NO. 08505
APPLICATION		DO NOT SCALE DRAWING		DRAWING NO. BX640	REV. 1