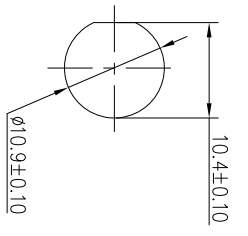
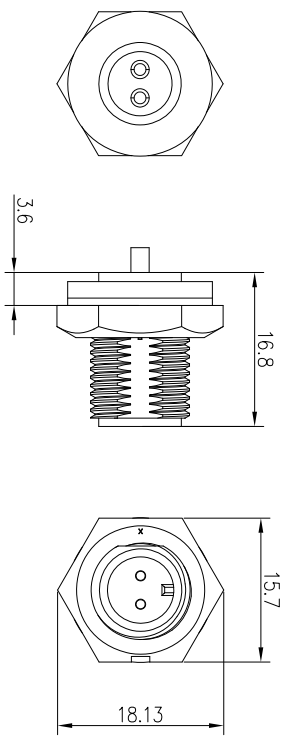


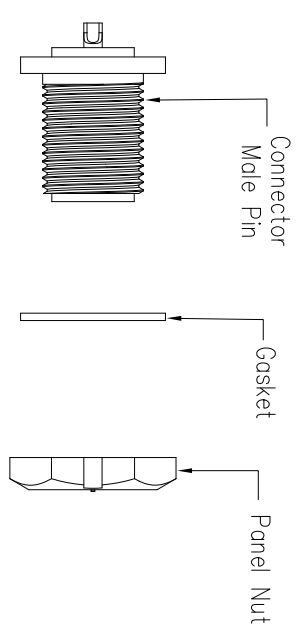
REV.	ECN NO.	DESCRIPTION	SIGN	DATE
C1	N/A	INITIAL DRAWING	Victory	2019/08/20



Recommended Panel Cut-out



Panel T: Max 4.0

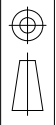


21XXXX515-01

Pin Number

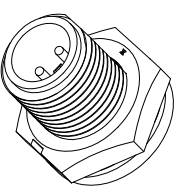
2 Pin	3 Pin	4 Pin
P/N: 21002515-01	P/N: 21003515-01	P/N: 21004515-01

Pin Assignments Front View



DESCRIPTION
Mini Series Screw Type
Front Mount With Male Pin

TOLERANCE .X .XX .XXX ANGLES	±0.25 ±0.15 ±0.05 ±1°	SCALE 4:5	SHEET 1 OF 1
REV	C1	SIZE A4	* : Inspection Item



- Specification:
- 1.Operation Temperature: -45°C~105°C.
 - 2.Insulation Resistance:100M Ωat DC 500V.
 - 3.Contact Resistance:<10m Ω.
 - 4.Withstand Voltage:1500V AC.
 - 5.Operating Current:5A.
 - 6.Operating Voltage:AC 110V.
 - 7.Waterproof Rate:IP67(Mated).
 - 8.Connector: Nylon+GF, Black.
 - 9.Panel Nut:Nylon, Black.
 - 10.Gasket: Silicon, Gray.
 - 11.Male Pin: Copper Alloy,Gold Plated.
 - 12.Torque Rate:0.5~0.7N •m.
 - 13.RoHS Compliant.
 - 14.UL Compliant.
 - 15.Mating Cap P/N: 806-00028-00

CHOGORI

PART NO 21XXXX515-01	DRAWN BY Victory	DATE 2019/08/20
DWG NO	CHECKED BY Ivon	DATE 2019/08/20
CUSTOMER	APPROVED BY Ponson	DATE 2019/08/20