

# PTV 4-HESILED 60 (5X20) - Fuse modular terminal block



1088744

<https://www.phoenixcontact.com/us/products/1088744>

Please be informed that the data shown in this PDF document is generated from our Online Catalog. Please find the complete data in the user documentation. Our General Terms of Use for Downloads are valid.



Fuse modular terminal block, fuse type: Glass / ceramics / ..., fuse type: G / 5 x 20, nom. voltage: 60 V, nominal current: 6.3 A, connection method: Push-in connection, 1 level, Rated cross section: 4 mm<sup>2</sup>, cross section: 0.2 mm<sup>2</sup>- 6 mm<sup>2</sup>, mounting type: NS 35/7,5, NS 35/15, color: black

## Your advantages

- Even with connected conductors, the levers can be opened completely and without problems thanks to the lateral conductor connection.
- The Push-in connection terminal blocks are characterized by the system features of the CLIPLINE complete system and by easy and tool-free wiring of conductors with ferrules or solid conductors
- The compact design and front connection enable wiring in a confined space
- In addition to the testing facility in the double function shaft, all terminal blocks provide an additional test connection
- Tested for railway applications

## Commercial Data

|                                      |               |
|--------------------------------------|---------------|
| Item number                          | 1088744       |
| Packing unit                         | 1 pc          |
| Minimum order quantity               | 50 pc         |
| Sales Key                            | BE23          |
| Product Key                          | BE2334        |
| GTIN                                 | 4055626890623 |
| Weight per Piece (including packing) | 14.076 g      |
| Weight per Piece (excluding packing) | 14.076 g      |
| Customs tariff number                | 85369095      |
| Country of origin                    | CN            |

# PTV 4-HESILED 60 (5X20) - Fuse modular terminal block



1088744

<https://www.phoenixcontact.com/us/products/1088744>

## Technical Data

### Notes

|         |   |
|---------|---|
| General | The current is determined by the fuse used, the voltage by the selected LED.<br>If the fuse is faulty, the downstream circuit will not be disconnected. |
|---------|---|

### Product properties

|                       |                     |
|-----------------------|---------------------|
| Product type          | Fuse terminal block |
| Product family        | PTV                 |
| Area of application   | Railway industry    |
|                       | Machine building    |
|                       | Plant engineering   |
| Number of connections | 2                   |
| Number of rows        | 1                   |
| Potentials            | 1                   |

### Insulation characteristics

|                      |     |
|----------------------|-----|
| Overvoltage category | III |
| Degree of pollution  | 3   |

### Electrical properties

|   |  |
|---|--|
| Fuse type                                       | Glass / ceramics / ...   |
| Rated surge voltage                             | 4 kV   |
| Maximum power dissipation for nominal condition | 1.02 W   |
| Fuse  | G / 5 x 20   |
| LED voltage range                               | 30 V AC/DC ... 60 V AC/DC  |
| LED current range                               | 0.4 mA ... 0.86 mA   |
| Maximum power dissipation                       | max. 1.6 W (with single arrangement of the fuse terminal block in the event of overload)                     |
|   | max. 1.6 W (With interconnected arrangement of several fuse terminal blocks in the event of overload)        |
|   | max. 4 W (with single arrangement of the fuse terminal block in the event of a short-circuit)                |
|   | max. 2.5 W (With interconnected arrangement of several fuse terminal blocks in the event of a short-circuit) |

### Input data

|                   |                           |
|-------------------|---------------------------|
| LED voltage range | 30 V AC/DC ... 60 V AC/DC |
|-------------------|---------------------------|

### Connection data

|                                 |                   |
|---------------------------------|-------------------|
| Number of connections per level | 2                 |
| Nominal cross section           | 4 mm <sup>2</sup> |

### 1 level

|                  |                |
|------------------|----------------|
| Stripping length | 9 mm ... 11 mm |
|------------------|----------------|

# PTV 4-HESILED 60 (5X20) - Fuse modular terminal block



1088744

<https://www.phoenixcontact.com/us/products/1088744>

|   |   |
|---|---|
| Internal cylindrical gage   | A4  |
| Connection in acc. with standard  | IEC 60947-7-3   |
| Conductor cross section rigid   | 0.2 mm <sup>2</sup> ... 6 mm <sup>2</sup>                     |
| Cross section AWG   | 24 ... 10 (converted acc. to IEC)                             |
| Conductor cross section flexible  | 0.2 mm <sup>2</sup> ... 6 mm <sup>2</sup>                     |
| Conductor cross section, flexible [AWG]   | 24 ... 10 (converted acc. to IEC)                             |
| Conductor cross-section flexible (ferrule without plastic sleeve)   | 0.2 mm <sup>2</sup> ... 4 mm <sup>2</sup>                     |
| Flexible conductor cross section (ferrule with plastic sleeve)  | 0.2 mm <sup>2</sup> ... 4 mm <sup>2</sup>                     |
| Conductor cross-section flexible (2 conductors with the same cross-section, with TWIN ferrule and plastic sleeve) | 0.5 mm <sup>2</sup> ... 2.5 mm <sup>2</sup>                   |
| 2 conductors with the same cross section, flexible, with TWIN ferrule with plastic sleeve                         | 0.5 mm <sup>2</sup> ... 2.5 mm <sup>2</sup>                   |
| Nominal current   | 6.3 A   |
| Maximum load current  | 6.3 A (with 6 mm <sup>2</sup> conductor cross section, rigid) |
| Nominal voltage   | 60 V  |
| Nominal cross section   | 4 mm <sup>2</sup>   |

## 1 level Connection cross sections directly pluggable

|   |  |
|---|--|
| Conductor cross section rigid                                     | 0.75 mm <sup>2</sup> ... 6 mm <sup>2</sup> |
| Conductor cross-section flexible (ferrule without plastic sleeve) | 1.5 mm <sup>2</sup> ... 4 mm <sup>2</sup>  |
| Flexible conductor cross section (ferrule with plastic sleeve)    | 1.5 mm <sup>2</sup> ... 4 mm <sup>2</sup>  |

## Dimensions

|                  |         |
|------------------|---------|
| Width            | 6.2 mm  |
| End cover width  | 2.2 mm  |
| Height           | 57.3 mm |
| Height NS 35/15  | 72.3 mm |
| Height NS 35/7,5 | 64.8 mm |
| Length           | 63.4 mm |

## Material specifications

|   |             |
|---|-------------|
| Color   | black       |
| Flammability rating according to UL 94                                  | V0          |
| Insulating material group   | I           |
| Insulating material   | PA          |
| Static insulating material application in cold                          | -60 °C      |
| Temperature index of insulation material (DIN EN 60216-1 (VDE 0304-21)) | 130 °C      |
| Relative insulation material temperature index (Elec., UL 746 B)        | 130 °C      |
| Fire protection for rail vehicles (DIN EN 45545-2) R22                  | HL 1 - HL 3 |
| Fire protection for rail vehicles (DIN EN 45545-2) R23                  | HL 1 - HL 3 |
| Fire protection for rail vehicles (DIN EN 45545-2) R24                  | HL 1 - HL 3 |
| Fire protection for rail vehicles (DIN EN 45545-2) R26                  | HL 1 - HL 3 |
| Calorimetric heat release NFPA 130 (ASTM E 1354)                        | 28 MJ/kg    |
| Surface flammability NFPA 130 (ASTM E 162)                              | passed      |

# PTV 4-HESILED 60 (5X20) - Fuse modular terminal block



1088744

<https://www.phoenixcontact.com/us/products/1088744>

|   |        |
|---|--------|
| Specific optical density of smoke NFPA 130 (ASTM E 662) | passed |
| Smoke gas toxicity NFPA 130 (SMP 800C)                  | passed |

## Mechanical properties

### Mechanical data

|                 |     |
|-----------------|-----|
| Open side panel | Yes |
|-----------------|-----|

## Environmental and real-life conditions

### Oscillation/broadband noise

|                        |  |
|------------------------|--|
| Specification          | DIN EN 50155 (VDE 0115-200):2018-05            |
| Spectrum               | Service life test category 2, bogie-mounted    |
| Frequency              | $f_1 = 5 \text{ Hz}$ to $f_2 = 250 \text{ Hz}$ |
| ASD level              | 6.12 (m/s <sup>2</sup> )/Hz                    |
| Acceleration           | 3.12g  |
| Test duration per axis | 5 h  |
| Test directions        | X-, Y- and Z-axis                              |
| Result                 | Test passed                                    |

### Shocks

|                                |                                   |
|--------------------------------|-----------------------------------|
| Pulse shape                    | Half-sine                         |
| Acceleration                   | 30g                               |
| Shock duration                 | 18 ms                             |
| Number of shocks per direction | 3                                 |
| Test directions                | X-, Y- and Z-axis (pos. and neg.) |
| Result                         | Test passed                       |

### Ambient conditions

|  |   |
|--|---|
| Ambient temperature (operation)          | -60 °C ... 105 °C (max. short-term operating temperature RTI Elec.)       |
| Ambient temperature (storage/transport)  | -25 °C ... 60 °C (for a short time, not exceeding 24 h, -60 °C to +70 °C) |
| Ambient temperature (assembly)           | -5 °C ... 70 °C   |
| Ambient temperature (actuation)          | -5 °C ... 70 °C   |
| Permissible humidity (storage/transport) | 30 % ... 70 %   |

## Standards and regulations

|                                  |               |
|----------------------------------|---------------|
| Connection in acc. with standard | IEC 60947-7-3 |
|----------------------------------|---------------|

## Mounting

|               |           |
|---------------|-----------|
| Mounting type | NS 35/7,5 |
|               | NS 35/15  |

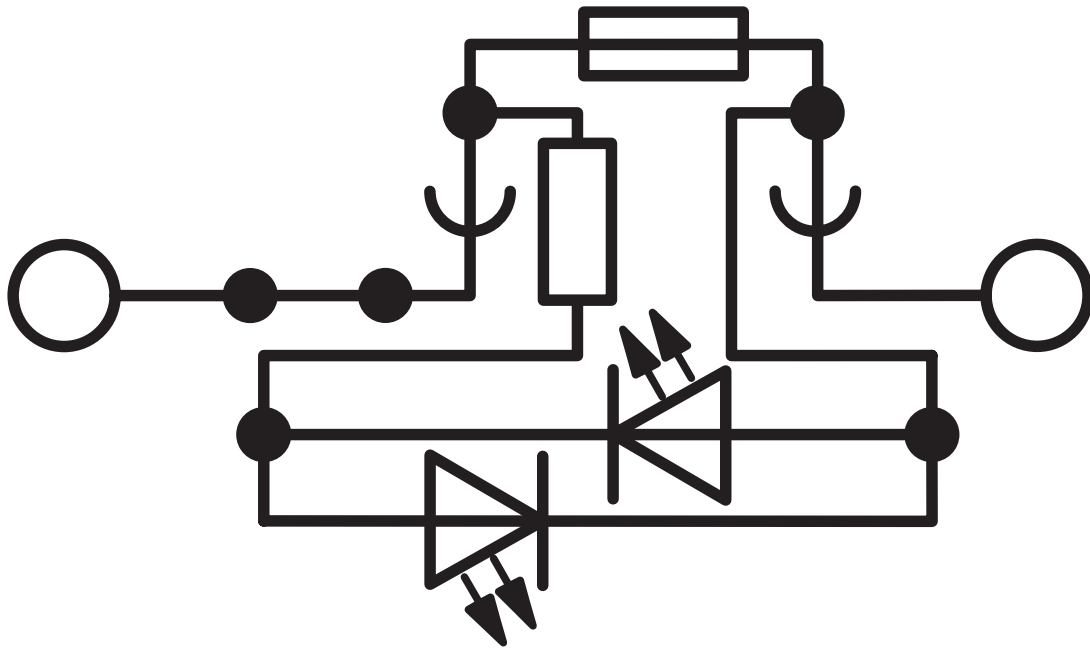
# PTV 4-HESILED 60 (5X20) - Fuse modular terminal block

1088744

<https://www.phoenixcontact.com/us/products/1088744>

## Drawings

Circuit diagram



# PTV 4-HESILED 60 (5X20) - Fuse modular terminal block



1088744

<https://www.phoenixcontact.com/us/products/1088744>

## Approvals

| CSA<br>Approval ID: 13631 |                       |                       |                   |                             |
|---------------------------|-----------------------|-----------------------|-------------------|-----------------------------|
|                           | Nominal Voltage $U_N$ | Nominal Current $I_N$ | Cross Section AWG | Cross Section $\text{mm}^2$ |
| Use group B               | 300 V                 | 16 A                  | 26 - 10           | -                           |
| Use group C               | 300 V                 | 16 A                  | 26 - 10           | -                           |
| Use group D               | 600 V                 | 5 A                   | 26 - 10           | -                           |

| EAC<br>Approval ID: RU C-DE.AI30.B.01102 |  |  |  |  |
|--|--|--|--|--|
|--|--|--|--|--|

| cULus Recognized<br>Approval ID: E60425 |  |  |  |  |
|---|--|--|--|--|
|---|--|--|--|--|

| cULus Recognized<br>Approval ID: E60425 |  |  |  |  |
|---|--|--|--|--|
|---|--|--|--|--|

# PTV 4-HESILED 60 (5X20) - Fuse modular terminal block



1088744

<https://www.phoenixcontact.com/us/products/1088744>

## Classifications

### ECLASS

|             |          |
|-------------|----------|
| ECLASS-11.0 | 27141116 |
| ECLASS-12.0 | 27141116 |
| ECLASS-13.0 | 27250113 |

### ETIM

|          |          |
|----------|----------|
| ETIM 8.0 | EC000899 |
|----------|----------|

### UNSPSC

|             |          |
|-------------|----------|
| UNSPSC 21.0 | 39121400 |
|-------------|----------|

# PTV 4-HESILED 60 (5X20) - Fuse modular terminal block



1088744

<https://www.phoenixcontact.com/us/products/1088744>

## Environmental Product Compliance

|            |   |
|------------|---|
| China RoHS | Environmentally friendly use period: unlimited = EFUP-e |
|            | No hazardous substances above threshold values          |



# PTV 4-HESILED 60 (5X20) - Fuse modular terminal block



1088744

<https://www.phoenixcontact.com/us/products/1088744>

## Accessories

**i** Note: Applying some accessories below might limit this product.

### FBS 2-6 - Plug-in bridge

3030336

<https://www.phoenixcontact.com/us/products/3030336>



Plug-in bridge, pitch: 6.2 mm, number of positions: 2, color: red

**i** Max. current carrying capacity: 32 A

---

### FBS 3-6 - Plug-in bridge

3030242

<https://www.phoenixcontact.com/us/products/3030242>



Plug-in bridge, pitch: 6.2 mm, number of positions: 3, color: red

**i** Max. current carrying capacity: 32 A

# PTV 4-HESILED 60 (5X20) - Fuse modular terminal block

1088744

<https://www.phoenixcontact.com/us/products/1088744>

## FBS 4-6 - Plug-in bridge

3030255

<https://www.phoenixcontact.com/us/products/3030255>



Plug-in bridge, pitch: 6.2 mm, number of positions: 4, color: red

 Max. current carrying capacity: 32 A

---

## FBS 5-6 - Plug-in bridge

3030349

<https://www.phoenixcontact.com/us/products/3030349>



Plug-in bridge, pitch: 6.2 mm, number of positions: 5, color: red

 Max. current carrying capacity: 32 A

---

# PTV 4-HESILED 60 (5X20) - Fuse modular terminal block

1088744

<https://www.phoenixcontact.com/us/products/1088744>

## FBS 6-6 - Plug-in bridge

1008238

<https://www.phoenixcontact.com/us/products/1008238>



Plug-in bridge, One side not fully isolated, pitch: 6.2 mm, number of positions: 6, color: red

 Max. current carrying capacity: 32 A

---

## FBS 10-6 - Plug-in bridge

3030271

<https://www.phoenixcontact.com/us/products/3030271>



Plug-in bridge, pitch: 6.2 mm, number of positions: 10, color: red

 Max. current carrying capacity: 32 A

# PTV 4-HESILED 60 (5X20) - Fuse modular terminal block



1088744

<https://www.phoenixcontact.com/us/products/1088744>

## FBS 20-6 - Plug-in bridge

3030365

<https://www.phoenixcontact.com/us/products/3030365>



Plug-in bridge, pitch: 6.2 mm, number of positions: 20, color: red

 Max. current carrying capacity: 32 A

---

## FBSR 2-6 - Plug-in bridge

3033715

<https://www.phoenixcontact.com/us/products/3033715>



Plug-in bridge, pitch: 6.2 mm, number of positions: 2, color: red

 Max. current carrying capacity: 24 A

# PTV 4-HESILED 60 (5X20) - Fuse modular terminal block

1088744

<https://www.phoenixcontact.com/us/products/1088744>


## FBSR 3-6 - Plug-in bridge

3001594

<https://www.phoenixcontact.com/us/products/3001594>



Plug-in bridge, pitch: 6.2 mm, number of positions: 3, color: red

 Max. current carrying capacity: 24 A

---

## FBSR 4-6 - Plug-in bridge

3001595

<https://www.phoenixcontact.com/us/products/3001595>



Plug-in bridge, pitch: 6.2 mm, number of positions: 4, color: red

 Max. current carrying capacity: 24 A

---

# PTV 4-HESILED 60 (5X20) - Fuse modular terminal block

1088744

<https://www.phoenixcontact.com/us/products/1088744>

## FBSR 5-6 - Plug-in bridge

3001596

<https://www.phoenixcontact.com/us/products/3001596>



Plug-in bridge, pitch: 6.2 mm, number of positions: 5, color: red

 Max. current carrying capacity: 24 A

---

## FBSR 10-6 - Plug-in bridge

3033716

<https://www.phoenixcontact.com/us/products/3033716>



Plug-in bridge, pitch: 6.2 mm, number of positions: 10, color: red

 Max. current carrying capacity: 24 A

---

# PTV 4-HESILED 60 (5X20) - Fuse modular terminal block

1088744

<https://www.phoenixcontact.com/us/products/1088744>


## FBSRH 2-6 - Short-circuit connector

3033812

<https://www.phoenixcontact.com/us/products/3033812>



Short-circuit connector, pitch: 6.2 mm, number of positions: 2, color: red

 Max. current carrying capacity: 24 A

---


## FBS 2-6 BU - Plug-in bridge

3036932

<https://www.phoenixcontact.com/us/products/3036932>



Plug-in bridge, pitch: 6.2 mm, number of positions: 2, color: blue

 Max. current carrying capacity: 32 A

# PTV 4-HESILED 60 (5X20) - Fuse modular terminal block

1088744

<https://www.phoenixcontact.com/us/products/1088744>


## FBS 3-6 BU - Plug-in bridge

3036945

<https://www.phoenixcontact.com/us/products/3036945>



Plug-in bridge, pitch: 6.2 mm, number of positions: 3, color: blue

 Max. current carrying capacity: 32 A

---

## FBS 4-6 BU - Plug-in bridge

3036958

<https://www.phoenixcontact.com/us/products/3036958>



Plug-in bridge, pitch: 6.2 mm, number of positions: 4, color: blue

 Max. current carrying capacity: 32 A

---



# PTV 4-HESILED 60 (5X20) - Fuse modular terminal block

1088744

<https://www.phoenixcontact.com/us/products/1088744>

## FBS 5-6 BU - Plug-in bridge

3036961

<https://www.phoenixcontact.com/us/products/3036961>



Plug-in bridge, pitch: 6.2 mm, number of positions: 5, color: blue

 Max. current carrying capacity: 32 A

---

## FBS 10-6 BU - Plug-in bridge

3032198

<https://www.phoenixcontact.com/us/products/3032198>



Plug-in bridge, pitch: 6.2 mm, number of positions: 10, color: blue

 Max. current carrying capacity: 32 A

# PTV 4-HESILED 60 (5X20) - Fuse modular terminal block

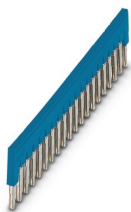
1088744

<https://www.phoenixcontact.com/us/products/1088744>

## FBS 20-6 BU - Plug-in bridge

3032208

<https://www.phoenixcontact.com/us/products/3032208>



Plug-in bridge, pitch: 6.2 mm, number of positions: 20, color: blue

 Max. current carrying capacity: 32 A

---

## FBS 50-6 BU - Plug-in bridge

3032211

<https://www.phoenixcontact.com/us/products/3032211>



Plug-in bridge, pitch: 6.2 mm, number of positions: 50, color: blue

 Max. current carrying capacity: 32 A

# PTV 4-HESILED 60 (5X20) - Fuse modular terminal block



1088744

<https://www.phoenixcontact.com/us/products/1088744>

## D-PTV 2,5/4-MT - End cover

1079918

<https://www.phoenixcontact.com/us/products/1079918>

End cover, length: 63.3 mm, width: 2.2 mm, height: 29.1 mm, color: gray



---

## SZF 1-0,6X3,5 - Screwdriver

1204517

<https://www.phoenixcontact.com/us/products/1204517>

Actuation tool, for ST terminal blocks, also suitable for use as a bladed screwdriver, size: 0.6 x 3.5 x 100 mm, 2-component grip, with non-slip grip



# PTV 4-HESILED 60 (5X20) - Fuse modular terminal block



1088744

<https://www.phoenixcontact.com/us/products/1088744>

## DMET 5X20 - Feed-through connector

3032075

<https://www.phoenixcontact.com/us/products/3032075>



Feed-through metal in the shape of a 5 x 20 mm glass tube fuse insert for use in fuse terminal blocks.

---

## SF-SL 0,6X3,5-100 S-VDE - Screwdriver

1212587

<https://www.phoenixcontact.com/us/products/1212587>



Actuation tool, for ST terminal blocks, VDE insulated, with slimmer insulation integrated in the blade, also suitable for use as a bladed screwdriver, size: 0.6 x 3.5 x 100 mm, 2-component grip, with non-slip grip

# PTV 4-HESILED 60 (5X20) - Fuse modular terminal block



1088744

<https://www.phoenixcontact.com/us/products/1088744>

## WS PT 4 - Warning label

1029563

<https://www.phoenixcontact.com/us/products/1029563>



Warning label, yellow/black, labeled: Lightning flash, mounting type: plug in, for terminal block width: 6.2 mm

---

## NS 35/ 7,5 PERF 2000MM - DIN rail perforated

0801733

<https://www.phoenixcontact.com/us/products/0801733>



DIN rail perforated, acc. to EN 60715, material: Steel, galvanized, passivated with a thick layer, Standard profile, color: silver, Pack of 25 (50 m)

# PTV 4-HESILED 60 (5X20) - Fuse modular terminal block



1088744

<https://www.phoenixcontact.com/us/products/1088744>

## NS 35/ 7,5 UNPERF 2000MM - DIN rail, unperforated

0801681

<https://www.phoenixcontact.com/us/products/0801681>



DIN rail, unperforated, acc. to EN 60715, material: Steel, galvanized, passivated with a thick layer, Standard profile, color: silver, Pack of 25 (50 m)

---

## NS 35/ 7,5 WH PERF 2000MM - DIN rail perforated

1204119

<https://www.phoenixcontact.com/us/products/1204119>



DIN rail perforated, acc. to EN 60715, material: Steel, Galvanized, white passivated, Standard profile, color: silver, Pack of 25 (50 m)

# PTV 4-HESILED 60 (5X20) - Fuse modular terminal block



1088744

<https://www.phoenixcontact.com/us/products/1088744>

## NS 35/ 7,5 WH UNPERF 2000MM-VPE 10 - DIN rail, unperforated

1204122

<https://www.phoenixcontact.com/us/products/1204122>



DIN rail, unperforated, acc. to EN 60715, material: Steel, Galvanized, white passivated, Standard profile, color: silver, Pack of 10 (20 m)

---

## NS 35/ 7,5 AL UNPERF 2000MM - DIN rail, unperforated

0801704

<https://www.phoenixcontact.com/us/products/0801704>



DIN rail, unperforated, acc. to EN 60715, material: Aluminum, uncoated, Standard profile, color: silver, Pack of 25 (50 m)

# PTV 4-HESILED 60 (5X20) - Fuse modular terminal block

1088744

<https://www.phoenixcontact.com/us/products/1088744>

## NS 35/ 7,5 ZN PERF 2000MM - DIN rail perforated

1206421

<https://www.phoenixcontact.com/us/products/1206421>



DIN rail perforated, acc. to EN 60715, material: Steel, galvanized, Standard profile, color: silver, Pack of 25 (50 m)

---

## NS 35/ 7,5 ZN UNPERF 2000MM - DIN rail, unperforated

1206434

<https://www.phoenixcontact.com/us/products/1206434>



DIN rail, unperforated, acc. to EN 60715, material: Steel, galvanized, Standard profile, color: silver, Pack of 25 (50 m)



# PTV 4-HESILED 60 (5X20) - Fuse modular terminal block



1088744

<https://www.phoenixcontact.com/us/products/1088744>

## NS 35/ 7,5 CU UNPERF 2000MM-VPE 10 - DIN rail, unperforated

0801762

<https://www.phoenixcontact.com/us/products/0801762>



DIN rail, unperforated, acc. to EN 60715, material: Copper, uncoated, Standard profile, color: copper-colored, Pack of 10 (20 m)

---

## NS 35/ 7,5 CAP - End cap

1206560

<https://www.phoenixcontact.com/us/products/1206560>

DIN rail end piece, for DIN rail NS 35/7.5



# PTV 4-HESILED 60 (5X20) - Fuse modular terminal block



1088744

<https://www.phoenixcontact.com/us/products/1088744>

## NS 35/15 PERF 2000MM - DIN rail perforated

1201730

<https://www.phoenixcontact.com/us/products/1201730>



DIN rail perforated, similar to EN 60715, material: Steel, galvanized, passivated with a thick layer, Standard profile, color: silver, Pack of 25 (50 m)

---

## NS 35/15 UNPERF 2000MM - DIN rail, unperforated

1201714

<https://www.phoenixcontact.com/us/products/1201714>



DIN rail, unperforated, similar to EN 60715, material: Steel, galvanized, passivated with a thick layer, Standard profile, color: silver, Pack of 25 (50 m)

# PTV 4-HESILED 60 (5X20) - Fuse modular terminal block



1088744

<https://www.phoenixcontact.com/us/products/1088744>

## NS 35/15 WH PERF 2000MM - DIN rail perforated

0806602

<https://www.phoenixcontact.com/us/products/0806602>



DIN rail perforated, similar to EN 60715, material: Steel, Galvanized, white passivated, Standard profile, color: white, Pack of 25 (50 m)

---

## NS 35/15 WH UNPERF 2000MM-VPE 10 - DIN rail, unperforated

1204135

<https://www.phoenixcontact.com/us/products/1204135>



DIN rail, unperforated, similar to EN 60715, material: Steel, Galvanized, white passivated, Standard profile, color: silver, Pack of 10 (20 m)

# PTV 4-HESILED 60 (5X20) - Fuse modular terminal block



1088744

<https://www.phoenixcontact.com/us/products/1088744>

## NS 35/15 AL UNPERF 2000MM - DIN rail, unperforated

1201756

<https://www.phoenixcontact.com/us/products/1201756>



DIN rail, unperforated, similar to EN 60715, material: Aluminum, uncoated, Standard profile, color: silver

---

## NS 35/15 ZN PERF 2000MM - DIN rail perforated

1206599

<https://www.phoenixcontact.com/us/products/1206599>



DIN rail perforated, similar to EN 60715, material: Steel, galvanized, Standard profile, color: silver, Pack of 25 (50 m)

# PTV 4-HESILED 60 (5X20) - Fuse modular terminal block



1088744

<https://www.phoenixcontact.com/us/products/1088744>

## NS 35/15 ZN UNPERF 2000MM - DIN rail, unperforated

1206586

<https://www.phoenixcontact.com/us/products/1206586>



DIN rail, unperforated, similar to EN 60715, material: Steel, galvanized, Standard profile, color: silver, Pack of 25 (50 m)

---

## NS 35/15 CU UNPERF 2000MM-VPE 10 - DIN rail, unperforated

1201895

<https://www.phoenixcontact.com/us/products/1201895>



DIN rail, unperforated, similar to EN 60715, material: Copper, uncoated, Standard profile, color: copper-colored, Pack of 10 (20 m)

# PTV 4-HESILED 60 (5X20) - Fuse modular terminal block



1088744

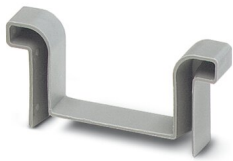
<https://www.phoenixcontact.com/us/products/1088744>

## NS 35/15 CAP - End cap

1206573

<https://www.phoenixcontact.com/us/products/1206573>

DIN rail end piece, for DIN rail NS 35/15



---

## NS 35/15-2,3 UNPERF 2000MM-VPE 10 - DIN rail, unperforated

1201798

<https://www.phoenixcontact.com/us/products/1201798>



DIN rail, unperforated, acc. to EN 60715, material: Steel, galvanized, passivated with a thick layer, Standard profile 2.3 mm, color: silver, Pack of 10 (20 m)

# PTV 4-HESILED 60 (5X20) - Fuse modular terminal block



1088744

<https://www.phoenixcontact.com/us/products/1088744>

## ZB 6:UNBEDRUCKT - Zack marker strip

1051003

<https://www.phoenixcontact.com/us/products/1051003>



Zack marker strip, Strip, white, unlabeled, can be labeled with: PLOTMARK, CMS-P1-PLOTTER, mounting type: snapped, for terminal block width: 6.2 mm, lettering field size: 6.15 x 10.5 mm, Number of individual labels: 10

---

## ZB 6 CUS - Zack marker strip

0824992

<https://www.phoenixcontact.com/us/products/0824992>



Zack marker strip, can be ordered: Strip, white, labeled according to customer specifications, mounting type: snap into tall marker groove, for terminal block width: 6.2 mm, lettering field size: 6.15 x 10.5 mm, Number of individual labels: 10

# PTV 4-HESILED 60 (5X20) - Fuse modular terminal block



1088744

<https://www.phoenixcontact.com/us/products/1088744>

## ZB 6,LGS:FORTL.ZAHLEN - Zack marker strip

1051016

<https://www.phoenixcontact.com/us/products/1051016>



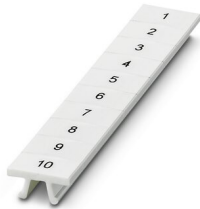
Zack marker strip, Strip, white, labeled, can be labeled with: CMS-P1-PLOTTER, printed horizontally: consecutive numbers 1 ... 10, 11 ... 20, etc. up to 491 ... 500, mounting type: snapped, for terminal block width: 6.2 mm, lettering field size: 6. 15 x 10.5 mm, Number of individual labels: 10

---

## ZB 6,QR:FORTL.ZAHLEN - Zack marker strip

1051029

<https://www.phoenixcontact.com/us/products/1051029>



Zack marker strip, Strip, white, labeled, can be labeled with: CMS-P1-PLOTTER, Printed vertically: consecutive numbers 1 ... 10, 11 ... 20, etc. up to 491 ... 500, mounting type: snapped, for terminal block width: 6.2 mm, lettering field size: 6. 15 x 10.5 mm, Number of individual labels: 10



# PTV 4-HESILED 60 (5X20) - Fuse modular terminal block

1088744

<https://www.phoenixcontact.com/us/products/1088744>

## ZB 6,LGS:GLEICHE ZAHLEN - Zack marker strip

1051032

<https://www.phoenixcontact.com/us/products/1051032>



Zack marker strip, Strip, white, labeled, can be labeled with: CMS-P1-PLOTTER, printed horizontally: Identical numbers 1 or 2, etc. up to 100, mounting type: snapped, for terminal block width: 6.2 mm, lettering field size: 6.15 x 10.5 mm, Number of individual labels: 10

---

## ZB 6,LGS:L1-N,PE - Marker for terminal blocks

1051414

<https://www.phoenixcontact.com/us/products/1051414>



Marker for terminal blocks, Strip, white, labeled, can be labeled with: CMS-P1-PLOTTER, horizontal: L1, L2, L3, N, PE, L1, L2, L3, N, PE, mounting type: snapped, for terminal block width: 6.2 mm, lettering field size: 6.15 x 10.5 mm, Number of individual labels: 10

# PTV 4-HESILED 60 (5X20) - Fuse modular terminal block



1088744

<https://www.phoenixcontact.com/us/products/1088744>

## ZB 6,LGS:U-N - Marker for terminal blocks

1051430

<https://www.phoenixcontact.com/us/products/1051430>



Marker for terminal blocks, Strip, white, labeled, can be labeled with: CMS-P1-PLOTTER, printed horizontally: U, V, W, N, GND, U, V, W, N, GND, mounting type: snapped, for terminal block width: 6.2 mm, lettering field size: 6.15 x 10.5 mm, Number of individual labels: 10

---

## UC-TM 6 - Marker for terminal blocks

0818085

<https://www.phoenixcontact.com/us/products/0818085>



Marker for terminal blocks, Sheet, white, unlabeled, can be labeled with: BLUEMARK ID COLOR, BLUEMARK ID, BLUEMARK CLED, PLOTMARK, CMS-P1-PLOTTER, mounting type: snapped, for terminal block width: 6.2 mm, lettering field size: 5.6 x 10.5 mm, Number of individual labels: 80

# PTV 4-HESILED 60 (5X20) - Fuse modular terminal block



1088744

<https://www.phoenixcontact.com/us/products/1088744>

## UC-TM 6 CUS - Marker for terminal blocks

0824589

<https://www.phoenixcontact.com/us/products/0824589>



Marker for terminal blocks, can be ordered: by sheet, white, labeled according to customer specifications, mounting type: snap into tall marker groove, for terminal block width: 6.2 mm, lettering field size: 5.6 x 10.5 mm, Number of individual labels: 80

---

## UCT-TM 6 - Marker for terminal blocks

0828736

<https://www.phoenixcontact.com/us/products/0828736>



Marker for terminal blocks, Sheet, white, unlabeled, can be labeled with: TOPMARK NEO, TOPMARK LASER, BLUEMARK ID COLOR, BLUEMARK ID, BLUEMARK CLED, THERMOMARK PRIME, THERMOMARK CARD 2.0, THERMOMARK CARD, mounting type: snapped, for terminal block width: 6.2 mm, lettering field size: 5.6 x 10.5 mm, Number of individual labels: 60

# PTV 4-HESILED 60 (5X20) - Fuse modular terminal block



1088744

<https://www.phoenixcontact.com/us/products/1088744>

## UCT-TM 6 CUS - Marker for terminal blocks

0829602

<https://www.phoenixcontact.com/us/products/0829602>



Marker for terminal blocks, can be ordered: by sheet, white, labeled according to customer specifications, mounting type: snap into tall marker groove, for terminal block width: 6.2 mm, lettering field size: 5.6 x 10.5 mm, Number of individual labels: 60

---

## ZBF 6:UNBEDRUCKT - Zack Marker strip, flat

0808710

<https://www.phoenixcontact.com/us/products/0808710>



Zack Marker strip, flat, Strip, white, unlabeled, can be labeled with: PLOTMARK, CMS-P1-PLOTTER, mounting type: snapped, for terminal block width: 6.2 mm, lettering field size: 5.15 x 6.15 mm, Number of individual labels: 10

# PTV 4-HESILED 60 (5X20) - Fuse modular terminal block



1088744

<https://www.phoenixcontact.com/us/products/1088744>

## ZBF 6 CUS - Zack Marker strip, flat

0825027

<https://www.phoenixcontact.com/us/products/0825027>



Zack Marker strip, flat, Strip, can be ordered: Strip, white, labeled according to customer specifications, mounting type: snap into flat marker groove, for terminal block width: 6.2 mm, lettering field size: 5.15 x 6.15 mm, Number of individual labels: 10

---

## UC-TMF 6 - Marker for terminal blocks

0818140

<https://www.phoenixcontact.com/us/products/0818140>



Marker for terminal blocks, Sheet, white, unlabeled, can be labeled with: BLUEMARK ID COLOR, BLUEMARK ID, BLUEMARK CLED, PLOTMARK, CMS-P1-PLOTTER, mounting type: snapped, for terminal block width: 6.2 mm, lettering field size: 5.6 x 5.1 mm, Number of individual labels: 80

# PTV 4-HESILED 60 (5X20) - Fuse modular terminal block



1088744

<https://www.phoenixcontact.com/us/products/1088744>

## UC-TMF 6 CUS - Marker for terminal blocks

0824646

<https://www.phoenixcontact.com/us/products/0824646>



Marker for terminal blocks, can be ordered: by sheet, white, labeled according to customer specifications, mounting type: snap into flat marker groove, for terminal block width: 6.2 mm, lettering field size: 5.6 x 5.1 mm, Number of individual labels: 80

---

## UCT-TMF 6 - Marker for terminal blocks

0828746

<https://www.phoenixcontact.com/us/products/0828746>



Marker for terminal blocks, Sheet, white, unlabeled, can be labeled with: TOPMARK NEO, TOPMARK LASER, BLUEMARK ID COLOR, BLUEMARK ID, BLUEMARK CLED, THERMOMARK PRIME, THERMOMARK CARD 2.0, THERMOMARK CARD, mounting type: snapped, for terminal block width: 6.2 mm, lettering field size: 5.4 x 4.7 mm, Number of individual labels: 60

# PTV 4-HESILED 60 (5X20) - Fuse modular terminal block



1088744

<https://www.phoenixcontact.com/us/products/1088744>

## UCT-TMF 6 CUS - Marker for terminal blocks

0829665

<https://www.phoenixcontact.com/us/products/0829665>



Marker for terminal blocks, can be ordered: by sheet, white, labeled according to customer specifications, mounting type: snap into flat marker groove, for terminal block width: 6.2 mm, lettering field size: 5.4 x 4.7 mm, Number of individual labels: 60

---

## ZBF 6,LGS:FORTL.ZAHLEN - Zack Marker strip, flat

0808749

<https://www.phoenixcontact.com/us/products/0808749>



Zack Marker strip, flat, Strip, white, labeled, printed horizontally: consecutive numbers 1 ... 10, 11 ... 20, etc. up to 91 ... 100, mounting type: snapped, for terminal block width: 6.2 mm, lettering field size: 5.15 x 6.15 mm, Number of individual labels: 10

# PTV 4-HESILED 60 (5X20) - Fuse modular terminal block



1088744

<https://www.phoenixcontact.com/us/products/1088744>

## ZBF 6,QR:FORTL.ZAHLEN - Zack Marker strip, flat

0808765

<https://www.phoenixcontact.com/us/products/0808765>



Zack Marker strip, flat, Strip, white, labeled, Printed vertically: consecutive numbers 1 ... 10, 11 ... 20, etc. up to 91 ... 100, mounting type: snapped, for terminal block width: 6.2 mm, lettering field size: 5.15 x 6.15 mm, Number of individual labels: 10

---

## ZBF 6,LGS:GERADE ZAHLEN - Zack Marker strip, flat

0810834

<https://www.phoenixcontact.com/us/products/0810834>



Zack Marker strip, flat, Strip, white, labeled, printed horizontally: consecutive even numbers 2 ... 20, 22 ... 40, etc. up to 82 ... 100, mounting type: snapped, for terminal block width: 6.2 mm, lettering field size: 5.15 x 6.15 mm, Number of individual labels: 10



# PTV 4-HESILED 60 (5X20) - Fuse modular terminal block



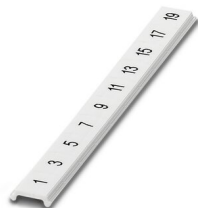
1088744

<https://www.phoenixcontact.com/us/products/1088744>

## ZBF 6,LGS:UNGERADE ZAHLEN - Zack Marker strip, flat

0810876

<https://www.phoenixcontact.com/us/products/0810876>



Zack Marker strip, flat, Strip, white, labeled, printed horizontally: Odd numbers 1 - 19, 21 - 39, etc. up to 81 - 99, mounting type: snapped, for terminal block width: 6.2 mm, lettering field size: 5.15 x 6.15 mm, Number of individual labels: 10

---

## MPS-MT - Test plugs

0201744

<https://www.phoenixcontact.com/us/products/0201744>



Test plugs, with solder connection up to 1 mm<sup>2</sup> conductor cross section, number of positions: 1, color: gray

# PTV 4-HESILED 60 (5X20) - Fuse modular terminal block



1088744

<https://www.phoenixcontact.com/us/products/1088744>

## MPS-IH WH - Insulating sleeve

0201663

<https://www.phoenixcontact.com/us/products/0201663>

Insulating sleeve, color: white



---

## MPS-IH RD - Insulating sleeve

0201676

<https://www.phoenixcontact.com/us/products/0201676>

Insulating sleeve, color: red



# PTV 4-HESILED 60 (5X20) - Fuse modular terminal block

1088744

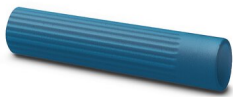
<https://www.phoenixcontact.com/us/products/1088744>

## MPS-IH BU - Insulating sleeve

0201689

<https://www.phoenixcontact.com/us/products/0201689>

Insulating sleeve, color: blue



## MPS-IH YE - Insulating sleeve

0201692

<https://www.phoenixcontact.com/us/products/0201692>

Insulating sleeve, color: yellow



# PTV 4-HESILED 60 (5X20) - Fuse modular terminal block

1088744

<https://www.phoenixcontact.com/us/products/1088744>

## MPS-IH GN - Insulating sleeve

0201702

<https://www.phoenixcontact.com/us/products/0201702>

Insulating sleeve, color: green



## MPS-IH GY - Insulating sleeve

0201728

<https://www.phoenixcontact.com/us/products/0201728>

Insulating sleeve, color: gray



# PTV 4-HESILED 60 (5X20) - Fuse modular terminal block



1088744

<https://www.phoenixcontact.com/us/products/1088744>

## MPS-IH BK - Insulating sleeve

0201731

<https://www.phoenixcontact.com/us/products/0201731>

Insulating sleeve, color: black



---

## PAI-4-FIX-5/6 BU - Test adapter

3035975

<https://www.phoenixcontact.com/us/products/3035975>

4 mm test adapter, for terminal blocks with 5.2 mm and 6.2 mm pitch



# PTV 4-HESILED 60 (5X20) - Fuse modular terminal block



1088744

<https://www.phoenixcontact.com/us/products/1088744>

## PAI-4-FIX-5/6 OG - Test adapter

3035974

<https://www.phoenixcontact.com/us/products/3035974>



4 mm test adapter, for terminal blocks with 5.2 mm and 6.2 mm pitch

---

## PAI-4-FIX-5/6 YE - Test adapter

3035977

<https://www.phoenixcontact.com/us/products/3035977>



4 mm test adapter, for terminal blocks with 5.2 mm and 6.2 mm pitch

# PTV 4-HESILED 60 (5X20) - Fuse modular terminal block



1088744

<https://www.phoenixcontact.com/us/products/1088744>

## PAI-4-FIX-5/6 RD - Test adapter

3035976

<https://www.phoenixcontact.com/us/products/3035976>



4 mm test adapter, for terminal blocks with 5.2 mm and 6.2 mm pitch

---

## PAI-4-FIX-5/6 GN - Test adapter

3035978

<https://www.phoenixcontact.com/us/products/3035978>



4 mm test adapter, for terminal blocks with 5.2 mm and 6.2 mm pitch

# PTV 4-HESILED 60 (5X20) - Fuse modular terminal block



1088744

<https://www.phoenixcontact.com/us/products/1088744>

## PAI-4-FIX-5/6 BK - Test adapter

3035980

<https://www.phoenixcontact.com/us/products/3035980>



4 mm test adapter, for terminal blocks with 5.2 mm and 6.2 mm pitch

---

## PAI-4-FIX-5/6 GY - Test adapter

3035982

<https://www.phoenixcontact.com/us/products/3035982>



4 mm test adapter, for terminal blocks with 5.2 mm and 6.2 mm pitch



# PTV 4-HESILED 60 (5X20) - Fuse modular terminal block



1088744

<https://www.phoenixcontact.com/us/products/1088744>

## PAI-4-FIX-5/6 VT - Test adapter

3035979

<https://www.phoenixcontact.com/us/products/3035979>



4 mm test adapter, for terminal blocks with 5.2 mm and 6.2 mm pitch

---

## PAI-4-FIX-5/6 BN - Test adapter

3035981

<https://www.phoenixcontact.com/us/products/3035981>



4 mm test adapter, for terminal blocks with 5.2 mm and 6.2 mm pitch

# PTV 4-HESILED 60 (5X20) - Fuse modular terminal block



1088744

<https://www.phoenixcontact.com/us/products/1088744>

## PAI-4-FIX-5/6 WH - Test adapter

3035983

<https://www.phoenixcontact.com/us/products/3035983>



4 mm test adapter, for terminal blocks with 5.2 mm and 6.2 mm pitch

---

## PS-6 - Test plugs

3030996

<https://www.phoenixcontact.com/us/products/3030996>



Test plugs, Modular test plug, number of positions: 1, color: red

# PTV 4-HESILED 60 (5X20) - Fuse modular terminal block



1088744

<https://www.phoenixcontact.com/us/products/1088744>

## PS-6/2,3MM RD - Test plugs

3038736

<https://www.phoenixcontact.com/us/products/3038736>

Test plugs, number of positions: 1, color: red



---

## PROJECT COMPLETE - Software

1050453

<https://www.phoenixcontact.com/us/products/1050453>



Intuitive planning and marking software for configuring terminal strips and for professional marking of marking materials for terminal blocks, conductors, cables, devices, and systems. The software is available for download

# PTV 4-HESILED 60 (5X20) - Fuse modular terminal block



1088744

<https://www.phoenixcontact.com/us/products/1088744>

## TMT 6 R - Marker for terminal blocks

0816498

<https://www.phoenixcontact.com/us/products/0816498>



Marker for terminal blocks, Roll, white, unlabeled, can be labeled with: THERMOMARK ROLL 2.0, THERMOMARK ROLL, THERMOMARK ROLL X1, THERMOMARK ROLLMASTER 300/600, THERMOMARK X1.2, THERMOMARK S1.1, perforated, mounting type: snapped, snap into flat marker groove, for terminal block width: 6.2 mm, lettering field size: 6.35 x 6.15 mm, Number of individual labels: 16000

---

## TMT 6 R CUS - Marker for terminal blocks

0824488

<https://www.phoenixcontact.com/us/products/0824488>



Marker for terminal blocks, can be ordered: by line, white, labeled according to customer specifications, mounting type: snap into universal marker groove, snap into flat marker groove, for terminal block width: 6.2 mm, lettering field size: 6.35 x 6.15 mm

# PTV 4-HESILED 60 (5X20) - Fuse modular terminal block



1088744

<https://www.phoenixcontact.com/us/products/1088744>

## TMT (EX9,5)R - Marker for terminal blocks

0828295

<https://www.phoenixcontact.com/us/products/0828295>



Marker for terminal blocks, Roll, white, unlabeled, can be labeled with: THERMOMARK E.300 (D)/600 (D), THERMOMARK ROLL 2.0, THERMOMARK ROLL, THERMOMARK ROLL X1, THERMOMARK ROLLMASTER 300/600, THERMOMARK X1.2, mounting type: snapped, snap into tall marker groove, lettering field size: 9.5 x 50000 mm, Number of individual labels: 1

---

## US-TM 100 - Marker for terminal blocks

0829255

<https://www.phoenixcontact.com/us/products/0829255>



Marker for terminal blocks, Card, white, unlabeled, can be labeled with: BLUEMARK ID COLOR, BLUEMARK ID, THERMOMARK PRIME, THERMOMARK CARD 2.0, THERMOMARK CARD, mounting type: snapped, lettering field size: 104 x 9.8 mm, Number of individual labels: 13

# PTV 4-HESILED 60 (5X20) - Fuse modular terminal block



1088744

<https://www.phoenixcontact.com/us/products/1088744>

## CLIPFIX 35 - End clamp

3022218

<https://www.phoenixcontact.com/us/products/3022218>



Quick mounting end clamp for NS 35/7,5 DIN rail or NS 35/15 DIN rail, with marking option, width: 9.5 mm, color: gray

---

## CLIPFIX 35-5 - End clamp

3022276

<https://www.phoenixcontact.com/us/products/3022276>



Quick mounting end clamp for NS 35/7,5 DIN rail or NS 35/15 DIN rail, with marking option, with parking option for FBS...5, FBS...6, KSS 5, KSS 6, width: 5.15 mm, color: gray

# PTV 4-HESILED 60 (5X20) - Fuse modular terminal block

1088744

<https://www.phoenixcontact.com/us/products/1088744>

## E/NS 35 N - End clamp

0800886

<https://www.phoenixcontact.com/us/products/0800886>

End clamp, width: 9.5 mm, color: gray



---

## CRIMPFOX CENTRUS 6S - Crimping pliers

1213144

<https://www.phoenixcontact.com/us/products/1213144>



Crimping pliers, for uninsulated and insulated ferrules, DIN 46228 Part 1 and 4, from 0.14 mm<sup>2</sup> ... 6 mm<sup>2</sup>, also for TWIN ferrules up to 2 x 4 mm<sup>2</sup>, automatic cross section adjustment, lateral insertion, equipped with fall protection

# PTV 4-HESILED 60 (5X20) - Fuse modular terminal block



1088744

<https://www.phoenixcontact.com/us/products/1088744>

## CRIMPFOX CENTRUS 10S - Crimping pliers

1213154

<https://www.phoenixcontact.com/us/products/1213154>



Crimping pliers, for uninsulated and insulated ferrules, DIN 46228 Part 1 and 4, from 0.14 mm<sup>2</sup> ... 10 mm<sup>2</sup>, also for TWIN ferrules up to 2 x 4 mm<sup>2</sup>, automatic cross section adjustment, lateral insertion, equipped with fall protection

---

## CRIMPFOX CENTRUS 6H - Crimping pliers

1213146

<https://www.phoenixcontact.com/us/products/1213146>



Crimping pliers, for uninsulated and insulated ferrules, DIN 46228 Part 1 and 4, from 0.14 mm<sup>2</sup> ... 6 mm<sup>2</sup>, also for TWIN ferrules up to 2 x 4 mm<sup>2</sup>, automatic cross section adjustment, lateral insertion, equipped with fall protection



# PTV 4-HESILED 60 (5X20) - Fuse modular terminal block



1088744

<https://www.phoenixcontact.com/us/products/1088744>

## CRIMPFOX CENTRUS 10H - Crimping pliers

1213156

<https://www.phoenixcontact.com/us/products/1213156>



Crimping pliers, for uninsulated and insulated ferrules, DIN 46228 Part 1 and 4, from 0.14 mm<sup>2</sup> ... 10 mm<sup>2</sup>, also for TWIN ferrules up to 2 x 4 mm<sup>2</sup>, automatic cross section adjustment, lateral insertion, equipped with fall protection

---

## CRIMPFOX 10S - Crimping pliers

1212045

<https://www.phoenixcontact.com/us/products/1212045>



Crimping pliers, for ferrules without insulating collar according to DIN 46228 Part 1 and ferrules with insulating collar according to DIN 46228 Part 4, 0.14 mm<sup>2</sup> ... 10 mm<sup>2</sup>, unlockable pressure lock, lateral entry

# PTV 4-HESILED 60 (5X20) - Fuse modular terminal block

1088744

<https://www.phoenixcontact.com/us/products/1088744>

## CRIMPFOX 6H - Crimping pliers

1212046

<https://www.phoenixcontact.com/us/products/1212046>



Crimping pliers, for ferrules without insulating collar according to DIN 46228 Part 1 and ferrules with insulating collar according to DIN 46228 Part 4, 0.14 mm<sup>2</sup> ... 6 mm<sup>2</sup>, unlockable pressure lock, lateral entry

---

## CRIMPFOX 2,5-M - Crimping pliers

1212719

<https://www.phoenixcontact.com/us/products/1212719>



Crimping pliers, for ferrules without insulating collar according to DIN 46228 Part 1 and ferrules with insulating collar according to DIN 46228 Part 4, 0.25 mm<sup>2</sup> ... 2.5 mm<sup>2</sup>, lateral entry, trapezoidal crimp

# PTV 4-HESILED 60 (5X20) - Fuse modular terminal block



1088744

<https://www.phoenixcontact.com/us/products/1088744>

## CRIMPFOX 6-M - Crimping pliers

1212720

<https://www.phoenixcontact.com/us/products/1212720>



Crimping pliers, for ferrules without insulating collar according to DIN 46228 Part 1 and ferrules with insulating collar according to DIN 46228 Part 4, 0.25 mm<sup>2</sup> ... 6.0 mm<sup>2</sup>, lateral entry, trapezoidal crimp

---

## CRIMPFOX 6 - Crimping pliers

1212034

<https://www.phoenixcontact.com/us/products/1212034>



Crimping pliers, for ferrules without insulating collar according to DIN 46228 Part 1 and ferrules with insulating collar according to DIN 46228 Part 4, 0.25 mm<sup>2</sup> ... 6.0 mm<sup>2</sup>, lateral entry, trapezoidal crimp

# PTV 4-HESILED 60 (5X20) - Fuse modular terminal block



1088744

<https://www.phoenixcontact.com/us/products/1088744>

## CRIMPFOX 6T - Crimping pliers

1212037

<https://www.phoenixcontact.com/us/products/1212037>



Crimping pliers, for ferrules without insulating collar according to DIN 46228 Part 1 and ferrules with insulating collar according to DIN 46228 Part 4, 0.25 mm<sup>2</sup> ... 6 mm<sup>2</sup>, lateral entry, trapezoidal crimp

---

## CRIMPFOX 6T-F - Crimping pliers

1212038

<https://www.phoenixcontact.com/us/products/1212038>



Crimping pliers, for ferrules without insulating collar according to DIN 46228 Part 1 and ferrules with insulating collar according to DIN 46228 Part 4, 0.25 mm<sup>2</sup> ... 6 mm<sup>2</sup>, front entry, trapezoidal crimp

# PTV 4-HESILED 60 (5X20) - Fuse modular terminal block



1088744

<https://www.phoenixcontact.com/us/products/1088744>

## CRIMPFOX 6S-F - Crimping pliers

1212043

<https://www.phoenixcontact.com/us/products/1212043>



Crimping pliers, for ferrules without insulating collar according to DIN 46228 Part 1 and ferrules with insulating collar according to DIN 46228 Part 4, 0.5 mm<sup>2</sup> ... 6 mm<sup>2</sup>, front entry, square crimp

---

## CRIMPFOX-M - Crimping pliers

1212072

<https://www.phoenixcontact.com/us/products/1212072>



Basic pliers, for accommodating dies for a wide range of type of contacts

---

Phoenix Contact 2023 © - all rights reserved  
<https://www.phoenixcontact.com>

Phoenix Contact USA  
586 Fulling Mill Road  
Middletown, PA 17057, United States  
(+717) 944-1300  
[info@phoenixcon.com](mailto:info@phoenixcon.com)