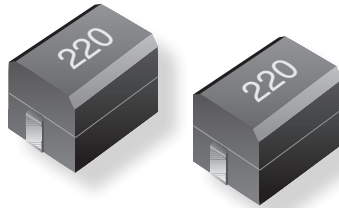


Product Change Notification

INDUCTIVE COMPONENTS



March, 2018

Bourns® Model CM322522 and PM1210 Series Chip Inductors

Package Reel Cover Tape Appearance Change

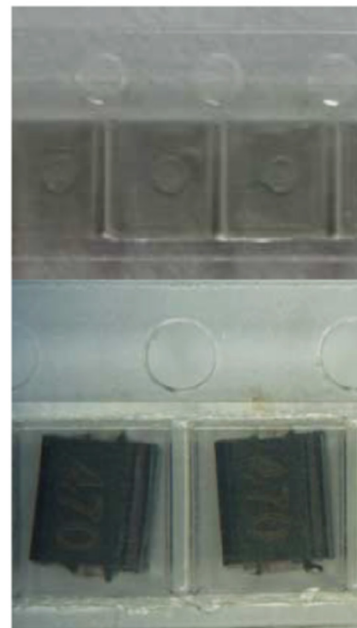
Effective immediately, the Bourns® Model [CM322522](#) and [PM1210](#) series chip inductors' package reel cover tape appearance has changed from transparent to a light gray color. This action is due to the sudden obsolescence of the former color material by the manufacturer. The cover tape material remains unchanged. The affected part numbers are listed in Table 1.

The change in appearance of the package reel cover tape will not affect the form, fit, function, reliability or quality of the inductors.

Current Package Reel Cover Tape
Transparent



Revised Package Reel Cover Tape
Light Gray



If you have any questions or need additional information, please feel free to contact [Customer Service/Inside Sales](#).

Table 1. Affected Part Numbers

CM322522-100JL	CM322522-270KL	CM322522-6R8KL	PM1210-100J-RC
CM322522-100KL	CM322522-2R2JL	CM322522-820JL	PM1210-101J-RC
CM322522-101JL	CM322522-2R2KL	CM322522-820KL	PM1210-120J-RC
CM322522-101KL	CM322522-2R7JL	CM322522-8R2JL	PM1210-121J-RC
CM322522-120JL	CM322522-2R7KL	CM322522-8R2KL	PM1210-150J-RC
CM322522-120KL	CM322522-2R7M	CM322522-R12ML	PM1210-151J-RC
CM322522-121JL	CM322522-2R7ML	CM322522-R15ML	PM1210-180J-RC
CM322522-121KL	CM322522-330JL	CM322522-R18ML	PM1210-1R0J-RC
CM322522-150JL	CM322522-330KL	CM322522-R22KL	PM1210-1R2J-RC
CM322522-150KL	CM322522-390JL	CM322522-R22ML	PM1210-1R5J-RC
CM322522-151JL	CM322522-390KL	CM322522-R27KL	PM1210-1R8J-RC
CM322522-151KL	CM322522-3R3JL	CM322522-R27ML	PM1210-220J-RC
CM322522-180JL	CM322522-3R3KL	CM322522-R33KL	PM1210-270J-RC
CM322522-180KL	CM322522-3R9JL	CM322522-R33ML	PM1210-2R2J-RC
CM322522-1R0JL	CM322522-3R9KL	CM322522-R39KL	PM1210-2R7J-RC
CM322522-1R0KL	CM322522-470JL	CM322522-R39ML	PM1210-330J-RC
CM322522-1R2JL	CM322522-470KL	CM322522-R47KL	PM1210-390J-RC
CM322522-1R2KL	CM322522-4R7JL	CM322522-R47ML	PM1210-3R3J-RC
CM322522-1R2ML	CM322522-4R7KL	CM322522-R56KL	PM1210-3R9J-RC
CM322522-1R5JL	CM322522-560JL	CM322522-R56ML	PM1210-470J-RC
CM322522-1R5KL	CM322522-560KL	CM322522-R66KL	PM1210-4R7J-RC
CM322522-1R8JL	CM322522-5R6J	CM322522-R68KL	PM1210-560J-RC
CM322522-1R8KL	CM322522-5R6JL	CM322522-R68ML	PM1210-5R6J-RC
CM322522-1R8ML	CM322522-5R6KL	CM322522-R82KL	PM1210-680J-RC
CM322522-220JL	CM322522-680JL	CM322522-R82ML	PM1210-6R8J-RC
CM322522-220KL	CM322522-680KL		PM1210-820J-RC
CM322522-270JL	CM322522-6R8JL		PM1210-8R2J-RC