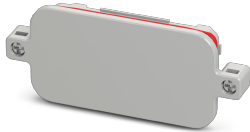


## Front plate - ECS-P-64X80-S-UV-B GY - 1186435

Please be informed that the data shown in this PDF Document is generated from our Online Catalog. Please find the complete data in the user's documentation. Our General Terms of Use for Downloads are valid (<http://phoenixcontact.com/download>)

Screw locking blank faceplate of the ECS Family. IP66/67/69 rated when mated with associated enclosure. Color: Grey (7042), Width: 97 mm, Height: 15 mm, Depth: 42 mm




### Your advantages

- ✓ IP66/IP67 rated with faceplate secured to the base
- ✓ Customizable to meet specific connector requirements for different applications
- ✓ Ultra-compact housing design for a wide range of applications
- ✓ Housing design supports the installation of a range of PCB thicknesses for high application diversity
- ✓ Optional accessories for wall and mast mounting
- ✓ Proven PCB connection technology
- ✓ Integrated tamper protection
- ✓ Suitable for outdoor/indoor applications



### Key Commercial Data

Packing unit	1 pc
GTIN	 4 063151 227371
GTIN	4063151227371
Weight per Piece (excluding packing)	28.000 g
Custom tariff number	85389099
Country of origin	United States

### Technical data

#### Item properties

Type	ECS-P-64X80-S-UV-B GY
Order No.	1186435

## Front plate - ECS-P-64X80-S-UV-B GY - 1186435

### Technical data

#### Item properties

Housing type	outdoor housings
Max. NEMA code to attain	6
IK code	IK08
Impact strength	IK08
Mounting type	Screw locking
Type of locking	screw locking

#### Measurements

Width [ w ]	97 mm
Height [ h ]	15 mm
Depth [ d ]	42 mm

#### Material specifications

Housing material	PC (polycarbonate)
Color (RAL)	gray (7042)
Flammability rating according to UL 94	V0

#### Ambient conditions

Ambient temperature (storage/transport)	-40 °C ... 100 °C
Ambient temperature (operation)	-40 °C ... 100 °C

#### PCB data

Number of PCB holders	1
PCB thickness	1.57 mm

#### Power dissipation, single housing at 20°C

Ambient temperature	20 °C
Power dissipation	11 W

#### Hammer test

Specification	EN 50512:1995
Impact energy	5 J
Number of drop cycles	5

#### Vibration test

Specification	IEC 60068-2-6:2007-12
Frequency	10 - 2000 - 10 Hz
Sweep speed	1 octave/min
Acceleration	15g (61.6 - 2000 Hz)
Test duration per axis	2.5 h
Test directions	X-, Y- and Z-axis

# Front plate - ECS-P-64X80-S-UV-B GY - 1186435

## Technical data

### Shock

Specification	IEC 60068-2-27:2008-02
Pulse shape	Semi-sinusoidal
Acceleration	50g
Shock duration	11 ms
Number of shocks per direction	20
Test directions	X-, Y- and Z-axis (pos. and neg.)

### Test for assessing the risk of fire (glow wire)

Specification	DIN EN 60695-2-11 (VDE 0471-2-11):2014-11
Temperature	850 °C
Time of exposure	30 s

### Degrees of protection provided by enclosures (IP code)

Specification	IEC 60529:1989-11 + AMD 1:1999-11 + AMD 2:2013-08
Result, degree of protection, IP code	IP69 (2 m / 24 h)

### Packaging information

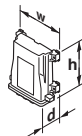
Pieces per package	5
Denomination packing units	Pcs.

### Standards and regulations

Flammability rating according to UL 94	V0
--	----

## Drawings

Dimensional drawing



## Classifications

### eCl@ss

eCl@ss 10.0.1	27182702
eCl@ss 11.0	27182702
eCl@ss 4.0	27180401
eCl@ss 4.1	27180401
eCl@ss 5.0	27180505
eCl@ss 5.1	27180505

## Front plate - ECS-P-64X80-S-UV-B GY - 1186435

### Classifications

#### eCl@ss

eCl@ss 6.0	27180800
eCl@ss 7.0	27182702
eCl@ss 9.0	27182702

#### ETIM

ETIM 3.0	EC001031
ETIM 4.0	EC001031
ETIM 6.0	EC001031
ETIM 7.0	EC001031

#### UNSPSC

UNSPSC 6.01	31261501
UNSPSC 7.0901	31261501
UNSPSC 11	31261501
UNSPSC 12.01	31261501
UNSPSC 13.2	31261501
UNSPSC 18.0	31261501
UNSPSC 19.0	31261501
UNSPSC 20.0	31261501
UNSPSC 21.0	31261501

### Accessories

#### Accessories

#### Housing

##### Electronic housing - ECS-B-64X80-S-UV-NV GY - 1186433



Screw locking non-vented enclosure of the ECS Family. IP66/67/69 rated when mated with associated faceplate. Color: Grey (7042), Width: 97 mm, Height: 86 mm, Depth: 44 mm

##### Electronic housing - ECS-B-64X80-S-UV-V GY - 1196941



Screw locking vented enclosure of the ECS Family. IP66/67/69 rated when mated with associated faceplate. Color: Grey (7042), Width: 97 mm, Height: 86 mm, Depth: 45 mm

## Front plate - ECS-P-64X80-S-UV-B GY - 1186435

### Accessories

---

#### Screwdriver tools

Screwdriver - ECS-SD - 1004302

Screwdriver

