

ITEM	PART#	DESCRIPTION	QTY	UOM
A	50579405	SL Crp Hsg G SR Pos Ltch 5Ckt Opt G	1	PC
B	16020086	SL Fem Crimp Term 22-24 Tin Reel x	5	PC
C	--	PAPER PRINTED PAPER WHITE	1	PC

FROM	TO	DESCRIPTION	COLOR
A1	--	1X22AWG DISC MPPE BK UL11028	BLACK
A2	--	1X22AWG DISC MPPE BK UL11028	BLACK
A3	--	1X22AWG DISC MPPE BK UL11028	BLACK
A4	--	1X22AWG DISC MPPE BK UL11028	BLACK
A5	--	1X22AWG DISC MPPE BK UL11028	BLACK

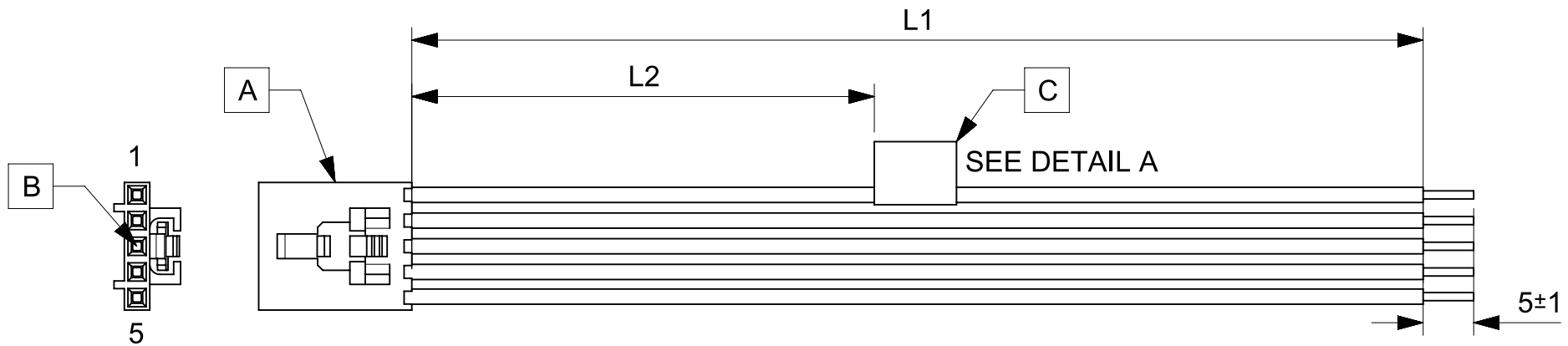


TABLE			
PART NUMBER	L1	L2	TITLE
2162711050	50±3	13 REF	SL POSITIVE LOCK R-S 5CKT 50MM Sn
2162711051	100±5	38 REF	SL POSITIVE LOCK R-S 5CKT 100MM Sn
2162711052	150±8	63 REF	SL POSITIVE LOCK R-S 5CKT 150MM Sn
2162711053	300±10	138 REF	SL POSITIVE LOCK R-S 5CKT 300MM Sn
2162711054	600±10	288 REF	SL POSITIVE LOCK R-S 5CKT 600MM Sn

NOTES

1. Connector view shown is from mating side.
2. Free ends must be stripped, twisted & tinned. The length of tinning is 5±1mm. Tinning dia must be 0.9mm Max.
3. Label text must be 2mm max. in height with Arial font.
4. Label must be wrapped in Flag type on a single cable.

MOLEX P/N
 MOLEX
 BATCH WK/YR
 DETAIL A

REVISION			
DATE	REV	DESCRIPTION	CHANGER
2020/05/05	A	INITIAL RELEASE	ARAJU

FUNCTIONAL SYMBOLS $\frac{F}{A} = 0$ $\frac{F}{E} = 0$ $\frac{F}{P} = 0$ DIVISIONAL SYMBOLS	DIMENSION UNITS mm	SCALE NTS	CURRENT REV DESC: EC NO: 642836 DRWN: ARAJU 2020/05/05 CHK'D: RDESAI01 2020/08/05 APPR: RDESAI01 2020/08/05		
	GENERAL TOLERANCES (UNLESS SPECIFIED) ANGULAR TOL ± °			molex	
	4 PLACES ± 3 PLACES ± 2 PLACES ± 1 PLACE ± 0 PLACES ±			SEE TABLE	
	DRAFT WHERE APPLICABLE MUST REMAIN WITHIN DIMENSIONS			PRODUCT CUSTOMER DRAWING	
INITIAL REVISION: DRWN: ARAJU 2020/05/05 APPR: RDESAI01 2020/08/05		DOCUMENT NUMBER 2162711050	DOC TYPE PSD	DOC PART 000	REVISION A
THIRD ANGLE PROJECTION 		DRAWING A4-SIZE	SERIES 216271	MATERIAL NUMBER SEE TABLE	CUSTOMER GENERAL MARKET
SHEET NUMBER 1 OF 1					