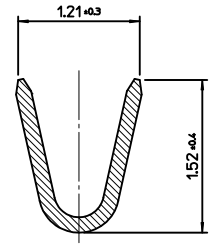
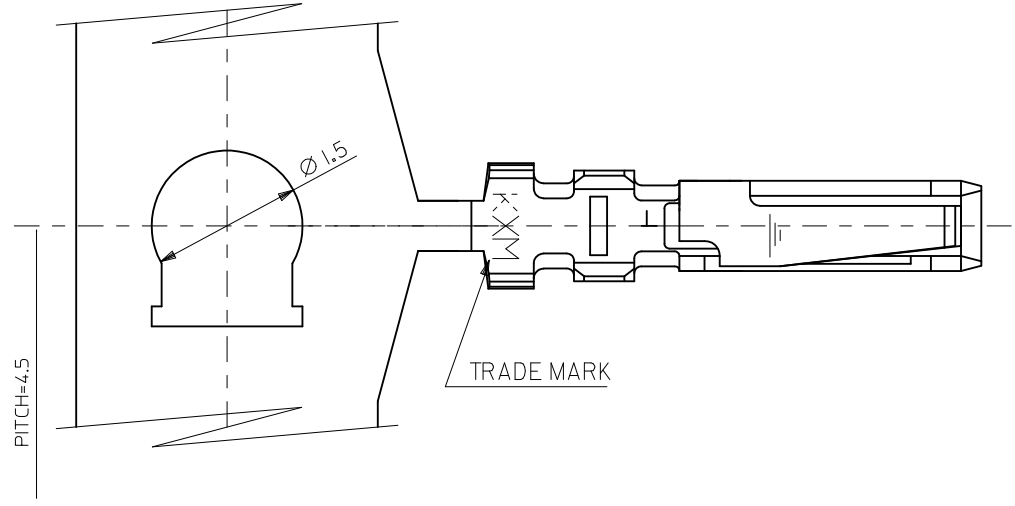
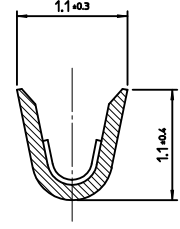


10 9 8 7 6 5 4 3 2 1

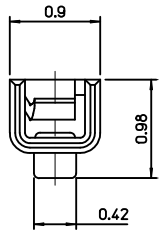
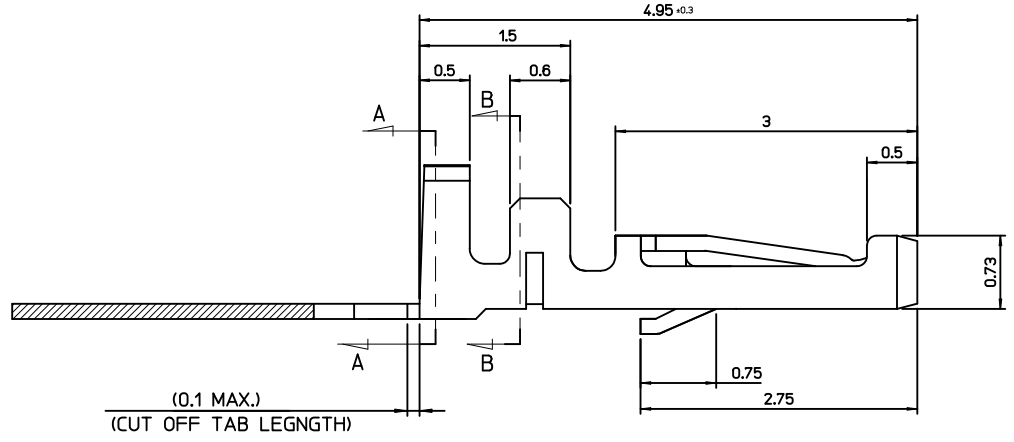
F  
E  
D  
C  
B  
A



**SECTION A-A**



**SECTION B-B**



**NOTES**

1. APPLICABLE HOUSING : 104085-0420
2. MATERIAL : PHOSPHOR BRONZE, 0.15mm THICK'
3. FINISH : PRE-TIN PLATED  
0.8~1.8 MICROMETER MINIMUM, TIN (Sn) OVER  
0.3~0.8 MICROMETER COPPER
4. APPLICABLE WIRE RANGE: AWG#28 -#32

**ORDER NUMBER 104505-8103**

<b>NEW RELEASED</b> IEC NO: 2011/01/28 DRW: NCBCHIN CHKD: SH. CHU APPR:	QUALITY SYMBOLS ▽=0 ◻=0	GENERAL TOLERANCES (UNLESS SPECIFIED)		DIMENSION STYLE <b>MM ONLY</b>		SCALE	DESIGN UNITS	THIRD ANGLE PROJECTION				
			mm	INCH	DRAWN BY	DATE	TITLE	1.25 W-T-B CONN. CRIMP REC' TERMINAL (L=4.95MM)				
		4 PLACES	± ---	± ---	JB. JIN	2010/11/13					METRIC	
		3 PLACES	± ---	± ---	CHECKED BY	DATE					MOLEX INCORPORATED	
	2 PLACES	± 0.20	± ---	SH. CHU	2010/11/13		DOCUMENT NO.					
	1 PLACE	± 0.25	± ---	APPROVED BY	DATE		SHEET NO.					
	ANGULAR ± 1 °		MATERIAL NO.		1045058103		SD-104505-002		1 OF 01			
DRAFT WHERE APPLICABLE MUST REMAIN WITHIN DIMENSIONS		SIZE		THIS DRAWING CONTAINS INFORMATION THAT IS PROPRIETARY TO MOLEX INCORPORATED AND SHOULD NOT BE USED WITHOUT WRITTEN PERMISSION								
A		A3										

9 8 7 6 5 4 3 2 1