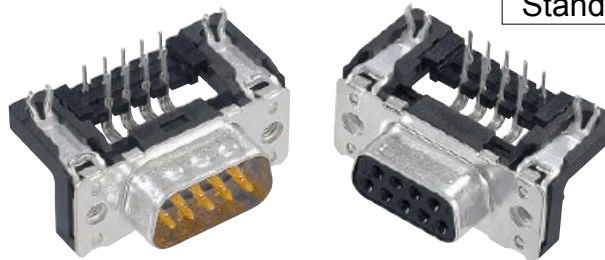
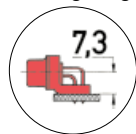


Standard Versions

Number of contacts

Mounting height

9-37



SMC stamped solder pins, angled with grounding board locks

Identification	No. of contacts	Part number		
		Performance level 3	Performance level 2	
<b>Performance levels</b> Explanations see page 05.176 Other performance levels on request				
<b>Male connector</b> metal shell with dimples		2.84 mm pitch	2.84 mm pitch	
	9	09 65 167 781 . 1)	09 65 167 681 . 1)	
	15	09 65 267 781 . 1)	09 65 267 681 . 1)	
	25	09 65 367 781 . 1)	09 65 367 681 . 1)	
	37	09 65 467 781 . 1)	09 65 467 681 . 1)	
		2.54 mm pitch	2.54 mm pitch	
	9	09 65 166 781 .	09 65 166 681 .	
	15	09 65 266 781 .	09 65 266 681 .	
	25	09 65 366 781 .	09 65 366 681 .	
	37	09 65 466 781 .	09 65 466 681 .	
	<b>Female connector</b> metal shell		2.84 mm pitch	2.84 mm pitch
		9	09 66 157 761 . 1)	09 66 157 661 . 1)
		15	09 66 257 761 . 1)	09 66 257 661 . 1)
		25	09 66 357 761 . 1)	09 66 357 661 . 1)
37		09 66 457 761 . 1)	09 66 457 661 . 1)	
		2.54 mm pitch	2.54 mm pitch	
9		09 66 156 761 .	09 66 156 661 .	
15		09 66 256 761 .	09 66 256 661 .	
25		09 66 356 761 .	09 66 356 661 .	
37		09 66 456 761 .	09 66 456 661 .	
Please insert digit for flange thread or fitted female screw locks				
Ø 3.1 mm hole ▶ 0 <sup>1)</sup>				
M3 ▶ 1				
4-40 UNC ▶ 2				
fitted screw locks 4-40 UNC ▶ 3				

D-Sub

<sup>1)</sup> Not normally kept in stock