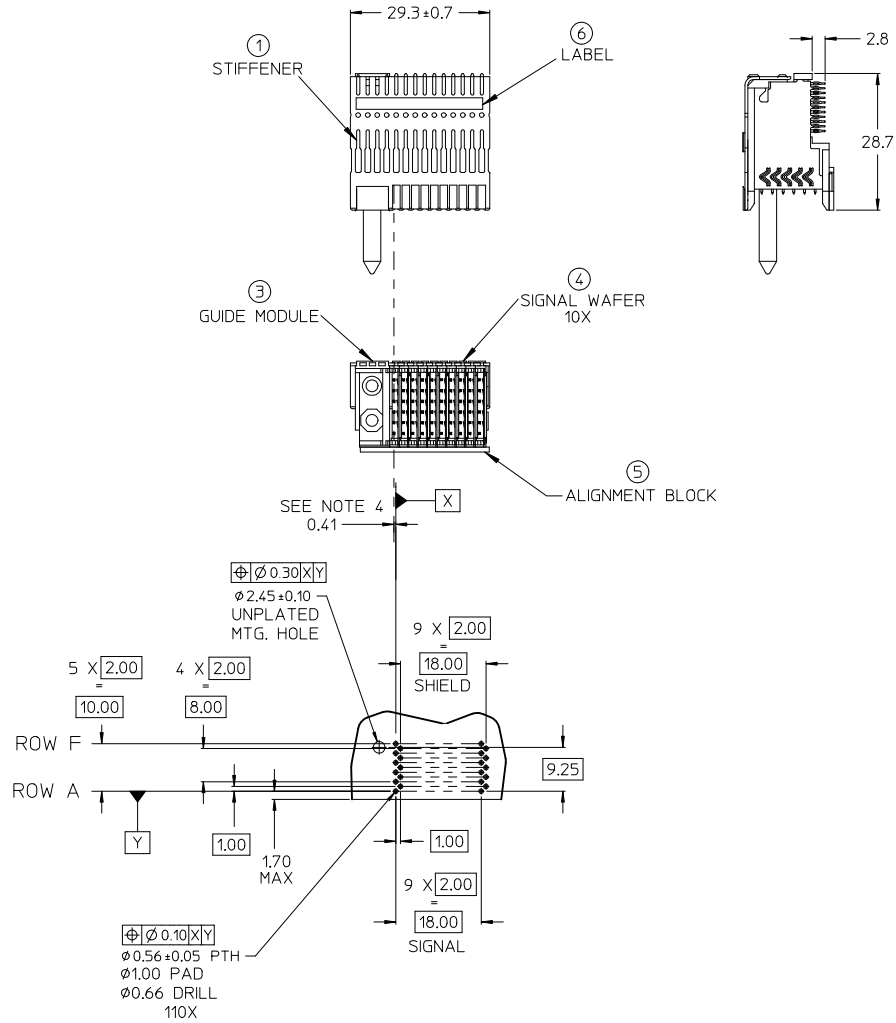


CUSTOMER: EGENERA



DAUGHTER CARD HOLE PATTERN  
(CONNECTOR SIDE)

NOTES:

1. MATERIALS: HOUSING: LIQUID CRYSTAL POLYMER (LCP), GLASS-FILLED, UL94V-0, BLACK.  
TERMINALS: COPPER ALLOY  
STIFFENER: STAINLESS STEEL
2. FINISH: SELECTIVE GOLD (Au) IN CONTACT AREA,  
0.76 micrometers MINIMUM THICKNESS,  
SELECTIVE MATTE TIN (Sn) IN TAIL AREA,  
NICKEL (Ni) UNDERPLATE OVERALL.
3. THIS PART CONFORMS TO MOLEX PRODUCT SPECIFICATION PS-74031-999.
4. DISTANCE FROM CENTER OF CONTACT TO CENTER OF PLATED THROUGH HOLE.
5. PARTS PACKED PER PK-70873-0892.  
SCREWS PACKED IN BAGS INSIDE OF TUBES.
6. LABEL MARKED WITH MOLEX PART NUMBER AND DATE CODE. LABEL CAN BE REPLACED WITH A LASER MARK ON THE STIFFENER.
7. THIS PART CONFORMS TO MOLEX COSMETIC SPECIFICATION PS-45499-002 CLASS B.

LEAD-FREE  
PLATING

ITEM	QTY	PART NUMBER	DESCRIPTION
1	1	74601-0029	STIFFENER
2	1	73726-0000	MOUNTING SCREW
3	1	74603-8000	GUIDE MODULE, UNPOLARIZED
4	10	74602-2030	6.25mm SIGNAL WAFER, LF
5	1	74719-0014	14 POS. ALIGNMENT BLOCK
6	1	73728-0000	CUSTOM LABEL

CHG TO LEAD-FREE EC NO: UCP2012-2210 DRAWN BY: GB CHECKED BY: J.B. INGHAM APPROVED BY: SMILLER	DATE 2012/01/25 2012/01/25 2012/02/28	QUALITY SYMBOLS ▽=0 ▽=0 ▽=0	GENERAL TOLERANCES (UNLESS SPECIFIED)		DIMENSION STYLE		SCALE 2:1	DESIGN UNITS METRIC	THIRD ANGLE PROJECTION
			mm	INCH	MM ONLY	DATE			
			4 PLACES	±0.15	±0.005	DATE	TITLE VHDM 6 ROW, LF RIGHT ANGLE MALE SALES DRAWING		
			3 PLACES	±0.25	±0.005	DATE	MOLEX INCORPORATED		
			2 PLACES	±0.25	±0.005	DATE	MATERIAL NO. 74600-1159 DOCUMENT NO. SD-74600-159 SHEET NO. 1 OF 1		
			1 PLACE	±0.38	±0.005	DATE	THIS DRAWING CONTAINS INFORMATION THAT IS PROPRIETARY TO MOLEX INCORPORATED AND SHOULD NOT BE USED WITHOUT WRITTEN PERMISSION		
			ANGULAR ±1/2°						
			DRAFT WHERE APPLICABLE MUST REMAIN WITHIN DIMENSIONS						