

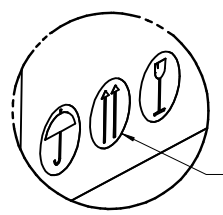
PRODUCT ID LABEL  
(1) PER REEL

SEE DETAIL 1

SHIPPER ID LABEL  
(1-2)/CARTON AS REQUIRED

PALLET 0313016630  
635 mm X 635 mm  
(26" X 26")  
(SEE NOTE 6)

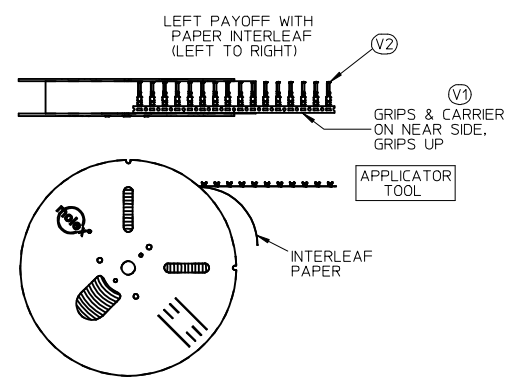
CUSTOMER COPY



NOTE 6

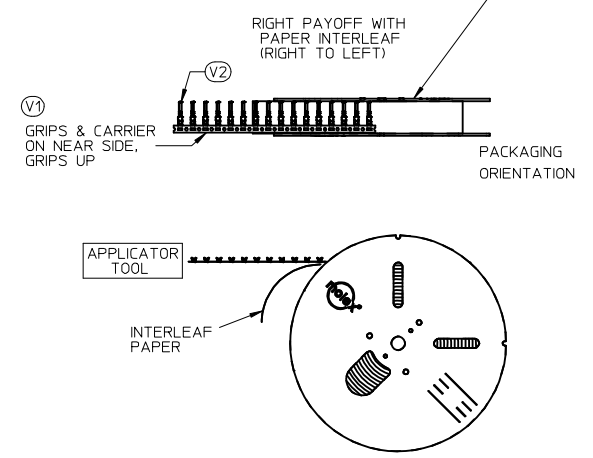
DETAIL 1  
SCALE 1:1.33

**PAYOFF DIRECTION D**



PLACE PRODUCT ID LABEL ON THIS SIDE TO INDICATE THE PREFERRED PACKAGING ORIENTATION

**PAYOFF DIRECTION B**



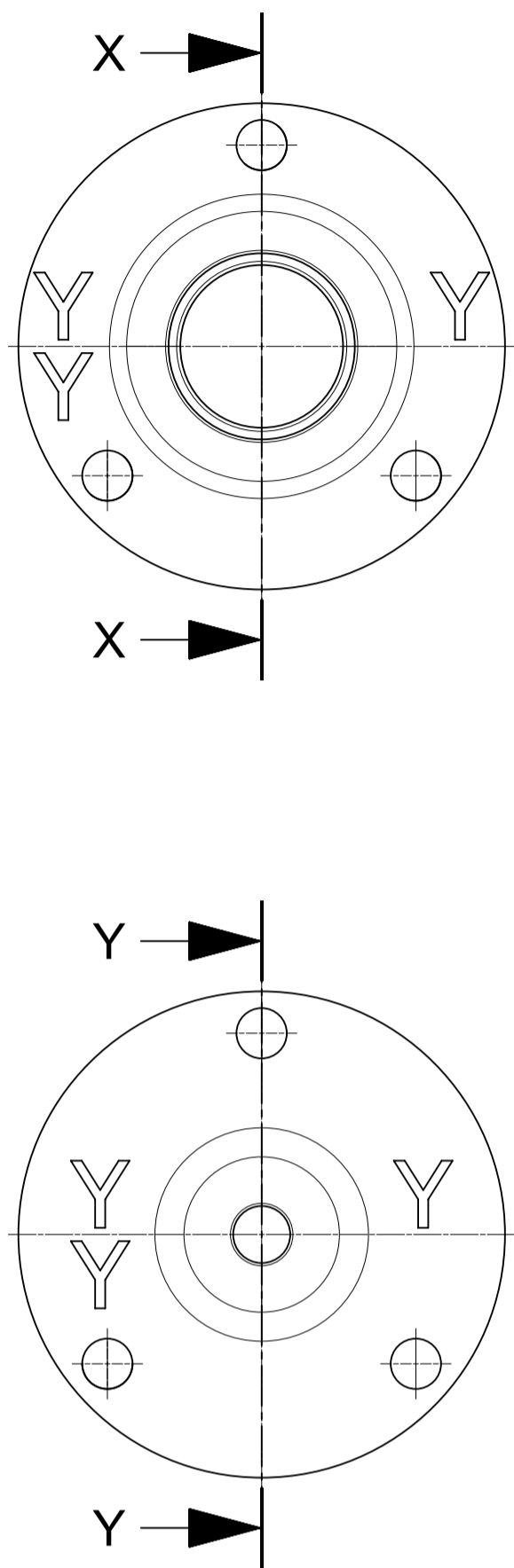
- NOTES:
1. NUMBER OF TERMINALS PER REEL: SEE TABLE (SHEET 2)
  2. STANDARD PACK QUANTITY (SPQ): SEE TABLE (SHEET 2)
  3. NUMBER OF REELS PER CARTON: SEE TABLE (SHEET 2)
  4. SPLICING: NO BREAKS, MAXIMUM 1 WELD PER REEL
  5. TO MINIMIZE STRESS ON TERMINALS, REELS SHOULD ALWAYS BE SHIPPED ON PALLETS WITH THE REELS LAYING FLAT AS SHOWN.
  6. PLACE CARTONS ON PALLET WITH ARROWS POINTING UP PER DETAIL 1
  7. FOR INTERNAL COPY SEE: PK-31301-053

SPO CORRECTION EC NO: UAU2015-0955 DRAWN: PPHELPS 2014/12/19 CHKD: JNORTHRO APPR: JNORTHRO 2015/01/26 REV: 4	QUALITY SYMBOLS ▽=0 ▽=0	GENERAL TOLERANCES (UNLESS SPECIFIED) <table border="1"> <thead> <tr> <th></th> <th>mm</th> <th>INCH</th> </tr> </thead> <tbody> <tr> <td>4 PLACES</td> <td>± ---</td> <td>± ---</td> </tr> <tr> <td>3 PLACES</td> <td>± ---</td> <td>± ---</td> </tr> <tr> <td>2 PLACES</td> <td>± ---</td> <td>± ---</td> </tr> <tr> <td>1 PLACE</td> <td>± ---</td> <td>± ---</td> </tr> </tbody> </table> ANGULAR ± 1 °		mm	INCH	4 PLACES	± ---	± ---	3 PLACES	± ---	± ---	2 PLACES	± ---	± ---	1 PLACE	± ---	± ---	DIMENSION STYLE <b>MM ONLY</b> DRAWN BY DATE PPHELPS 2012/10/24 CHECKED BY DATE	SCALE 1:10 DESIGN UNITS METRIC THIRD ANGLE PROJECTION	TITLE CTX PACKAGING SPEC GEN. MRKT. PRODUCT CUSTOMER COPY
		mm	INCH																	
	4 PLACES	± ---	± ---																	
	3 PLACES	± ---	± ---																	
2 PLACES	± ---	± ---																		
1 PLACE	± ---	± ---																		
DRAFT WHERE APPLICABLE MUST REMAIN WITHIN DIMENSIONS	APPROVED BY DATE JNORTHRO 2012/11/26	MATERIAL NO. <b>SEE TABLE</b>	MOLEX MOLEX INCORPORATED DOCUMENT NO. SD-31301-053	SHEET NO. 1 OF 2																
SIZE THIS DRAWING CONTAINS INFORMATION THAT IS PROPRIETARY TO MOLEX INCORPORATED AND SHOULD NOT BE USED WITHOUT WRITTEN PERMISSION																				

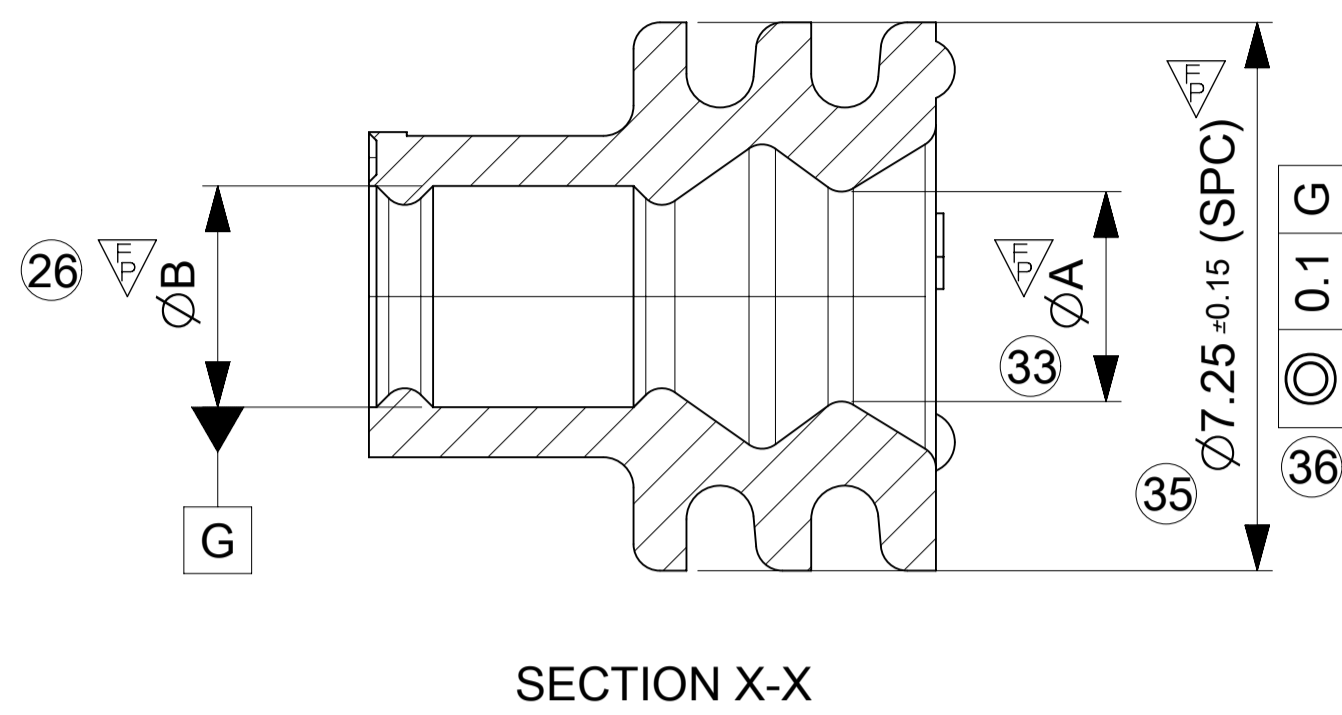
PACKAGING DATA											
PRODUCT DESCRIPTION	CTX 64				CTX 150			CTX 280 SEALED			
PRODUCT P/N SERIES	0348030*** 0348031*** 0348032***		0348033*** 0348035***		034805****			034808****			
GRIP CODE	S	L	S	L	S	M	L	VS	S	M	L
PART WT (Kg/1000)	.1552	.1642	.126	.126	.3070	.3270	.3470	.6596	.6886	.7106	.7332
STAND PACK QTY (SPQ)	60000	60000	60000	60000	35000	30000	25000	10000	10000	10000	10000
QTY/REEL	10000	10000	10000	10000	7000	6000	5000	2000	2000	2000	2000
REELS/SHIPPER CARTON	6	6	6	6	5	5	5	5	5	5	5
CARTONS/PALLET (MAX)	5	5	5	5	5	5	5	5	5	5	5
FILLED CARTON WT (Kg)	14.83	15.37	TBD	TBD	15.64	14.70	13.57	11.5	11.8	12.0	12.2
FLANGE DIAMETER (MM)	610	610	610	610	610	610	610	610	610	610	610

CUSTOMER COPY

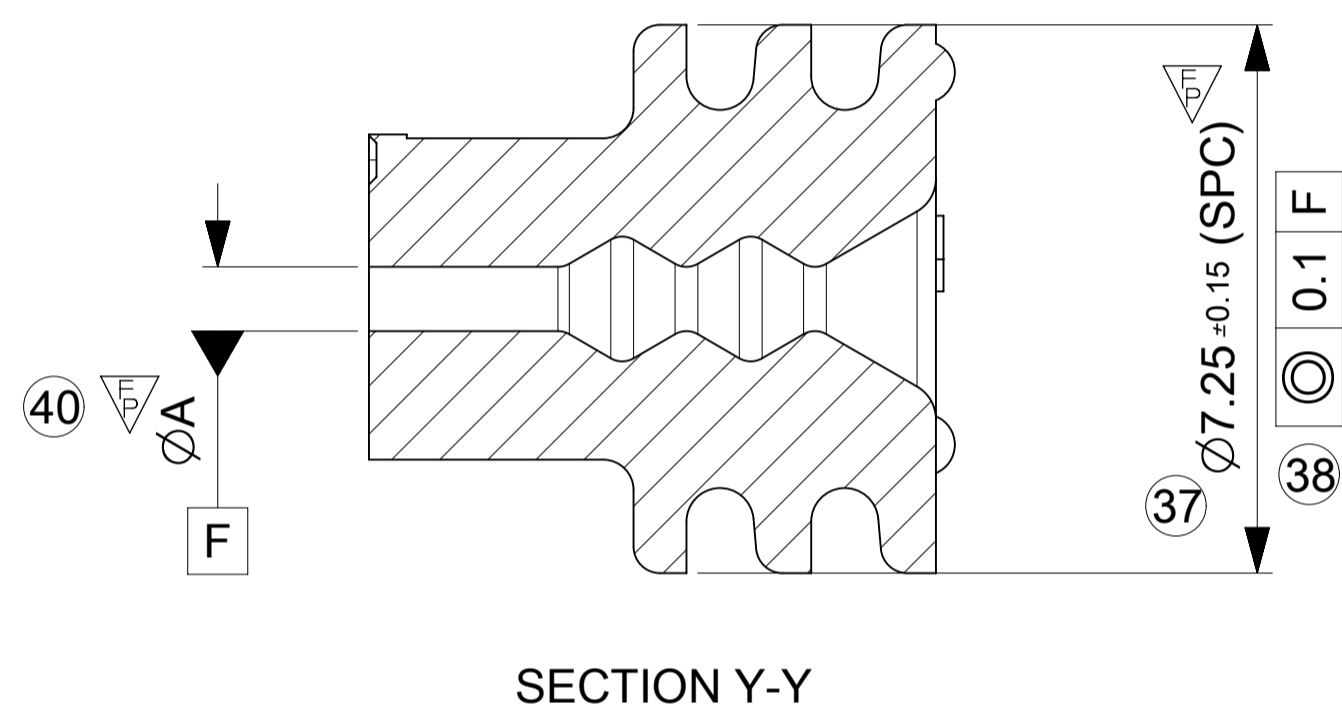
SPQ CORRECTION EC NO: UAU2015-0955 DRWN:PPHELPS 2014/12/19 CHKD: APPR: JNORTHRO 2015/01/26 REV: 4	DESCRIPTION JNORTHRO	QUALITY SYMBOLS	GENERAL TOLERANCES (UNLESS SPECIFIED) <table border="1"> <tr> <td></td> <td>mm</td> <td>INCH</td> </tr> <tr> <td>4 PLACES</td> <td>± ---</td> <td>± ---</td> </tr> <tr> <td>3 PLACES</td> <td>± ---</td> <td>± ---</td> </tr> <tr> <td>2 PLACES</td> <td>± ---</td> <td>± ---</td> </tr> <tr> <td>1 PLACE</td> <td>± ---</td> <td>± ---</td> </tr> </table>		mm	INCH	4 PLACES	± ---	± ---	3 PLACES	± ---	± ---	2 PLACES	± ---	± ---	1 PLACE	± ---	± ---	DIMENSION STYLE <b>MM ONLY</b>	SCALE 1:15	DESIGN UNITS METRIC	THIRD ANGLE PROJECTION
				mm	INCH																	
		4 PLACES		± ---	± ---																	
		3 PLACES		± ---	± ---																	
2 PLACES	± ---	± ---																				
1 PLACE	± ---	± ---																				
=0 =0	DRAWN BY PPHELPS DATE 2012/10/24 CHECKED BY DATE	TITLE CTX PACKAGING SPEC GEN. MRKT. PRODUCT CUSTOMER COPY																				
APPROVED BY JNORTHRO DATE 2012/11/26		MOLEX INCORPORATED DOCUMENT NO. SD-31301-053																				
DRAFT WHERE APPLICABLE MUST REMAIN WITHIN DIMENSIONS		MATERIAL NO. SEE TABLE SIZE C	SHEET NO. 2 OF 2																			



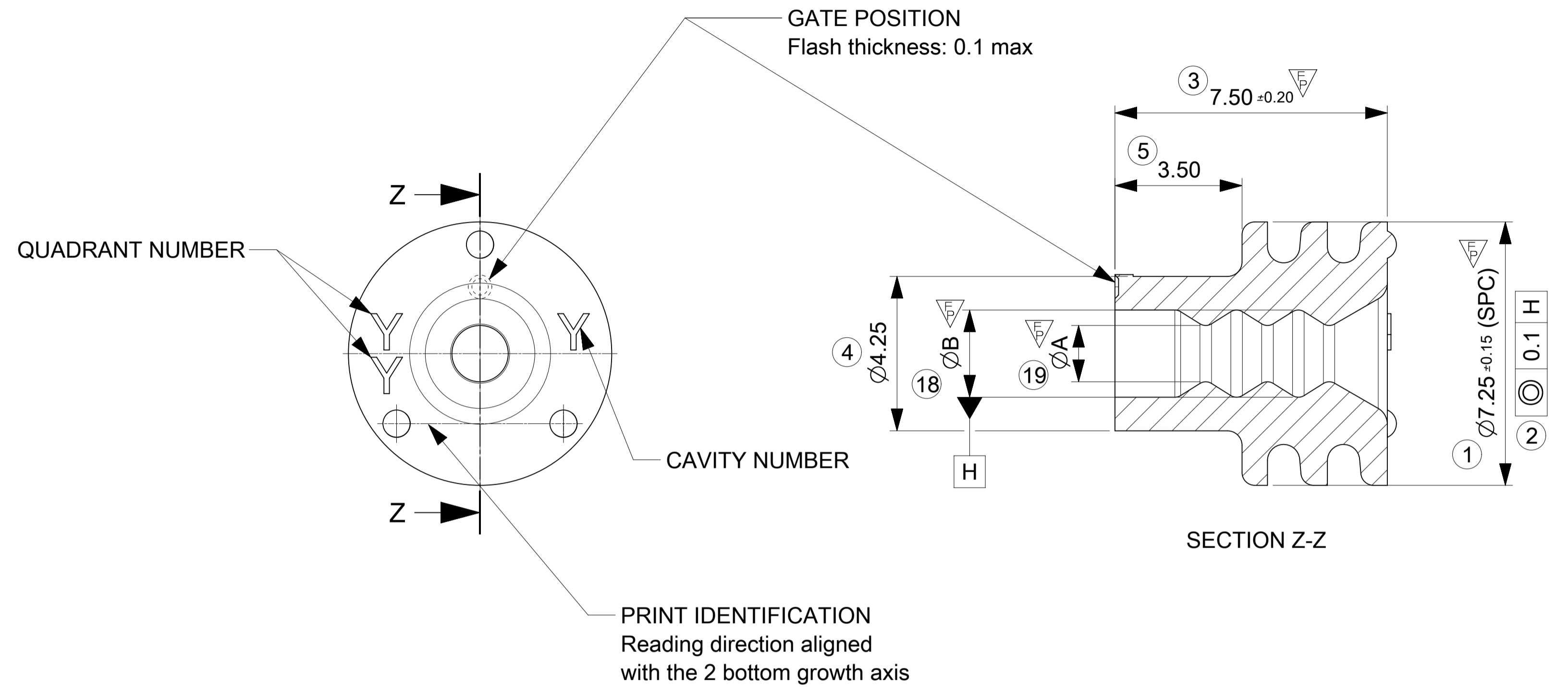
TYPE 2



TYPE 3

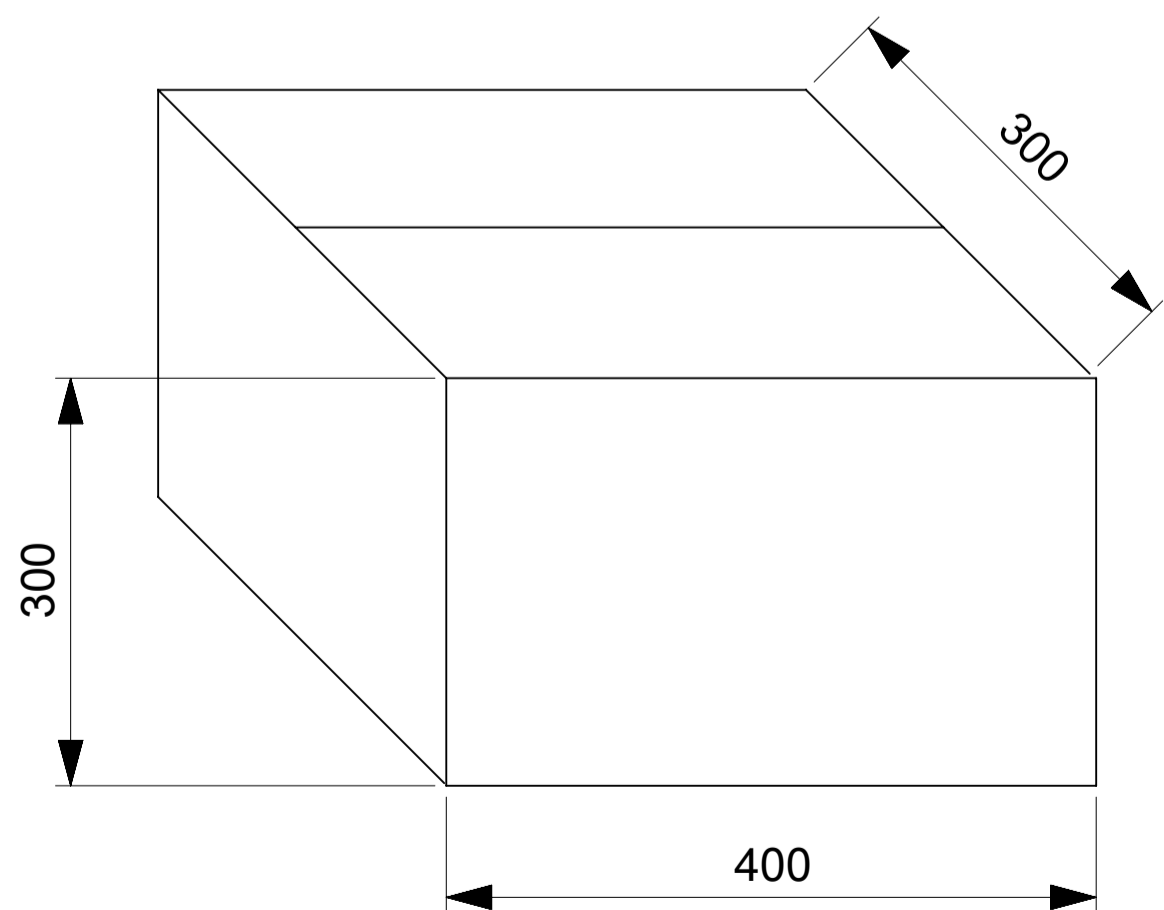


TYPE 1



BULK PACKAGING

50 000 seals (5 bags of 10 000 seals)/cardboard  
PACKAGING CODE: GALIA A12



(SPC): DENOTE SPC DIMENSION (3)

QUALITY SYMBOL COUNT	
PERFORMANCE	▽ = 10
ASSEMBLY	▽ = 0
CUSTOMER	▽ = 0

▽ MATERIAL SPECIFICATION : Silicon elastomer type LSR  
self bleeding (2% approx)

Flash max 0.1. No cut, no short shots,  
no tear, no distortion on seal lips allowed.

THIS DRAWING CONTAINS INFORMATION THAT IS PROPRIETARY TO MOLEX ELECTRONIC TECHNOLOGIES, LLC AND SHOULD NOT BE USED WITHOUT WRITTEN PERMISSION											
DIMENSION UNITS		SCALE		CURRENT REV DESC: REMASTERED IN ECTR							
mm		10:1		<p>EC NO: 633640</p> <p>DRWN: MKP 2020/02/25</p> <p>CHK'D: OPLESSIS 2020/03/17</p> <p>APPR: CBOUCHAN 2020/03/18</p> <p>INITIAL REVISION:</p> <p>DRWN: JDUCLIOS 2010/04/07</p> <p>APPR: BMOSEY 2010/05/04</p>							
GENERAL TOLERANCES (UNLESS SPECIFIED)											
4 PLACES ±		±									
3 PLACES ±		±									
2 PLACES ±		± 0.1									
1 PLACE ±		± 0.1									
0 PLACES ±		± 0.1									
ANGULAR TOL ±		± 0.5 °		<p>DOCUMENT NUMBER: SD-64325-006</p> <p>DOC TYPE: PSD</p> <p>DOC PART: 001</p> <p>REVISION: D1</p>							
DRAFT WHERE APPLICABLE MUST REMAIN WITHIN DIMENSIONS		FIRST ANGLE PROJECTION		DRAWING		SERIES		MATERIAL NUMBER		CUSTOMER	
		A1-SIZE		64325		SEE CHART		GENERAL MARKET		SHEET NUMBER	
										1 OF 1	

**molex**

SGL WIRE SEALS 2.8  
W/O RIB

PRODUCT CUSTOMER DRAWING

DOCUMENT NUMBER: SD-64325-006

MATERIAL NUMBER: SEE CHART

CUSTOMER: GENERAL MARKET

SHEET NUMBER: 1 OF 1

0643251366	BLUE	2	3.40/4.20	0.137	2.55/2.70	2.80/2.95
0643251358	GREY	2	2.65/3.50	0.158	2.00/2.15	2.20/2.35
0643251345	GREEN	1	2.00/2.80	0.168	1.40/1.70	2.25/2.55
0643251332	RED	3	1.30/2.15	0.190	0.70/1.00	-
MOLEX PART NUMBER	COLOR	TYPE	ALLOWED WIRE DIAMETER	WEIGHT (g)	ØA	ØB
DOCUMENT STATUS	P1	RELEASE DATE	2020/03/18	08:59:10		