



LTE CELLULAR
EXTENDER
FOR BUSINESS
CONTINUITY



DIGI 6310-DX

Avoid network outages with primary or backup LTE connectivity; integrate seamlessly with existing infrastructure

The Digi® 6310-DX LTE cellular extender serves as an ideal failover solution by retrofitting your infrastructure for cellular network access. Powered by the Digi® CORE 1002-CM 4G LTE plug-in modem, dual SIM slots can further protect against downtime by automatically switching to a secondary cellular carrier should the primary SIM lose Internet access. A suite of Digi CORE 1002-CM plug-in modems let Digi enterprise routers leverage the category of LTE best suited for their use case — standard LTE, LTE with EV-DO fallback, or LTE-Advanced.

Couple the Digi 6310-DX with a dedicated wireline ISP connection to provide dual-WAN connectivity, maximize uptime and ensure business connectivity for connected

devices that demand reliable network availability, such as POS systems, mobile kiosks and digital signage. Deployments are streamlined with installation accessories that include a disposable battery pack for site survey, (passive) PoE injector for optimizing placement for best cellular reception and a mounting bracket.

The Digi centralized management platform provides easy setup, configuration and support for installations of Digi and third-party devices. Digi Remote Manager® and aView™ offer web-based device management solutions to securely monitor and control Digi enterprise routers and gateways -- and the health of your network -- after deployment.

FEATURES AND BENEFITS

- 4G LTE certified Digi CORE 1002-CM plug-in modem
- LTE-Advanced, standard LTE, or LTE with EV-DO fallback
- Upgrade to meet changing cellular standards
- Ethernet WAN port for wireline network access
- Optimized connectivity to any Ethernet device
- Optional remote mounting kit for site survey and PoE installation
- Zero-touch provisioning and cloud management
- Onboard signal strength and network status indicators

RELATED PRODUCTS AND COMPONENTS



Digi 6330-MX



Digi CORE 1002-CM



Remote Mounting Kit (Optional)

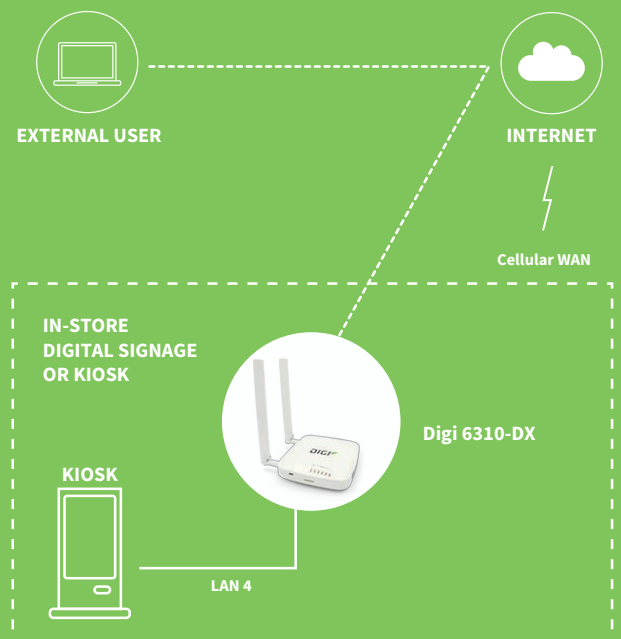


Digi PoE Injector



Battery Backup

APPLICATION EXAMPLE



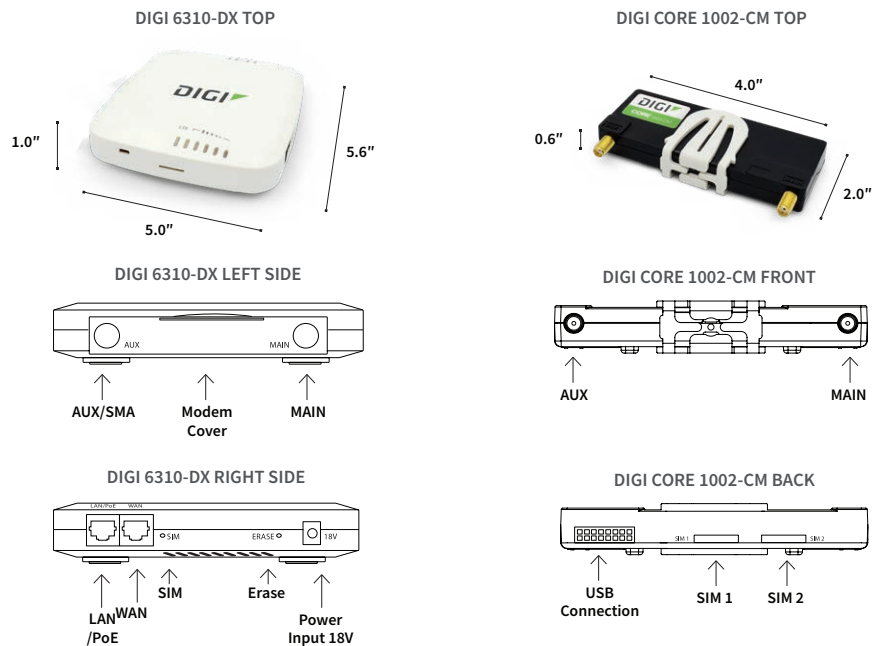
SPECIFICATIONS

DIGI 6310-DX AND DIGI CORE 1002-CM

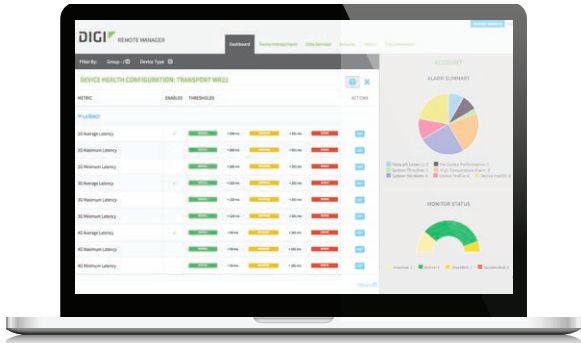
SOFTWARE	
REMOTE MANAGEMENT	Digi aView™ (cloud based); SNMP v1/v2/v3 (support for Digi Remote Manager® 1Q2019)
PROTOCOLS	RIP, RIPng, OSPFv2, OSPFv3, BGP, Babel, IS-IS
SECURITY	AES, 3DES, IKEv1, OpenVPN, MODECFG, X509, SHA1, DES, MD5, RADIUS, TACACS+
PHYSICAL	
DIMENSIONS (L x W x H)	Digi 6310-DX: 5.6 in x 5.0 in x 1.0 in (142 mm x 128 mm x 25 mm); CORE 1002-CM: 4.0 in x 2.0 in x 0.6 in (102 mm x 51mm x 15 mm)
WEIGHT	Digi 6310-DX: 7.0 oz. (0.29 kg); CORE 1002-CM: 5.5 oz. (0.156 kg)
STATUS LEDs	LTE status, (5) signal strength, (2) Ethernet link, (2) active SIM slot
POWER REQUIREMENTS	
POWER SUPPLY	18V DC, 0.66A; 100-240 AC
OTHER	Remote mounting kit: temporary battery, passive PoE injector, and mounting bracket/accessories
ENVIRONMENTAL	
OPERATING TEMPERATURE	0° C to 40° C (32° F to 104° F)
STORAGE TEMP AND HUMIDITY	-13° F to 167° F (-25° C to 75° C); 5% to 95% non-condensing
APPROVALS	
EMISSIONS / IMMUNITY	FCC Part 15, Subpart B, Class A; CE, RCM; CAN ICES-3(B)/NMB-3(B)
CELLULAR SPECIFICATIONS	
CELL ANTENNA	(2) Dipole; Frequency: 700-960/1575-2700 hz; Gain: 1-4 dBi
SIM	(2) SIM card slot (size 2FF), software selectable and hardware switchable
CELLULAR CERTIFICATIONS	AT&T, Sprint, T-Mobile, Verizon and PTCRB
LTE PLUG-IN MODEMS	Digi CORE 1002-CM03 CAT 3 LTE, EVDO, HSPA+, EDGE, GPRS and GSM Digi CORE 1002-CM04* CAT 4 LTE, HSPA+ Digi CORE 1002-CM06 CAT 6 LTE-A, LTE, HSPA+ Digi CORE 1002-CM16 LTE-A, LTE, HSPA+
INTERFACES	
ETHERNET PORTS	(2) 10/100 Base-T Dynamic Ethernet ports
WARRANTY	
PRODUCT WARRANTY	3 years

*The Digi CORE 1002-CM04 is not supported on the Sprint Network

PRODUCT IMAGES



DIGI REMOTE MANAGER® (AVIEW™ CLOUD MANAGEMENT AVAILABLE FOR ENTERPRISE ROUTERS)



CAPABILITIES

- Centralized management of remote devices over 3G/4G/LTE
- Define standard configurations and automatically monitor individual devices for PCI security compliance
- Report and alert on performance statistics, including connection history, signal quality, latency, data usage and packet loss
- No servers or applications to operate and maintain
- Complete tasks for your entire device network in minutes
- Edit configurations and update firmware for your individual devices or groups
- Monitor the status and location of your remote device via a web browser
- Active or deactivate cellular lines and monitor data to ensure you never incur overage charges

INFRASTRUCTURE

- Hosted in a commercial-grade SAS 70-certified environment
- Superior availability, operating to 99.9% or greater
- Open APIs available to support application development

SECURITY

- Certified SSAE-16 facilities
- Over 175 Security Controls in place to protect your data
- Enables compliance with security frameworks like PCI, HIPAA, NIST and more
- Earned SkyHigh's Cloud Trust Program highest ranking of Enterprise-Ready

PART NUMBERS	DIGI 6310-DX AND DIGI CORE 1002-CM
ASB-6310-DXE4-GLB	Digi 6310-DXE4 cellular extender; 2 Port 10/100; CAT 4; LTE / HSPA+; US, UK, EU and AU AC Plug Tips; Certified for EU Regions
ASB-631R-DX03-OUS	Digi 6310-DX03 LTE cellular extender; 2 Port 10/100; Remote mounting kit; CAT 3; LTE / HSPA+ / EV-DO; Cellular certifications: Verizon, AT&T, Sprint, T-Mobile, PTCRB
ASB-631R-DX04-OUS	Digi 6310-DX04 LTE cellular extender; 2 Port 10/100; Remote mounting kit; CAT 4; LTE / HSPA+; Cellular certifications: Verizon, AT&T, T-Mobile, PTCRB
ASB-631R-DX06-OUS	Digi 6310-DX06 LTE cellular extender; 2 Port 10/100; Remote mounting kit; CAT 6; LTE-A / HSPA+; Cellular certifications: Verizon, AT&T, Sprint; T-Mobile, PTCRB
ASB-631R-DX06-GLB	Digi 6310-DX06 LTE cellular extender; 2 Port 10/100; Remote mounting kit; US, UK, EU and AU AC Plug Tips; CAT 6; LTE-A / HSPA+; Certified countries / regions: European Union, European Economic Area and Switzerland
ASB-1002-CM03-GLB	Digi CORE 1002-CM plug-In LTE modem; CAT 3; LTE / HSPA+ / EV-DO, Cellular certifications: Verizon, AT&T, Sprint, T-Mobile, PTCRB
ASB-1002-CM04-OUS	Digi CORE 1002-CM plug-In LTE modem; CAT 4; LTE / HSPA+, Cellular certifications: Verizon, AT&T, T-Mobile, PTCRB
ASB-1002-CM06-GLB	Digi CORE 1002-CM plug-In LTE modem; CAT 6; LTE-A / HSPA+, Cellular certifications: Verizon, AT&T, Sprint, T-Mobile, PTCRB
ASB-1002-CM16-GLB	Digi CORE 1002-CM plug-In LTE modem; CAT 6; LTE-A / HSPA+; Cellular certifications: Australia / New Zealand

PART NUMBERS	ACCESSORIES
440088	Cable assembly passive POE power injector for Digi 6310-DX, white 2.1 mm barrel connector (replacement)
450061	18V PSU power supply for 6310-DX, 633x-MX and EX15 with Barrel Jack connector (replacement)
560083	Temporary battery pack for Digi 633x-MX and 6310-DX, 9V with 6" power lead, 2.1 barrel jack connector (replacement)
170011	(1) Antenna extender: 48 mm circle antenna magnetic base (base connector: SMA jack; Cable: Low loss CLF; Length: 50 cm with SMA plug (optional)
170012	(1) Cellular antenna (black) for Digi 5400-RM, 6300-CX, 6310-DX, 633x-MX, 635x-SR and AT&T VPN devices (replacement part)

DIGI SERVICE AND SUPPORT / You can purchase with confidence knowing that Digi is always available to serve you with expert technical support and our industry leading warranty. For detailed information visit www.digi.com/support.

© 1996-2018 Digi International Inc. All rights reserved.
All trademarks are the property of their respective owners.

DIGI INTERNATIONAL WORLDWIDE HQ
877-912-3444 / 952-912-3444 / www.digi.com

DIGI INTERNATIONAL JAPAN
+81-3-5428-0261 / www.digi-intl.co.jp

DIGI INTERNATIONAL GERMANY
+49-89-540-428-0

DIGI INTERNATIONAL SINGAPORE
+65-6213-5380

DIGI INTERNATIONAL CHINA
+86-21-50492199 / www.digi.com.cn