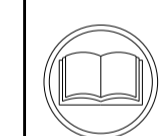


| ATLANTIC VERSION TERMINATOR INTERFACE ADAPTER | PART NUMBER | REVISION                 | DESCRIPTION              | FEED TYPE         | CONVERT TO        | PART NUMBERS REQUIRED |           |             |           |           |                        |
|---|-------------|--------------------------|--------------------------|-------------------|-------------------|-----------------------|-----------|-------------|-----------|-----------|------------------------|
|   | 2151733-1   | B                        | FINE CRIMP HEIGHT ADJUST | MECHANICAL        | PNEUMATIC FEED    | 2119950-1             | 1338685-1 | 5-18022-5   | 2119641-1 | 2119799-1 | 2063440-1              |
|   | 2151733-2   | B                        | FINE CRIMP HEIGHT ADJUST | PNEUMATIC         | SERVO LATCH PLATE | 2119951-1             | -         | 8-2151733-5 | 1901094-3 | -         | 2168400-6 (QUANTITY 2) |
|   |             |                          |                          |                   | SMART APPLICATOR  | 2161326-1             | -         | 8-2151733-4 | -         | -         |                        |
|   |             |                          |                          |                   | MECHANICAL FEED   | 2119949-1             | 1338685-1 | 5-18022-5   | 2119653-1 | -         | -                      |
|   | 2151733-5   | B                        | FINE CRIMP HEIGHT ADJUST | SERVO LATCH PLATE | SERVO LATCH PLATE | 2119951-1             | -         | 8-2151733-5 | 1901094-3 | -         | 2168400-6 (QUANTITY 2) |
|   |             |                          |                          |                   | SMART APPLICATOR  | 2161326-1             | -         | 8-2151733-4 | -         | -         |                        |
|   | 2151733-6   | B                        | NON-CRIMP HEIGHT ADJUST  | SERVO LATCH PLATE | MECHANICAL FEED   | 2119949-1             | 1338685-1 | 5-18022-5   | 2119653-1 | -         | -                      |
| 2151733-7                                     | B           | FINE CRIMP HEIGHT ADJUST | NONE                     | PNEUMATIC FEED    | 2119950-1         | 1338685-1             | 5-18022-5 | 2119641-1   | 2119799-1 | 2063440-1 |                        |
| 7-2151733-7                                   | B           | CRIMP TOOLING KIT        | -                        | -                 | -                 | -                     | -         | -           | -         | -         |                        |

| APPLICATOR DATA                   |                |      |
|-----------------------------------|----------------|------|
| CRIMP WIRE                        | SIZE           | TYPE |
| INSUL                             | 0.89 mm [.035] | F    |
|                                   | 1.78 mm [.070] | F    |
| APPLICATOR INSTRUCTIONS 408-10389 |                |      |

| TERMINAL DATA: J.S.T. TERMINAL |                 | TE CRIMP SPECIFICATION       |                 |
|--------------------------------|-----------------|------------------------------|-----------------|
| TERMINAL NAME: BOARD-IN CRIMP  |                 |                              |                 |
| WIRE STRIP LENGTH              |                 | INSULATION DIAMETER RANGE    |                 |
| 2.03-2.29 mm [.080-.090 IN]    | J.S.T.          | Ø0.80-1.30 mm [.031-.051 IN] | -               |
| TERMINALS APPLIED              |                 |                              |                 |
| TE TERMINAL                    | J.S.T. TERMINAL | TE TERMINAL                  | J.S.T. TERMINAL |
| 1572898-1                      | SIN-002T-1.0    |                              |                 |

| WIRE SIZE | CRIMP HEIGHT mm [INCH]     | CRIMP HEIGHT REFERENCE SETTING |
|-----------|----------------------------|--------------------------------|
| 26 AWG    | 0.70+/-0.05 [.028+/- .002] | 8.6                            |
| 28 AWG    | 0.70+/-0.05 [.028+/- .002] | 8.4                            |



- 1 RECOMMENDED SPARE PARTS
- 2 GREASE BEARING SURFACES LIGHTLY
- 3. LUBRICATE DAILY PER THE APPLICATOR INSTRUCTION SHEET SUPPLIED WITH THE APPLICATOR.
- 4 APPLICATOR SPECIFIC DATA TO BE ENTERED INTO BLANK MEMORY CHIP AT ASSEMBLY. SEE BELOW FOR PART NUMBER:  
 MECHANICAL FEED WITH "SMART APPLICATOR" CONVERSION: 8-2151733-4  
 PNEUMATIC FEED WITH "SMART APPLICATOR" CONVERSION: 8-2151733-4  
 SERVO FEED WITH "FINE CRIMP HEIGHT ADJUST": 8-2151733-5  
 SERVO FEED WITH "NON-CRIMP HEIGHT ADJUST": 8-2151733-6
- 5. ADJUSTMENT OF THE STRIPPER MAY BE REQUIRED WHEN MOVING THE APPLICATOR BETWEEN BENCH AND LEADMAKER APPLICATIONS.
- 6 APPLY PART NUMBER 1-23419-5 LOCTITE TO THREADS OF ITEMS 62 & 242. FOR -6 ONLY APPLY PART NUMBER 1-23419-5 LOCTITE TO THREADS OF ITEMS 37 & 242.
- 7 GREASE THREADS, GROOVE AND O-RING ON ITEMS 35 & 252.
- 8 MAGNET, ITEM 166 MUST BE ORIENTED CORRECTLY IN ORDER TO PROPERLY ACTUATE THE COUNTER.
- 9 CRIMP HEIGHT REFERENCE SETTING WAS THE SETTING USED WHEN THE APPLICATOR WAS QUALIFIED AT THE FACTORY. ADJUSTMENT MAY BE NECESSARY WHEN RUNNING APPLICATOR IN THE FIELD.
- 10 SPARE FEED CAM STORAGE LOCATION REFER TO INSTRUCTION SHEET FOR ADDITIONAL INFORMATION.
- 11 TO CONVERT THE APPLICATOR TO A NON-CARRIER CUTTING STYLE, REMOVE ITEM 13 AND ATTACH TO THE LOCATION ON THE BACK SIDE OF THE HOUSING. REFER TO INSTRUCTION SHEET FOR ADDITIONAL INFORMATION.
- 12 WHEN ASSEMBLING -6 NON-CRIMP HEIGHT ADJUST APPLICATOR USE SHIM PACK 2119957-2 TO ALIGN APPLICATOR'S MAXIMUM WIRE CRIMP HEIGHT AT NORMAL TERMINATOR SHUT HEIGHT

ATLANTIC VERSION  
 Shown on sheets 1 of 4 & 2 of 4  
 (Pacific version shown on sheets 3 of 4 & 4 of 4)

| SET UP GAUGE | LOC | DIST | REVISIONS |           |    |      |
|--------------|-----|------|-----------|-----------|----|------|
| 2119599-1    | A   | 66   | REV       | DATE      | BY | APPV |
|              |     |      | 1         | 13AUG2010 | GH | TE   |
|              |     |      | A         | 10SEP2012 | GH | TE   |
|              |     |      | B         | 10JAN2013 | XZ | TE   |

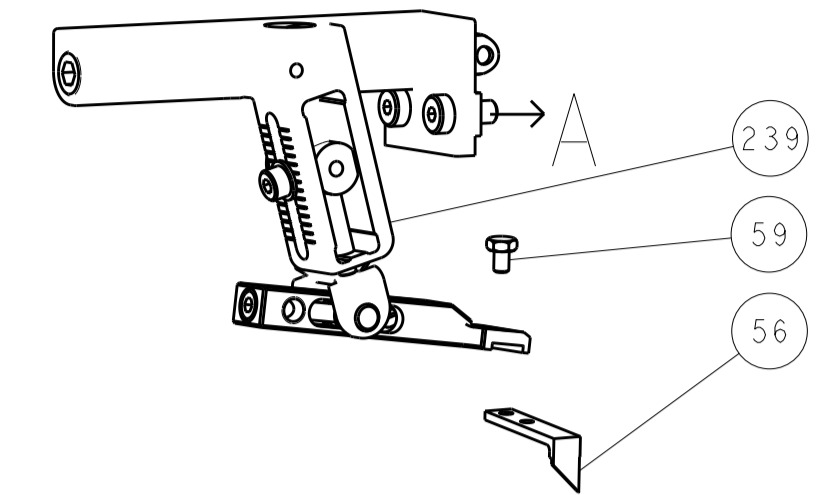
| REV | DATE | BY  | APPV | DESCRIPTION | ITEM NO                             |     |
|-----|------|-----|------|-------------|-------------------------------------|-----|
| -   | -    | 1   | -    | 2119957-2   | APPLICATOR SHIM PACK                | 260 |
| -   | 1    | -   | 1    | 8-21084-0   | O-RING, .676 ID, .070 DIA. MAT.     | 252 |
| -   | -    | -   | 1    | 2119640-1   | PUSH ROD, AIR FEED                  | 250 |
| -   | -    | -   | 1    | 2079988-1   | BUSHING, LCH5-12, MISUMI            | 249 |
| -   | -    | -   | 1    | 2119641-1   | FEED CAM, AIR FEED                  | 248 |
| -   | 1    | -   | 1    | 2119798-1   | DETENT PIN                          | 247 |
| -   | 1    | -   | 1    | 1-22279-3   | SPRING, COMPRESSION                 | 246 |
| -   | -    | 1   | -    | 2119758-1   | RAM, AMP STYLE, SIDE FEED, NON-ADJ. | 245 |
| -   | 1    | 1   | 1    | 2119082-8   | CAM, SNAIL, INSULATION ADJUSTMENT   | 244 |
| -   | 1    | 1   | 1    | 2079764-1   | WASHER, WAVE SPRING, CREST-TO-CREST | 243 |
| 6   | 1    | 1   | 1    | 2119083-1   | RETAINER, INSULATION DIAL           | 242 |
| -   | 1    | 1   | 1    | 7-18023-7   | SCR, SKT HD CAP M3 X 4.0            | 241 |
| -   | -    | 2   | 2    | 2168400-6   | SHCS, LOW HEAD, RoHS, M5 X 16       | 240 |
| -   | -    | -   | 1    | 2119580-1   | MECHANICAL FEED ASSEMBLY            | 239 |
| -   | -    | -   | 1    | 2063440-1   | AIR FEED MODULE                     | 238 |
| -   | -    | 1   | 1    | 2119740-2   | TAG, IDENTIFICATION                 | 213 |
| -   | -    | 1   | 1    | 1901094-3   | SPACER, FEEDER                      | 198 |
| -   | -    | -   | 2    | 21045-3     | RING, RETAIN, EXTERN, 3/16 CRESCENT | 172 |
| -   | 1    | 1   | 1    | 994969-1    | MAGNET, RARE EARTH HIGH ENERGY      | 166 |
| -   | REF  | REF | REF  | 994970-2    | COUNTER, MAGNETIC                   | 164 |
| -   | -    | -   | 1    | 240638-1    | SPRING, FEED FINGER                 | 163 |
| -   | -    | -   | 1    | 3-23627-7   | PIN, RETAIN, GRVD, 3/16 X .854      | 137 |
| -   | -    | -   | 1    | 2119799-1   | HOLDER, FEED FINGER, AF             | 136 |
| -   | -    | REF | REF  | SEE NOTE 4  | MEMORY CHIP, PROGRAMMED             | 135 |
| -   | -    | 1   | 1    | 1633743-1   | SERVO FEED LATCH ASM                | 133 |
| -   | 1    | 1   | 1    | 1-18028-2   | WASHER, FLAT, REG M4                | 119 |
| -   | -    | REF | REF  | 2119944-1   | FEED FINGER ASSEMBLY, SF            | 117 |
| -   | 1    | 1   | 1    | 455888-5    | SPACER, CRIMPER                     | 82  |
| -   | 1    | 1   | 1    | 2119956-1   | DOCUMENTATION PACKAGE               | 71  |
| -   | 1    | -   | 1    | 2119740-1   | TAG, IDENTIFICATION                 | 67  |
| -   | 2    | 2   | 2    | 2168078-1   | SCREW, DRIVE, RH, RoHS              | 66  |
| -   | 1    | -   | 1    | 2119793-1   | LIMITER, ADJUSTMENT BOLT            | 63  |
| 6   | 3    | -   | 3    | 992763-5    | SCR, SET, SOC, CONE POINT, M3 x 4.0 | 62  |
| -   | 1    | 1   | 1    | 2079383-4   | SCR, BHSC, RoHS (M4 X 8)            | 60  |
| -   | -    | -   | 1    | 5-18022-5   | SCR, HEX HD CAP, M4 X 6.0           | 59  |
| -   | -    | -   | 1    | 1338685-1   | PAWL, FEED                          | 56  |
| -   | 4    | 4   | 4    | 2168400-1   | SHCS, LOW HEAD, RoHS, M4 X 12       | 54  |
| -   | -    | -   | 1    | 18023-9     | SCR, SKT HD CAP M4 X 6.0            | 49  |
| -   | -    | -   | 1    | 2119652-1   | FEED CAM, PRE FEED                  | 48  |
| -   | -    | -   | 1    | 2119653-1   | FEED CAM, POST FEED                 | 47  |
| -   | 1    | 1   | 1    | 2119656-9   | APPLICATOR BASIC ASSEMBLY, SF       | 46  |
| -   | 1    | -   | 1    | 2119370-1   | RAM, AMP STYLE, SIDE FEED           | 44  |
| -   | 1    | 1   | 1    | 2079383-7   | SCR, BHSC, RoHS (M8 X 25)           | 41  |
| -   | 1    | -   | 1    | 2119645-1   | DISC, NUMBERED FA WIRE ADJUSTMENT   | 40  |
| -   | 1    | -   | 1    | 2119957-1   | APPLICATOR SHIM PACK                | 39  |
| -   | 1    | 1   | 1    | 2119644-1   | RAM WASHER, PRECISION               | 38  |
| -   | 1    | 1   | 1    | 2119085-1   | FA HEAD, ATLANTIC STYLE             | 37  |
| -   | 1    | -   | 1    | 2119092-1   | BOLT, ADJUSTMENT                    | 35  |
| -   | 1    | 1   | 1    | 3-1752356-1 | SUPPORT, TERMINAL                   | 34  |
| -   | 2    | 2   | 2    | 2079383-5   | SCR, BHSC, RoHS (M4 X 20)           | 33  |
| -   | 1    | 1   | 1    | 2161328-1   | HEX HEAD, FLANGED, M5 x 8mm LONG    | 32  |
| -   | 1    | 1   | 1    | 1320908-6   | SPACER, STRIP GUIDE                 | 30  |
| -   | 1    | 1   | 1    | 2119959-1   | ASSEMBLY, STRIP GUIDE               | 29  |
| -   | 1    | 1   | 1    | 1-455888-0  | SPACER, CRIMPER                     | 28  |
| -   | 1    | 1   | 1    | 1320928-2   | STRIP GUIDE                         | 24  |
| -   | 1    | 1   | 1    | 2168083-2   | SCR, SKT HD CAP, RoHS, M4 X 8.0     | 21  |
| -   | 1    | 1   | 1    | 1-18028-2   | WASHER, FLAT, REG M4                | 20  |
| -   | 1    | 1   | 1    | 2119533-1   | STRIPPER, SIDE FEED                 | 19  |
| 1   | 1    | 1   | 1    | 2119806-1   | INSERT, SHEAR                       | 13  |
| -   | 1    | 1   | 1    | 3-22280-3   | SPRING, COMPRESSION                 | 12  |
| -   | 1    | 1   | 1    | 1-356885-4  | STOP, SHEAR                         | 11  |
| 1   | 1    | 1   | 1    | 2119805-1   | SHEAR HOLDER, FRONT                 | 10  |
| 1   | 1    | 1   | 1    | 462006-6    | FLOATING SHEAR, FRONT               | 9   |
| 1   | 1    | 1   | 1    | 8-1333225-4 | ANVIL, COMBINATION                  | 8   |
| -   | -    | -   | -    | -           | -                                   | 7   |
| -   | -    | -   | -    | -           | -                                   | 6   |
| -   | 1    | 1   | 1    | 2119757-5   | DEPRESSOR, SHEAR                    | 5   |
| -   | 1    | 1   | 1    | 238011-6    | BLOCK, CRIMPER SPACER               | 4   |
| 1   | 1    | 1   | 1    | 4-1633961-8 | CRIMPER, INSULATION F PREMIUM       | 3   |
| -   | 1    | 1   | 1    | 455888-8    | SPACER, CRIMPER                     | 2   |
| 1   | 1    | 1   | 1    | 1803091-2   | CRIMPER, WIRE PREMIUM               | 1   |

| DIMENSIONS: |             | TOLERANCES UNLESS OTHERWISE SPECIFIED: |                | OWN                                    | CHK   | APPV               | DATE      | TE Connectivity            |  |
|-------------|-------------|--|----------------|--|-------|--------------------|-----------|----------------------------|--|
| mm          | 0 PLC ±.5   | 1 PLC ±.5                              | 2 PLC ±.13     | HOFFNER                                | ELBIN | ELBIN              | 13AUG2012 | Harrisburg, PA 17105-3608  |  |
|             | 3 PLC ±.013 | 4 PLC ±.013                            | ANGLES ±.0°30' |  |       |                    | 14AUG2012 | Ocean Side Feed Applicator |  |
| MATERIAL    | FINISH      | WEIGHT                                 | SCALE          | Customer Accessible Production Drawing |       | A1 00779 ©=2151733 |           | RESTRICTED TO              |  |
|             |             |  | 1:1            | SHEET 1 OF 4                           |       | REV B              |           |                            |  |

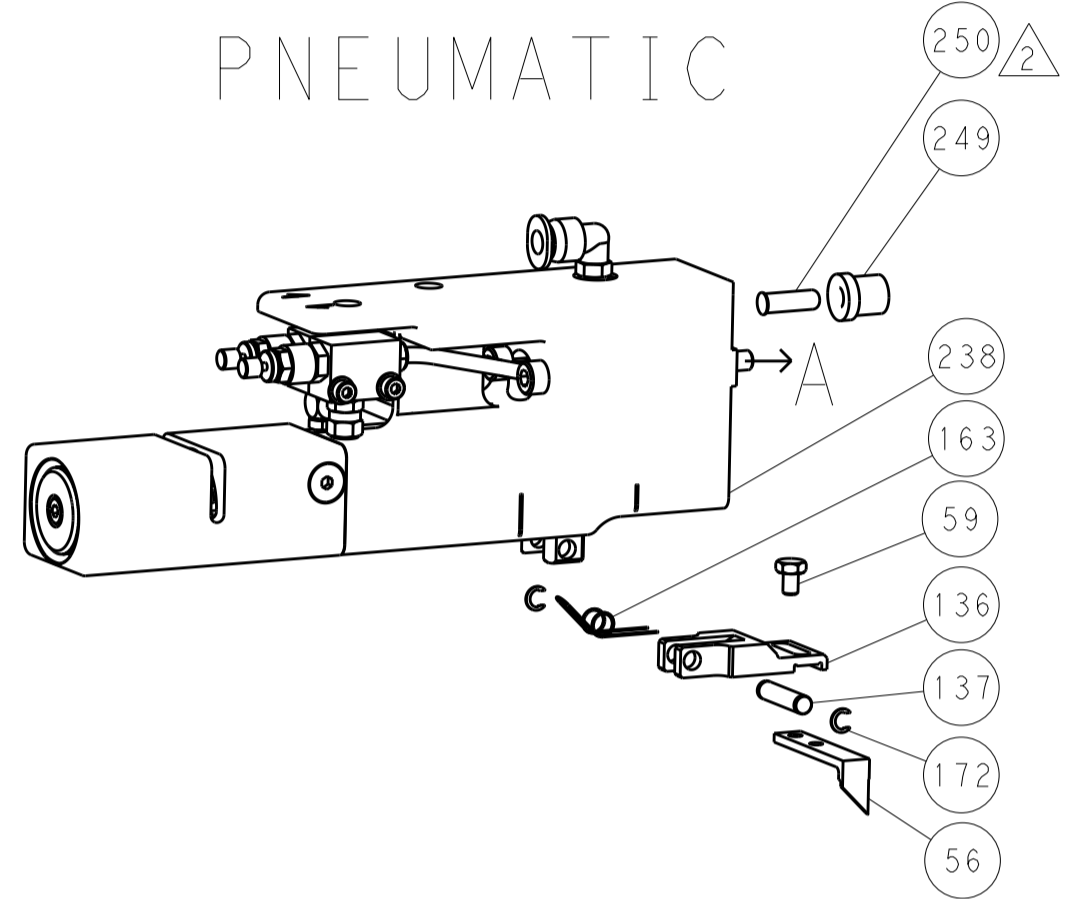
SHEETS 3 & 4 ARE NOT REQUIRED FOR ATLANTIC VERSION

| LOC |    | DIST |     | REVISIONS   |      |     |      |
|-----|----|------|-----|-------------|------|-----|------|
| A   | 66 | P    | LTM | DESCRIPTION | DATE | DMN | APVD |
|     |    | -    | -   | SEE SHEET 1 | -    | -   | -    |

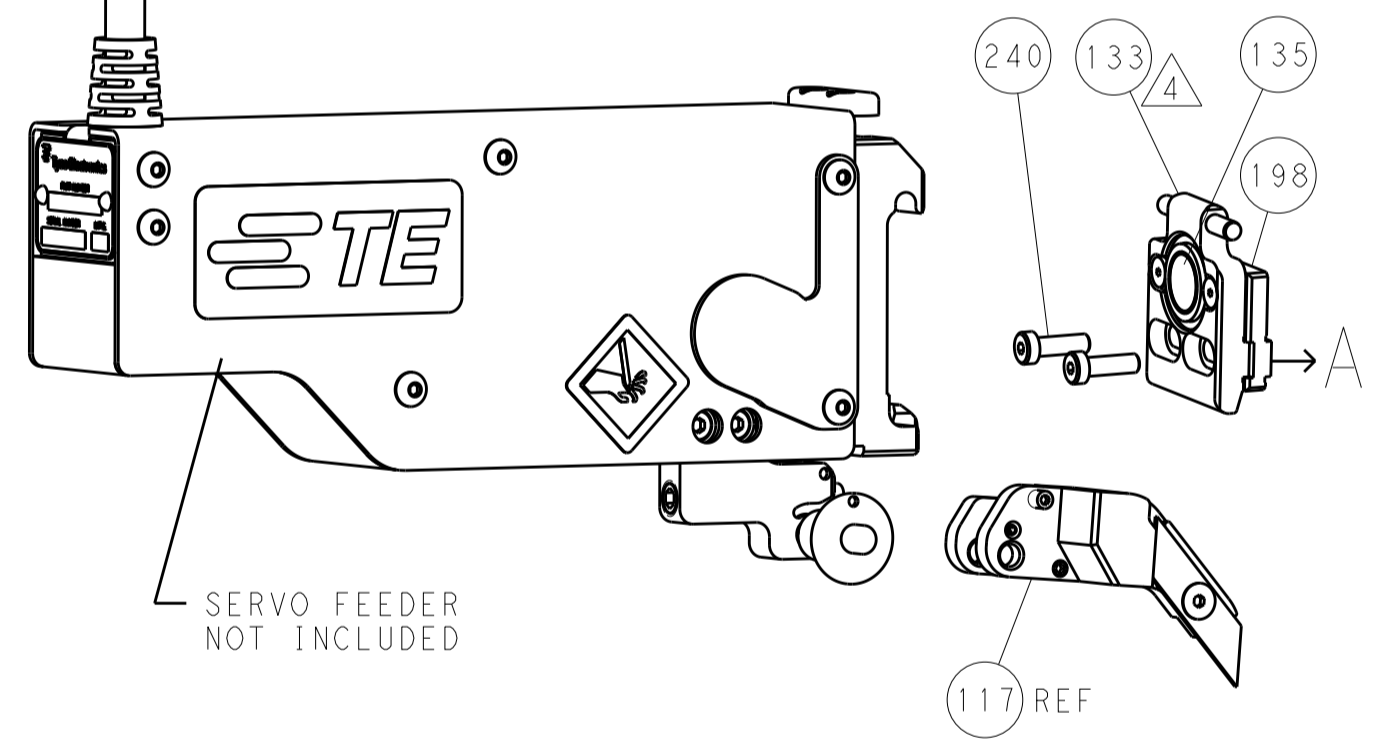
### FEED TYPE MECHANICAL



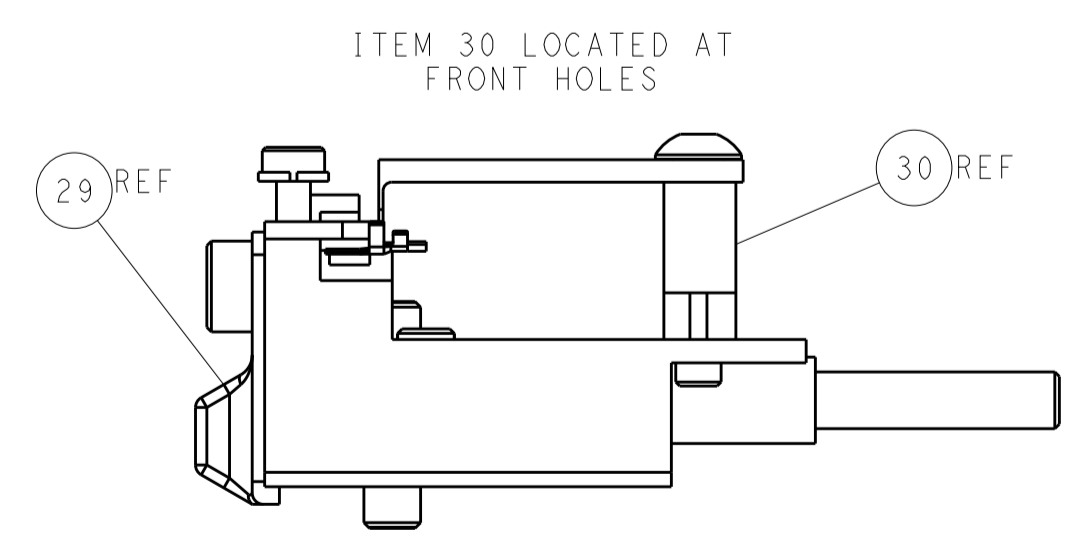
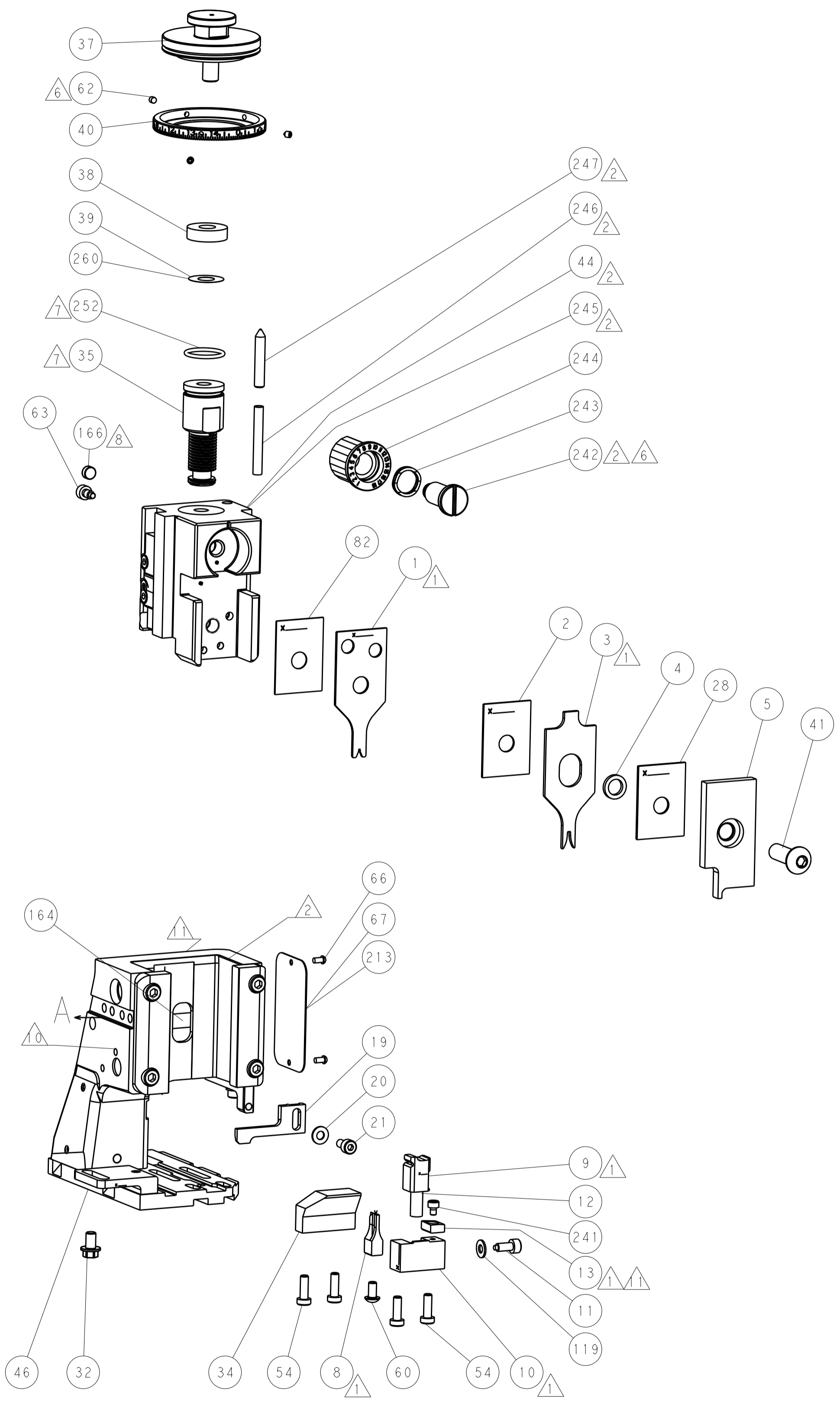
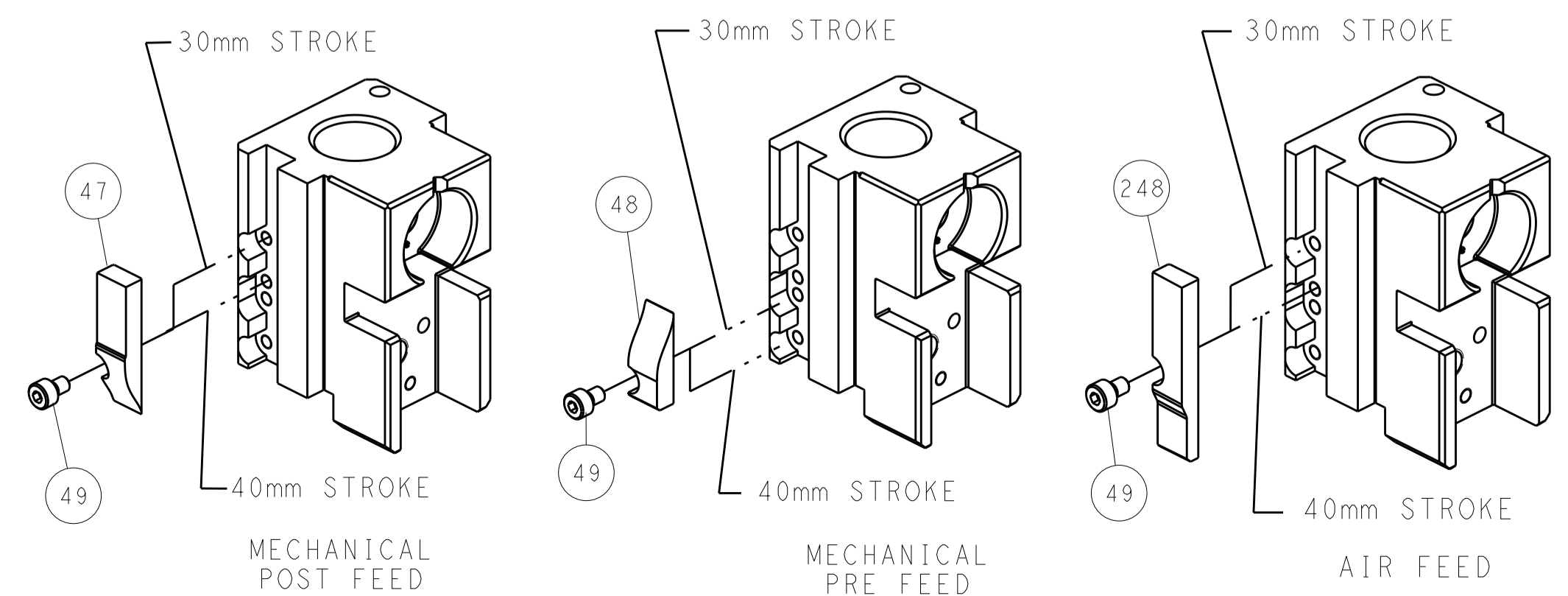
### PNEUMATIC



### SERVO LATCH PLATE



### CAM POSITIONS



**ATLANTIC VERSION**  
 Shown on sheets 1 of 4 & 2 of 4  
 (Pacific version shown on sheets 3 of 4 & 4 of 4)

|  |            |  |             |  |              |                               |   |
|--|------------|--|-------------|--|--------------|-------------------------------|---|
| DIMENSIONS:                            |            | TOLERANCES UNLESS OTHERWISE SPECIFIED: |             | DWG: HOFFNER 13AUG2012                             |              | TE Connectivity               |   |
| mm                                     | 0 PLC ±0.5 | 1 PLC ±0.5                             | 2 PLC ±0.13 | 3 PLC ±0.013                                       | 4 PLC ±0.013 | 5 ANGLE ±0°30'                | TE Connectivity Harrisburg, PA 17105-3608 |
| MATERIAL:                              |            |  |             | NAME: Ocean Side Feed Applicator                   |              | RESTRICTED TO:                |   |
| FINISH:                                |            |  |             | SIZE: CAGE CODE: DRAWING NO: A1 00779 ©=2151733    |              | SCALE: 1:1 SHEET 2 OF 4 REV B |   |
| Customer Accessible Production Drawing |            |  |             | SHEETS 3 & 4 ARE NOT REQUIRED FOR ATLANTIC VERSION |              |                               |   |

DIMENSIONING AND TOLERANCING PER ASME Y14.5M-2003

| PACIFIC VERSION TERMINATOR INTERFACE ADAPTER | PART NUMBER | REVISION | DESCRIPTION              | FEED TYPE         | APPLICATOR STYLE CONVERSION CHART |                       |           |             |           |           |                        |
|--|-------------|----------|--------------------------|-------------------|-----------------------------------|-----------------------|-----------|-------------|-----------|-----------|------------------------|
|  |             |          |                          |                   | CONVERT TO                        | PART NUMBERS REQUIRED |           |             |           |           |                        |
|  | 2-2151733-1 | B        | FINE CRIMP HEIGHT ADJUST | MECHANICAL        | PNEUMATIC FEED                    | 2119950-1             | 1338685-1 | 5-18022-5   | 2119641-2 | 2119799-1 | 2063440-1              |
|  |             |          |                          |                   | SERVO LATCH PLATE                 | 2119951-1             | -         | 8-2151733-5 | 1901094-3 | -         | 2168400-6 (QUANTITY 2) |
|  |             |          |                          |                   | SMART APPLICATOR                  | 2161326-1             | -         | 8-2151733-4 | -         | -         |                        |
|  | 2-2151733-2 | B        | FINE CRIMP HEIGHT ADJUST | PNEUMATIC         | MECHANICAL FEED                   | 2119949-1             | 1338685-1 | 5-18022-5   | 2119653-2 | -         | -                      |
|  |             |          |                          |                   | SERVO LATCH PLATE                 | 2119951-1             | -         | 8-2151733-5 | 1901094-3 | -         | 2168400-6 (QUANTITY 2) |
|  |             |          |                          |                   | SMART APPLICATOR                  | 2161326-1             | -         | 8-2151733-4 | -         | -         |                        |
|  | 2-2151733-5 | B        | FINE CRIMP HEIGHT ADJUST | SERVO LATCH PLATE | MECHANICAL FEED                   | 2119949-1             | 1338685-1 | 5-18022-5   | 2119653-2 | -         | -                      |
|  |             |          |                          |                   | PNEUMATIC FEED                    | 2119950-1             | 1338685-1 | 5-18022-5   | 2119641-2 | 2119799-1 | 2063440-1              |
|  | 2-2151733-7 | B        | FINE CRIMP HEIGHT ADJUST | NONE              | -                                 | -                     | -         | -           | -         | -         | -                      |
|  | 7-2151733-7 | B        | CRIMP TOOLING KIT        | -                 | -                                 | -                     | -         | -           | -         | -         | -                      |

| APPLICATOR DATA                      |                |      |
|--------------------------------------|----------------|------|
| CRIMP                                | SIZE           | TYPE |
| WIRE                                 | 0.89 mm [.035] | F    |
| INSUL                                | 1.78 mm [.070] | F    |
| APPLICATOR INSTRUCTIONS<br>408-10389 |                |      |

| TERMINAL DATA: J.S.T. TERMINAL TE CRIMP SPECIFICATION |   |
|---|---|
| TERMINAL NAME: BOARD-IN CRIMP                         |   |
| WIRE STRIP LENGTH<br>2.03-2.29 mm [.080-.090 IN]      | INSULATION DIAMETER RANGE<br>Ø0.80-1.30 mm [.031-.051 IN] |
| TERMINAL APPLICATION SPECIFICATION<br>J.S.T.          | -   |
| TERMINALS APPLIED                                     |   |
| TE TERMINAL<br>1572898-1                              | J.S.T. TERMINAL<br>SIN-002T-1.0                           |

| WIRE SIZE | CRIMP HEIGHT mm [INCH]     | CRIMP HEIGHT REFERENCE SETTING |
|-----------|----------------------------|--------------------------------|
| 26 AWG    | 0.70+/-0.05 [.028+/-0.002] | 8.6                            |
| 28 AWG    | 0.70+/-0.05 [.028+/-0.002] | 8.4                            |

- RECOMMENDED SPARE PARTS
- GREASE BEARING SURFACES LIGHTLY
- LUBRICATE DAILY PER THE APPLICATOR INSTRUCTION SHEET SUPPLIED WITH THE APPLICATOR.
- APPLICATOR SPECIFIC DATA TO BE ENTERED INTO BLANK MEMORY CHIP AT ASSEMBLY. SEE BELOW FOR PART NUMBER:  
 MECHANICAL FEED WITH "SMART APPLICATOR" CONVERSION: 8-2151733-4  
 PNEUMATIC FEED WITH "SMART APPLICATOR" CONVERSION: 8-2151733-4  
 SERVO FEED WITH "FINE CRIMP HEIGHT ADJUST": 8-2151733-5
- ADJUSTMENT OF THE STRIPPER MAY BE REQUIRED WHEN MOVING THE APPLICATOR BETWEEN BENCH AND LEADMAKER APPLICATIONS.
- APPLY PART NUMBER 1-23419-5 LOCTITE TO THREADS OF ITEMS 62 & 242.
- GREASE THREADS, GROOVE AND O-RING ON ITEMS 139 & 152.
- MAGNET MUST BE ORIENTED CORRECTLY IN ORDER TO PROPERLY ACTUATE THE COUNTER.
- CRIMP HEIGHT REFERENCE SETTING WAS THE SETTING USED WHEN THE APPLICATOR WAS QUALIFIED AT THE FACTORY. ADJUSTMENT MAY BE NECESSARY WHEN RUNNING APPLICATOR IN THE FIELD.
- SPARE FEED CAM STORAGE LOCATION REFER TO INSTRUCTION SHEET FOR ADDITIONAL INFORMATION.
- TO CONVERT THE APPLICATOR TO A NON-CARRIER CUTTING STYLE, REMOVE ITEM 13 AND ATTACH TO THE LOCATION ON BACK SIDE OF THE HOUSING. REFER TO INSTRUCTION SHEET FOR ADDITIONAL INFORMATION.

**\*WARNING**  
 ON INSTALLATION, SET WIRE DISC, ITEM 40 TO LARGEST WIRE SIZE SETTING. USE OF SETTINGS BELOW MINIMUM REQUIRED CRIMP HEIGHT SETTING WILL CAUSE DAMAGE TO CRIMP TOOLING.

| SET UP GAUGE | LOC | DIST | REVISIONS   |      |    |      |
|--------------|-----|------|-------------|------|----|------|
| 2119599-1    | A   | 66   | REV         | DATE | BY | APPD |
| -            | -   | -    | SEE SHEET 1 | -    | -  | -    |

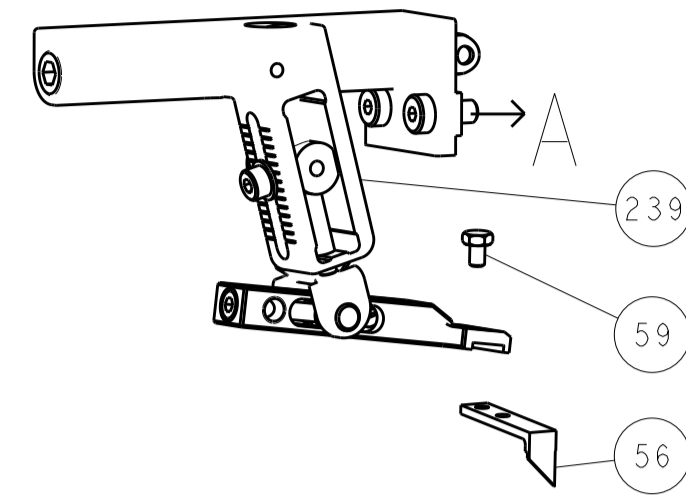
|   |     |     |     |     |             |                                     |     |
|---|-----|-----|-----|-----|-------------|-------------------------------------|-----|
| - | 1   | 1   | 1   | 1   | 2119782-1   | FINE ADJUST HEAD ASM, PACIFIC STYLE | 251 |
| - | -   | -   | 1   | -   | 2119640-1   | PUSH ROD, AIR FEED                  | 250 |
| - | -   | -   | 1   | -   | 2079988-1   | BUSHING, LCH5-12, MISUMI            | 249 |
| - | 1   | 1   | 1   | 1   | 1-22279-3   | SPRING, COMPRESSION                 | 246 |
| - | 1   | 1   | 1   | 1   | 2119082-8   | CAM, SNAIL, INSULATION ADJUSTMENT   | 244 |
| - | 1   | 1   | 1   | 1   | 2079764-1   | WASHER, WAVE SPRING, CREST-TO-CREST | 243 |
| - | 1   | 1   | 1   | 1   | 2119083-1   | RETAINER, INSULATION DIAL           | 242 |
| - | 1   | 1   | 1   | 1   | 7-18023-7   | SCR, SKT HD CAP M3 X 4.0            | 241 |
| - | -   | 2   | -   | -   | 2168400-6   | SHCS, LOW HEAD, RoHS, M5 X 16       | 240 |
| - | -   | -   | -   | 1   | 2119580-1   | MECHANICAL FEED ASSEMBLY            | 239 |
| - | -   | -   | 1   | -   | 2063440-1   | AIR FEED MODULE                     | 238 |
| - | -   | 1   | -   | -   | 2119740-2   | TAG IDENTIFICATION                  | 213 |
| - | -   | 1   | -   | -   | 1901094-3   | SPACER, FEEDER                      | 198 |
| - | -   | -   | 2   | -   | 21045-3     | RING, RETAIN, EXTERN, 3/16 CRESCENT | 172 |
| - | 1   | 1   | 1   | 1   | 994969-1    | MAGNET, RARE EARTH HIGH ENERGY      | 166 |
| - | REF | REF | REF | REF | 994970-2    | COUNTER, MAGNETIC                   | 164 |
| - | -   | -   | 1   | -   | 240638-1    | SPRING, FEED FINGER                 | 163 |
| - | 1   | 1   | 1   | 1   | 8-21084-1   | O-RING, .801 ID, .070 DIA. MAT.     | 152 |
| - | -   | -   | 1   | -   | 2119641-2   | FEED CAM, AIR FEED                  | 151 |
| - | 1   | 1   | 1   | 1   | 2119798-2   | DETENT PIN                          | 145 |
| - | 1   | 1   | 1   | 1   | 2079383-8   | SCR, BHSC, RoHS (M4 X 16)           | 144 |
| - | 4   | 4   | 4   | 4   | 2168400-5   | SHCS, LOW HEAD, RoHS, M4 X 20       | 143 |
| - | -   | -   | -   | 1   | 2119653-2   | FEED CAM, POST FEED                 | 142 |
| - | 1   | 1   | 1   | 1   | 1-2119656-0 | APPLICATOR BASIC ASSEMBLY, SF       | 141 |
| - | 1   | 1   | 1   | 1   | 2119650-1   | RAM, ASIAN STYLE, SIDE FEED         | 140 |
| - | 1   | 1   | 1   | 1   | 2119092-2   | BOLT, ADJUSTMENT                    | 139 |
| - | -   | -   | 1   | -   | 3-23627-7   | PIN, RETAIN, GRVD, 3/16 X .854      | 137 |
| - | -   | -   | 1   | -   | 2119799-1   | HOLDER, FEED FINGER, AF             | 136 |
| - | -   | REF | -   | -   | SEE NOTE 4  | MEMORY CHIP, PROGRAMMED             | 135 |
| - | -   | 1   | -   | -   | 1633743-1   | SERVO FEED LATCH ASM                | 133 |
| - | 1   | 1   | 1   | 1   | 1-18028-2   | WASHER, FLAT, REG M4                | 119 |
| - | -   | REF | -   | -   | 2119944-1   | FEED FINGER ASSEMBLY, SF            | 117 |
| - | 1   | 1   | 1   | 1   | 455888-5    | SPACER, CRIMPER                     | 82  |
| - | 1   | 1   | 1   | 1   | 2119956-1   | DOCUMENTATION PACKAGE               | 71  |
| - | 1   | -   | 1   | 1   | 2119740-1   | TAG IDENTIFICATION                  | 67  |
| - | 2   | 2   | 2   | 2   | 2168078-1   | SCREW, DRIVE, RH, RoHS              | 66  |
| - | 1   | 1   | 1   | 1   | 2119793-1   | LIMITER, ADJUSTMENT BOLT            | 63  |
| - | 3   | 3   | 3   | 3   | 992763-5    | SCR, SET, SOC, CONE POINT, M3 x 4.0 | 62  |
| - | -   | -   | 1   | 1   | 5-18022-5   | SCR, HEX HD CAP, M4 X 6.0           | 59  |
| - | -   | -   | 1   | 1   | 1338685-1   | PAWL, FEED                          | 56  |
| - | -   | -   | 1   | 2   | 18023-9     | SCR, SKT HD CAP M4 X 6.0            | 49  |
| - | -   | -   | -   | 1   | 2119652-1   | FEED CAM, PRE FEED                  | 48  |
| - | 1   | 1   | 1   | 1   | 2079383-7   | SCR, BHSC, RoHS (M8 X 25)           | 41  |
| - | 1   | 1   | 1   | 1   | 2119645-1   | DISC, NUMBERED FA WIRE ADJUSTMENT   | 40  |
| - | 1   | 1   | 1   | 1   | 2119957-1   | APPLICATOR SHIM PACK                | 39  |
| - | 1   | 1   | 1   | 1   | 2119644-1   | RAM WASHER, PRECISION               | 38  |
| - | 1   | 1   | 1   | 1   | 3-1752356-1 | SUPPORT, TERMINAL                   | 34  |
| - | 2   | 2   | 2   | 2   | 2079383-5   | SCR, BHSC, RoHS (M4 X 20)           | 33  |
| - | 1   | 1   | 1   | 1   | 2161328-1   | HEX HEAD, FLANGED, M5 x 8mm LONG    | 32  |
| - | 1   | 1   | 1   | 1   | 1320908-6   | SPACER, STRIP GUIDE                 | 30  |
| - | 1   | 1   | 1   | 1   | 2119959-1   | ASSEMBLY, STRIP GUIDE               | 29  |
| - | 1   | 1   | 1   | 1   | 1-455888-0  | SPACER, CRIMPER                     | 28  |
| - | 1   | 1   | 1   | 1   | 1320928-2   | STRIP GUIDE                         | 24  |
| - | 1   | 1   | 1   | 1   | 2168083-2   | SCR, SKT HD CAP, RoHS, M4 X 8.0     | 21  |
| - | 1   | 1   | 1   | 1   | 1-18028-2   | WASHER, FLAT, REG M4                | 20  |
| - | 1   | 1   | 1   | 1   | 2119533-1   | STRIPPER, SIDE FEED                 | 19  |
| - | 1   | 1   | 1   | 1   | 2119806-1   | INSERT, SHEAR                       | 13  |
| - | 1   | 1   | 1   | 1   | 3-22280-3   | SPRING, COMPRESSION                 | 12  |
| - | 1   | 1   | 1   | 1   | 1-356885-4  | STOP, SHEAR                         | 11  |
| - | 1   | 1   | 1   | 1   | 2119805-1   | SHEAR HOLDER, FRONT                 | 10  |
| - | 1   | 1   | 1   | 1   | 462006-6    | FLOATING SHEAR, FRONT               | 9   |
| - | 1   | 1   | 1   | 1   | 8-1333225-4 | ANVIL, COMBINATION                  | 8   |
| - | -   | -   | -   | -   | -           | -                                   | 7   |
| - | -   | -   | -   | -   | -           | -                                   | 6   |
| - | 1   | 1   | 1   | 1   | 2119757-5   | DEPRESSOR, SHEAR                    | 5   |
| - | 1   | 1   | 1   | 1   | 238011-6    | BLOCK, CRIMPER SPACER               | 4   |
| - | 1   | 1   | 1   | 1   | 4-1633961-8 | CRIMPER, INSULATION F PREMIUM       | 3   |
| - | 1   | 1   | 1   | 1   | 455888-8    | SPACER, CRIMPER                     | 2   |
| - | 1   | 1   | 1   | 1   | 1803091-2   | CRIMPER, WIRE PREMIUM               | 1   |

**PACIFIC VERSION**  
 Shown on sheets 3 of 4 & 4 of 4  
 (Atlantic version shown on sheets 1 of 4 & 2 of 4)

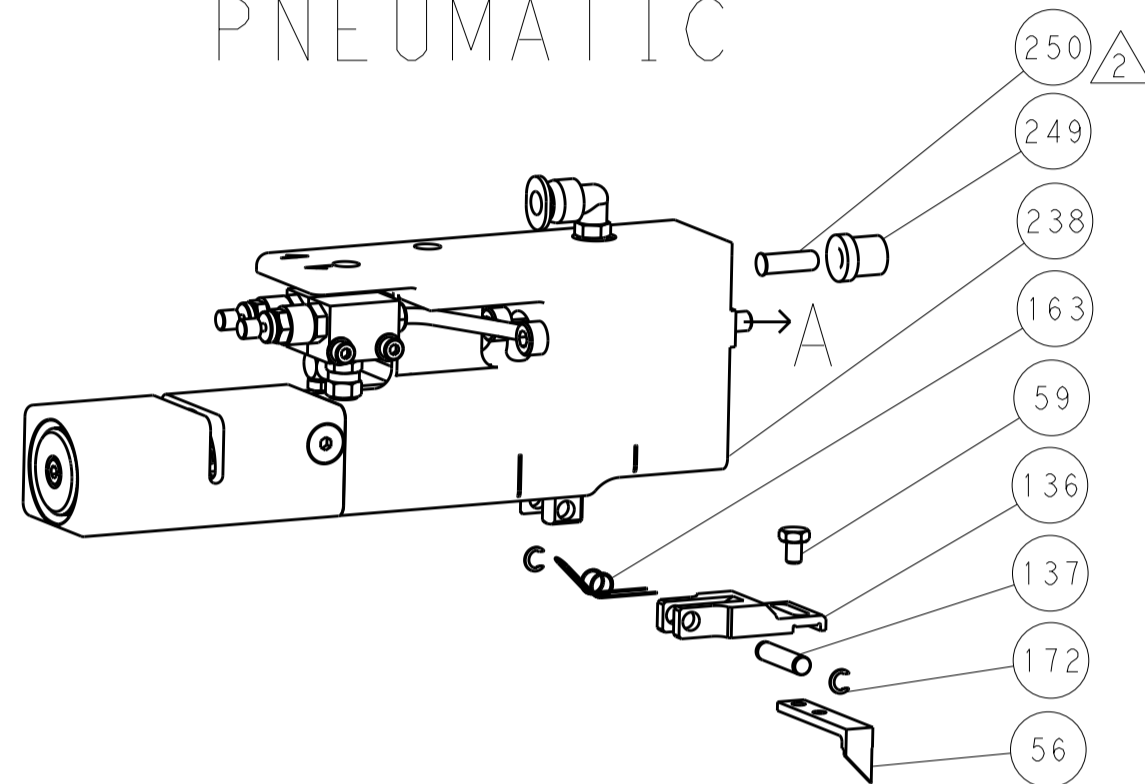
| DIMENSIONS: |              | TOLERANCES UNLESS OTHERWISE SPECIFIED: |                | DATE                                   | BY      | CHKD     | APPD     | REV          |
|-------------|--------------|--|----------------|--|---------|----------|----------|--------------|
| mm          | 0 PLC ±.5    | 1 PLC ±0.5                             | 2 PLC ±0.13    | 13AUG2012                              | HOFFNER | T. ELBIN | T. ELBIN | 1            |
|             | 3 PLC ±0.013 | 4 PLC ±.5                              | ANGLES ±.0°30' | 14AUG2012                              |         |          |          | 2            |
| MATERIAL    | FINISH       | WEIGHT                                 | SCALE          | Customer Accessible Production Drawing |         | SCALE    |          | SHEET 3 OF 4 |

| LOC |    | DIST |     | REVISIONS   |      |     |      |
|-----|----|------|-----|-------------|------|-----|------|
| A   | 66 | P    | LTM | DESCRIPTION | DATE | DWN | APVD |
|     |    | -    |     | SEE SHEET 1 |      |     |      |

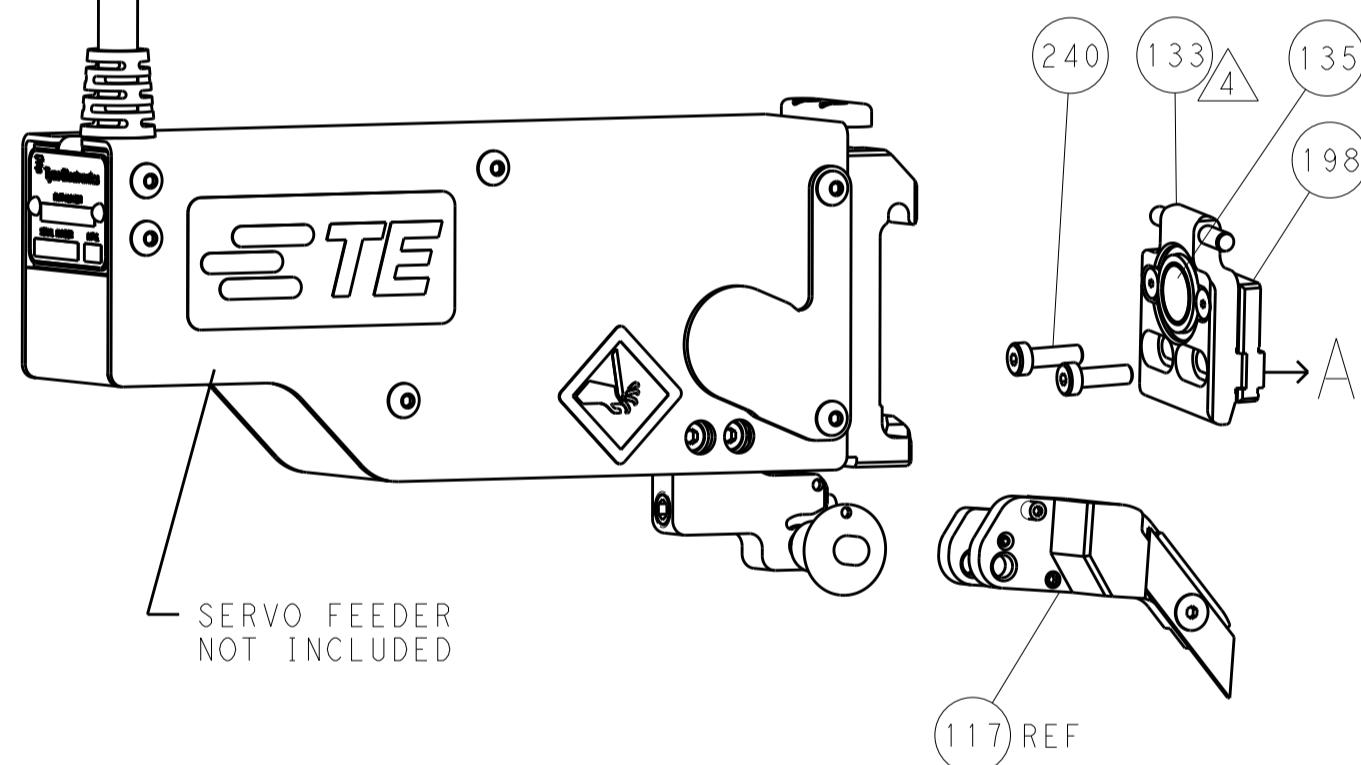
# FEED TYPE MECHANICAL



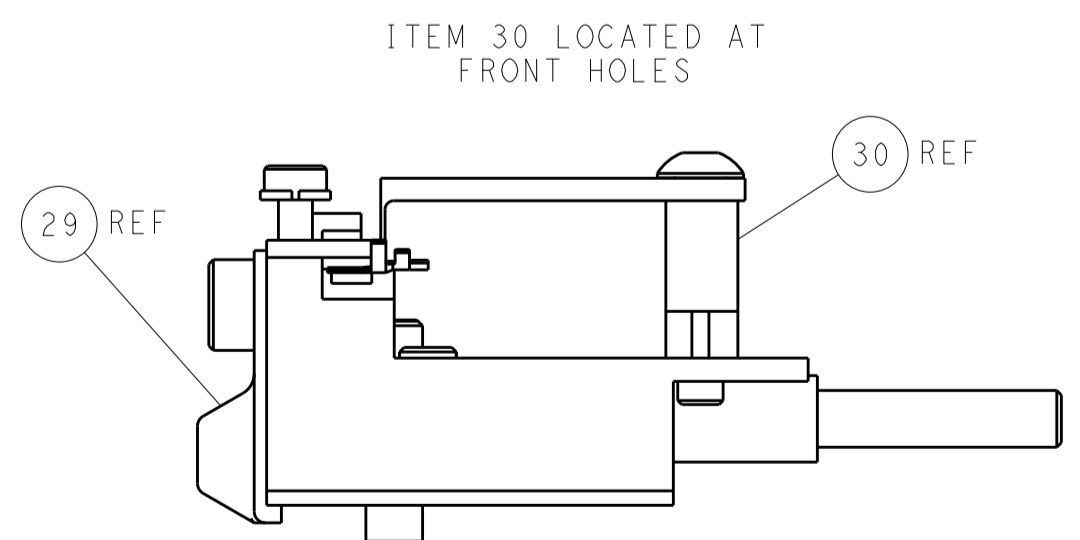
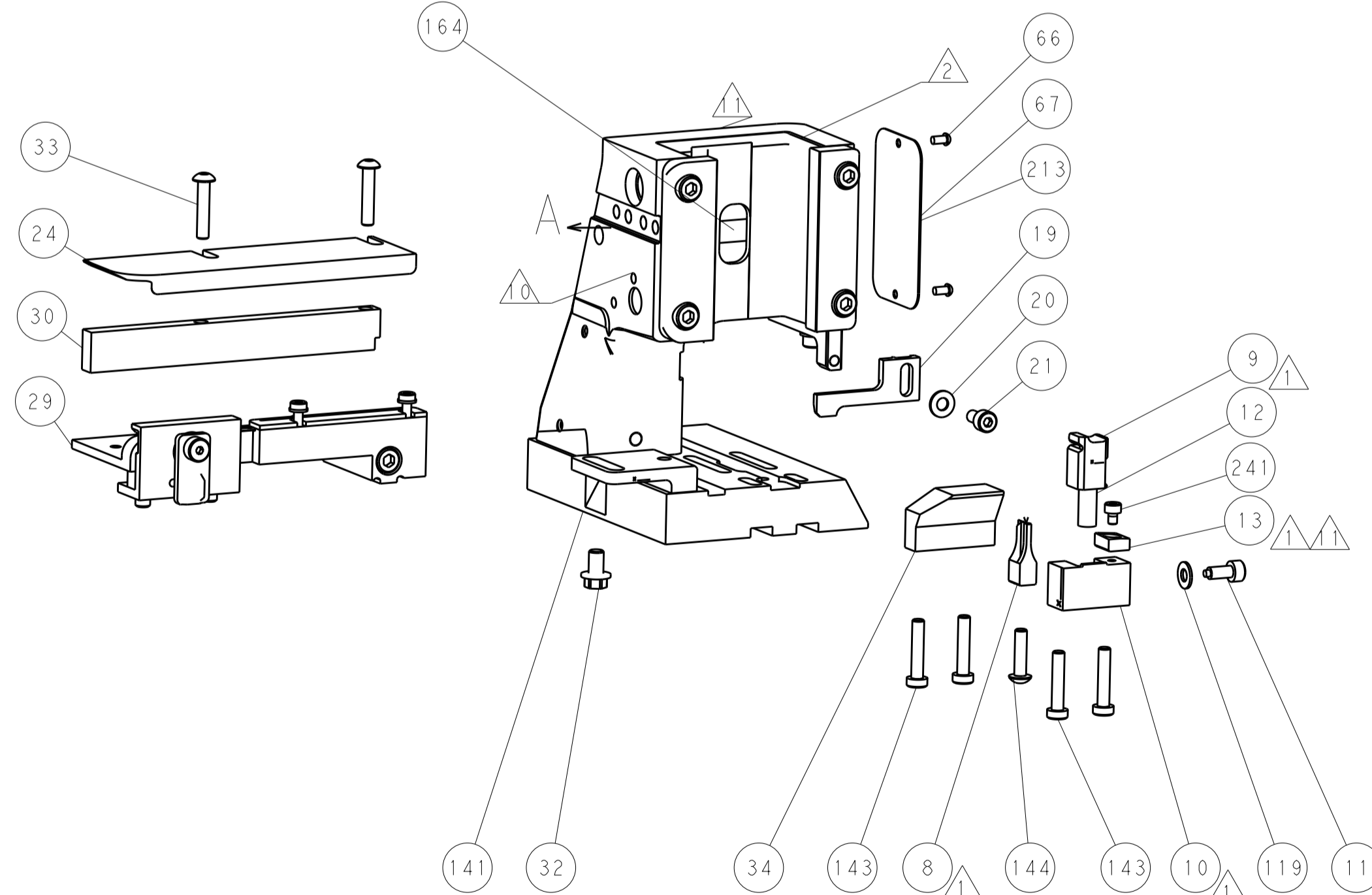
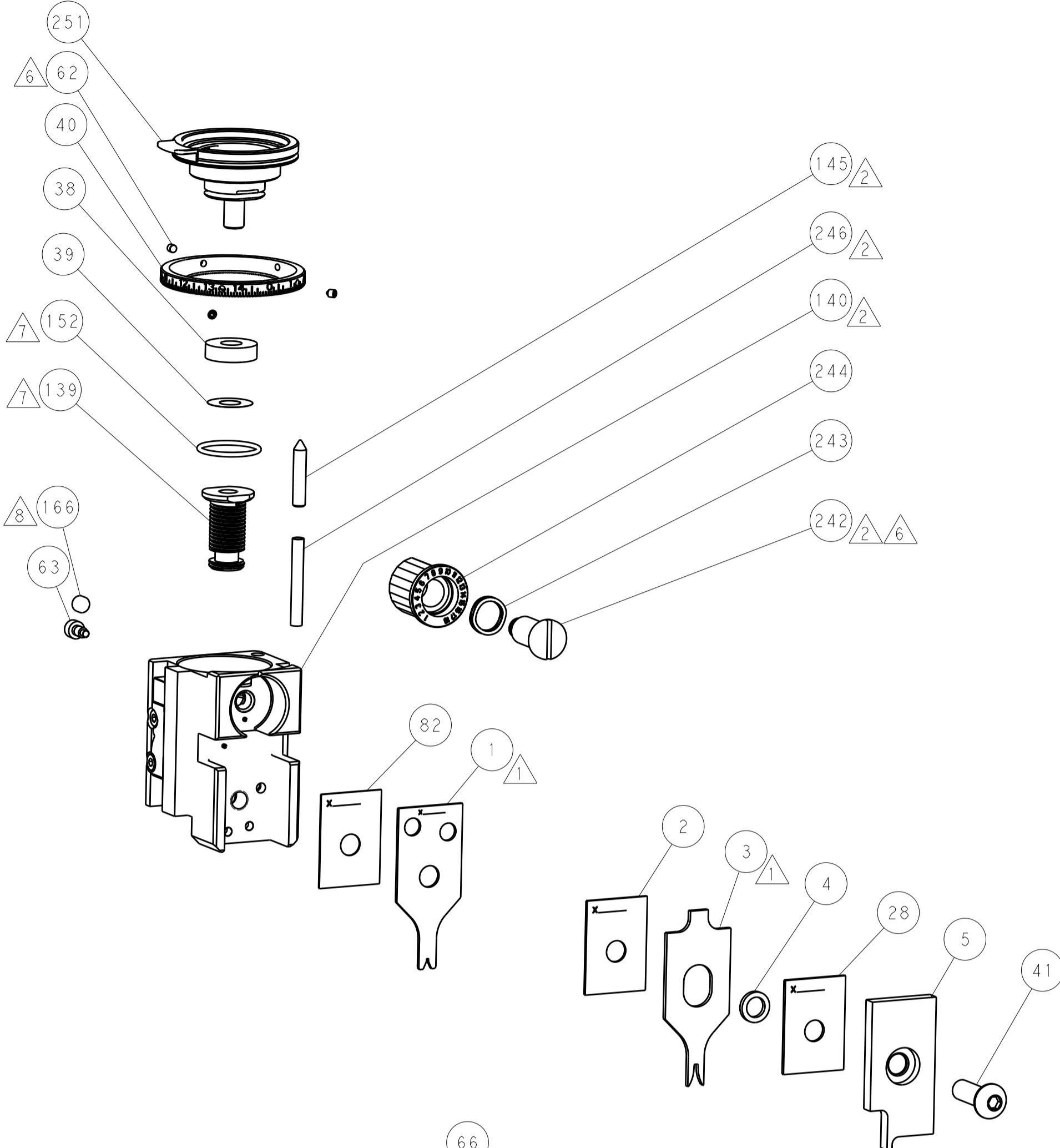
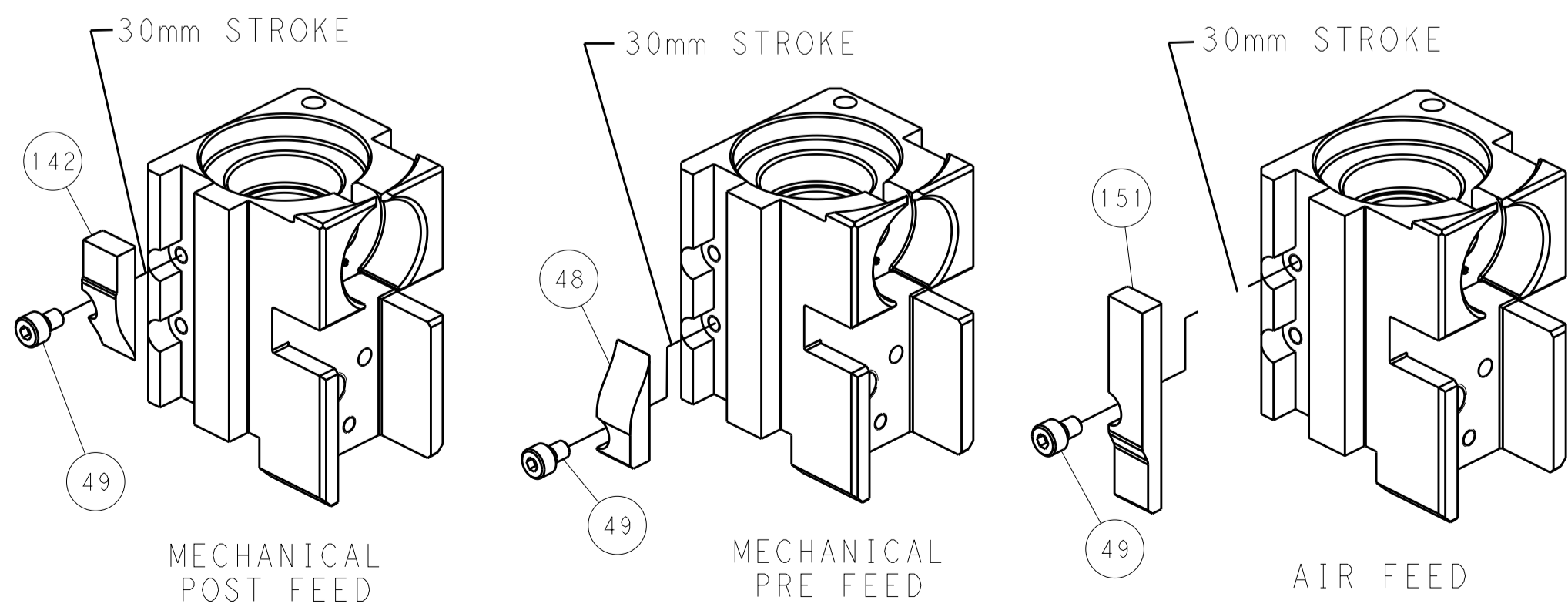
# PNEUMATIC



# SERVO LATCH PLATE



# CAM POSITIONS



**PACIFIC VERSION**  
 Shown on sheets 3 of 4 & 4 of 4  
 (Atlantic version shown on sheets 1 of 4 & 2 of 4)

|             |            |  |             |                                  |              |                     |                           |
|-------------|------------|--|-------------|----------------------------------|--------------|---------------------|---------------------------|
| DIMENSIONS: |            | TOLERANCES UNLESS OTHERWISE SPECIFIED: |             | DWN: HOFFNER 13AUG2012           |              | STE TE Connectivity |                           |
| mm          | 0 PLC ±0.5 | 1 PLC ±0.5                             | 2 PLC ±0.13 | 3 PLC ±0.13                      | 4 PLC ±0.013 | 14AUG2012           | Harrisburg, PA 17105-3608 |
| MATERIAL:   |            | FINISH:                                |             | NAME: Ocean Side Feed Applicator |              | RESTRICTED TO:      |                           |
|             |            |  |             | SIZE: A1                         |              | CAGE CODE: 00779    |                           |
|             |            |  |             | DRAWING NO: 2151733              |              | SCALE: 1:1          |                           |
|             |            |  |             | SHEET: 4                         |              | REV: B              |                           |