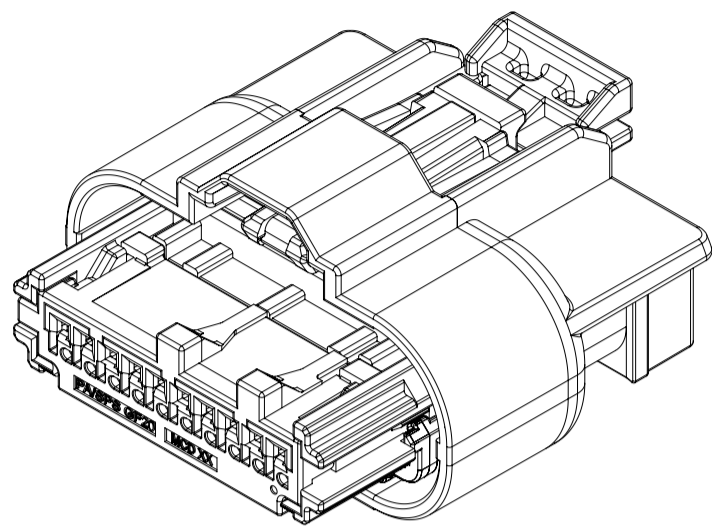


| TABLE OF CONTENTS | |
|-------------------|-------------------------------|
| SHEET NO. | SHEET DESCRIPTION |
| 1 | NOTES AND PART NUMBER CHART |
| 2 | KEY CONFIGURATION |
| 3 | RECEPTACLE CONNECTOR ASSEMBLY |

| PART NUMBER AND MATING INTERFACE CHART | | | | | | |
|--|-----|-------------|----------------------------|--------------|-----------------------|--|
| PART NUMBER | KEY | COVER COLOR | TERMINAL POSITIONS PLUGGED | CPA INCLUDED | INTERFACE PART NUMBER | |
| 349671001 | A | BLACK | NONE | YES | 349681801 | |
| 349671002 | B | LIGHT GRAY | NONE | YES | 349681802 | |
| 349671003 | C | DARK GRAY | NONE | YES | 349681803 | |
| 349671004 | D | STONE GRAY | NONE | YES | 349681804 | |
| 349671005 | A | BLACK | NONE | NO | 349681801 | |
| 349671006 | B | LIGHT GRAY | NONE | NO | 349681802 | |
| 349671007 | C | DARK GRAY | NONE | NO | 349681803 | |
| 349671008 | D | STONE GRAY | NONE | NO | 349681804 | |
| 349671151 | A | BLACK | 5, 6, 7, 8 | YES | 349681801 | |



1X10

NOTES: VALID UNLESS OTHERWISE SPECIFIED

1. GENERAL:

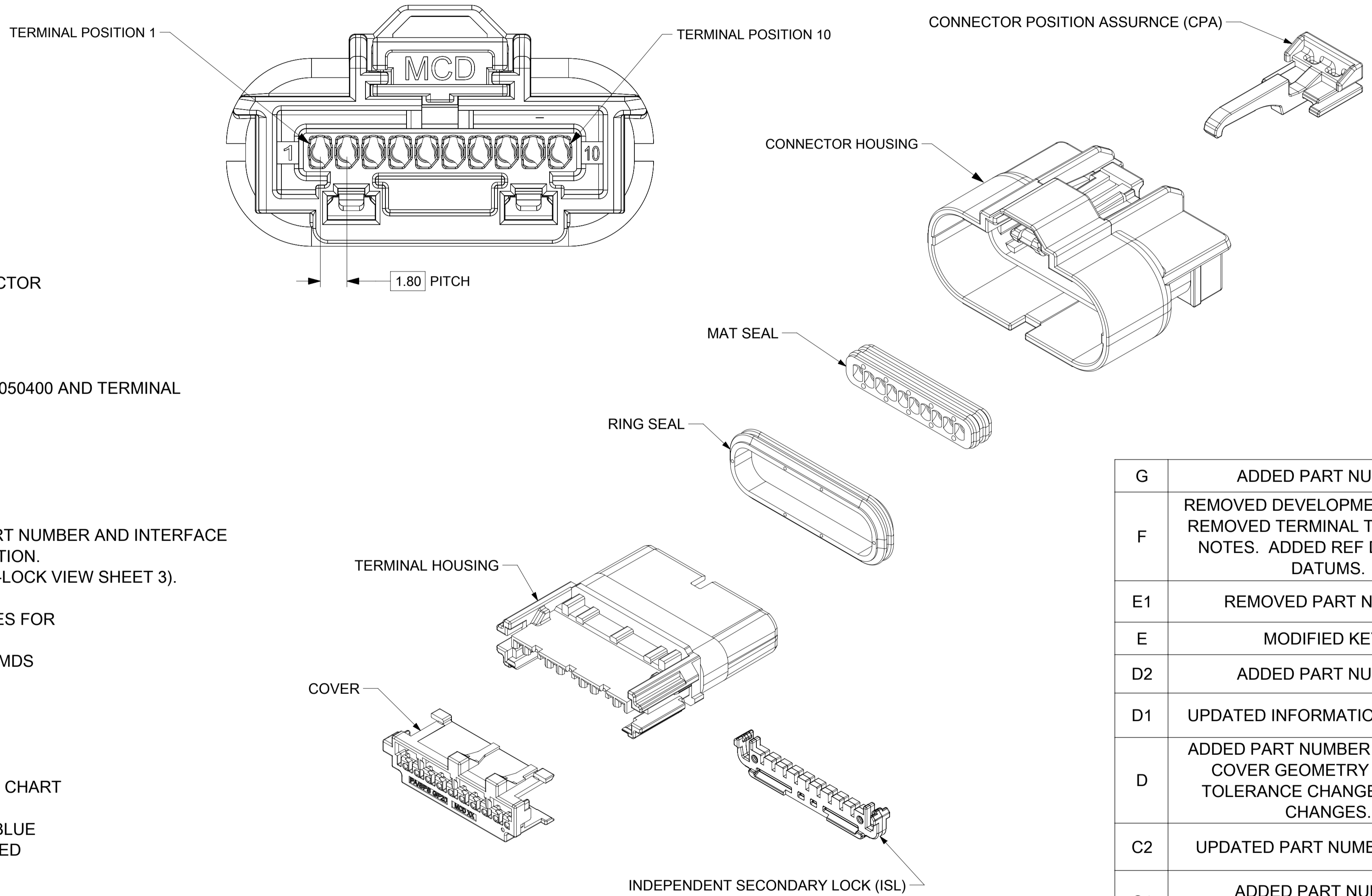
- A. APPLICATION SPECIFICATION SEE: AS-34894-0001
-CONTAINS: PRODUCT INTRODUCTION, PRODUCT SUMMARY, CONNECTOR ASSEMBLY, PACKAGING INFORMATION, CONNECTOR MATING, SERVICE INSTRUCTIONS, ELECTRICAL CONTINUITY CHECKING, CRIMPING, AND TROUBLESHOOTING.
- B. TERMINALS TO BE USED WITH THIS ASSEMBLY:
MOLEX CTX50 SEALED RECEPTACLE TERMINALS
FOR INFORMATION ON TERMINALS SEE MOLEX DRAWING 349050400 AND TERMINAL PRODUCT SPECIFICATION PS-34905-001.
- C. CONNECTOR PRODUCT SPECIFICATION SEE 349670001 PS
CONTAINS: PRODUCT INTRODUCTION, PRODUCT SUMMARY, RATINGS AND PRODUCT VALIDATION.
VALIDATED TO USCAR 2 REV 6.
RATINGS: T3 V1 S2
- D. DESIGNED TO MATE WITH DEVICE INTERFACE AS SPECIFIED IN PART NUMBER AND INTERFACE CHART. SEE MOLEX DRAWING 349681800 FOR INTERFACE SPECIFICATION.
- E. ASSEMBLY SHIPPED WITH ISL IN PRE-LOCK POSITION (SEE ISL PRE-LOCK VIEW SHEET 3).
- F. PACKAGING SPECIFICATION PER MOLEX DRAWING: PK-31301-898
- G. PARTS MUST BE IN COMPLIANCE TO MOLEX CHEMICAL SUBSTANCES FOR PRODUCTS AND PACKAGING SPECIFICATION: ES-40000-5016
- H. DATA MUST BE SUBMITTED UNDER THE MOLEX PART NUMBER TO IMDS (COMPANY ID#13255)

2. DESIGN - MATERIALS:

- CONNECTOR HOUSING: SPS/NYLON GF20 BLACK
- TERMINAL HOUSING: SPS/NYLON GF20 BLACK
- COVER: SPS/NYLON GF20 COLORS IN PART NUMBER CHART
- ISL: SPS GF30 NATURAL
- MAT SEAL: INHERENTLY LUBRICATED SILICONE LIGHT BLUE
- RING SEAL: INHERENTLY LUBRICATED SILICONE RUST RED
- CPA (OPTIONAL): PBT GF30 RED

3. DESIGN - GEOMETRY:

- A. ALL GRAPHIC DATA IS BASIC (NO TOLERANCE) AND MUST BE TAKEN FROM THE DATA FILE AT ITS LATEST REVISION.
- B. GEOMETRIC DIMENSIONS AND TOLERANCES PER ASME Y14.5M-2009
- C. EDGES AND UNDIMENSIONED DETAILS PER ISO13715
- D. CORNERS SHOWN AS SHARP TO BE R 0.2 MAX.
- E. LETTERING SHALL BE 0.15 MAX RAISED IN 0.25 MAX RECESS PAD.
THIS INCLUDES RECYCLING CODE, CAVITY ID, VENDOR IDENTIFICATION, AND CUSTOMER MATERIAL NUMBER.
- F. VISUAL DEFECTS SHALL MEET COSMETIC STANDARD PS-45499-002 (Class B).
- G. PARTS ARE LASER MARKED WITH PART NUMBER AND DATE CODE



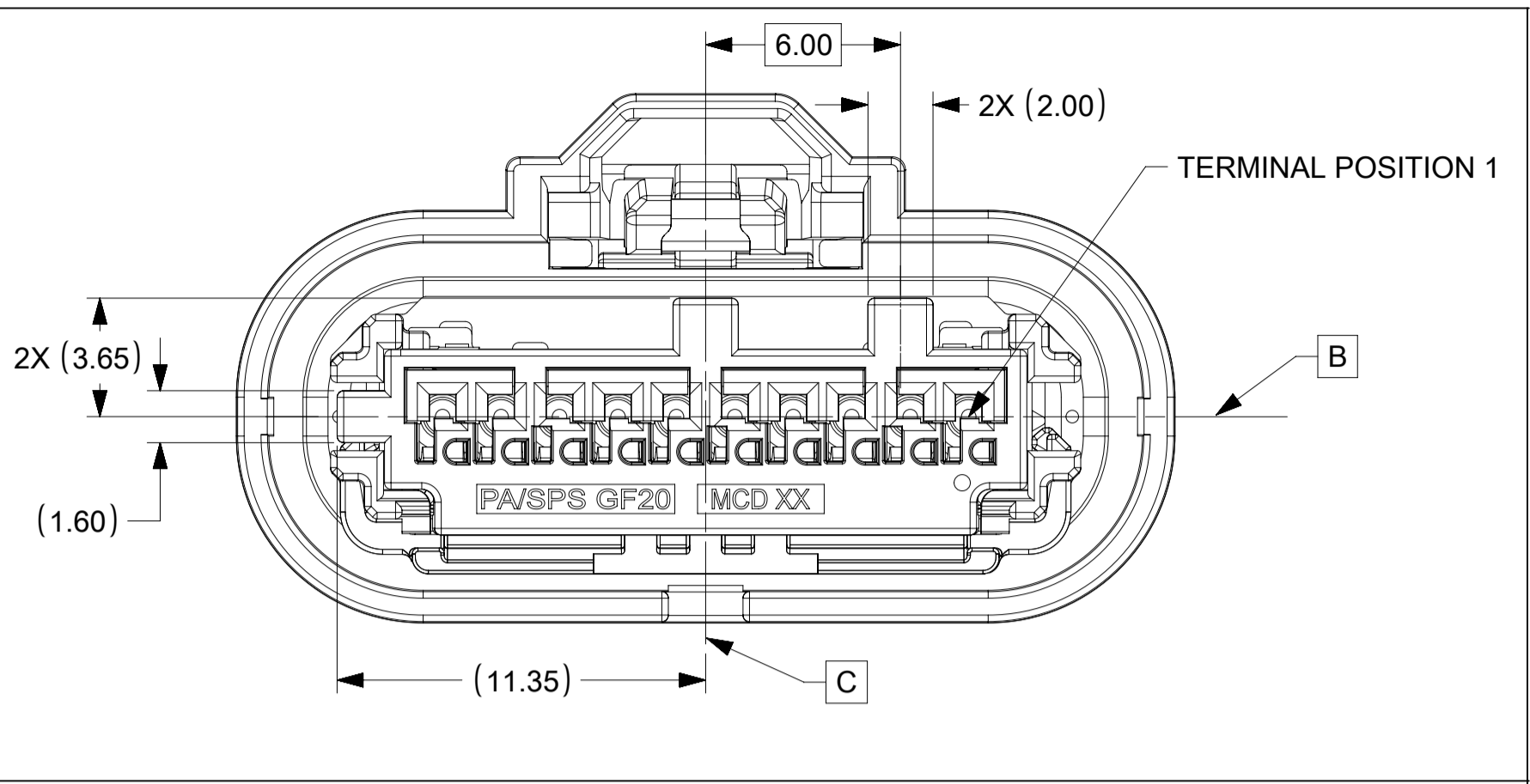
| REV | REV DESCRIPTION |
|-----|---|
| G | ADDED PART NUMBER |
| F | REMOVED DEVELOPMENT NOTICE. REMOVED TERMINAL TABLE FROM NOTES. ADDED REF DIMS TO ID DATUMS. |
| E1 | REMOVED PART NUMBER |
| E | MODIFIED KEYS |
| D2 | ADDED PART NUMBER |
| D1 | UPDATED INFORMATION IN NOTES |
| D | ADDED PART NUMBER TO CHART. COVER GEOMETRY UPDATE. TOLERANCE CHANGES. NOTES CHANGES. |
| C2 | UPDATED PART NUMBER CHART |
| C1 | ADDED PART NUMBER. CORRECTIONS & CLARIFICATIONS |
| C | RELEASE |
| REV | REV DESCRIPTION |

| INSPECTION NUMBER LOG | |
|-----------------------|-----------------|
| LAST NUMBER: | 15 |
| ADDED: | 2,4,7,8,9,13,14 |

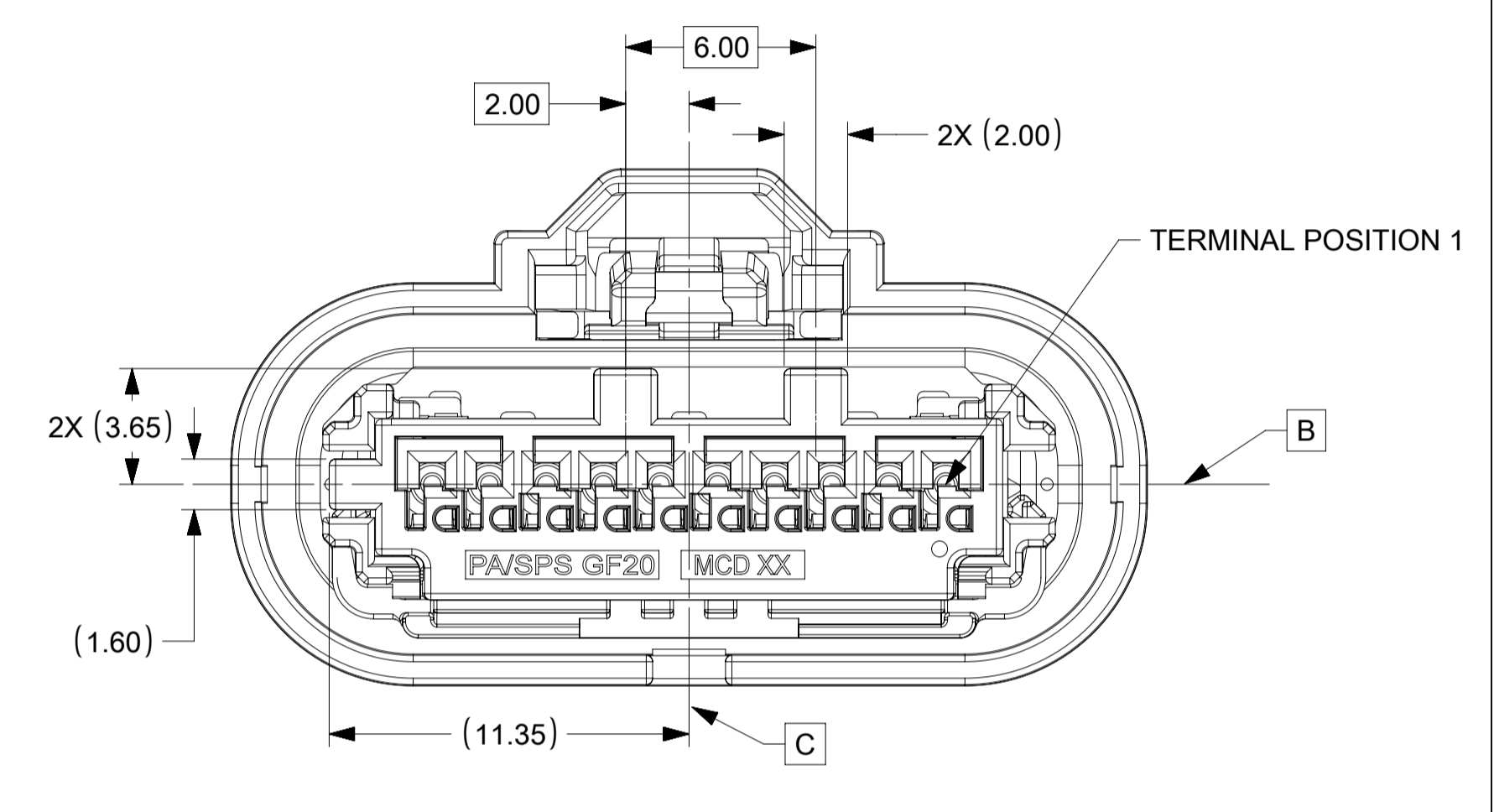
THIS DRAWING CONTAINS INFORMATION THAT IS PROPRIETARY TO MOLEX ELECTRONIC TECHNOLOGIES, LLC AND SHOULD NOT BE USED WITHOUT WRITTEN PERMISSION

| | | | | | |
|--|--|--|--|--|--|
| ADDED PART NUMBER 609707 EC NO: 2018/12/27 DRWN: JRUTTER CHKD: JRUTTER REV: APPR: JCONDON | GENERAL TOLERANCES (UNLESS SPECIFIED) DIMENSION UNITS: mm SCALE: 1:1 | | | | |
| | ANGULAR TOL ± 0.3 ° 4 PLACES ± 3 PLACES ± 2 PLACES ± 0.1 1 PLACE ± 0.2 0 PLACES ± | | DRWN BY: MNS02 DATE: 2016/04/26 CHK'D BY: KDEKOSKI DATE: 2016/05/19 | MINI50 SEALED 1X10 RCPT ASSY PRODUCT CUSTOMER DRAWING | |
| | DRAFT WHERE APPLICABLE MUST REMAIN WITHIN DIMENSIONS | | DRAWING SIZE: A1 THIRD ANGLE PROJECTION | | SERIES: 34967 MATERIAL NUMBER: SEE CHART CUSTOMER: |
| | G | | DOCUMENT NUMBER: 349671000 DOC TYPE: PSD DOC PART: 000 SHEET NUMBER: 1 OF 3 | | |

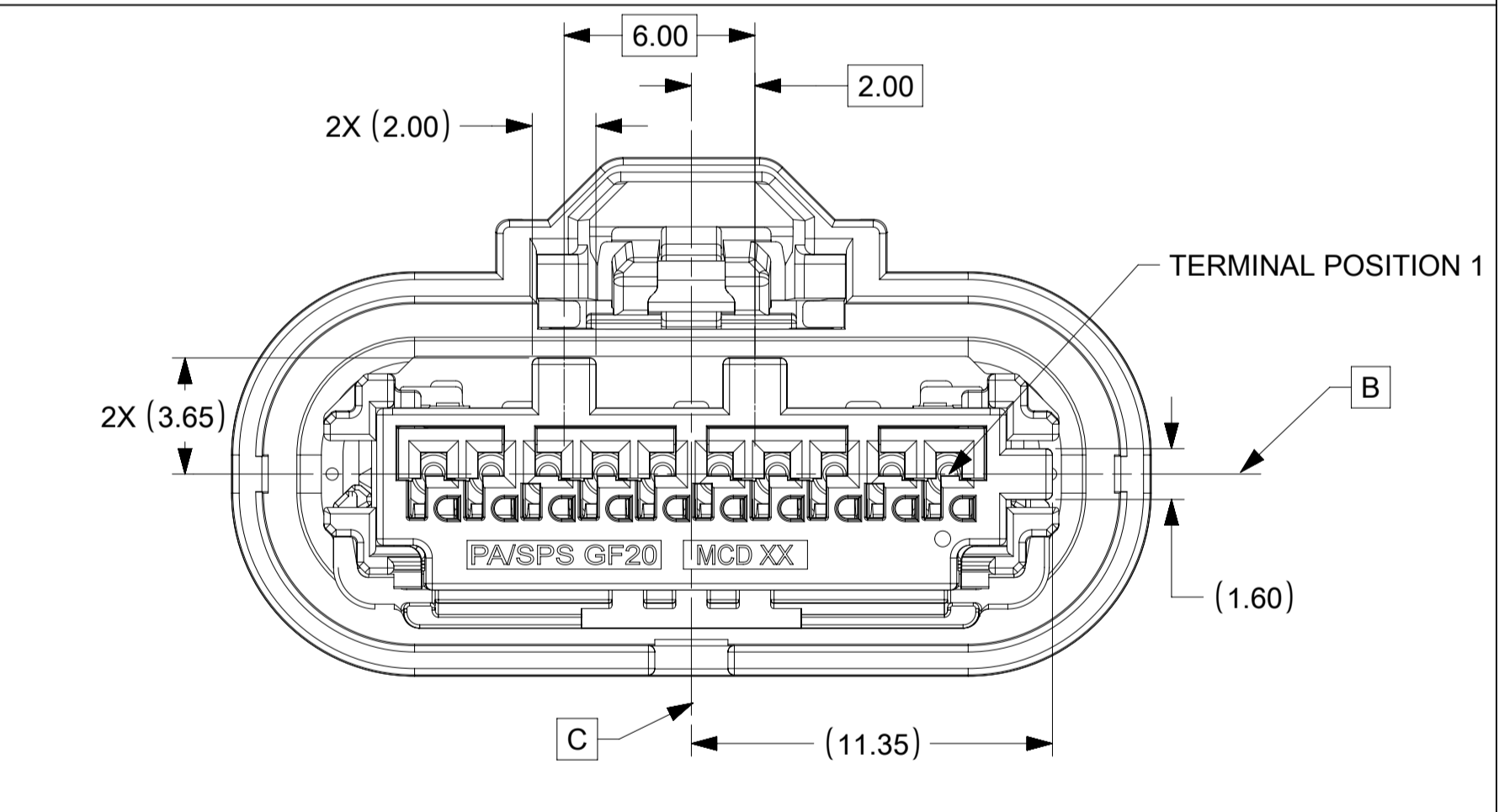
SHEET DESCRIPTION
KEY CONFIGURATIONS



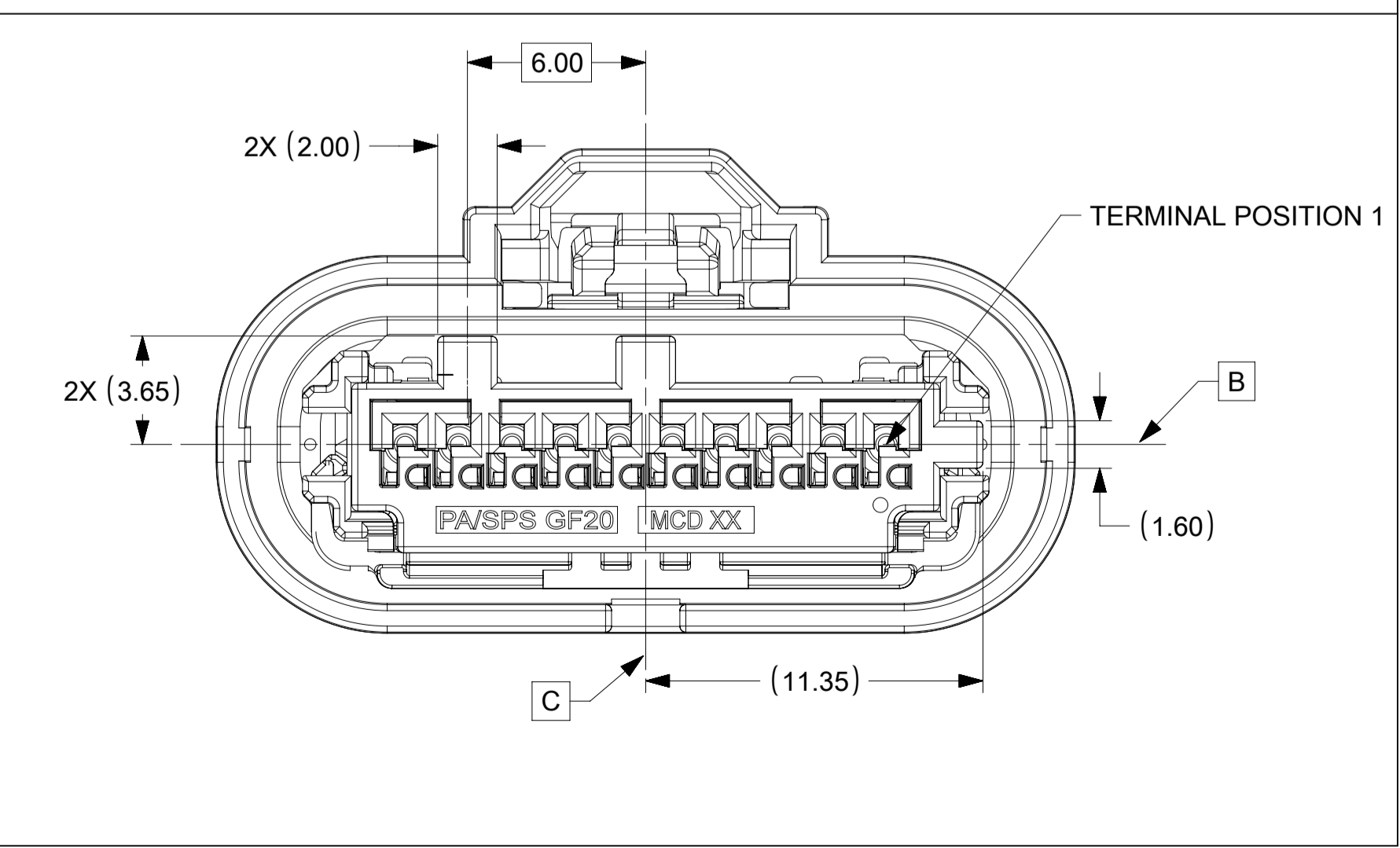
KEY A



KEY B



KEY C



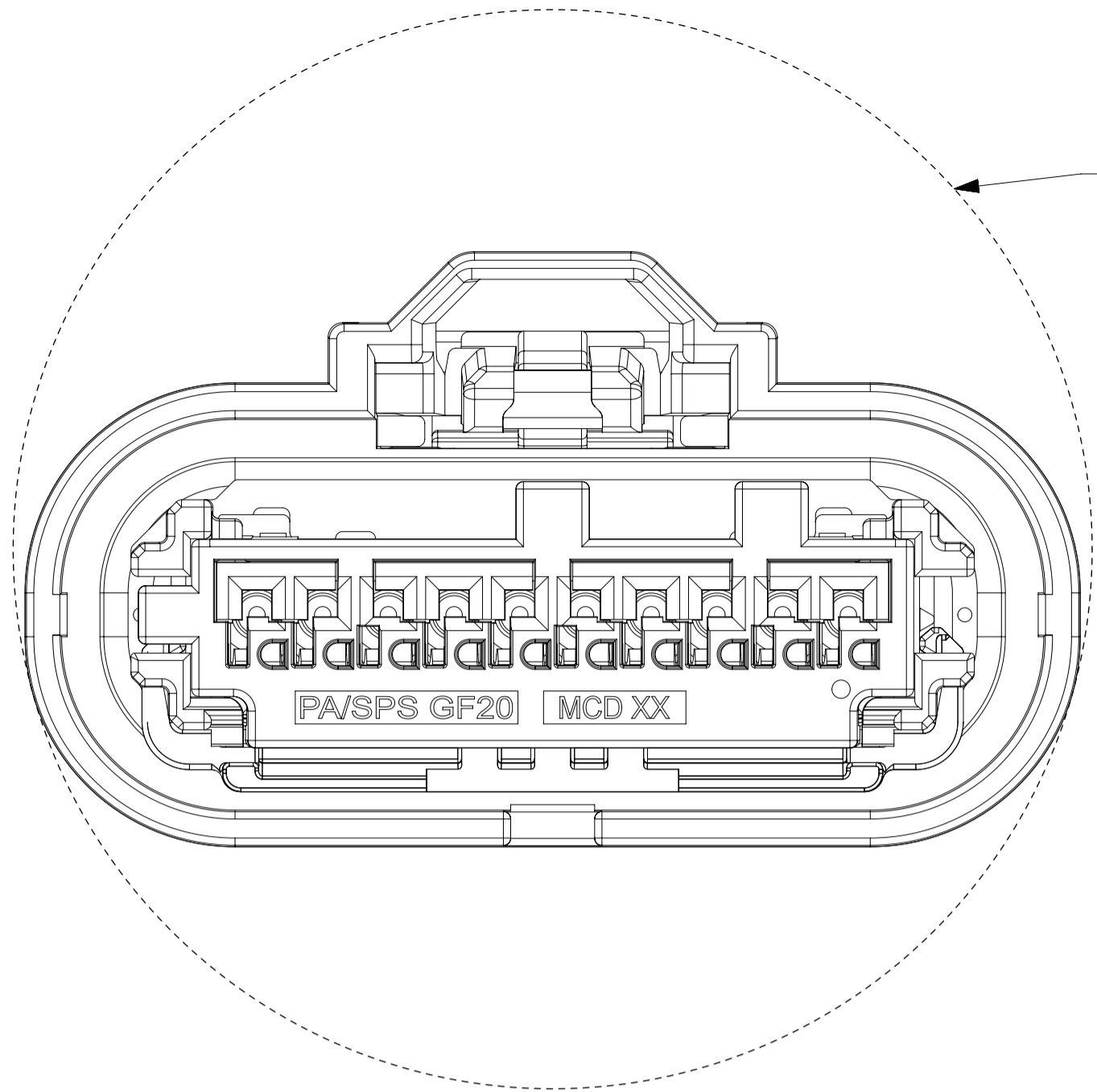
KEY D

THIS DRAWING CONTAINS INFORMATION THAT IS PROPRIETARY TO MOLEX ELECTRONIC TECHNOLOGIES, LLC AND SHOULD NOT BE USED WITHOUT WRITTEN PERMISSION

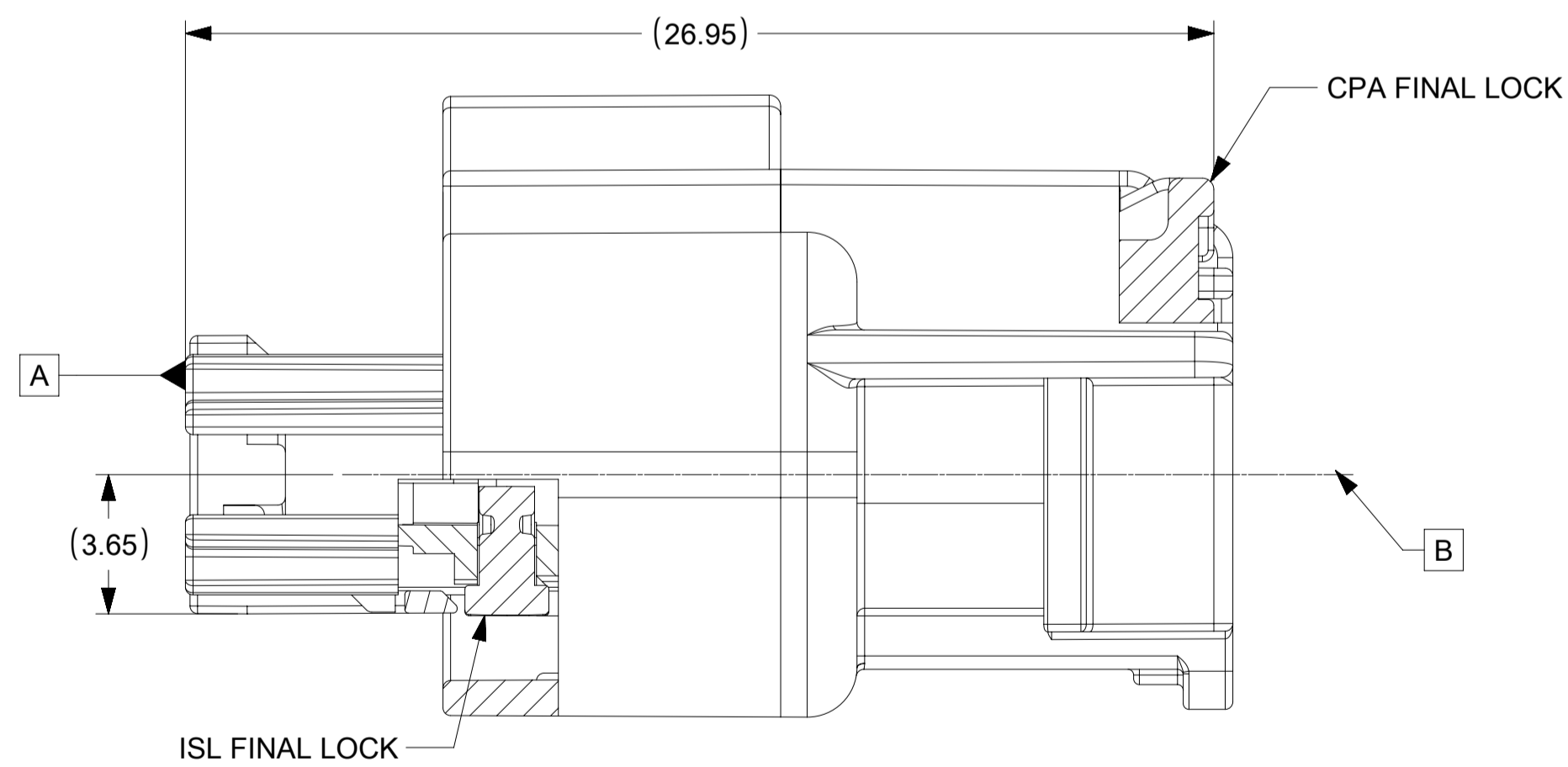
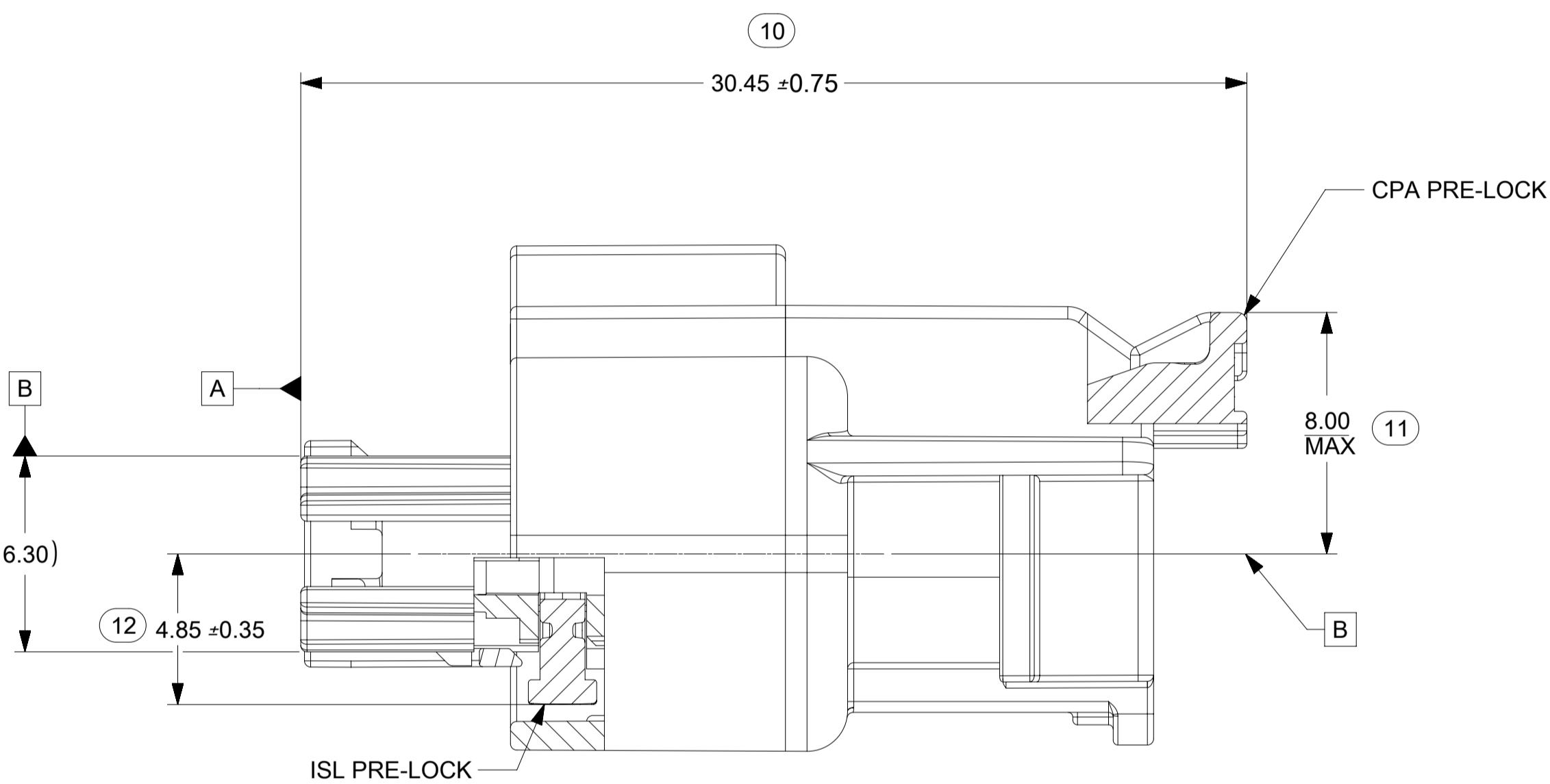
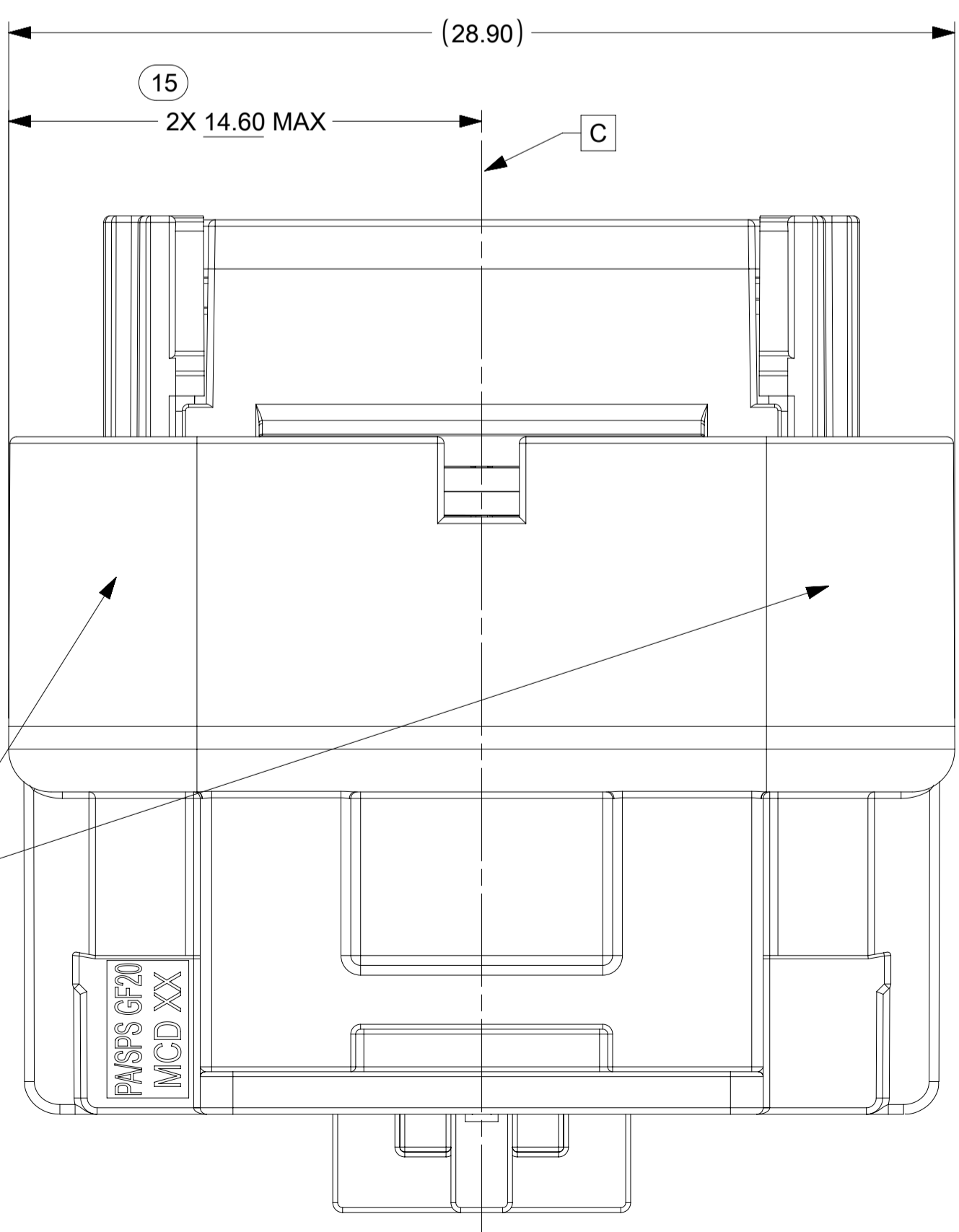
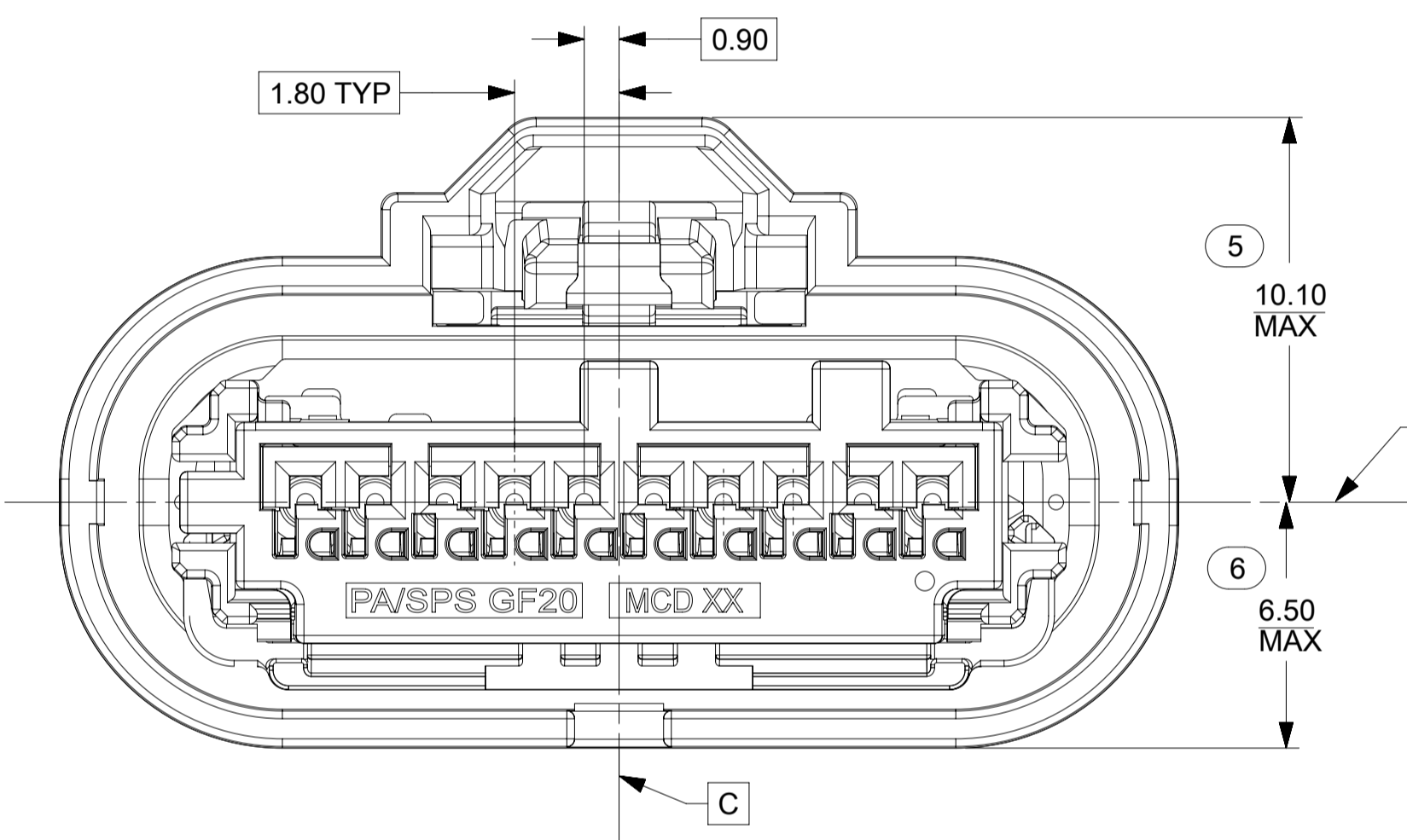
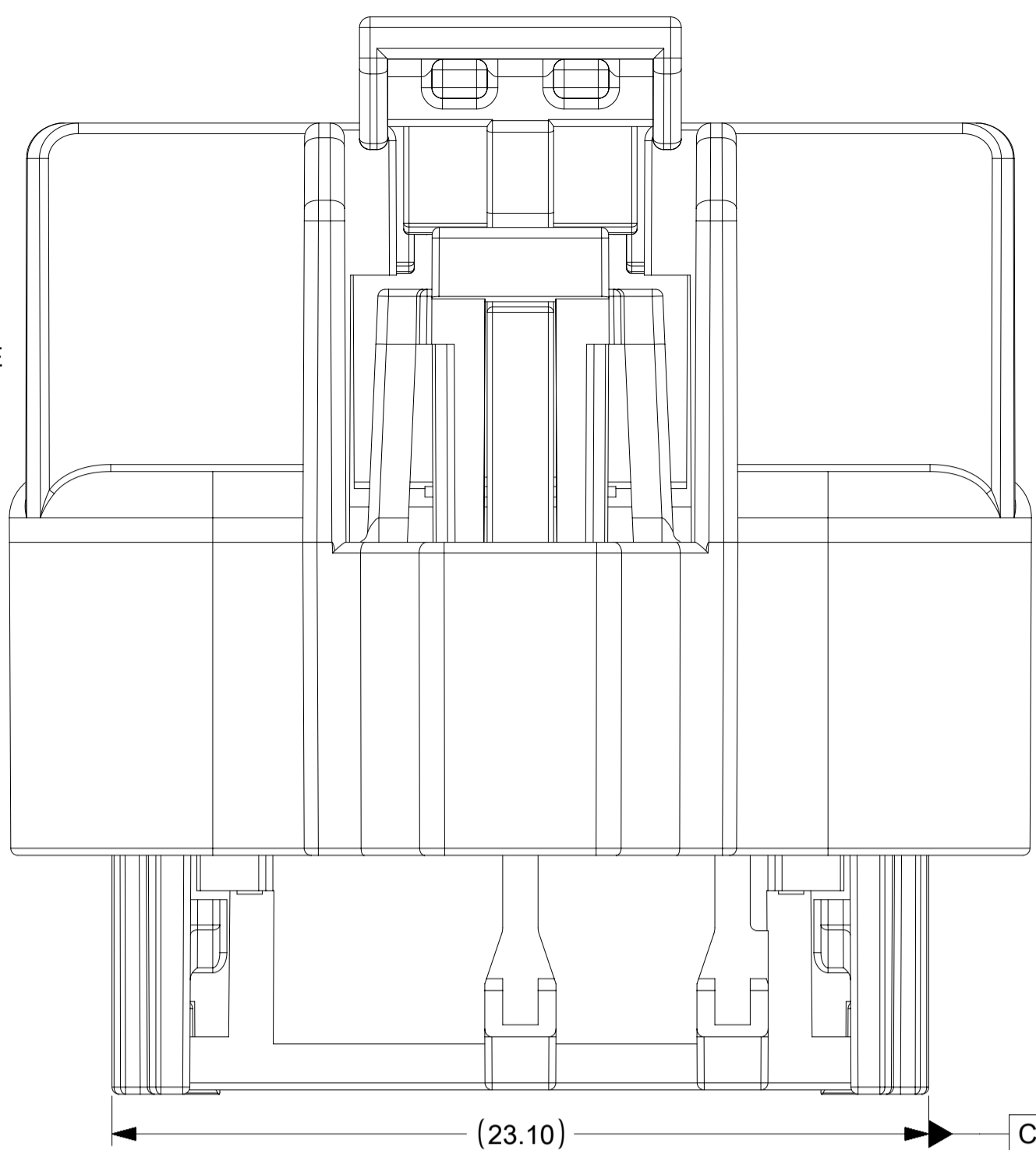
| | | | | | | | | | | | |
|-----------------------------|--|---------------------------------------|------------------------|------------------------------|---------------------------|------------|-----|----------|-----|--------------|--------|
| ADDED PART NUMBER 609707 | 2018/12/27 | GENERAL TOLERANCES (UNLESS SPECIFIED) | DIMENSION UNITS | SCALE | molex [®] | | | | | | |
| | 2018/12/28 | | mm | 1:1 | | | | | | | |
| | 2019/01/02 | | ANGULAR TOL ± 0.3 ° | DRWN BY | | DATE | | | | | |
| | | | 4 PLACES ± | MNS02 | | 2016/04/26 | | | | | |
| | | | 3 PLACES ± | CHK'D BY | | DATE | | | | | |
| | 2 PLACES ± 0.1 | APPR BY | DATE | MINI50 SEALED 1X10 RCPT ASSY | | | | | | | |
| | 1 PLACE ± 0.2 | KDEKOSKI | 2016/05/19 | | | | | | | | |
| | 0 PLACES ± | DRAWING SIZE | THIRD ANGLE PROJECTION | | | | | | | | |
| | DRAFT WHERE APPLICABLE MUST REMAIN WITHIN DIMENSIONS | A1 | | | | | | | | | |
| | | | | | | | | | | | |
| EC NO: 609707 | DRWN: JURUTTER | CHKD: JURUTTER | REV: APPR: JCONDON | SERIES | MATERIAL NUMBER | CUSTOMER | | | | | |
| | | | | 34967 | | | | | | | |
| RELEASE STATUS | P1 | RELEASE DATE | 2019/01/02 17:11:02 | DOCUMENT NUMBER | 349671000 | DOC TYPE | PSD | DOC PART | 000 | SHEET NUMBER | 2 OF 3 |

SHEET DESCRIPTION

RECEPTACLE CONNECTOR ASSEMBLY



①
Ø29.44
MIN PASS-THRU
WITH NO CLEARANCE



THIS DRAWING CONTAINS INFORMATION THAT IS PROPRIETARY TO MOLEX ELECTRONIC TECHNOLOGIES, LLC AND SHOULD NOT BE USED WITHOUT WRITTEN PERMISSION

| | | | | | | | | |
|---|--------------|---|-----------------|-------|-----------------|-----------------|------------|--------------|
| ADDED PART NUMBER EC NO: 609707 DRWN: JRUTTER CHKD: JRUTTER REV APPR: JCONDON | 2018/12/27 | GENERAL TOLERANCES (UNLESS SPECIFIED) ANGULAR TOL ± 0.3 ° 4 PLACES ± 3 PLACES ± 2 PLACES ± 0.1 1 PLACE ± 0.2 0 PLACES ± DRAFT WHERE APPLICABLE MUST REMAIN WITHIN DIMENSIONS | DIMENSION UNITS | SCALE | | | | |
| | 2018/12/28 | | mm | 1:1 | | | | |
| | 2019/01/02 | | DRWN BY | DATE | | MNS02 | 2016/04/26 | |
| | | | CHK'D BY | DATE | | | | |
| | | | APPR BY | DATE | | KDEKOSKI | 2016/05/19 | |
| | DRAWING SIZE | THIRD ANGLE PROJECTION | A1 | | SERIES | MATERIAL NUMBER | CUSTOMER | |
| | | | | | 34967 | SEE CHART | | |
| | | | | | DOCUMENT NUMBER | DOC TYPE | DOC PART | SHEET NUMBER |
| | | | | | 349671000 | PSD | 000 | 3 OF 3 |

molex

MINI50 SEALED 1X10 RCPT ASSY

PRODUCT CUSTOMER DRAWING

SERIES MATERIAL NUMBER CUSTOMER

34967 SEE CHART

DOCUMENT NUMBER DOC TYPE DOC PART SHEET NUMBER

349671000 PSD 000 3 OF 3

| TABLE OF CONTENTS | |
|-------------------|------------------------------|
| SHEET NO. | SHEET DESCRIPTION |
| 1 | INTERFACE NOTES AND BOM |
| 2 | INTERFACE KEY CONFIGURATIONS |
| 3 | INTERFACE DEFINITION |
| 4 | INTERFACE DATUM TARGETS |

| MATING INTERFACE CHART | | | |
|-------------------------|------------|--------------|-----|
| DESCRIPTION | COLOR | MODEL NUMBER | KEY |
| 1X10, KEY A, BLACK | BLACK | 349681801 | A |
| 1X10, KEY B, LIGHT GRAY | LIGHT GRAY | 349681802 | B |
| 1X10, KEY C, DARK GRAY | DARK GRAY | 349681803 | C |
| 1X10, KEY D, STONE GRAY | STONE GRAY | 349681804 | D |

NOTES: VALID UNLESS OTHERWISE SPECIFIED

1. GENERAL:

REFER TO "SAE/USCAR 12 CONNECTOR GUIDELINES" AND "SAE/USCAR 2 PERFORMANCE SPECIFICATION FOR AUTOMOTIVE ELECTRICAL CONNECTOR SYSTEMS" FOR ADDITIONAL REQUIREMENTS.

2. DESIGN - MATERIALS:

- a. HOUSING: SPS/NYLON 20% GLASS FILLED OR EQUIVALENT
FLAMMABILITY REQUIREMENT: PER ISO3795 OR GM3191
 - 1. BURN RATE 100mm/MIN MAXIMUM
 - 2. MATERIAL MUST BE SELF EXTINGUISHING
- b. BLADE TERMINAL: SEE MOLEX SALES DRAWING 347350050. FOR MATERIAL, DIMENSIONAL, PLATING AND COATING REQUIREMENTS AND ANY BLADE TERMINAL DESIGN INFORMATION NOT SHOWN ON REFERENCED OR THIS DRAWING SEE EWCAP DWG NO. EWCAP-001.
 - 1. TIN PLATING: 2.5-4.0 MICROMETERS MATTE TIN OVER 1.25-2.25 MICROMETERS DUCTILE SULFAMATE NICKEL
 - 2. SILVER PLATING: 1.9-3.3 MICROMETERS SILVER OVER 1.0-1.8 MICROMETERS DUCTILE SULFAMATE NICKEL.
ANTI-TARNISH: SYNTHETIC HYDROCARBON CONTACT SURFACE FINISH OR EQUIVALENT APPLIED WITHOUT VOID TO CONTACT AREA

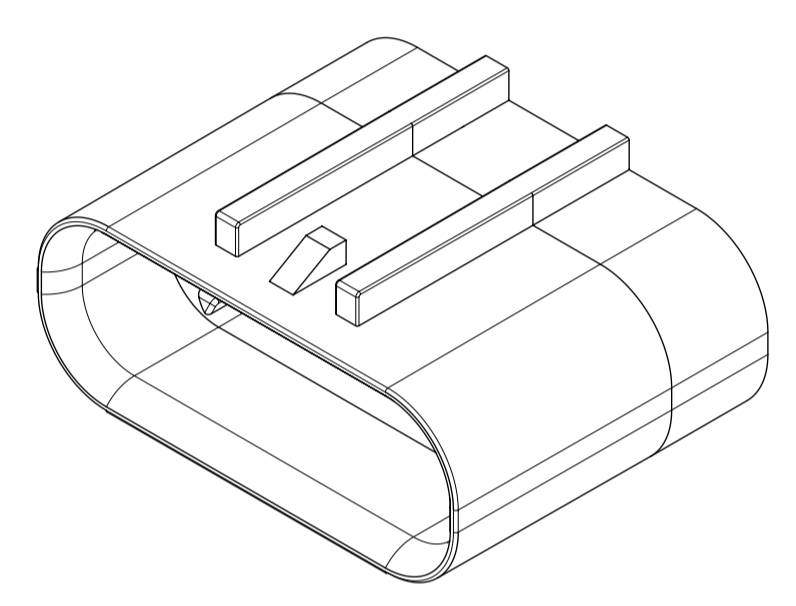
c. STANDARD COLORS FOR KEYING (SEE CHART). DEVIATION REQUIRES APPROVAL OF AUTHORIZED PERSON.

3. DESIGN - GEOMETRY:

- a. THE 3-D CAD DATA IS BASIC (WITHOUT TOLERANCE) AND THE MASTER FOR THIS PART WITH THE EXCEPTION OF UNDERLINED DIMENSIONS. DIMENSIONAL INFORMATION NOT SHOWN IN THIS DRAWING IS DEFINED BY THE DATA FILE AT ITS LATEST REVISION.
- b. PRODUCT DESIGN MODEL NUMBER(S): SEE MATING INTERFACE CHART
- c. GEOMETRIC DIMENSIONS AND TOLERANCES PER ASME Y14.5M - 2009
- d. GENERAL TOLERANCES: SEE TITLE BLOCK
- e. EDGES AND UNDIMENSIONED DETAILS PER ISO13715
- f. CORNERS SHOWN AS SHARP TO BE R 0.2 MAX.
- g. LETTERING SHALL BE 0.15 MAX RAISED IN 0.25 MAX RECESS PAD.
THIS INCLUDES RECYCLING CODE, CAVITY ID, VENDOR IDENTIFICATION, AND CUSTOMER MATERIAL NUMBER.
(FOR SMALL PARTS: LETTERING SHALL BE 0.10 MAX RAISED IN 0.15 MAX RECESS PAD)

4. DESIGN - MANUFACTURING:

- a. ALLOWABLE FLASH MAX 0.20 HIGH BY MAX 0.13 THICK.
- b. ALLOWABLE SPLIT/PARTING LINE MISMATCH 0.2 MAX.
- c. EJECTOR PIN MARKS TO BE FLUSH TO 0.25 MAX DEPRESSED. LOCATION MUST BE APPROVED BY PRODUCT ENGINEERING. EJECTOR PIN MARKS NOT PERMISSIBLE ON OR NEAR DATUM TARGET AREA.
- d. ALLOWABLE GATE VESTIGE FLUSH TO 0.25 MAX RECESS. LOCATION MUST BE APPROVED BY PRODUCT ENGINEERING.
- e. NO EXTERNAL MOLD RELEASE AGENT ALLOWED DURING MANUFACTURING.
- f. NO PARTING LINES, MISMATCHES OR EJECTOR MARKS PERMISSIBLE WITHIN THE INDICATED SURFACE. TOOLING FOR INDICATED SURFACE MUST BE PROCESSED TO A SURFACE FINISH OF NTMA #70 (400 PAPER)
- g. BLADE TERMINAL ENVIRONMENTAL BARRIER (USED WITH SILVER PLATED TERMINALS) SHALL NOT BE PRESENT ON ANY SURFACE OTHER THAN THE BLADE TERMINALS
- h. NO PARTING LINES, FLASH, MISMATCHES OR EJECTOR MARKS PERMISSIBLE ON THE INDICATED NOSE SURFACE OR TRANSITION TO INTERNAL SHROUD SURFACE.



1X10

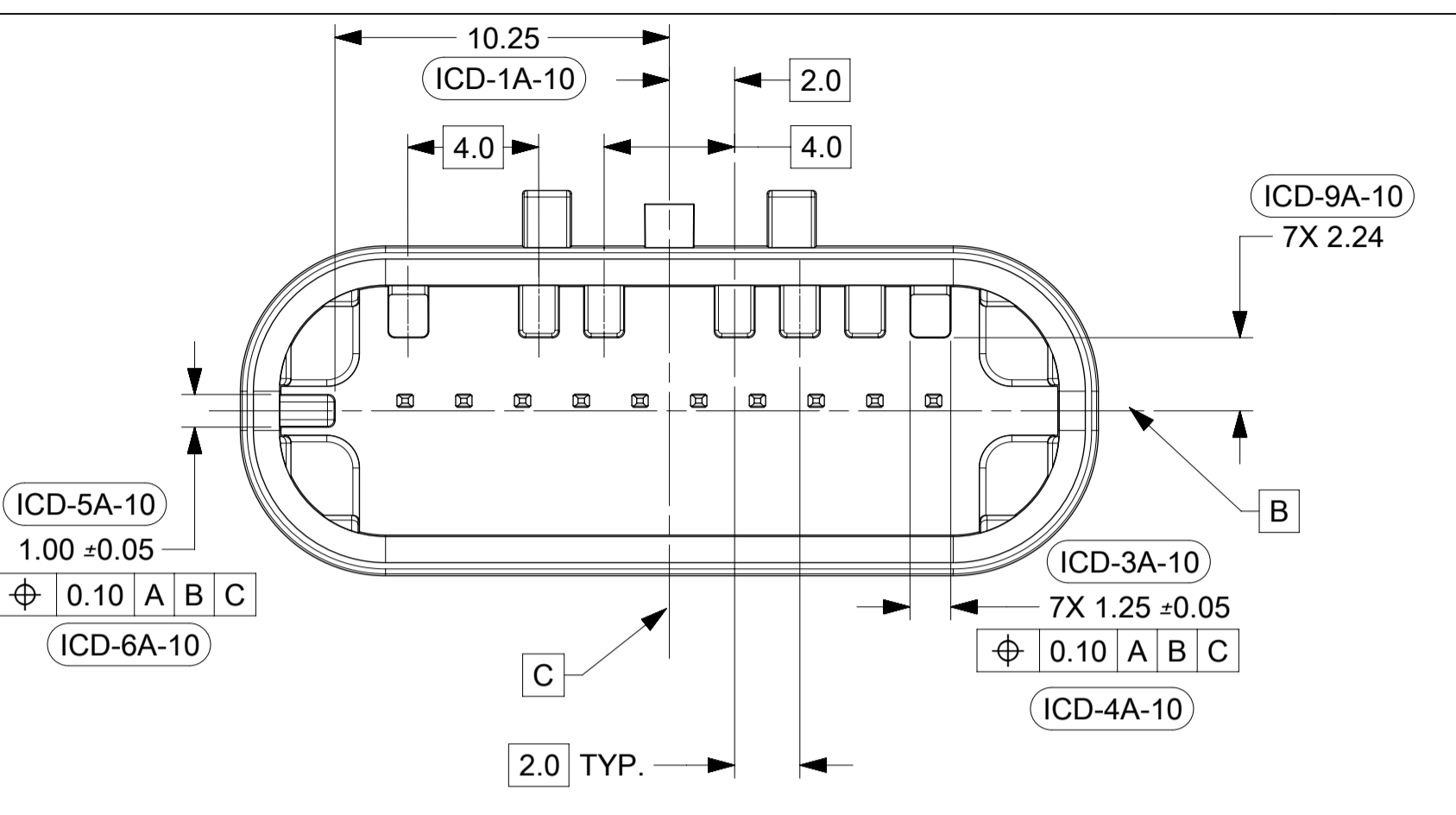
NOTICE:
PRODUCT IN DEVELOPMENT & SUBJECT
TO CHANGE WITHOUT NOTIFICATION

| | |
|-----|---|
| D | CHANGED RIB REMOVAL FOR KEYING: SEE VIEWS SHEET 2. ADDED SEE NOTE 2 TO PIN DETAIL SHEET 3. REVISED NOTE 4f. |
| C1 | REVISED NOTES AND DIMENSIONS |
| C | RELEASE |
| REV | REV DESCRIPTION |

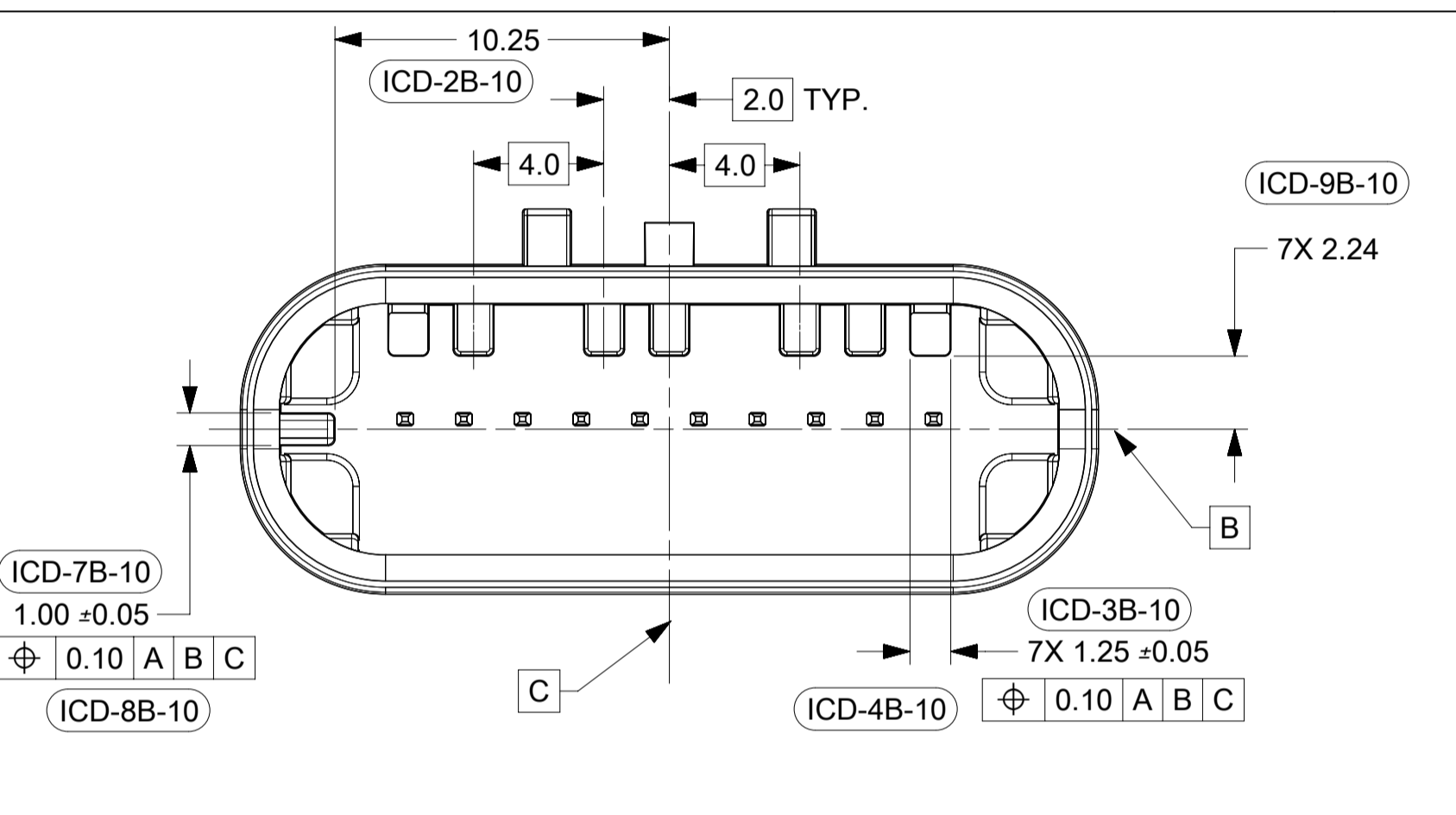
| INSPECTION NUMBER LOG | |
|-----------------------|-------------------------|
| LAST NUMBER: | ICD-31 |
| ADDED: | ICD-21A, ICD-21B |
| REMOVED: | ICD-20,23,24,25, 29, 31 |

| | | | | | |
|--|---|---------------------------------------|--|--|--|
| QUALITY SYMBOLS FA = 0 FE = 0 FE = 0 ▼ = 0 C = 0 ☒ = 0 ■ = 0 ∇ = 0 | THIS DRAWING CONTAINS INFORMATION THAT IS PROPRIETARY TO MOLEX ELECTRONIC TECHNOLOGIES, LLC AND SHOULD NOT BE USED WITHOUT WRITTEN PERMISSION | | | | |
| | EC NO: 121633 DRWN: JURUTTER CHKD: REV APPR: JCONDON | 2017/04/03 2017/09/15 | GENERAL TOLERANCES (UNLESS SPECIFIED) DIMENSION UNITS: mm SCALE: 1:1 DRWN BY: MNS02 DATE: 2016/04/21 CHK'D BY: DATE: | | |
| | 4 PLACES ± 3 PLACES ± 2 PLACES ± 0.1 1 PLACE ± 0.2 0 PLACES ± | APPR BY: KDEKOSKI DATE: 2016/05/04 | MINI50 SEALED 1X10 INTERFACE PRODUCT CUSTOMER DRAWING | | |
| | DRAFT WHERE APPLICABLE MUST REMAIN WITHIN DIMENSIONS A1 | | SERIES: 34968 MATERIAL NUMBER: SEE CHART CUSTOMER: | DOCUMENT NUMBER: 349681800 DOC TYPE: PSD DOC PART: 000 SHEET NUMBER: 1 OF 4 | |

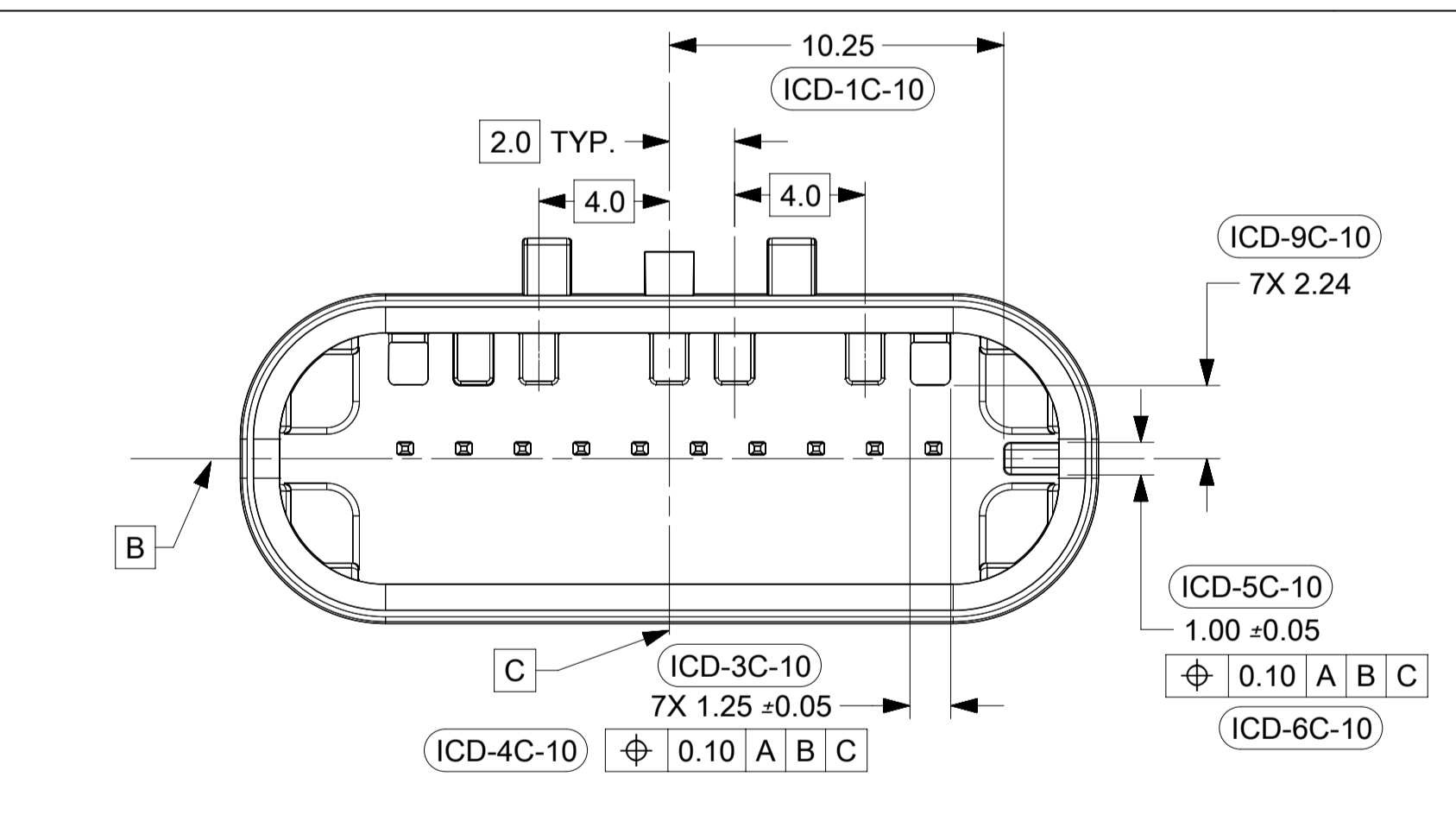
SHEET DESCRIPTION
KEY CONFIGURATIONS



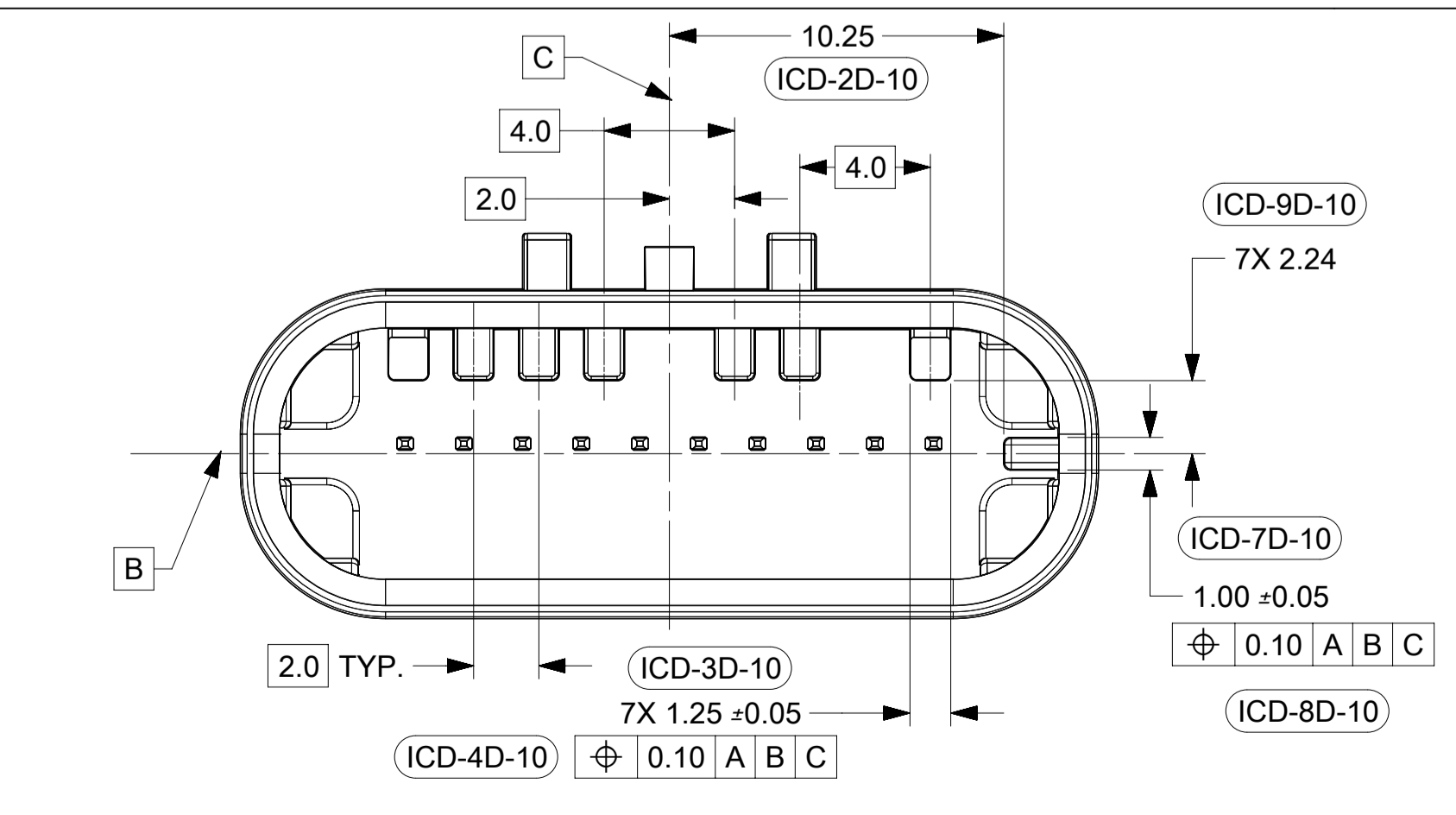
KEY OPTION A



KEY OPTION B



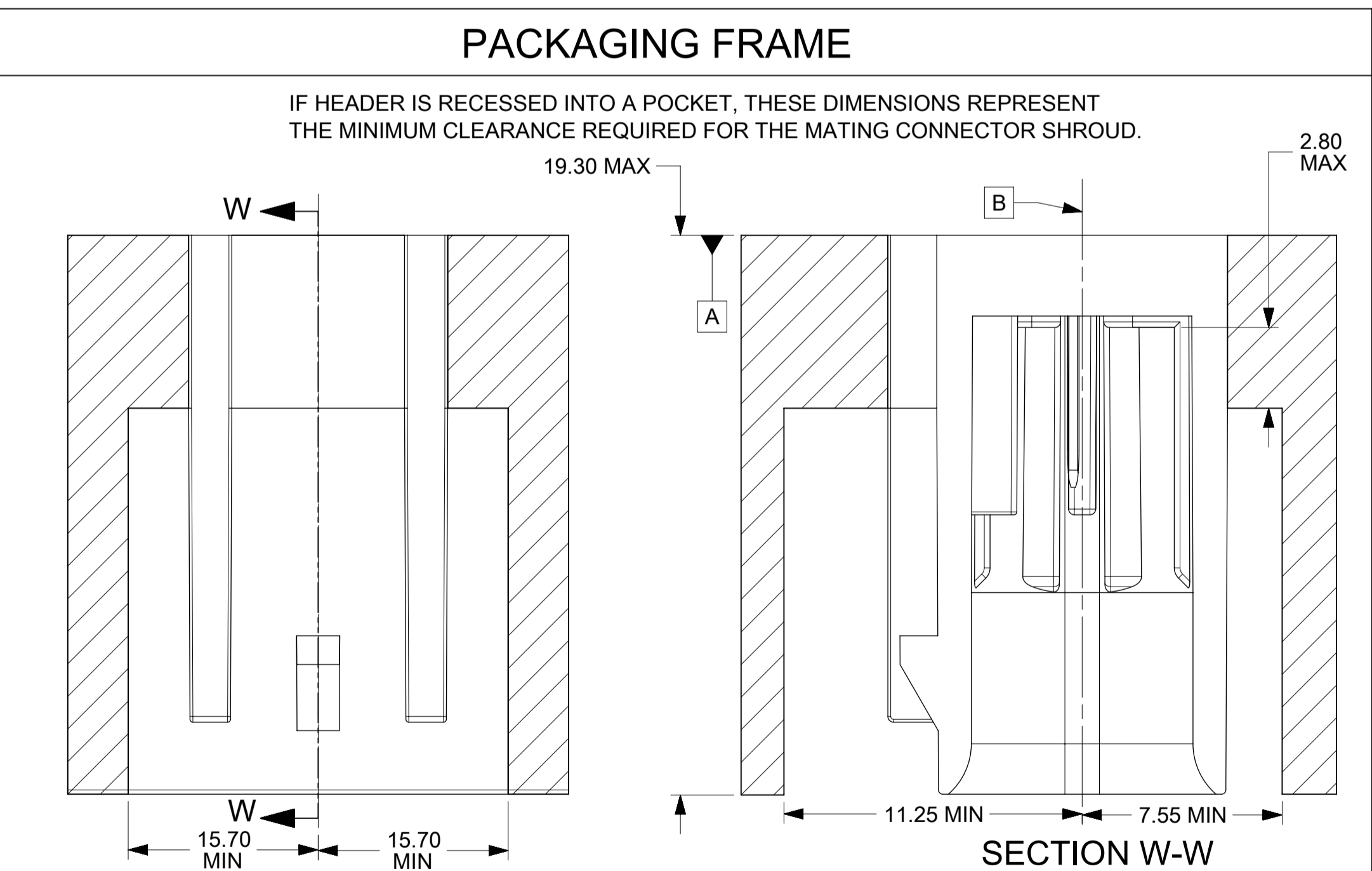
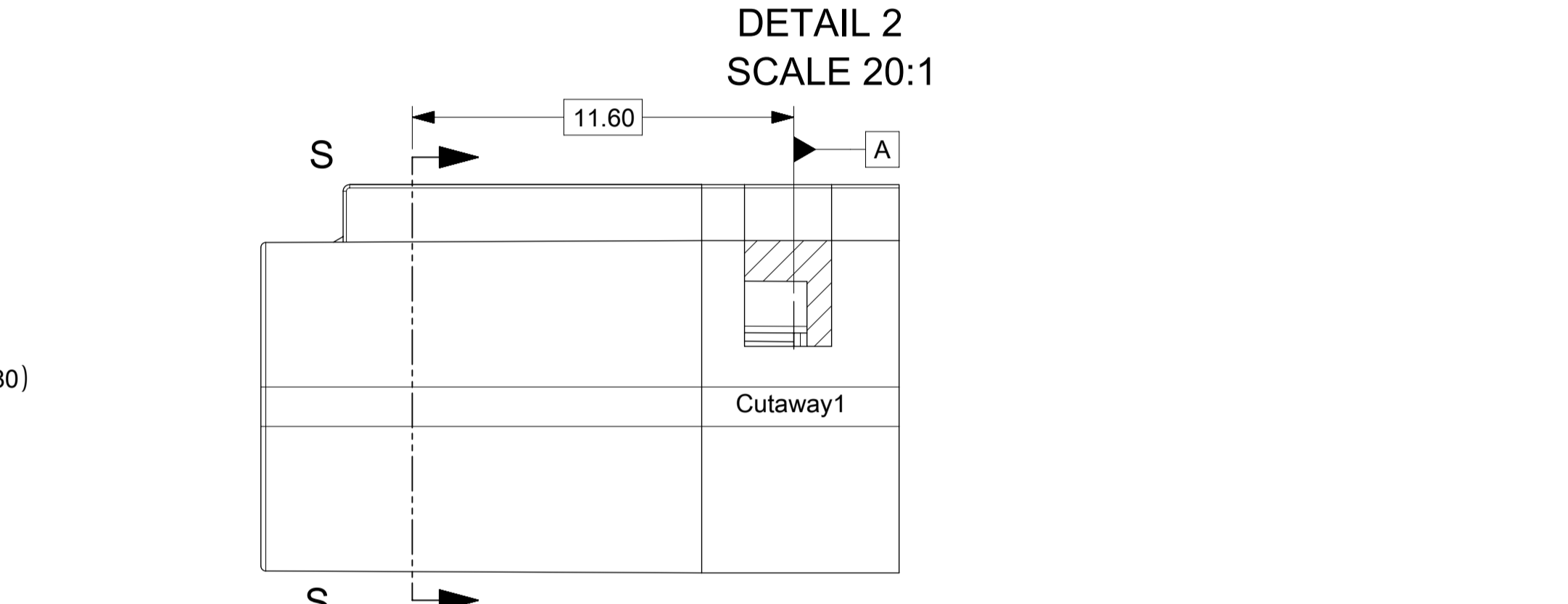
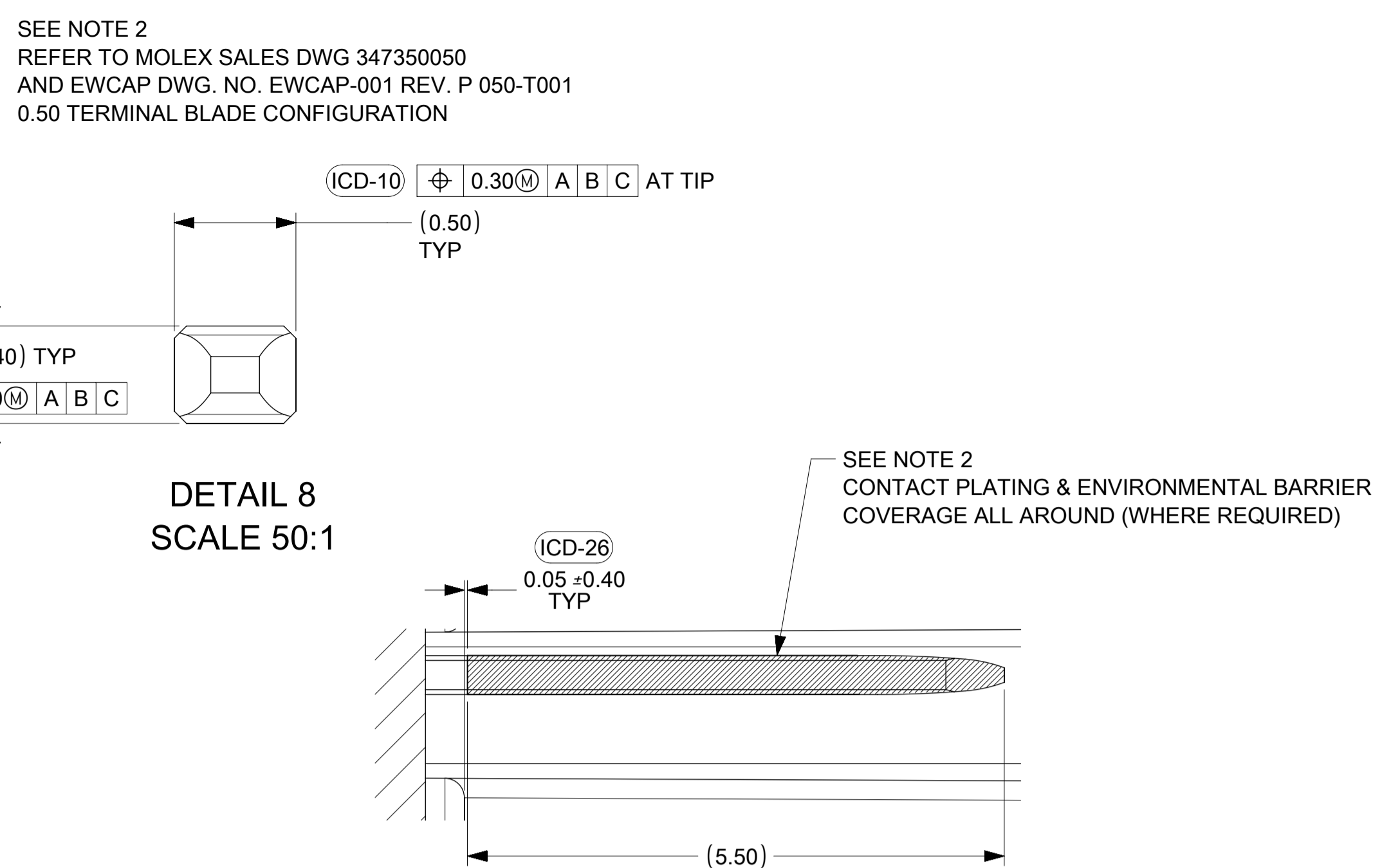
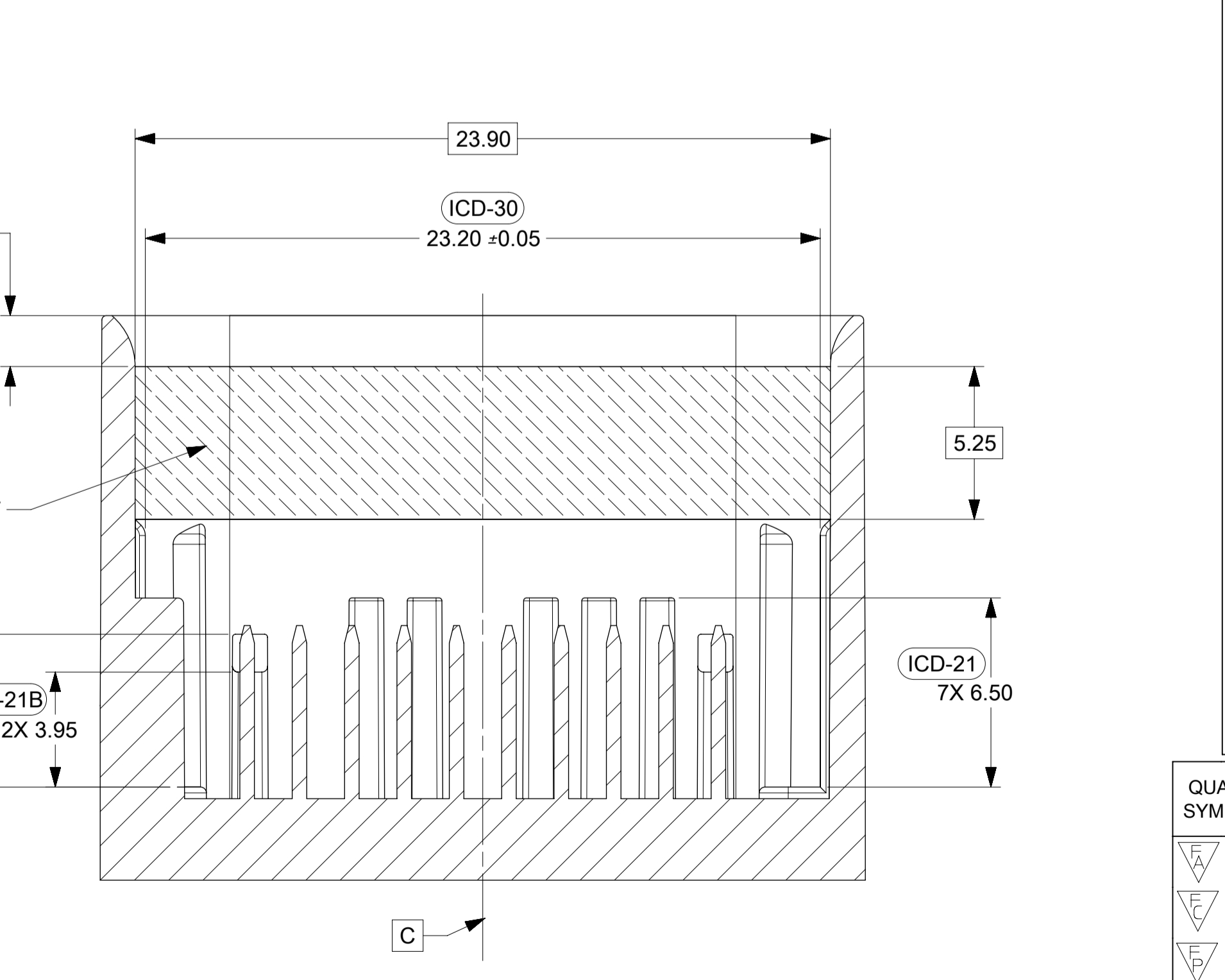
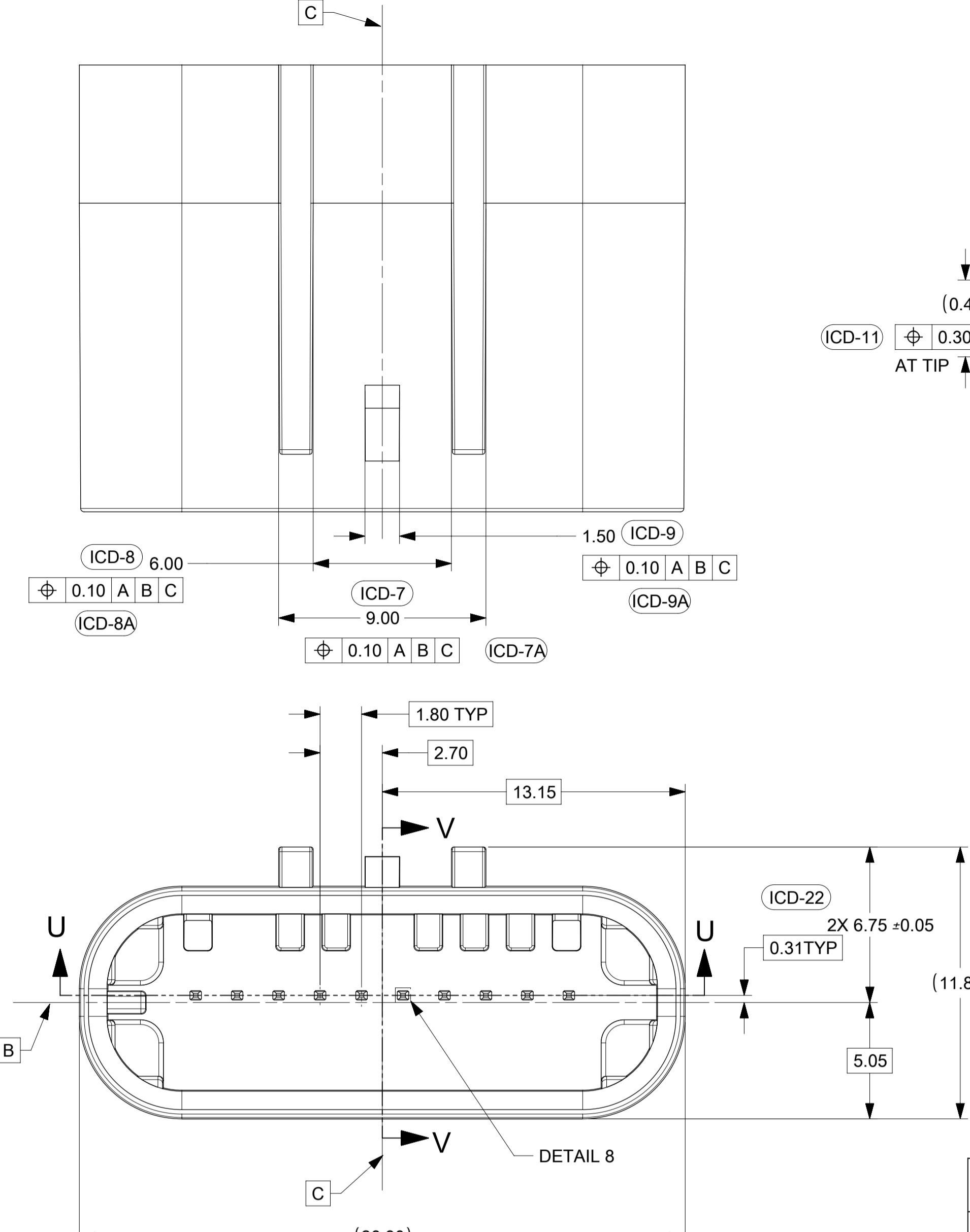
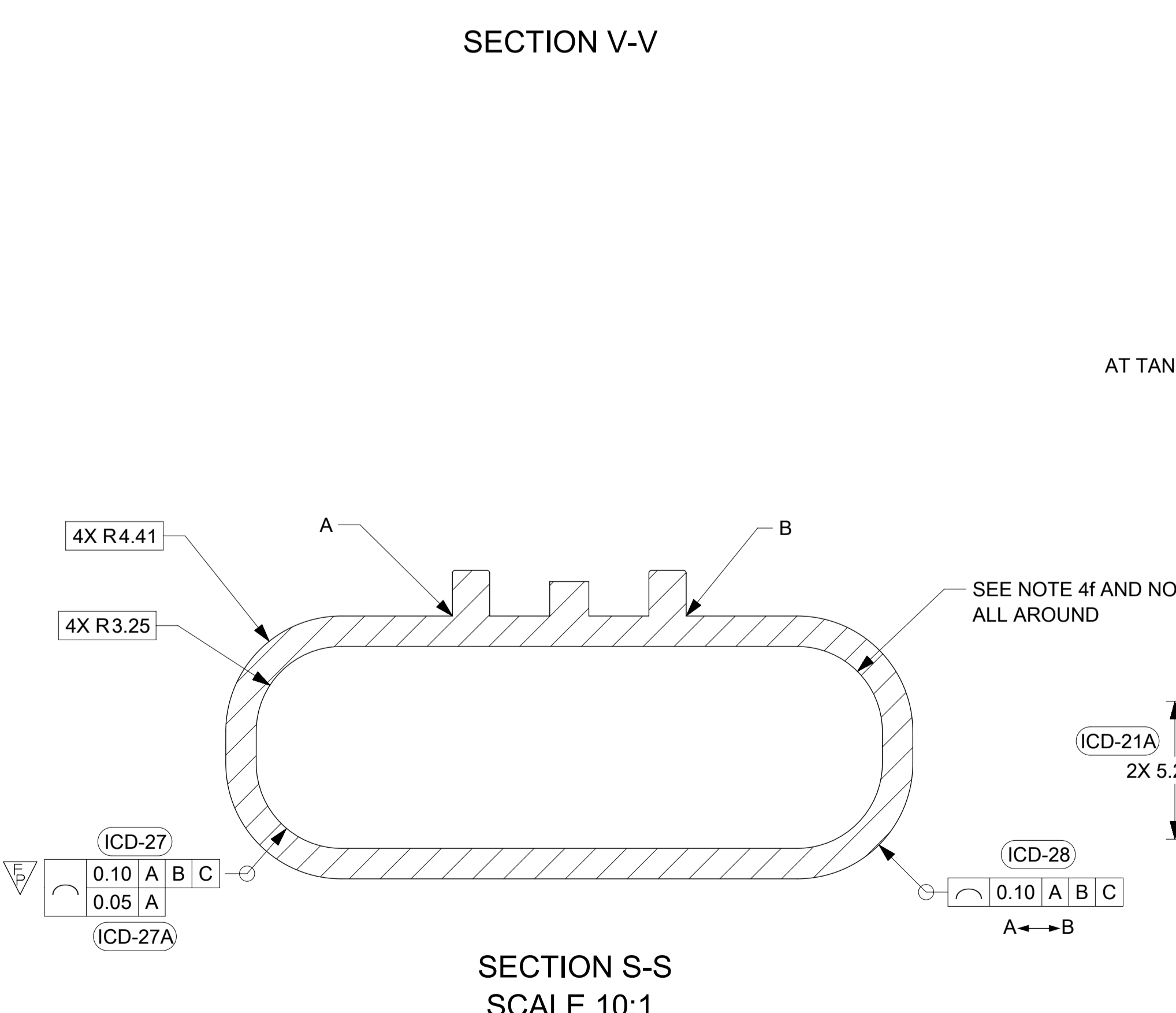
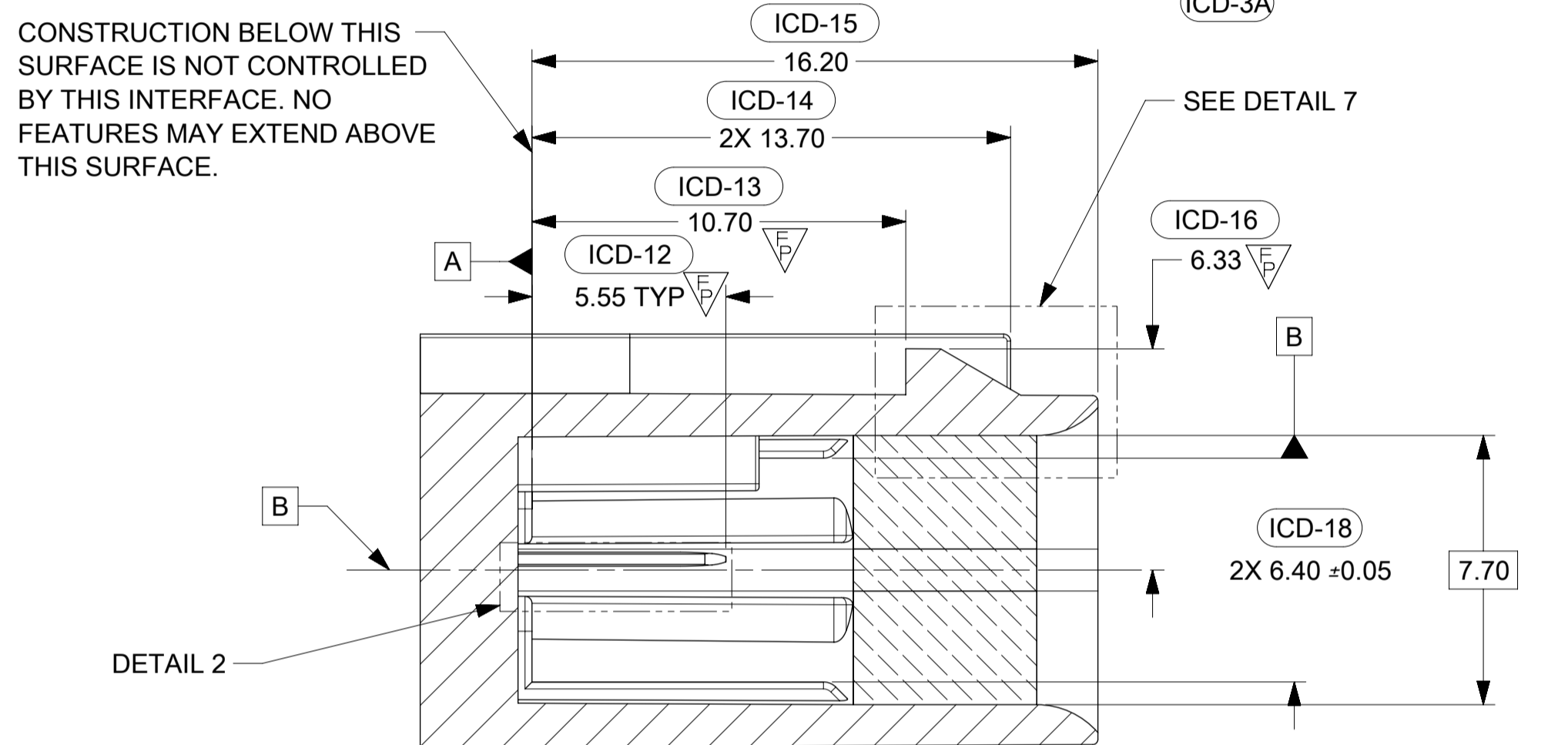
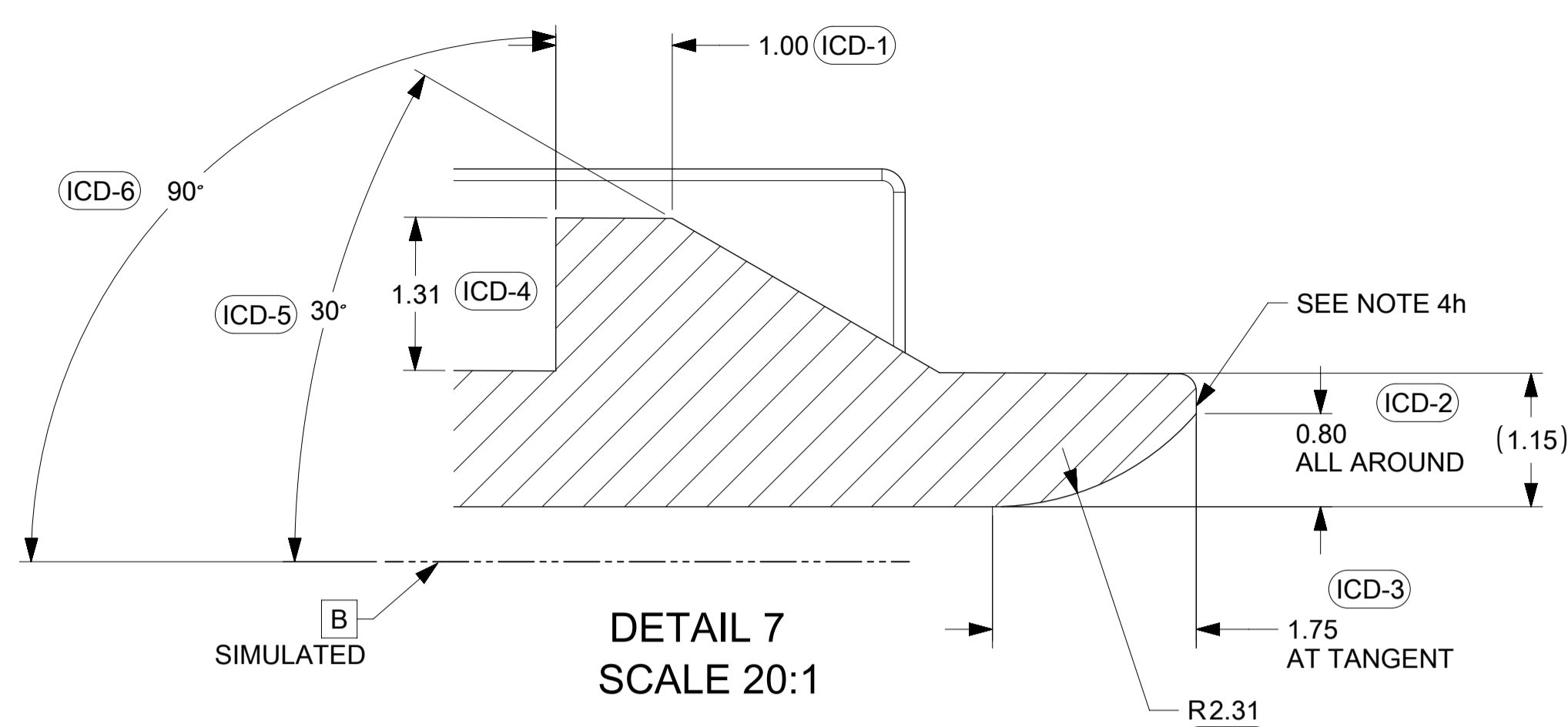
KEY OPTION C



KEY OPTION D

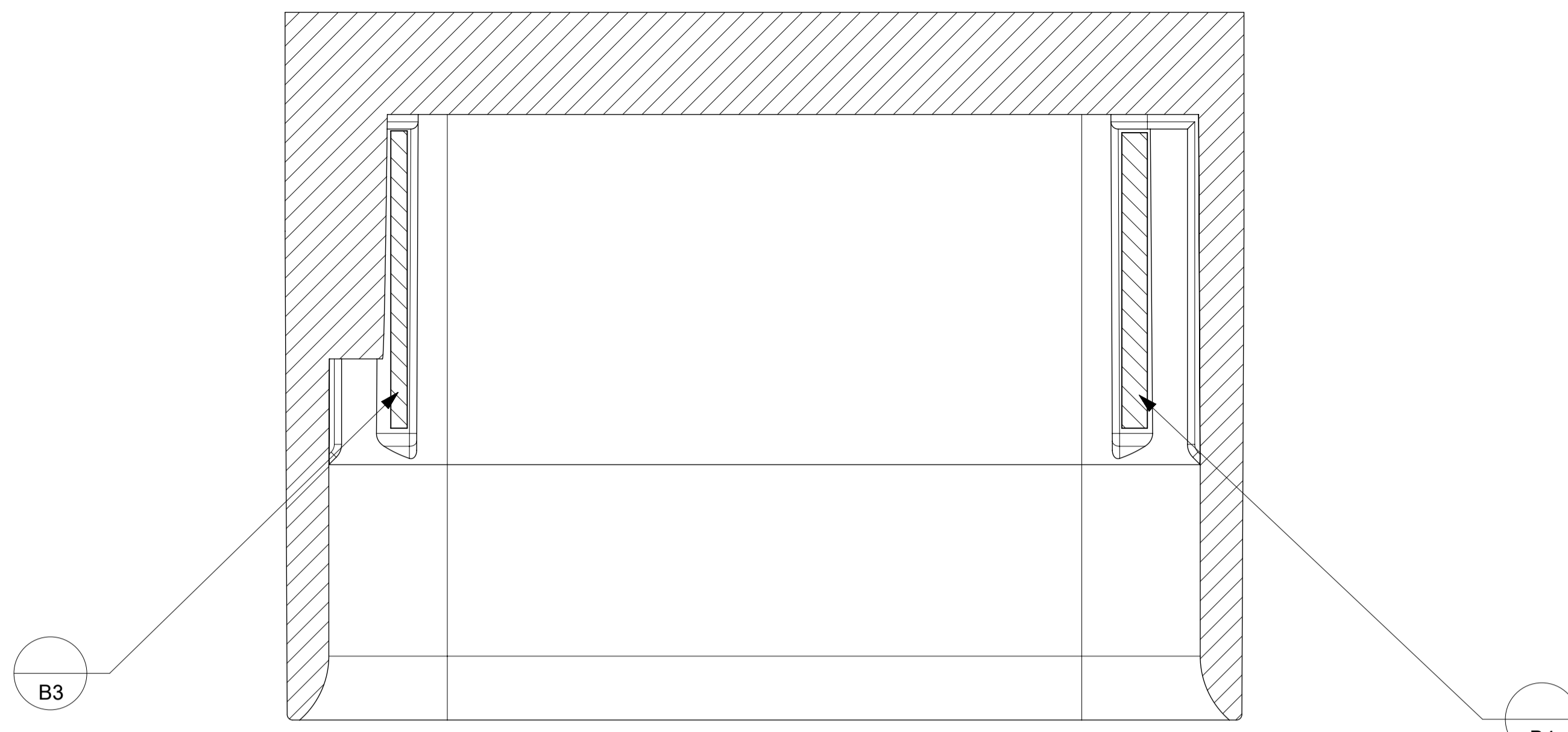
| | | | | | | | | | | |
|---|---|------------|--|--------------|-----------------|---------------------------|-------------------------------------|---------------------------------|---------------------|----------|
| THIS DRAWING CONTAINS INFORMATION THAT IS PROPRIETARY TO MOLEX ELECTRONIC TECHNOLOGIES, LLC AND SHOULD NOT BE USED WITHOUT WRITTEN PERMISSION | | | | | | | | | | |
| QUALITY SYMBOLS | 2017/04/03 | 2017/09/15 | GENERAL TOLERANCES (UNLESS SPECIFIED) | | DIMENSION UNITS | SCALE | | | | |
| | | | ANGULAR TOL ± 3.0 ° | | mm | 1:1 | | | | |
| ▽ = 0 | EC NO: 121633 DRWN: JURUTTER CHKD: REV / APPR: JCONDON | D | 4 PLACES ± | MNS02 | DATE | | mini50 SEALED 1X10 INTERFACE | | | |
| ▽ = 0 | | | 3 PLACES ± | CHK'D BY | DATE | | | | | |
| ▽ = 0 | | | 2 PLACES ± 0.1 | APPR BY | | DATE | | PRODUCT CUSTOMER DRAWING | | |
| ▽ = 0 | | | 1 PLACE ± 0.2 | KDEKOSKI | 2016/05/04 | | | | | |
| ▽ = 0 | | | 0 PLACES ± | DRAWING SIZE | | THIRD ANGLE PROJECTION | | SERIES | MATERIAL NUMBER | CUSTOMER |
| ▽ = 0 | | | DRAFT WHERE APPLICABLE MUST REMAIN WITHIN DIMENSIONS | | A1 | | | 34968 | SEE CHART | |
| ▽ = 0 | RELEASE STATUS P1 | | RELEASE DATE 15.09.2017 | 16:36:07 | | DOCUMENT NUMBER 349681800 | DOC TYPE PSD | DOC PART 000 | SHEET NUMBER 2 OF 4 | |

SHEET DESCRIPTION
CONNECTOR INTERFACE DEFINITION

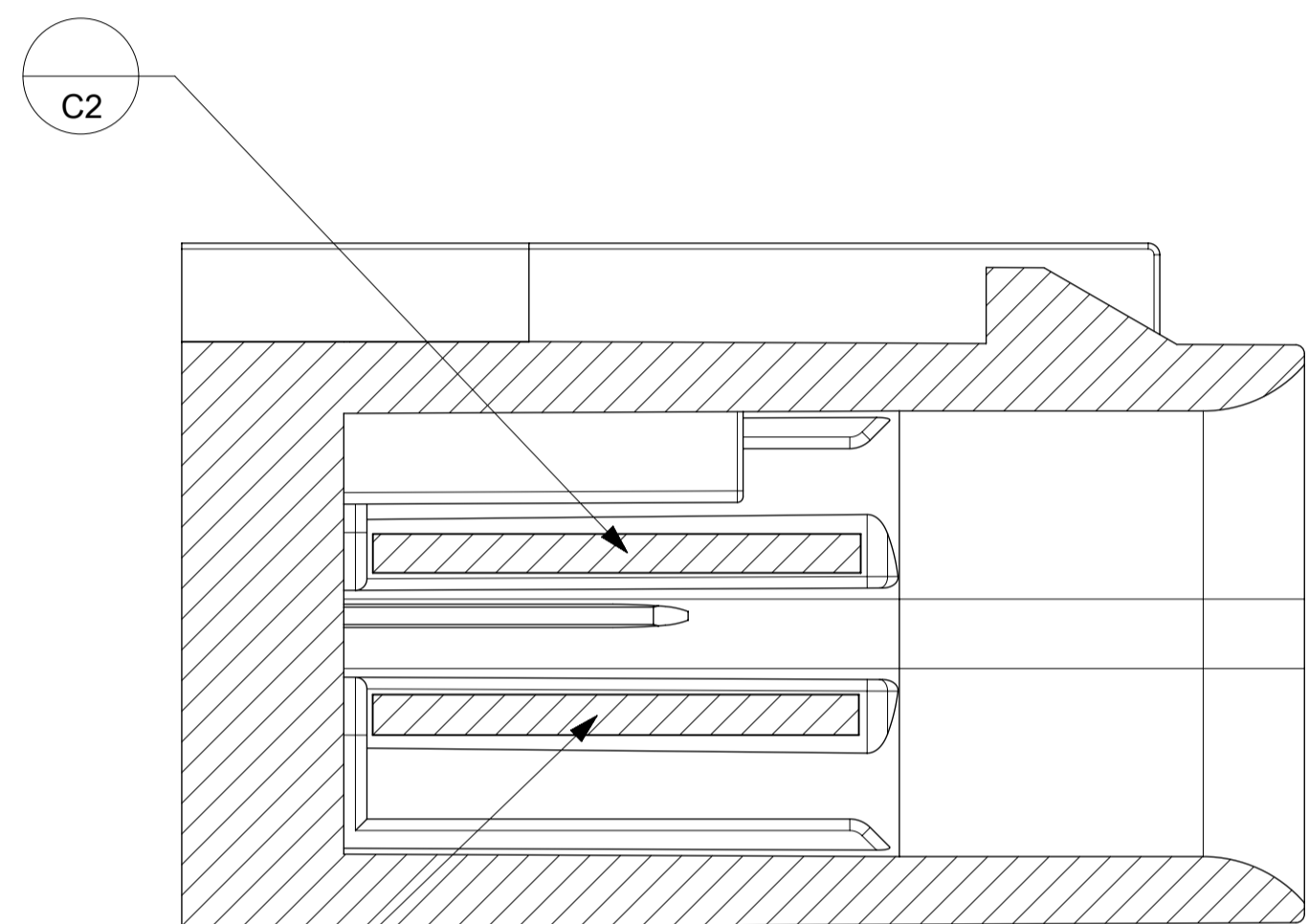


| | | | | | |
|--|--|---|--|--|---|
| <p>IF HEADER IS RECESSED INTO A POCKET, THESE DIMENSIONS REPRESENT THE MINIMUM CLEARANCE REQUIRED FOR THE MATING CONNECTOR SHROUD.</p> | | <p>19.30 MAX</p> | | <p>2.80 MAX</p> | |
| <p>SECTION W-W</p> | | <p>15.70 MIN</p> | | <p>15.70 MIN</p> | |
| <p>11.25 MIN</p> | | <p>7.55 MIN</p> | | <p>SECTION W-W</p> | |
| <p>THIS DRAWING CONTAINS INFORMATION THAT IS PROPRIETARY TO MOLEX ELECTRONIC TECHNOLOGIES, LLC AND SHOULD NOT BE USED WITHOUT WRITTEN PERMISSION</p> | | | | | |
| <p>QUALITY SYMBOLS</p> <p>▽ = 0</p> <p>▽ = 0</p> <p>▽ = 0</p> <p>▽ = 0</p> <p>▽ = 0</p> <p>▽ = 0</p> <p>▽ = 0</p> <p>▽ = 0</p> <p>▽ = 0</p> <p>▽ = 0</p> | <p>EC NO: 121633</p> <p>DRWN: JURUTTER</p> <p>CHKD: JCONDON</p> <p>REV APPR:</p> | <p>2017/04/03</p> <p>2017/09/15</p> | <p>GENERAL TOLERANCES (UNLESS SPECIFIED)</p> <p>ANGULAR TOL ± 3.0 °</p> <p>4 PLACES ±</p> <p>3 PLACES ±</p> <p>2 PLACES ± 0.1</p> <p>1 PLACE ± 0.2</p> <p>0 PLACES ±</p> <p>DRAFT WHERE APPLICABLE MUST REMAIN WITHIN DIMENSIONS</p> | <p>DIMENSION UNITS</p> <p>mm</p> <p>MNS02</p> <p>APPR BY</p> <p>KDEKOSKI</p> <p>DRAWING SIZE</p> <p>A1</p> | <p>SCALE</p> <p>1:1</p> <p>DATE</p> <p>2016/04/21</p> <p>DATE</p> <p>2016/05/04</p> <p>THIRD ANGLE PROJECTION</p> |
| <p>RELEASE STATUS P1</p> | | <p>RELEASE DATE 15.09.2017 16:36:07</p> | | <p>3 OF 4</p> | |

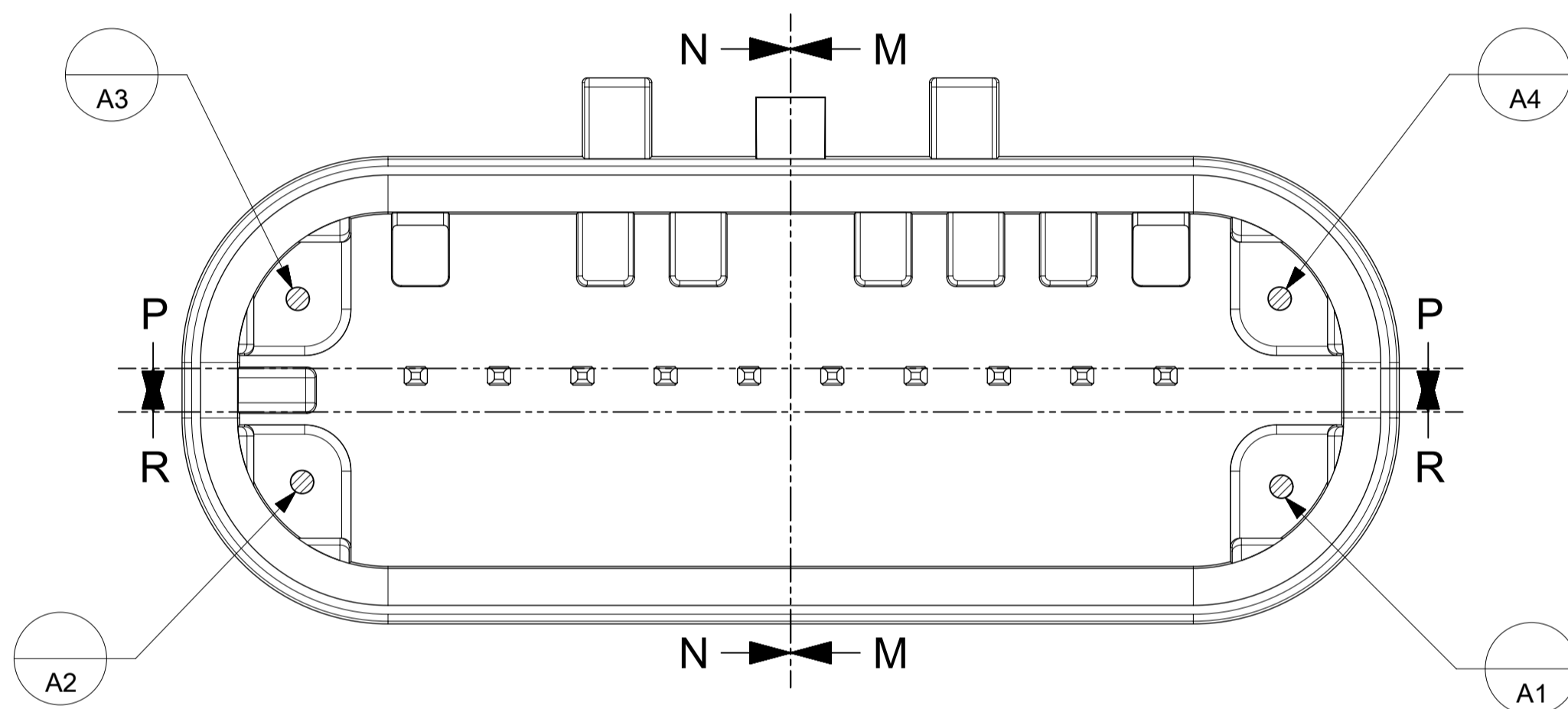
SHEET DESCRIPTION
DATUM TARGETS



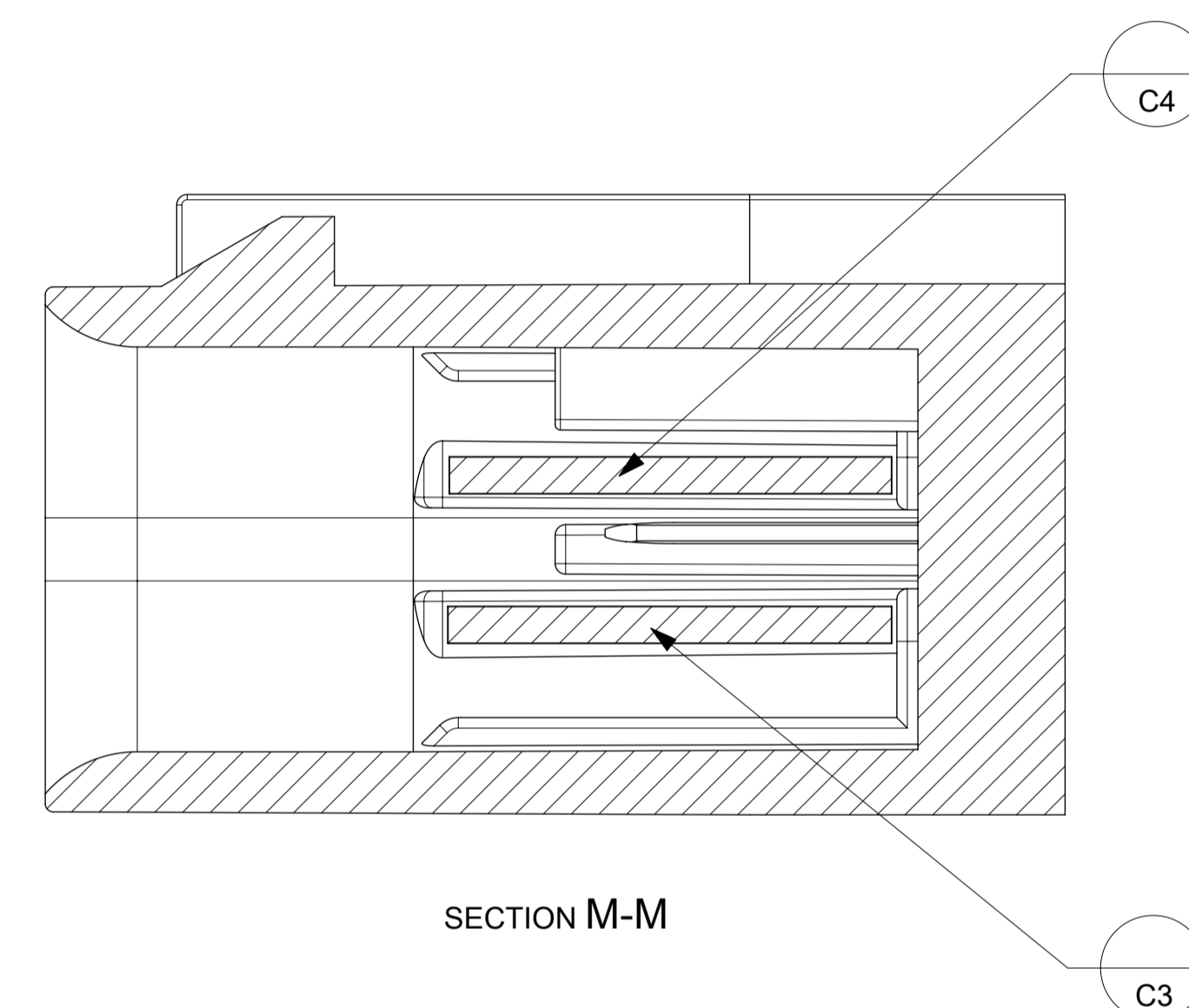
SECTION P-P



SECTION N-N



SECTION M-M



SECTION R-R

| | | | | | | | | | | | | | | | |
|---|--|----------------|------------|------------|--|---------------------------------------|--|--|-------|--------------|--|------------------------|-----------------|----------|--------------|
| THIS DRAWING CONTAINS INFORMATION THAT IS PROPRIETARY TO MOLEX ELECTRONIC TECHNOLOGIES, LLC AND SHOULD NOT BE USED WITHOUT WRITTEN PERMISSION | | | | | | | | | | | | | | | |
| QUALITY SYMBOLS | EC NO: 121633 DRWN: JRUTTER CHKD: APPR: JCONDON | 2017/04/03 | | 2017/09/15 | | GENERAL TOLERANCES (UNLESS SPECIFIED) | | DIMENSION UNITS | SCALE | | | | | | |
| | | | | | | ANGULAR TOL ± 3.0 ° | | mm | 8:1 | | | | | | |
| | | 4 PLACES ± | | MNS02 | | DATE | | 2016/04/21 | | | | | | | |
| | | 3 PLACES ± | | CHK'D BY | | DATE | | 1 PLACE ± 0.1 | | APPR BY | | DATE | | | |
| | | 2 PLACES ± 0.2 | | KDEKOSKI | | 2016/05/04 | | 0 PLACES ± | | DRAWING SIZE | | THIRD ANGLE PROJECTION | | | |
| | | 1 PLACE ± | | A1 | | | | DRAFT WHERE APPLICABLE MUST REMAIN WITHIN DIMENSIONS | | | | | | | |
| 0 PLACES ± | | | | | | | | | | | | | | | |
| RELEASE STATUS | P1 | RELEASE DATE | 15.09.2017 | 16:36:07 | | | | | | | | SERIES | MATERIAL NUMBER | CUSTOMER | |
| | | | | | | | | | | | | 34968 | SEE CHART | | |
| | | | | | | | | | | | | DOCUMENT NUMBER | DOC TYPE | DOC PART | SHEET NUMBER |
| | | | | | | | | | | | | 349681800 | PSD | 000 | 4 OF 4 |