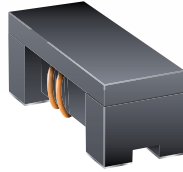


Product Obsolescence Memo

INDUCTIVE COMPONENTS



March, 2016

Bourns® Model SRF2012 Series Common Mode Chip Inductors to be Discontinued

Bourns has decided to discontinue the [Model SRF2012 Series](#) Common Mode Chip Inductors due to a lack of sales volume and diminishing demand. The [Model SRF2012A](#) or [SRF2012AA Series](#) are the suggested replacement series. These series are produced with tighter quality control processes and have lower manufacturing costs.

The form, fit and function of the suggested replacement series, SRF2012A and SRF2012AA, are not identical to the obsolete SRF2012 parts. However, their specifications are likely to be substitutable for typical applications. Please refer to the Bourns data sheets for more information.

Obsolete Part Number	Suggested Replacement Part Number (SRF2012A Series)	Suggested Replacement Part Number (SRF2012AA Series)
SRF2012-121Y	SRF2012-121YA	SRF2012A-121YA
SRF2012-161Y	SRF2012-161YA	SRF2012A-161YA
SRF2012-181Y	SRF2012-181YA	SRF2012A-181YA
SRF2012-201Y	SRF2012-201YA	SRF2012A-201YA
SRF2012-221Y	SRF2012-221YA	SRF2012A-221YA
SRF2012-261Y	SRF2012-261YA	SRF2012A-261YA
SRF2012-300Y	SRF2012-300YA	No replacement
SRF2012-301Y	SRF2012-301YA	No replacement
SRF2012-361Y	SRF2012-361YA	SRF2012A-361YA
SRF2012-371Y	SRF2012-371YA	No replacement
SRF2012-501Y	SRF2012-501YA	No replacement
SRF2012-670Y	SRF2012-670YA	SRF2012A-670YA
SRF2012-671Y	SRF2012-671YA	No replacement
SRF2012-750Y	No replacement	No replacement
SRF2012-900Y	SRF2012-900YA	SRF2012A-900YA
SRF2012-901Y	SRF2012-901YA	No replacement

Please plan for the following deadlines:

Last time buy date: December 31, 2016

Last time ship date: March 31, 2017

Should you have any questions or need additional information, please feel free to contact [Customer Service/Inside Sales](#).