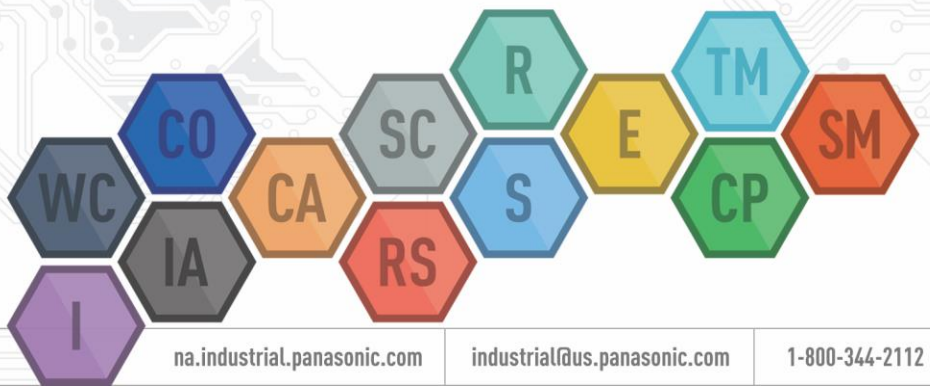


## Product Discontinuation Notice: EVP-AT2G1B000

PDN.PG26.04.02.2018-1

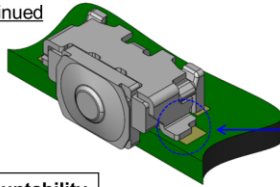
04.02.2018

<b>Effective Date:</b>	Immediate
<b>Last Time Buy Date:</b>	No last time buy opportunity.
<b>Last Eligible Ship Date:</b>	No last time ship opportunity.
<b>Discontinuation Details:</b>	Due to improvement of product design, Panasonic shall discontinue part number EVP-AT2G1B000
<b>Suggested Replacement:</b>	EVP-AT2L1B000
<b>Affected Part Numbers:</b>	EVP-AT2G1B000
<b>Datasheets:</b>	See attached.
<b>Notes:</b>	See below for improvement of peel off strength.

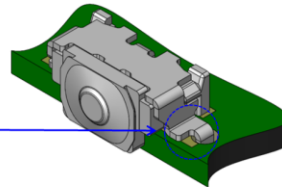


\* Improvement of mountability and peeling-off strength

Discontinued

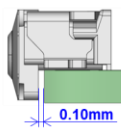


Terminal insertion

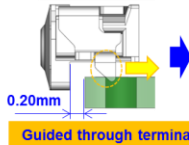


Change point

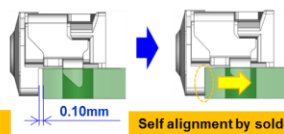
1. Mountability



Self alignment by soldering

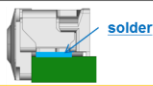


Guided through terminal

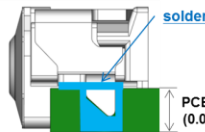
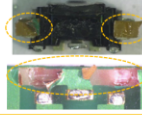


Self alignment by solder

2. Peel off strength



Land pattern is broken by impact in drop test. And switch is peeled off from PCB.



<Higher peeling-off strength>  
Improved peel off strength by fixed leg in through-hole by soldering

No overhang of terminal leg from PCB surface