

6

5

4

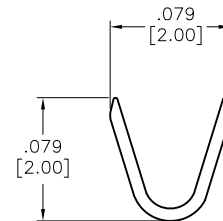
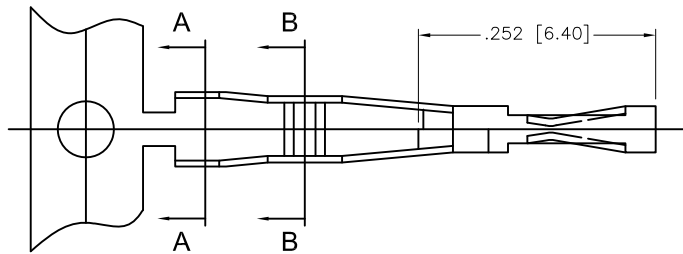
3

2

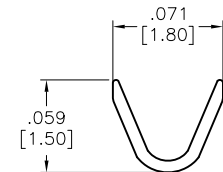
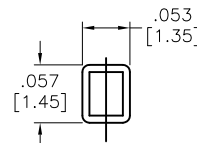
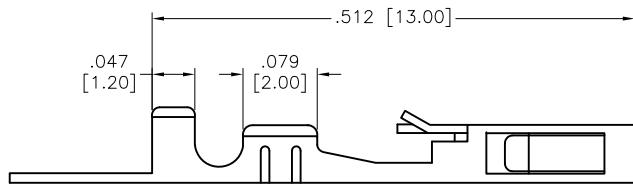
1

APPROVED: _____
DATE: _____ TITLE: _____

Rev	AWO #	Description	Date	Appr
-		RELEASED	7/1/09	
A		REDRAWM	03/22/13	



SECTION A-A



SECTION B-B

SPECIFICATIONS:

Material: Phosphor Bronze
Plating: Tin Plated
Thickness: 0.2mm
Wire Range: AWG#24~#28
Electrical:

Voltage rating: 250 VAC/DC
Current rating: AC/DC 3 A
Insulation resistance: 1,000 Mohms min
Dielectric withstanding voltage: 1,000 VAC for 1 minute
Operating temperature: -25°C to +85°C

Environmental:
Lead free, RoHS compliant.

UNLESS OTHERWISE SPECIFIED
ALL DIMENSIONS ARE INCHES [MM]
TOLERANCES: EXCEPT AS NOTED
INCHES HOLES
.X ± .10 Ø.X ± .10
.XX ± .020 Ø.XX ± .015
.XXX ± .015 Ø.XXX ± .010

ADAM TECH

909 Rahway Avenue, Union, NJ 07083
Phone: 908-687-5000 Fax: 908-687-5710

APPROVALS		DATE
DRAWN	SS	7/1/09
CHECKED		
APPROVED		

TITLE		
CRIMP CONTACT		
SIZE X	PART NO. CDH-C-R	REV. A
REF: S00016T	SCALE: NTS	SHEET 1 OF 1

6

5

4

3

2

1