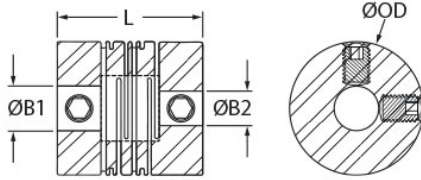




## MRSS20-7-6-A

Ruland MRSS20-7-6-A, 7mm x 6mm Short Slit Coupling, Aluminum, Set Screw Style, 20.0mm OD, 21.5mm length



### Description

Ruland MRSS20-7-6-A is a set screw style slit coupling with 7mm x 6mm bores, 20.0mm OD, and 21.5mm length. It is manufactured from a single piece of material and has two sets of intermittent slit cuts allowing for a maintenance-free coupling with high torsional stiffness in relation to comparable couplings, such as beam type. MRSS20-7-6-A is commonly used in precise positioning applications found in semiconductor, medical, and test and measurement equipment. This short style slit coupling is ideal for compact installations where the long type may not fit. It is a suitable alternative to comparatively sized disc couplings due to the ability to accommodate all forms of misalignment whereas a single disc coupling has no accommodation for parallel misalignment. MRSS20-7-6-A is zero-backlash, has a balanced design for reduced vibration at speeds up to 20,000 RPM, and can accommodate all forms of misalignment with light bearing loads. It is manufactured by Reliance Precision Ltd. in their County Cork, Ireland factory from 7075 aluminum for lightweight and low inertia. MRSS20-7-6-A is inventoried by Ruland and RoHS3 and REACH compliant.

### Product Specifications

<b>Bore (B1)</b>	7 mm	<b>Small Bore (B2)</b>	6 mm
<b>B1 Max Shaft Penetration</b>	8.6 mm	<b>B2 Max Shaft Penetration</b>	8.6 mm
<b>Outer Diameter (OD)</b>	20 mm	<b>Bore Tolerance</b>	+0.020 mm / +0.000 mm
<b>Length (L)</b>	21.5 mm	<b>Forged Set Screw</b>	M4
<b>Screw Material</b>	18-8 300 Series Stainless Steel	<b>Hex Wrench Size</b>	2.0 mm
<b>Screw Finish</b>	Bright	<b>Seating Torque</b>	1.76 Nm
<b>Number of Screws</b>	4	<b>Dynamic Torque Reversing</b>	1.30 Nm
<b>Angular Misalignment</b>	3°	<b>Dynamic Torque Non-Reversing</b>	1.95 Nm
<b>Parallel Misalignment</b>	0.12 mm	<b>Peak Torque</b>	3.25 Nm
<b>Axial Motion</b>	0.50 mm	<b>Torsional Stiffness</b>	1.9 Nm/Deg
<b>Moment of Inertia</b>	0.0027289 lb-in <sup>2</sup>	<b>Maximum Speed</b>	20,000 RPM
<b>Full Bearing Support Required?</b>	Yes	<b>Zero-Backlash?</b>	Yes
<b>Balanced Design</b>	Yes	<b>Material Specification</b>	7075-T651 Extruded and Drawn Aluminum Bar
<b>Temperature</b>	-110°F to 175°F (-80°C to 80°C)	<b>Finish Specification</b>	SurTec 650
<b>Manufacturer</b>	Reliance Precision Limited	<b>Country of Origin</b>	Ireland
<b>Weight (lbs)</b>	0.031000	<b>UPC</b>	634529299203
<b>Tariff Code</b>	8483.60.8000	<b>UNSPC</b>	31163003
<b>Note 1</b>	Performance ratings are for guidance only. The user must determine suitability for a particular application.		
<b>Prop 65</b>			

**⚠ WARNING** This product can expose you to the chemical Nickel (metallic), known to the State of California to cause cancer. For more information go to [www.P65Warnings.ca.gov](http://www.P65Warnings.ca.gov).