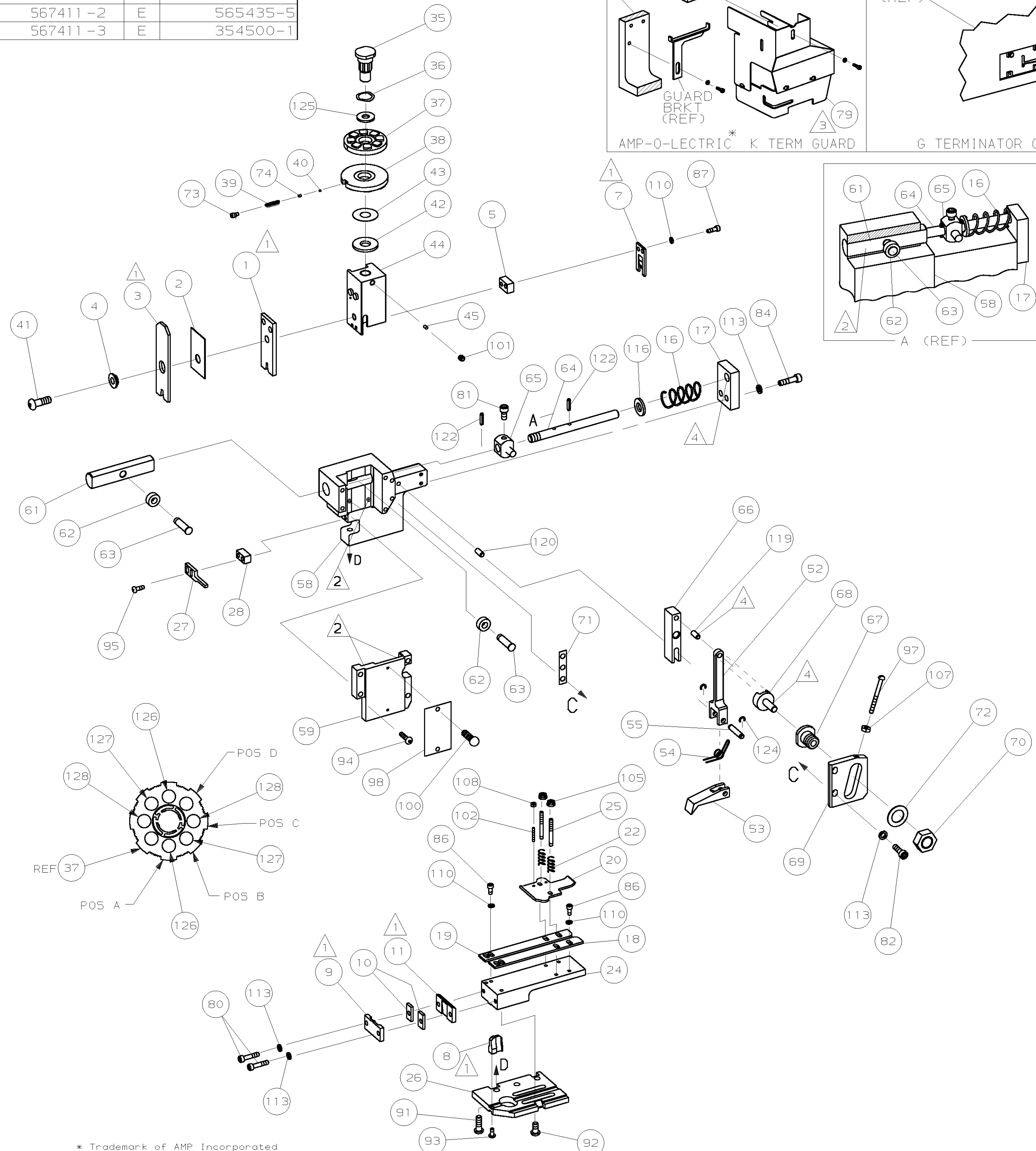
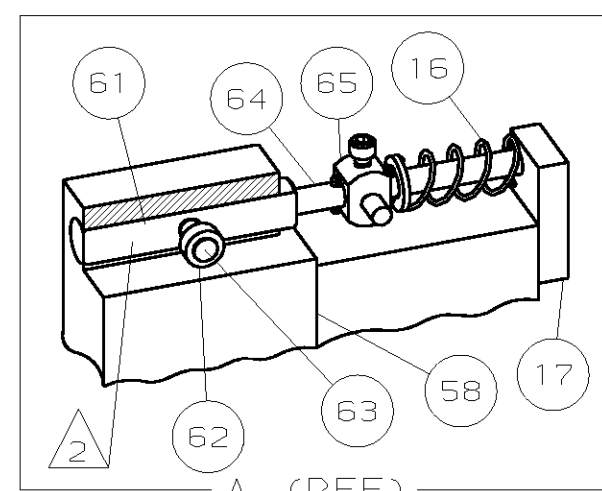
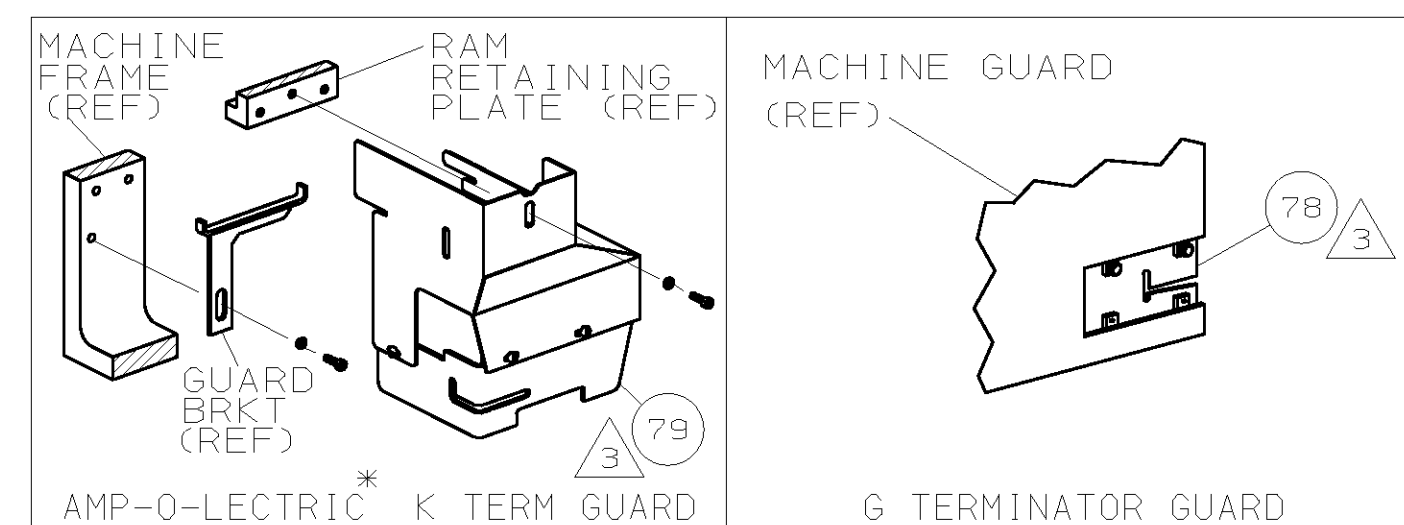


PART NUMBER	REV	FIRST USED
567411-1	0	854400-1
567411-2	E	565435-5
567411-3	E	354500-1

OBSOLETE

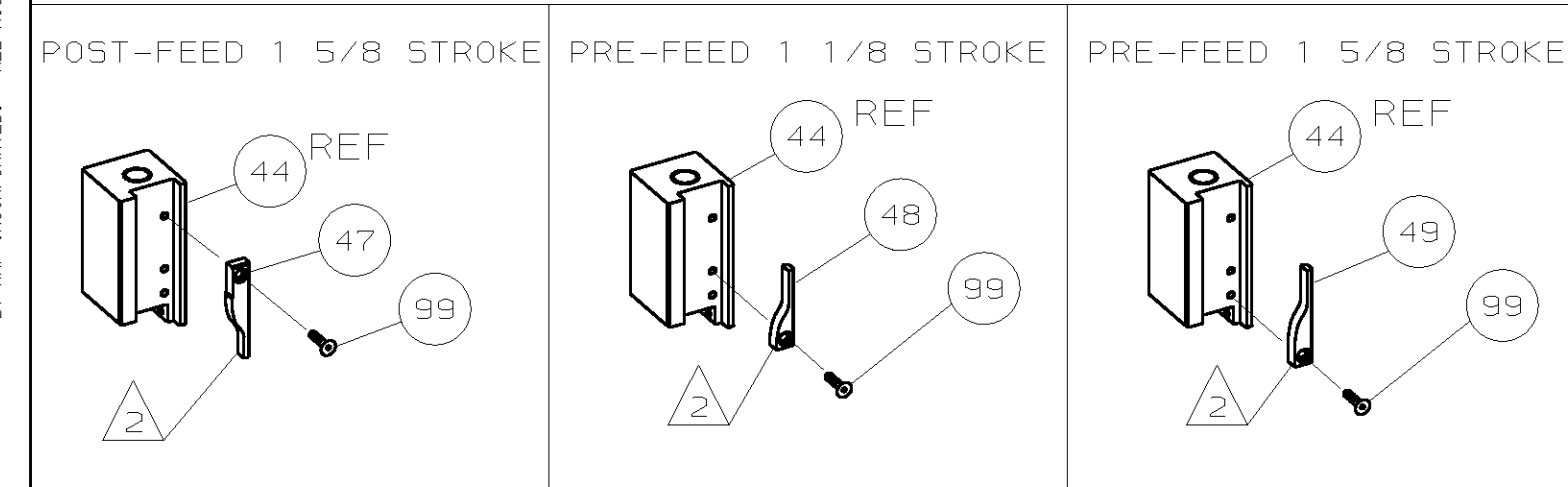


TERMINAL NAME:	
RING, AMPLIVAR	63612
TERM APPL SPEC	114-2084

CRIMPING DATA			
PAD LTR	CRIMP HEIGHT	WIRE SIZE	
A	.062 ±.002	18	
B	.059 ±.002	20	
C	.056 ±.002	22	
D	NOT	USED	
CRIMP	SIZE	TYPE	RANGE
WIRE	.100	F	22-18
INSUL	.220	F	.125-.165
FEED	APPL INST	SET UP GAGE	LAYOUT
.897	408-8039	458638-1	L1418
WIRE STRIP LENGTH			
-			

QTY	REQD	PER	ASSY	PART NO	DESCRIPTION	ITEM NO	
2	2	2	-	C	1-354779-0	PIN, WIRE DISC (.3040)C	129
2	2	2	-	C	354779-4	PIN, WIRE DISC (.3010)B	128
2	2	2	-	C	9-354778-7	PIN, WIRE DISC (.2980)A	126
1	1	1	-	A	986950-1	WASHER, FLAT PRECISION	125
2	2	2	-	A	21045-3	RING, RET "C" (Ø.187)FD PIN	124
							123
2	2	2	-	A	5-21028-1	PIN, STD SPRING (Ø.12)FD ADJ ROD	122
							121
1	1	1	-	A	1-21030-7	PIN, DOWEL (Ø.187x1.50)H5G	120
1	1	1	-	A	1-21030-1	PIN, DOWEL (Ø.187x.50)LEVER	119
							118
							117
1	1	1	-	A	21899-4	WASHER, FLAT (Ø5/16)SCR ADJ	116
							115
							114
6	6	6	-	A	21024-5	WASHER, LOCK (NO.10)SHEAR PL	113
							112
							111
6	6	6	-	A	21024-4	WASHER, LOCK (NO.8)SHEAR BL	110
							109
2	2	2	-	A	21018-4	NUT, HEX (4-40)DRAG	108
1	1	1	-	A	21018-5	NUT, HEX (6-32)FD ADJ PL	107
							106
2	2	2	-	A	21022-2	NUT, HEX 5L (8-32)DRAG STUD	105
							104
							103
2	2	2	-	A	4-21078-8	SKT SKT SET (4-40x.75)DRAG	102
1	1	1	-	A	21009-2	SCR, SKT SET (1/4-20x.25)RAM	101
2	2	2	-	A	21017-2	SCR, DRIVE (#2x.19) ID PLATE	100
1	1	1	-	A	1-21002-7	SCR, BHC (6-32x.38)CAM	99
1	1	1	-	B	461264-1	PLATE, IDENTIFICATION	98
1	1	1	-	A	6-23715-5	SCR, PAN HD (6-32x1.50)FEED ADJ	97
							96
2	2	2	-	A	2-21002-2	SCR, BHC (8-32x.50)STRIPPER	95
4	4	4	-	A	2-21002-9	SCR, BHC (10-32x.75)H5G CAP	94
1	1	1	-	A	22733-8	SCR, BHC (8-32x.38 LW)ANVIL	93
4	4	4	-	A	3-21002-3	SCR, BHC (1/4-20x.50)ST 6D PL	92
3	3	3	-	A	2-22733-8	SCR, BHC (1/4-20x.62)BASE PL	91
							90
							89
							88
2	2	2	-	A	2-21000-7	SCR, 5HC (8-32x.50)SLUG BLADE	87
4	4	4	-	A	2-21000-6	SCR, 5HC (8-32x.38)STRIP GUIDE	86
							85
2	2	2	-	A	3-21000-7	SCR, SKT CAP (10-32x.75)FD GDE	84
							83
2	2	2	-	A	3-21000-6	SCR, SKT CAP (10-32x.62)FD ADJ P	82
1	1	1	-	A	3-21000-4	SCR, SKT CAP (10-32x.38)PIVOT BL	81
2	2	2	-	A	3-21000-8	SCR, SKT CAP (10-32x.88)5H PL	80
-	REF	-	-	A	455745-1	GUARD, WINDOW	79
REF	-	-	-	A	679532-1	INSERT, GUARD	78
							77
							76
							75
1	1	1	-	A	690603-1	SPRING, ASSIST	74
1	1	1	-	A	23030-1	SCR, SKT CAP (6-32x.25)CP DSC	73
1	1	1	-	A	458109-1	WASHER, FLAT (SPECIAL)	72
1	1	1	-	A	690517-1	SPACER	71
							70
							69
							68
							67
							66
							65
							64
							63
							62
							61
							60
							59
							58
							57
							56
							55
							54
							53
							52
							51
							50
1	1	1	-	B	690602-6	CAM, PRE-FEED 1 5/8 ST	49
-	1	-	-	B	690602-5	CAM, PRE-FEED 1 1/8 ST	48
-	-	-	-	B	690501-4	CAM, POST-FEED 1 5/8 ST	47
							46
1	1	1	-	A	690191-1	PLUG, NYLON	45
1	1	1	-	C	455674-1	RAM	44
1	1	1	-	A	690125-1	WASHER, LAMINATED	43
1	1	1	-	A	690124-1	WASHER, RAM	42
1	1	1	-	A	7-21002-9	BOLT, CRIMPER (5/16-24x1.00)	41
1	1	1	-	A	23241-6	BALL, STEEL	40
1	1	1	-	A	690170-1	SPRING, COMPRESSION	39
1	1	1	-	C	690142-1	DISC, INSULATION	38
1	1	1	-	D	354777-1	WIRE DISC, PLASTIC	37
1	1	1	-	A	22480-5	WASHER, SPRING	36
1	1	1	-	B	690212-1	POST, RAM	35
							34
							33
							32
							31
							30
							29
1	1	1	-	B	3-690451-7	SPACER, STRIPPER	28
1	1	1	-	A	240639-1	STRIPPER	27
1	1	1	-	C	455676-1	PLATE, BASE	26
2	2	2	-	A	22354-8	DRAG, STUD	25
1	1	1	-	B	455678-7	PLATE, STRIP GUIDE	24
							23
2	2	2	-	A	4-22281-1	SPRING, DRAG	22
							21
1	1	1	-	A	454177-1	DRAG, STOCK	20
1	1	1	-	B	4-458030-2	GUIDE, STRIP (REAR)	19
1	1	1	-	C	4-458031-2	GUIDE, STRIP (FRONT)	18
1	1	1	-	A	454178-1	GUIDE, FEED ROD	17
1	1	1	-	A	4-22284-9	SPRING, FEED RETURN	16
							15
							14
							13
							12
1	1	1	-	B	691901-3	PLATE, REAR SHEAR	11
2	2	2	-	C	1-240645-6	SPACER, SHEAR PLATE	10
1	1	1	-	B	690783-3	PLATE, FRONT SHEAR	9
1	1	1	-	D	1-459866-7	ANVIL	8
1	1	1	-	B	691157-3	BLADE, SLUG	7
							6
1	1	1	-	C	240641-3	SPACER, SLUG BLADE	5
1	1	1	-	B	238009-1	SPACER, BLOCK CRIMPER	4
1	1	1	-	C	1-683453-3	CRIMPER, INSULATION	3
1	1	1	-	B	1-455888-0	SPACER, CRIMPER	2
1	1	1	-	C	1-456407-0	CRIMPER, WIRE	1

- 1 RECOMMENDED SPARE PARTS.
- 2 GREASE LIGHTLY.
- 3 GUARD MUST BE IN PLACE WHEN OPERATING APPLICATOR IN A BENCH MACHINE.
- 4 LUBRICATE DAILY USING NO. 20 MACHINE OIL.



LOC	UNIT
A	T TERMINATING UNIT LEADMAKER
B	K TERMINATING UNIT BENCH MACHINE
C	G TERMINATING UNIT BENCH MACHINE

DIMENSIONS IN INCHES. DO NOT SCALE PRINT.		MATERIAL		FINISH	
TOLERANCES UNLESS OTHERWISE SPECIFIED:		HT TR		FIN	
2 PLC DEC ±		-		-	
3 PLC DEC ±		-		-	
4 PLC DEC ±		-		-	
ANGLES ±		-		-	
SURF TEXTURE: ✓		-		-	
REMOVE BURRS, BREAK SHARP EDGES R.015 MAX		-		-	
REVISION RECORD		PARTS LIST		PARTS LIST	
E ECN 0150-1034-03		TE 9-03		APP 3/21/94	
D 0150-7730-97		TB 5-97		E KOOTIE	
C EC 0150-5333-94, ADD -3		CE 3-94		REL 4/13/94	
P/F LTR		APP DATE		B. MORGAN	
SCALE		DWG NO		567411	
CASE CODE 00779		CUSTOMER AND ASSEMBLY DRAWING		MACHINE REF MINI APPL	
1 OF 1		REV E		RESTRICTED TO	

THIS DRAWING IS A CONTROLLED DOCUMENT.

THIS DRAWING IS UNRELEASED. RELEASED FOR PUBLICATION BY AMP INCORPORATED. ALL RIGHTS RESERVED. COPYRIGHT 1986 AMP INCORPORATED.