

### TECHNICAL DATA

ADAPTION - TEMPERATURE RANGE: -25°C / +90°C  
 BEARING - TEMPERATURE RANGE: -40°C / +90°C

MATERIAL: PA  
 INSERT: V0  
 FLAMMABILITY ACC. UL94: V0  
 CONTACTS: BRASS NICKEL PLATED AND GOLD-PLATED

ELECTRICAL DATA  
 CURRENT VOLTAGE: 250V  
 RATED CURRENT Tu=40°C: 4A

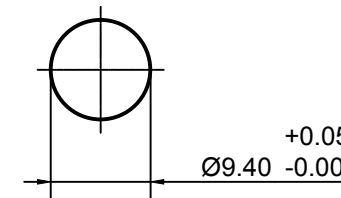
### Technische Daten

Einsatz - Temperaturbereich: -25°C / +90°C  
 Lager - Temperaturbereich: -40°C / +90°C

Werkstoffe: PA  
 Kontaktträger: V0  
 Brennbarkeit gem. UL94: V0  
 Kontakte: Messing vernickelt und goldbeschichtet

Elektrische Daten  
 Betriebsspannung: 250V  
 Bemessungsstrom Tu=40°C: 4A

MOUNTING HOLE  
 Montagebohrung



ENG.-NO.: 0912-050A0-01001

DESCRIPTION EC NO: IPG2013-0501 DRWN: BBRAUCH 2013/01/18 CHKD: APOHL APPR: APOHL 2013/02/11	QUALITY SYMBOLS	GENERAL TOLERANCES (UNLESS SPECIFIED)	DIMENSION STYLE MM ONLY	SCALE 5:1	DESIGN UNITS METRIC	THIRD ANGLE PROJECTION																														
	$\nabla = 0$ $\nabla = 0$	<table border="1"> <tr><th></th><th>mm</th><th>INCH</th></tr> <tr><td>4 PLACES</td><td>±---</td><td>±---</td></tr> <tr><td>3 PLACES</td><td>±---</td><td>±---</td></tr> <tr><td>2 PLACES</td><td>±0.05</td><td>±---</td></tr> <tr><td>1 PLACE</td><td>±0.3</td><td>±---</td></tr> <tr><td>0 PLACE</td><td>±0.5</td><td>±---</td></tr> </table>		mm	INCH	4 PLACES	±---	±---	3 PLACES	±---	±---	2 PLACES	±0.05	±---	1 PLACE	±0.3	±---	0 PLACE	±0.5	±---	<table border="1"> <tr><th>mm</th><th>INCH</th></tr> <tr><td>4 PLACES</td><td>±---</td></tr> <tr><td>3 PLACES</td><td>±---</td></tr> <tr><td>2 PLACES</td><td>±0.05</td></tr> <tr><td>1 PLACE</td><td>±0.3</td></tr> <tr><td>0 PLACE</td><td>±0.5</td></tr> </table>	mm	INCH	4 PLACES	±---	3 PLACES	±---	2 PLACES	±0.05	1 PLACE	±0.3	0 PLACE	±0.5	DRAWN BY: BBRAUCH 2013/01/18 CHECKED BY: DATE APOHL 2013/01/25 APPROVED BY: DATE APOHL 2013/02/11	INS M12 5P AC MA PA BK UNSH SOL SOLDER TERMINATION	
	mm	INCH																																		
4 PLACES	±---	±---																																		
3 PLACES	±---	±---																																		
2 PLACES	±0.05	±---																																		
1 PLACE	±0.3	±---																																		
0 PLACE	±0.5	±---																																		
mm	INCH																																			
4 PLACES	±---																																			
3 PLACES	±---																																			
2 PLACES	±0.05																																			
1 PLACE	±0.3																																			
0 PLACE	±0.5																																			
DESCRIPTION	ANGULAR ± 1°	DRAFT WHERE APPLICABLE MUST REMAIN WITHIN DIMENSIONS	MATERIAL NO. 1200705237	DOCUMENT NO. SD-120070-313	SHEET NO. 1 OF 1																															
REV A			SIZE A3	THIS DRAWING CONTAINS INFORMATION THAT IS PROPRIETARY TO MOLEX INCORPORATED AND SHOULD NOT BE USED WITHOUT WRITTEN PERMISSION																																

