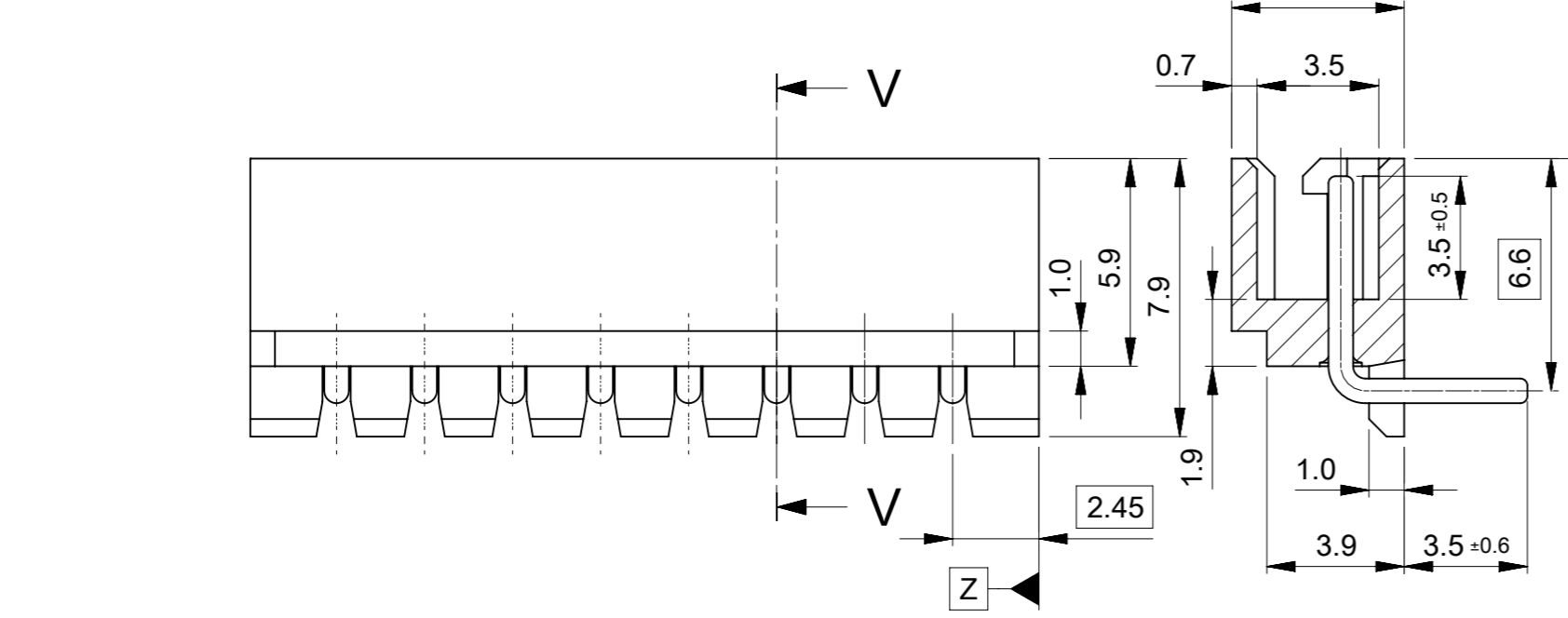
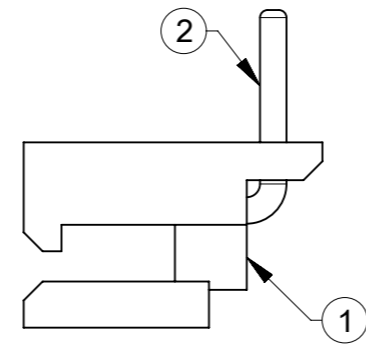


注記：
 NOTES:
 ① 材質：TABLE 1参照
 MATERIAL：SEE TABLE 1
 ② 梱包仕様書、製品仕様書、嵌合相手はSHEET 2をご参照ください。
 PLEASE REFER TO SHEET 2 FOR PACKAGING SPECIFICATION,
 PRODUCT SPECIFICATION AND MATE WITH.
 ③ 発注番号：ORDER NO.
 22057**5

極数
CIRCUIT SIZE

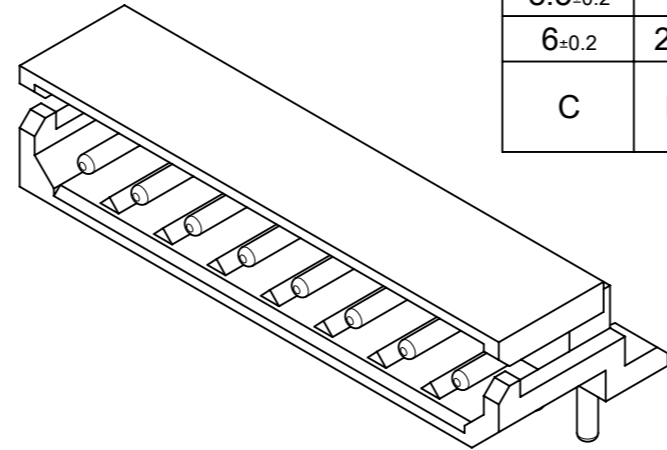


SECTION V-V

38.5±0.3	35	39.9±0.3	ポリ袋 POLY BAG	5268NA	526815A	22057155	15
36±0.3	32.5	37.4±0.3			526814A	22057145	14
33.5±0.3	30	34.9±0.3			526813A	22057135	13
31±0.3	27.5	32.4±0.3			526812A	22057125	12
28.5±0.25	25	29.9±0.25			526811A	22057115	11
26±0.25	22.5	27.4±0.25			526810A	22057105	10
23.5±0.25	20	24.9±0.25			526809A	22057095	9
21±0.25	17.5	22.4±0.25			526808A	22057085	8
18.5±0.25	15	19.9±0.25			526807A	22057075	7
16±0.25	12.5	17.4±0.25			526806A	22057065	6
13.5±0.25	10	14.9±0.25			526805A	22057055	5
11±0.25	7.5	12.4±0.25			526804A	22057045	4
8.5±0.2	5	9.9±0.2			526803A	22057035	3
6±0.2	2.5	7.4±0.2	526802A	22057025	2		
C	B	A	梱包形態 PACKAGING	シリーズ番号 SERIES NO.	ENG. NO.	③ 発注番号 ORDER NO.	極数 CIRCUIT SIZE

① TABLE 1

番号 NO.	部品 PART	材質 MATERIAL	
①	ハウジング HOUSING	ポリアミド(PA), UL94V-0, 色: ナチュラル(白) POLYAMIDE(PA), UL94V-0, COLOR: NATURAL (WHITE)	
②	ピン PIN	母材 BASE METAL	黄銅(Φ0.7) BRASS (Φ0.7)
		めっき PLATING	錫めっき : 3 MICROMETER MIN. TIN
		下地めっき UNDERPLATING	銅めっき : 1 MICROMETER MIN. COPPER (UNDERPLATING)

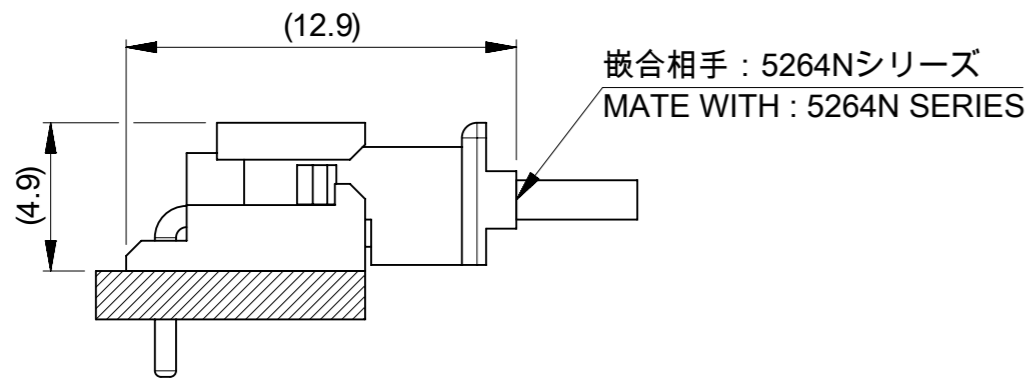
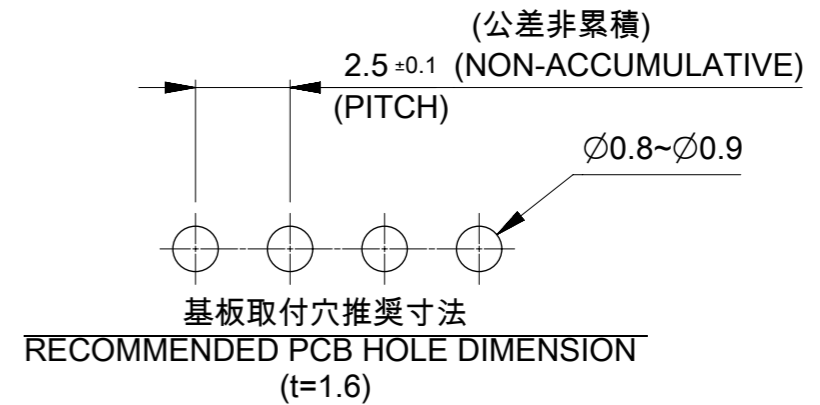
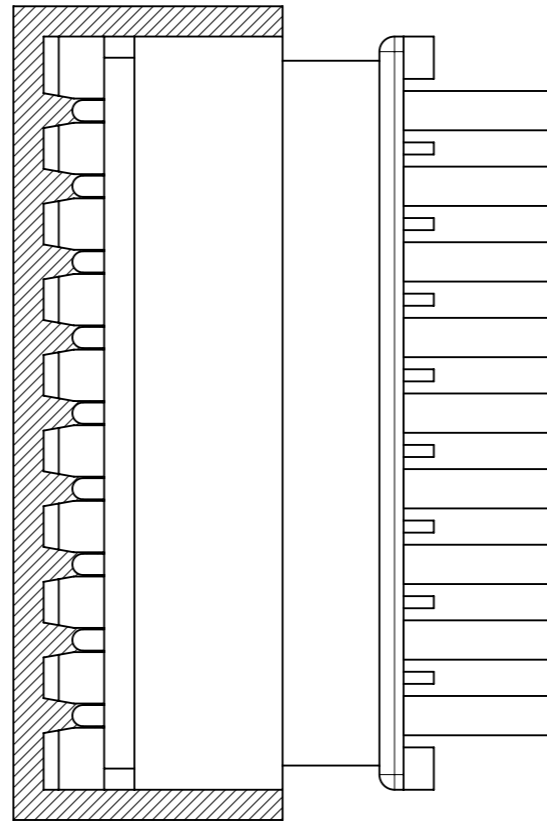
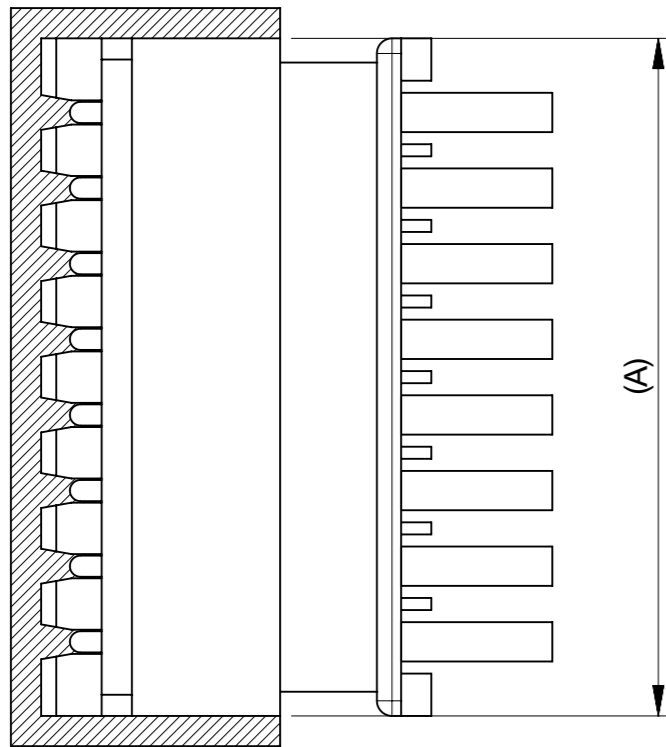


THIS DRAWING CONTAINS INFORMATION THAT IS PROPRIETARY TO MOLEX ELECTRONIC TECHNOLOGIES, LLC AND SHOULD NOT BE USED WITHOUT WRITTEN PERMISSION

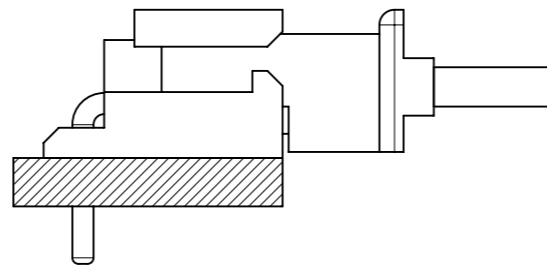
DIMENSION UNITS mm	SCALE NTS	CURRENT REV DESC:		molex		
GENERAL TOLERANCES (UNLESS SPECIFIED)		EC NO: 727270				
ANGULAR TOL ± 3.0°	4 PLACES ±	DRWN: SOKUMURA01	2022/11/30	PRODUCT CUSTOMER DRAWING		
2 PLACES ± 0.2	3 PLACES ±	CHK'D: SAKIYAMA	2023/03/09	DOCUMENT NUMBER		
1 PLACE ± 0.2	2 PLACES ±	APPR: AIDA	2023/03/09	DOC TYPE DOC PART REVISION		
0 PLACES ±	1 PLACE ±	INITIAL REVISION:	2019/06/21	52680001-SD		
DRAFT WHERE APPLICABLE MUST REMAIN WITHIN DIMENSIONS	THIRD ANGLE PROJECTION	DRWN: ABABU01	2020/05/13	MATERIAL NUMBER		
		APPR: KOMURAKAMI		CUSTOMER		
				SEE CHART		
				GENERAL		
				SHEET NUMBER		
				1 OF 2		

△ 適用製品及び各種仕様書
 APPLICABLE PRODUCTS AND VARIOUS SPECIFICATIONS

梱包仕様書 PACKAGING SPECIFICATION	ORDER NO.	SPECIFICATION NO.
	22057**5	SPK-5268-001 PS 001
嵌合相手 MATE WITH	RECEPTACLE HOUSING	
シリーズ番号 SERIES NO.	5264N	
製品仕様書 PRODUCT SPECIFICATION	PS-5264-001 PS 001	



2-8極
 2-8 CIRCUIT



9-15極
 9-15 CIRCUIT

嵌合図
 MATING CONNECTORS

THIS DRAWING CONTAINS INFORMATION THAT IS PROPRIETARY TO MOLEX ELECTRONIC TECHNOLOGIES, LLC AND SHOULD NOT BE USED WITHOUT WRITTEN PERMISSION									
DIMENSION UNITS	SCALE	CURRENT REV DESC:							
mm	NTS	<p>molex</p> <p>MINI-SPOX 2.5 W/B RIGHT ANGLE PLUG ASSEMBLY WITHOUT COIN COPPER UNDERPLATING</p> <p>PRODUCT CUSTOMER DRAWING</p> <p>DOCUMENT NUMBER: 52680001-SD DOC TYPE: PSD DOC PART: 000 REVISION: B</p> <p>DRAFT WHERE APPLICABLE MUST REMAIN WITHIN DIMENSIONS</p> <p>THIRD ANGLE PROJECTION</p> <p>DRAWING: A3-SIZE SERIES: 5268 MATERIAL NUMBER: SEE SHEET 1 CUSTOMER: GENERAL SHEET NUMBER: 2 OF 2</p>							
GENERAL TOLERANCES (UNLESS SPECIFIED)									
ANGULAR TOL	± 3.0 °								
4 PLACES	±								
3 PLACES	±								
2 PLACES	± 0.2								
1 PLACE	± 0.2								
0 PLACES	±								