

# Product Document



## Quick Start Guide

QG000128

# TMD3702VC

## Narrow ALS, Color and Proximity Sensor Evaluation Kit

TMD3702VC-EVM

v1-00 • 2018-Dec-12

---

---

# Content Guide

---

<b>1</b>	<b>Out of the Box.....</b>	<b>3</b>	<b>6</b>	<b>Contact and Support.....</b>	<b>9</b>
<b>2</b>	<b>Software Installation.....</b>	<b>4</b>			
<b>3</b>	<b>Connect Hardware.....</b>	<b>6</b>			
<b>4</b>	<b>Start the Application.....</b>	<b>7</b>			
<b>5</b>	<b>Uninstall Application.....</b>	<b>8</b>			

# 1 Out of the Box

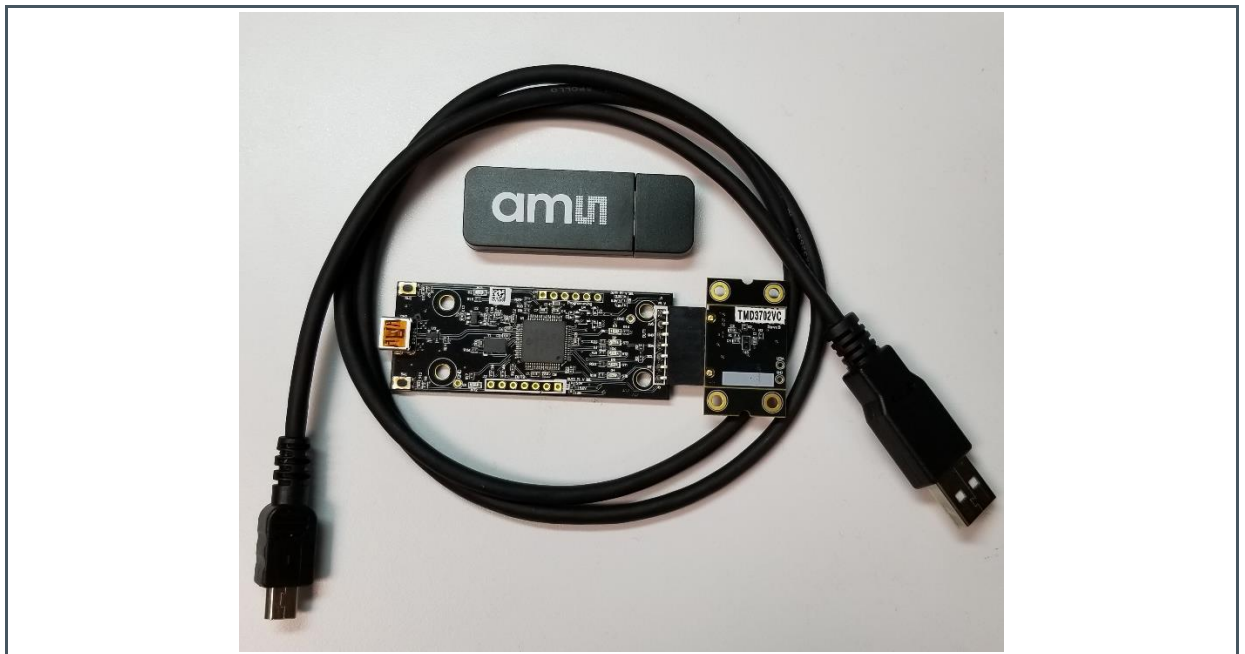


For a detailed description of the TMD3702VC Narrow ALS, Color and Proximity Sensor Evaluation Kit, please refer to User Guide:

- UG000414

Each TMD3702VC Evaluation Kit comes with the following components:

**Figure 1:**  
Evaluation Kit Contents

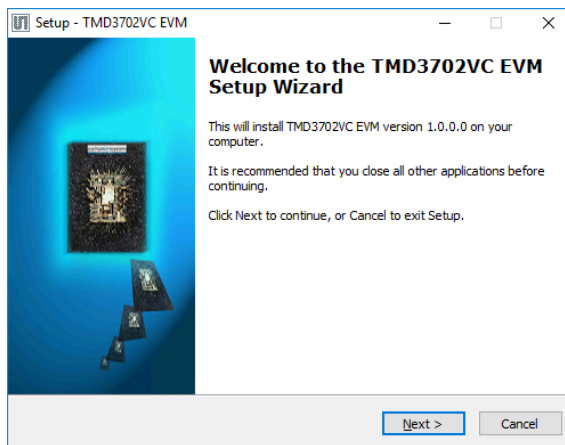


No.	Item	Description
1	TMD3702VC Daughter Card	PCB with TMD3702VC sensor installed
2	EVM Controller Board	Used to communicate USB to I2C
3	USB Cable (A to Mini-B)	Connects EVM controller to PC
4	Flash Drive	Include application installer and documents

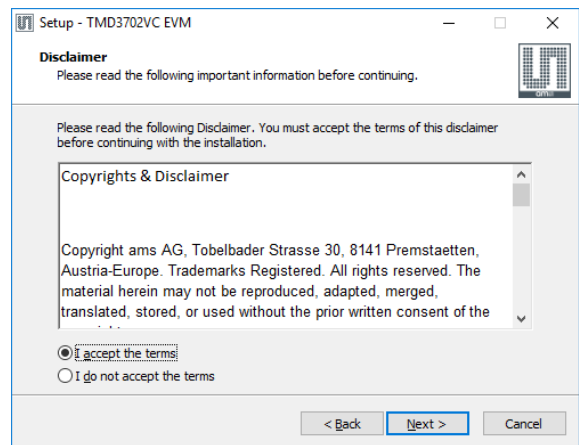
## 2 Software Installation

1. Plug in the **ams** flash drive into an unused USB port.
2. Double-click the **Setup.exe** file on the flash drive, or click Start > Run and type E:setup.exe and press Enter. **IMPORTANT:** Use the appropriate drive letter in the above command to install the software. Flash Drive will commonly be assigned the next available drive letter for example C: hard drive D: CD-ROM E: flash drive
3. The Setup Wizard will open and guide you through the installation of the TMD3702VC host software, (Figure 2 through 8).
4. At the end of the installation, click Finish to exit the setup.

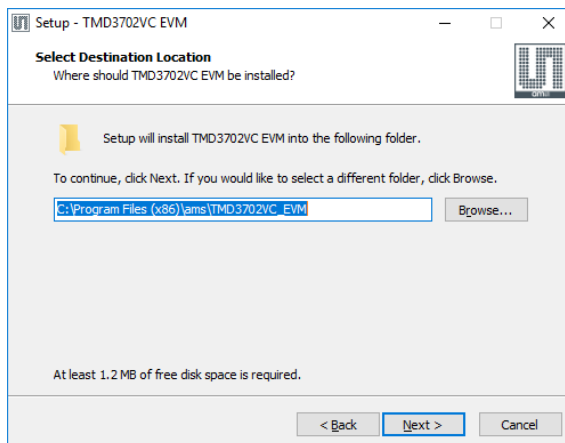
**Figure 2:**  
Welcome Screen



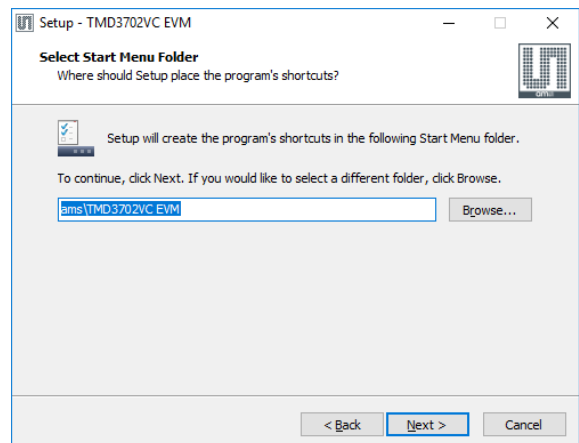
**Figure 3:**  
Liability Disclaimer



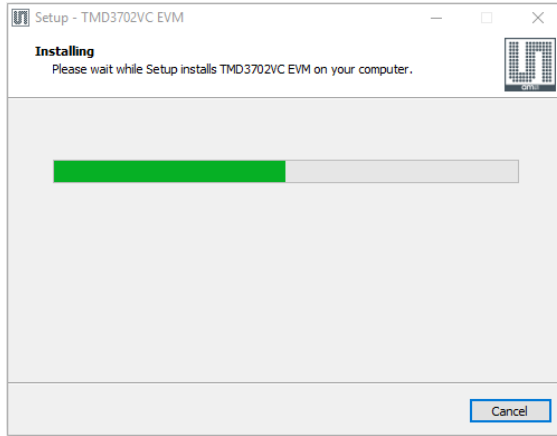
**Figure 4:**  
Select Installation Folder



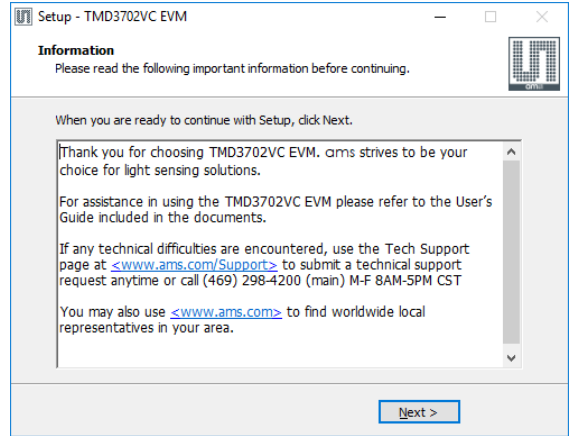
**Figure 5:**  
Select Start Menu Folder



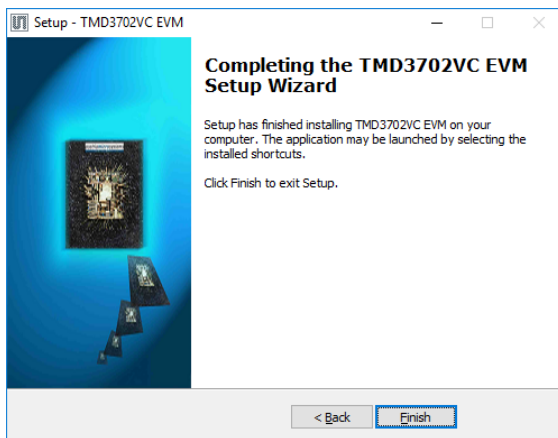
**Figure 6:**  
Installation in Progress



**Figure 7:**  
Information Screen



**Figure 8:**  
Installation Completed Successfully



---

## 3 Connect Hardware

---

Plug the TMD3702VC Daughterboard into the Controller board. (Figure 1) Always use ESD procedures when handling the EVM.

Using the enclosed USB cable, plug the mini-B connector into the EVM module. Using the other end of the cable, plug the USB A-connector into a USB port on the computer.

When the USB cable is connected, the green LED should flash on power up to indicating that power is being received via the USB interface, and the controller board processor is running. If the green LED does not flash, check the USB cable connections; unplug the USB cable and try again. If the green LED still does not flash, check the PC for USB error messages.

---

## 4 Start the Application

---

To start the application select ams > TMD3702VC EVM > TMD3702VC EVM on the All Programs menu. The default installation directory depending on the device and the operating system you are using is:

C:\Program Files\ams\TMD3702VC\_EVM Windows 32 bit operating systems

C:\Program Files (x86)\ams\TMD3702VC\_EVM Windows 64 bit operating systems

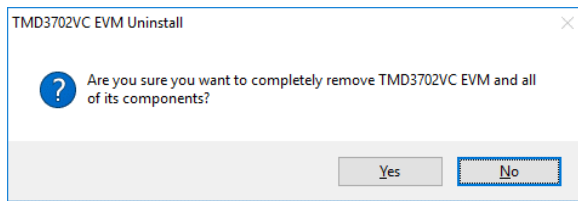
A different install path may be selected by the user during the install (Figure 4). When started, the TMD3702VC window will open on the PC and automatically connect to the hardware.



## 5 Uninstall Application

To remove the software from your computer (Figure 9), select ams > TMD3702VC EVM > Uninstall TMD3702VC EVM or use the Windows Control Panel.

**Figure 9:**  
**Remove Installation**



---

## 6 Contact and Support

---

For detail in using the TMD3702VC EVM please refer to the User's Guide included in the documents.

If any technical difficulties are encountered, use the Tech Support page at [www.ams.com/Support](http://www.ams.com/Support) to submit a technical support request anytime or call (469) 298-4200 (main) M-F 8AM-5PM CST

You may also use [www.ams.com](http://www.ams.com) to find worldwide local representatives in your area.

### Headquarters

ams AG  
Tobelbader Strasse 30  
8141 Premstaetten  
Austria, Europe  
Tel: +43 (0) 3136 500 0

Please visit our website at [www.ams.com](http://www.ams.com)

Buy our products or get free samples online at [www.ams.com/Products](http://www.ams.com/Products)

Technical Support is available at [www.ams.com/Technical-Support](http://www.ams.com/Technical-Support)

Provide feedback about this document at [www.ams.com/Document-Feedback](http://www.ams.com/Document-Feedback)

For sales offices, distributors and representatives go to [www.ams.com/Contact](http://www.ams.com/Contact)

For further information and requests, e-mail us at [ams\\_sales@ams.com](mailto:ams_sales@ams.com)

Copyright ams AG. Trademarks Registered. All rights reserved. The material herein may not be reproduced, adapted, merged, translated, stored, or used without the prior written consent of the copyright owner.

ams AG shall not be liable to recipient or any third party for any damages, including but not limited to personal injury, property damage, loss of profits, loss of use, interruption of business or indirect, special, incidental or consequential damages, of any kind, in connection with or arising out of the furnishing, performance or use of the technical data herein. No obligation or liability to recipient or any third party shall arise or flow out of ams AG rendering of technical or other services.