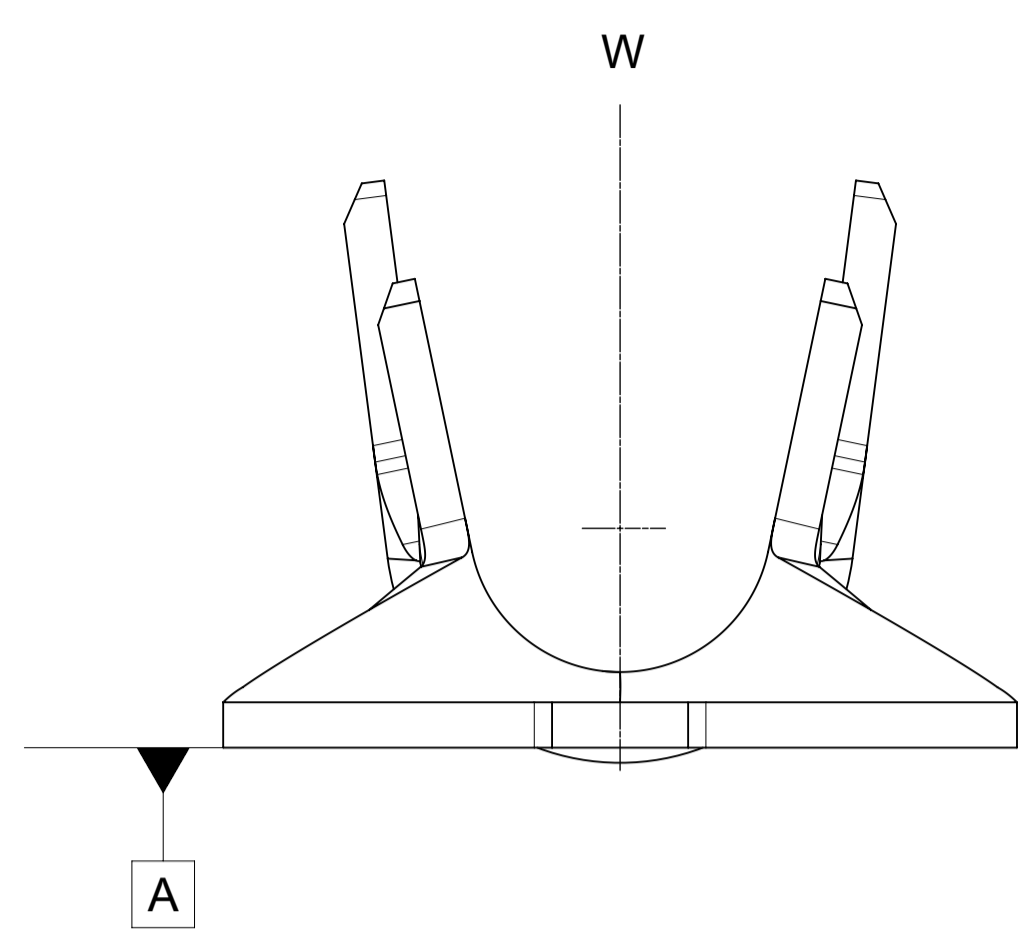
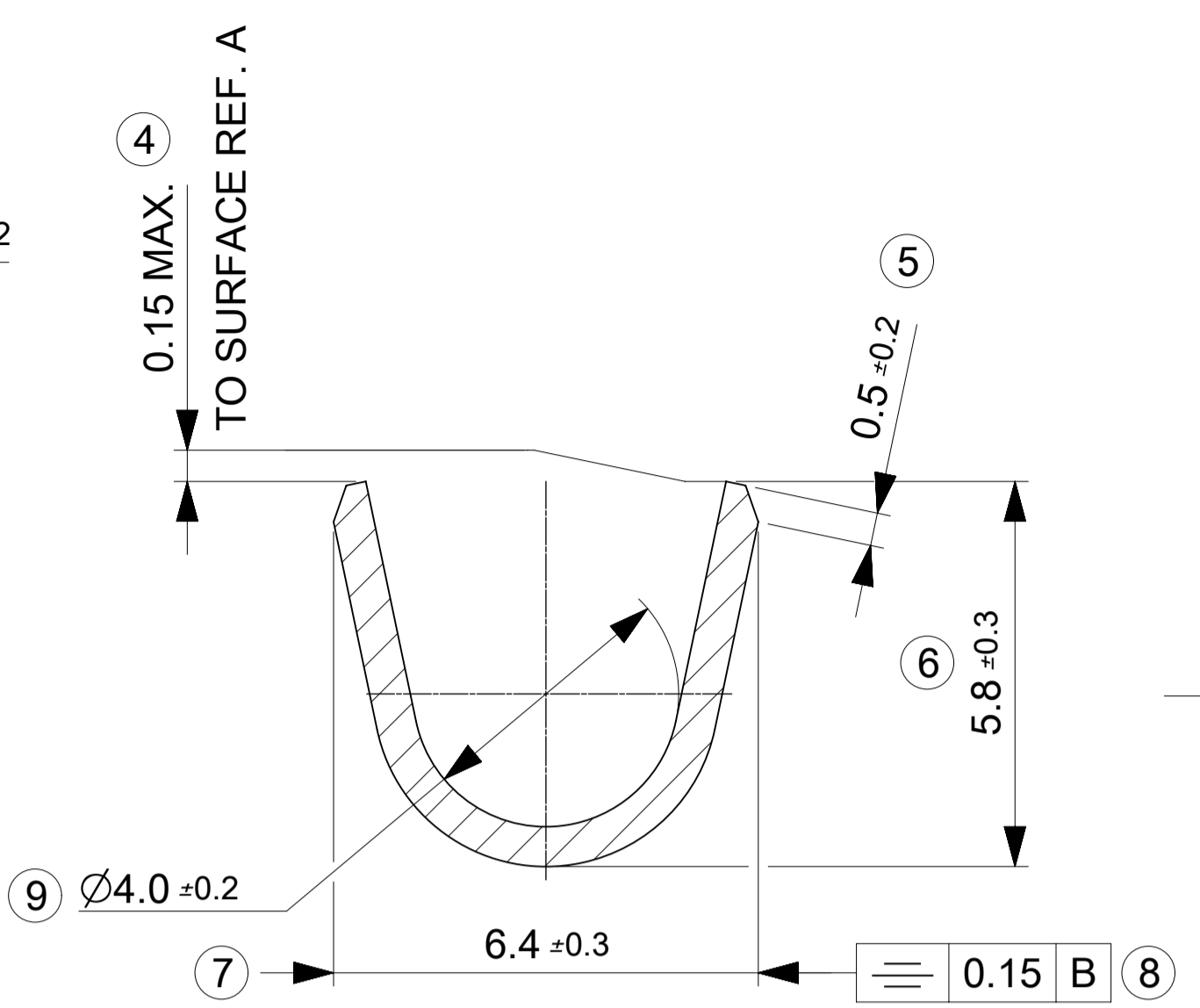
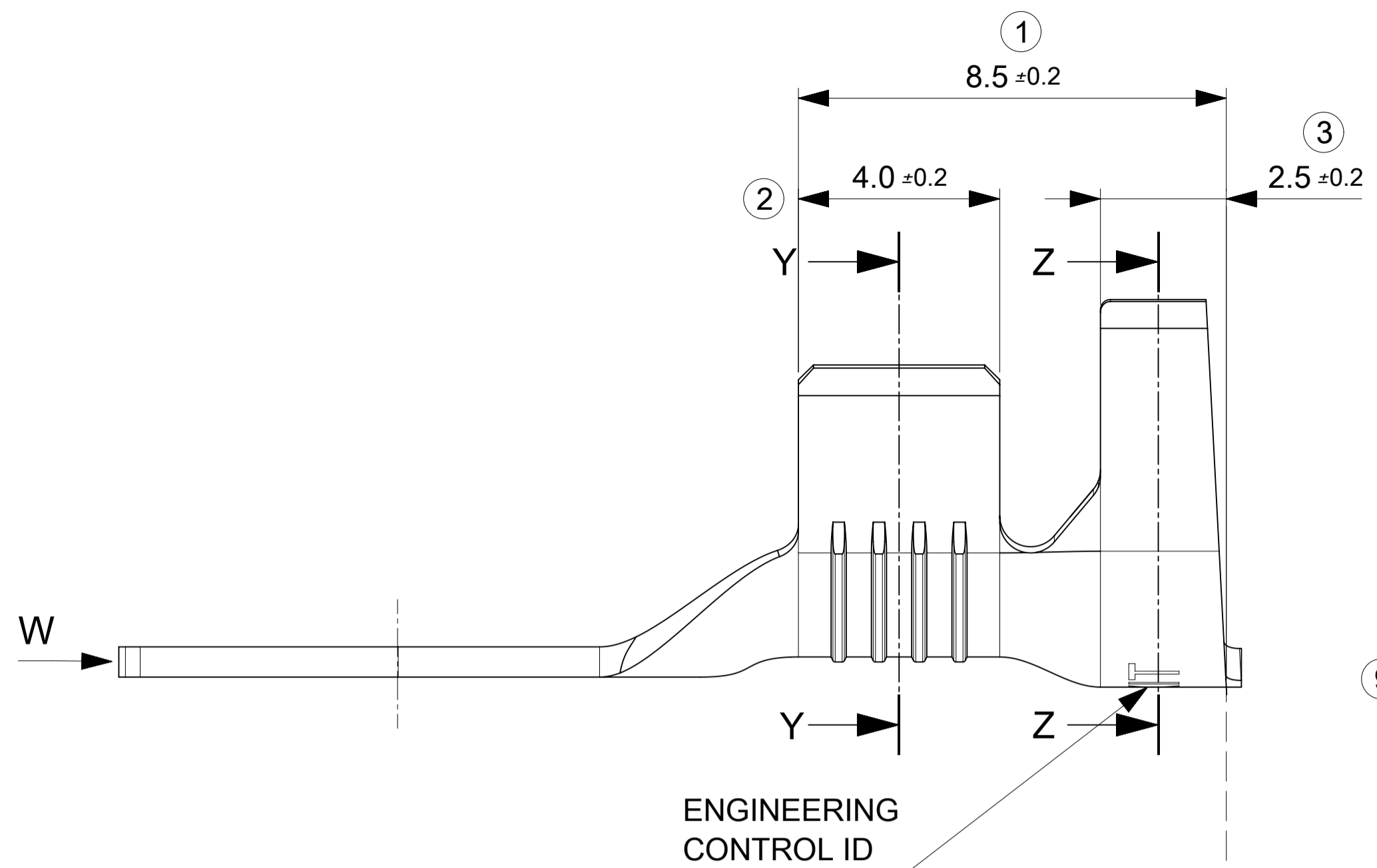
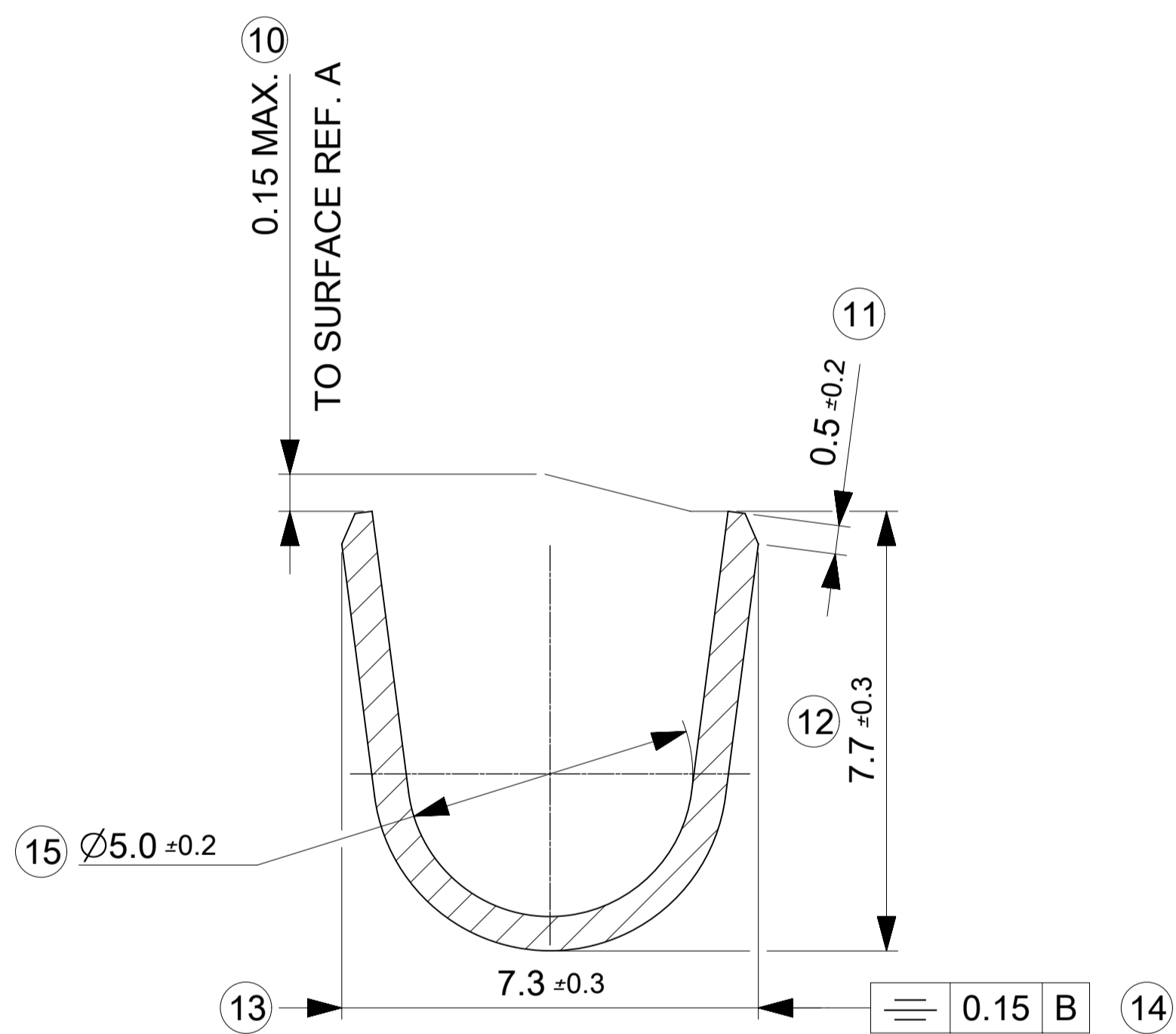
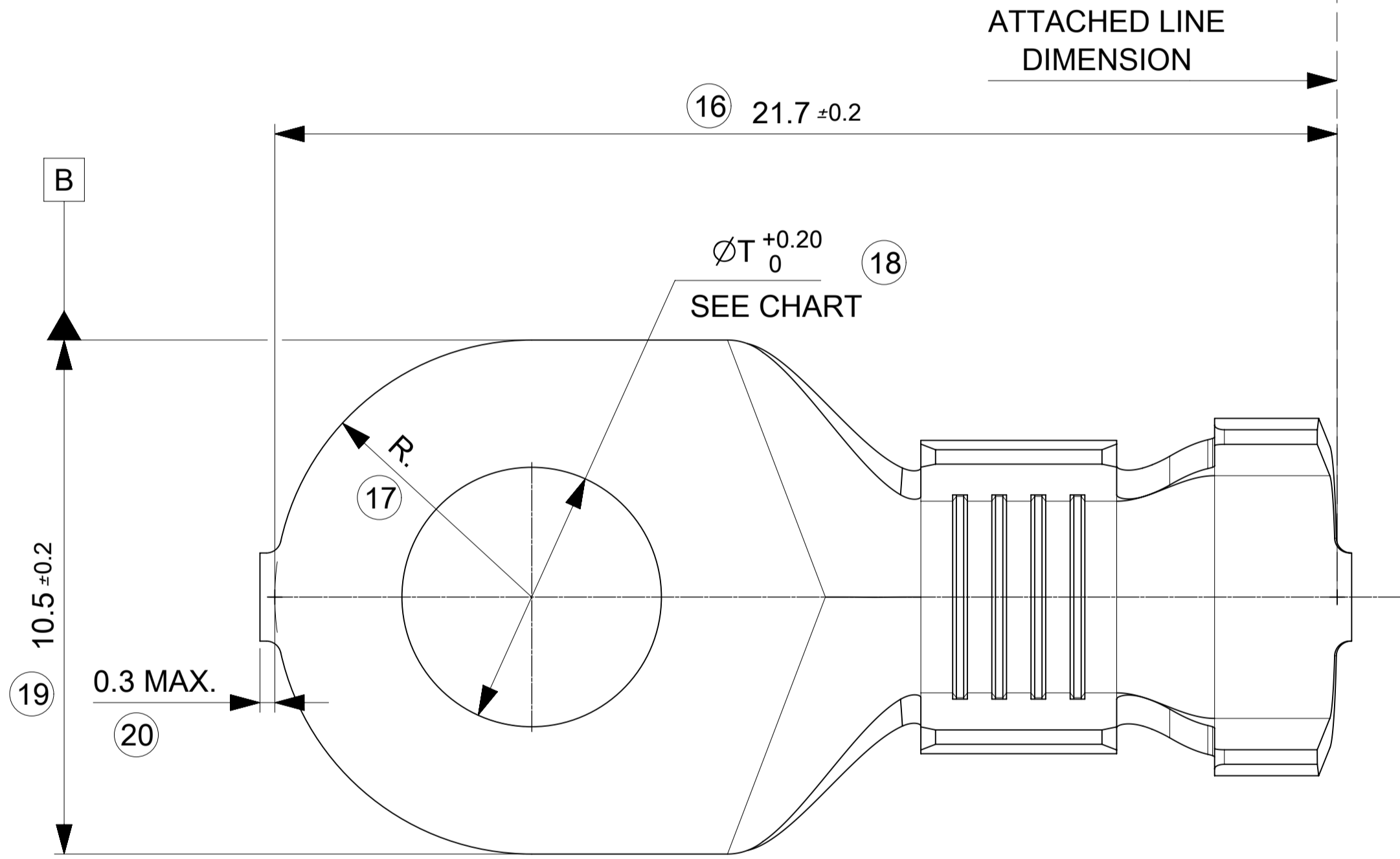


MODIFICATIONS

REV.	DESCRIPTIONS	NAME	DATE
A	-PRINT FIRST RELEASE	GD	2011/12/08
B	-UPDATE PACKAGING : FROM INTERLEAF PAPER TO PAPER STRIP ON LAST LAYER _ ADD PARTS PER REEL : 4000	PBO	2016/10/12
C	OBSOLETE PART NO 988611063	VL	2019/06/24



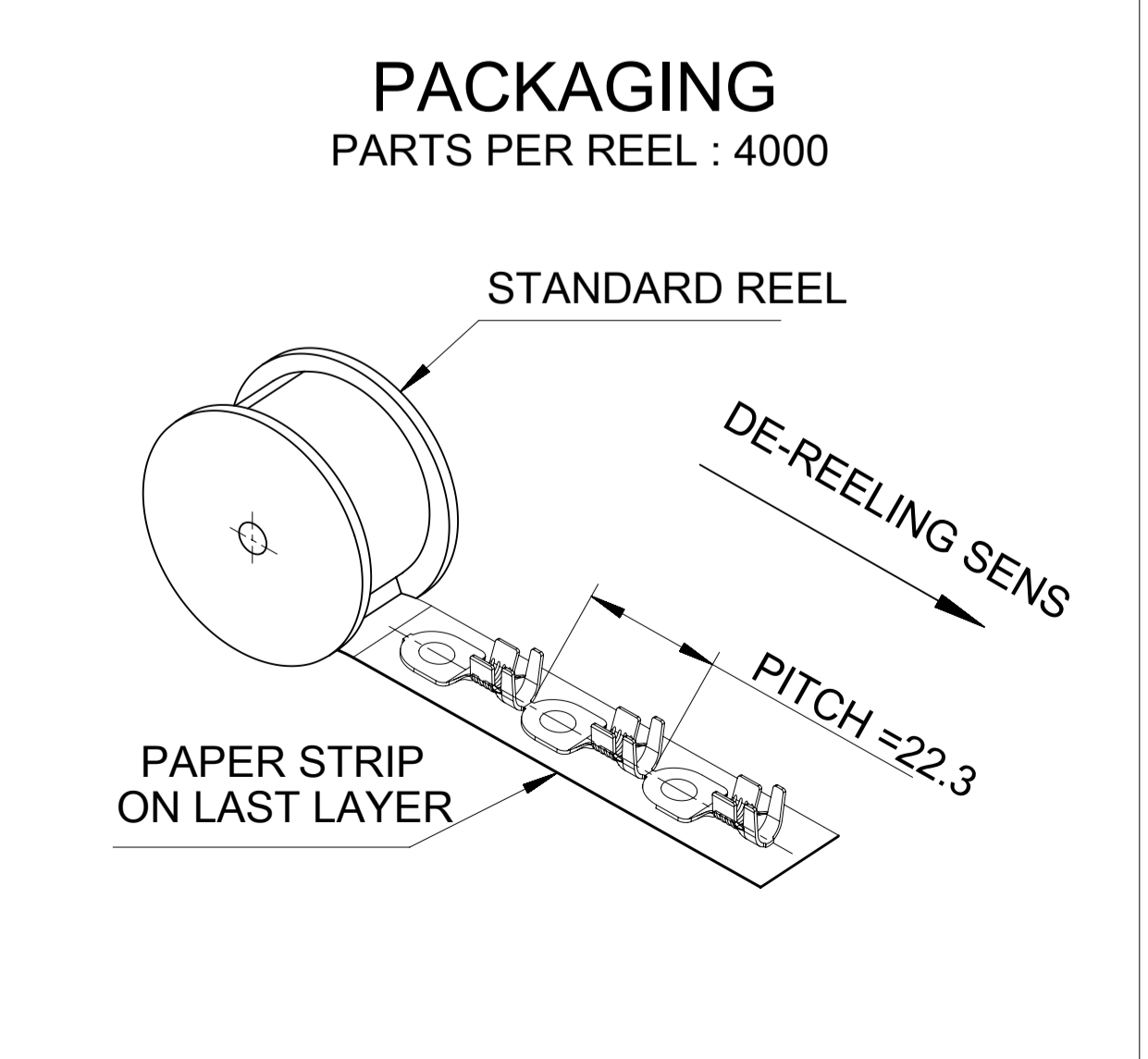
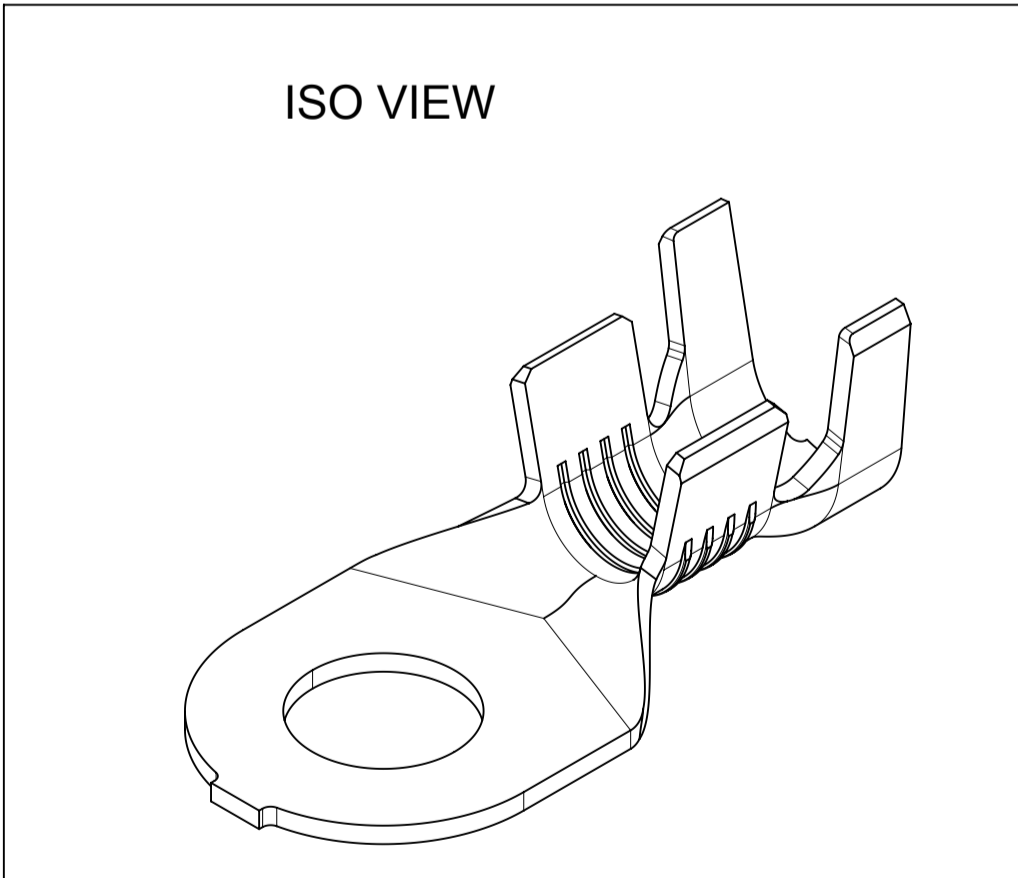
SECTION Y-Y



SECTION Z-Z

MATERIAL:
PRE-TIN PLATED BRASS, THICKNESS: 0.6MM

5,2	0988611053	2,5 TO 7
ØT +0,2 / 0	P/N° / REF.	SECTION (MM²)



THIS DRAWING CONTAINS INFORMATION THAT IS PROPRIETARY TO MOLEX ELECTRONIC TECHNOLOGIES, LLC AND SHOULD NOT BE USED WITHOUT WRITTEN PERMISSION

DIMENSION UNITS: mm	SCALE: 10:1	CURRENT REV DESC:	molex			
GENERAL TOLERANCES (UNLESS SPECIFIED)		EC NO: 624787				RING TERM. 5-6X10.5X0.6
4 PLACES ±	±	DRWN: VLOKESHA 2019/06/24	WIRES 2.5 TO 7MM2 (DELIVERED PRODUCT)			
3 PLACES ±	±	CHK'D: GGA 2019/11/11	PRODUCT CUSTOMER DRAWING			
2 PLACES ±	0.1 ±	APPR: GGA 2019/11/11	DOCUMENT NUMBER	DOC TYPE	DOC PART	REVISION
1 PLACE ±	0.2 ±	INITIAL REVISION:	SD-98861-001	PSD	001	B1
0 PLACES ±	±	DRWN: GDESBRUERES 2011/12/08	MATERIAL NUMBER	CUSTOMER	SHEET NUMBER	
ANGULAR TOL ± 2.0°	±	APPR: OPLESSIS 2011/12/21	SEE CHART	GENERAL MARKET	1 OF 1	
DRAFT WHERE APPLICABLE MUST REMAIN WITHIN DIMENSIONS	FIRST ANGLE PROJECTION	DRAWING SERIES	A1-SIZE	98861		