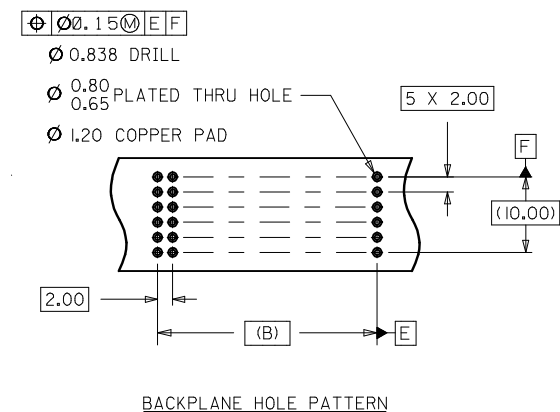
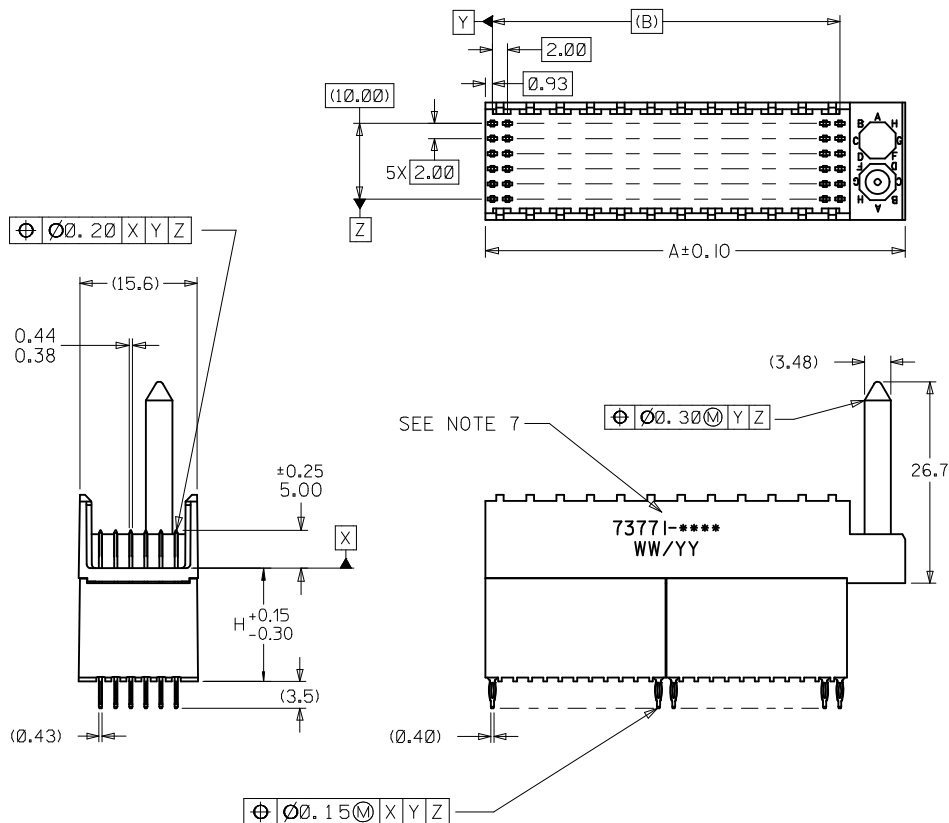


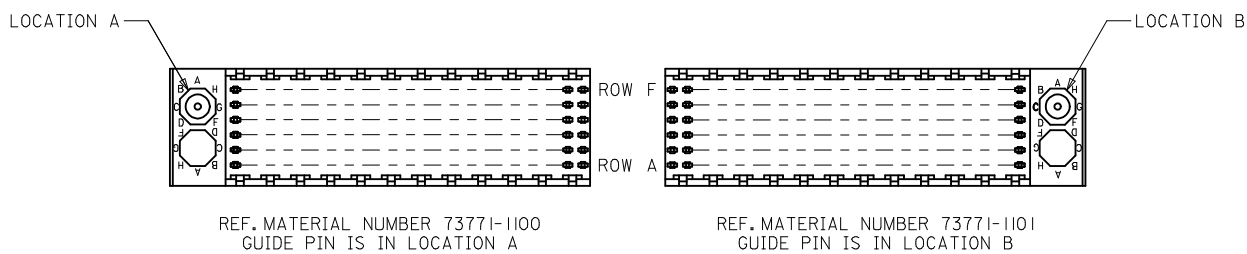
ASSEMBLY P/N	TOTAL NUMBER OF SIGNAL CONTACTS	DIM "A"	DIM "B"	DIM "H"
73771-01**	72	31.6	22.00	15.05
73771-02**	72	31.6	22.00	6.05
73771-03**	72	31.6	22.00	10.05
73771-11**	144	55.6	46.00	15.05
73771-12**	144	55.6	46.00	6.05
73771-13**	144	55.6	46.00	10.05



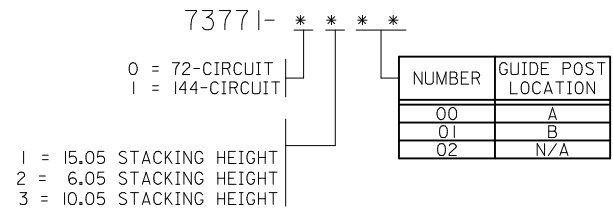
NOTES:

- MATERIALS: HOUSING-LIQUID CRYSTAL POLYMER (LCP), GLASS FILLED, UL 94V-0, COLOR: BLACK, TERMINAL-PHOSPHOR BRONZE
- FINISH: SELECTIVE GOLD (Au) IN CONTACT AREA, 0.00076 mm MINIMUM THICKNESS; SELECTIVE MATTE TIN (Sn) ON TAILS, NICKEL (Ni) OVERALL.
- THIS PART CONFORMS TO MOLEX PRODUCT SPECIFICATION PS-73780-999.
- THIS PART CONFORMS TO COSMETIC SPECIFICATION PS-45499-002 CLASS C.
- RECOMMENDED PCB THICKNESS: 2.50 MIN.
- PACKAGE PER PK-70873-0870, PK-70873-0871 OR PK-70873-0875.
- PART MARKED WITH PART NUMBER AND DATE CODE APPROXIMATELY WHERE SHOWN.

LEAD FREE CONVERSION EC NO: UCP2013-3253 DRAWN:WHIPPLE 2013/02/04 CHKD:MMOLFE 2013/02/04 APPR:SMILLER 2013/08/05	QUALITY SYMBOLS ▽=0 ▽=0 ▽=0	GENERAL TOLERANCES (UNLESS SPECIFIED)		DIMENSION STYLE MM ONLY		SCALE 2:1	DESIGN UNITS METRIC	THIRD ANGLE PROJECTION	
		mm	INCH	DRAWN BY JB INGHAM	DATE 1997/03/07	TITLE SALES ASSEMBLY HDM BACKPLANE STACKING MOD CLOSED END OPT PRESSFIT	DOCUMENT NO. SD-73771-001	SHEET NO. 1 OF 2	
		4 PLACES	± ---	± ---	CHECKED BY SREED	DATE 1997/03/07	<b>molex</b>		
		3 PLACES	± ---	± ---	APPROVED BY CB IXLER	DATE 1997/03/07			
		2 PLACES	± 0.05	± ---	MATERIAL NO. SEE CHART				
		1 PLACE	± 0.10	± ---	SIZE C		THIS DRAWING CONTAINS INFORMATION THAT IS PROPRIETARY TO MOLEX INCORPORATED AND SHOULD NOT BE USED WITHOUT WRITTEN PERMISSION		
		0 PLACE	± ---	± ---	ANGULAR ±1/2°				
		DRAFT WHERE APPLICABLE MUST REMAIN WITHIN DIMENSIONS							

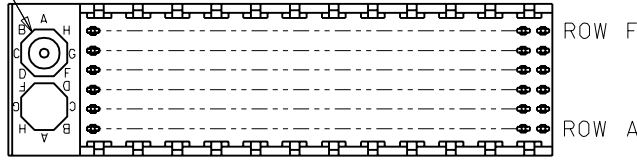


**MATERIAL NUMBER ASSIGNMENT**



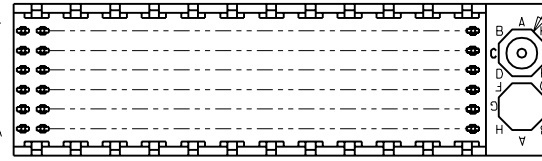
<b>LEAD FREE CONVERSION</b> EC NO: UCP2013-3253 DRWR:RWHIPPLE 2013/02/04 CHKD:HWOLFE 2013/02/04 APPR:SMILLER 2013/08/05	QUALITY SYMBOLS ▽=0 ▽=0 ▽=0	GENERAL TOLERANCES (UNLESS SPECIFIED) <table border="1"> <thead> <tr> <th></th> <th>mm</th> <th>INCH</th> </tr> </thead> <tbody> <tr> <td>4 PLACES</td> <td>± .---</td> <td>± .---</td> </tr> <tr> <td>3 PLACES</td> <td>± .---</td> <td>± .---</td> </tr> <tr> <td>2 PLACES</td> <td>± 0.05</td> <td>± .---</td> </tr> <tr> <td>1 PLACE</td> <td>± 0.10</td> <td>± .---</td> </tr> <tr> <td>0 PLACE</td> <td>± .---</td> <td>± .---</td> </tr> </tbody> </table>		mm	INCH	4 PLACES	± .---	± .---	3 PLACES	± .---	± .---	2 PLACES	± 0.05	± .---	1 PLACE	± 0.10	± .---	0 PLACE	± .---	± .---	DIMENSION STYLE <b>MM ONLY</b> DRAWN BY DATE JB INGHAM 1997/03/07 CHECKED BY DATE SREED 1997/03/07 APPROVED BY DATE CB IXLER 1997/03/07	SCALE <b>1:1</b> DESIGN UNITS <b>METRIC</b> THIRD ANGLE PROJECTION	TITLE <b>SALES ASSEMBLY HDM                  BACKPLANE STACKING MOD                  CLOSED END OPT PRESSFIT</b> <b>molex</b>
		mm	INCH																				
	4 PLACES	± .---	± .---																				
	3 PLACES	± .---	± .---																				
2 PLACES	± 0.05	± .---																					
1 PLACE	± 0.10	± .---																					
0 PLACE	± .---	± .---																					
MATERIAL NO. <b>SEE TABLE</b>	DOCUMENT NO. <b>SD-73771-001</b>	SHEET NO. <b>2 OF 2</b>																					
DRAFT WHERE APPLICABLE MUST REMAIN WITHIN DIMENSIONS	ANGULAR ±1/2°	SIZE THIS DRAWING CONTAINS INFORMATION THAT IS PROPRIETARY TO MOLEX INCORPORATED AND SHOULD NOT BE USED WITHOUT WRITTEN PERMISSION																					
REV <b>H</b>	DESCRIPTION	SIZE	THIS DRAWING CONTAINS INFORMATION THAT IS PROPRIETARY TO MOLEX INCORPORATED AND SHOULD NOT BE USED WITHOUT WRITTEN PERMISSION																				

LOCATION A



REF. MATERIAL NUMBER 73771-1100  
GUIDE PIN IS IN LOCATION A

LOCATION B



REF. MATERIAL NUMBER 73771-1101  
GUIDE PIN IS IN LOCATION B



### MATERIAL NUMBER ASSIGNMENT

73771- \* \* \* \*

0 = 72-CIRCUIT  
1 = 144-CIRCUIT

1 = 15.05 STACKING HEIGHT  
2 = 6.05 STACKING HEIGHT  
3 = 10.05 STACKING HEIGHT

NUMBER	GUIDE POST LOCATION
00	A
01	B
02	N/A

SEE SHEET 1 EC NO. UDT2000-1073 DRWN: BINGHAM 00/05/08 CHK: REED 00/05/08 APPR: BIXLER 00/05/08	QUALITY SYMBOLS MAJOR  = 0 CRITICAL  = 0	GENERAL TOLERANCES: (UNLESS SPECIFIED) mm      INCH		SCALE: NO: NE DESIGN UNITS: <input checked="" type="checkbox"/> mm <input type="checkbox"/> INCH	DIMENSIONS: <input type="checkbox"/> mm <input type="checkbox"/> INCH <input checked="" type="checkbox"/> mm ONLY	SHT    REV REVISION ON CAD ONLY	
		DRAWN BY & DATE JBINGHAM 97/03/07		CHECKED BY & DATE SREED 97/03/07		TITLE: SALES ASSEMBLY HDM BACKPLANE STACKING MODULE POLAR/GUIDE OPTION PRESSFIT	
		APPROVED BY & DATE CBIXLER 97/03/07		CAD FILENAME S73771X2.DGN		MATERIAL NO.    DRAWING NO.    SHEET NO. SEE CHART      SD-73771-001      2	
		DRAFT WHERE APPLICABLE MUST REMAIN WITHIN DIMENSIONS		THIS DRAWING CONTAINS INFORMATION THAT IS PROPRIETARY TO MOLEX INCORPORATED AND SHOULD NOT BE USED WITHOUT WRITTEN PERMISSION.			