



ANATECH ELECTRONICS INC
RF & Microwave Filters & Products

8900-9500 MHz Bandpass Filter

Part Number: AE9200B11384



Electrical Specifications

Passband: 8900-9500 MHz
Passband Insertion Loss: ≤ 0.8 dB
Passband Return Loss: ≥ 18 dB
Rejection 1: ≥ 3 dB @ 8550 MHz
Rejection 2: ≥ 3 dB @ 9650 MHz
Rejection 3: ≥ 90 dB @ 10400-10600 MHz
Power Handling: +56dBm (Avg), +86dBm (Peak)
Input / Output Impedance: 50 Ohms

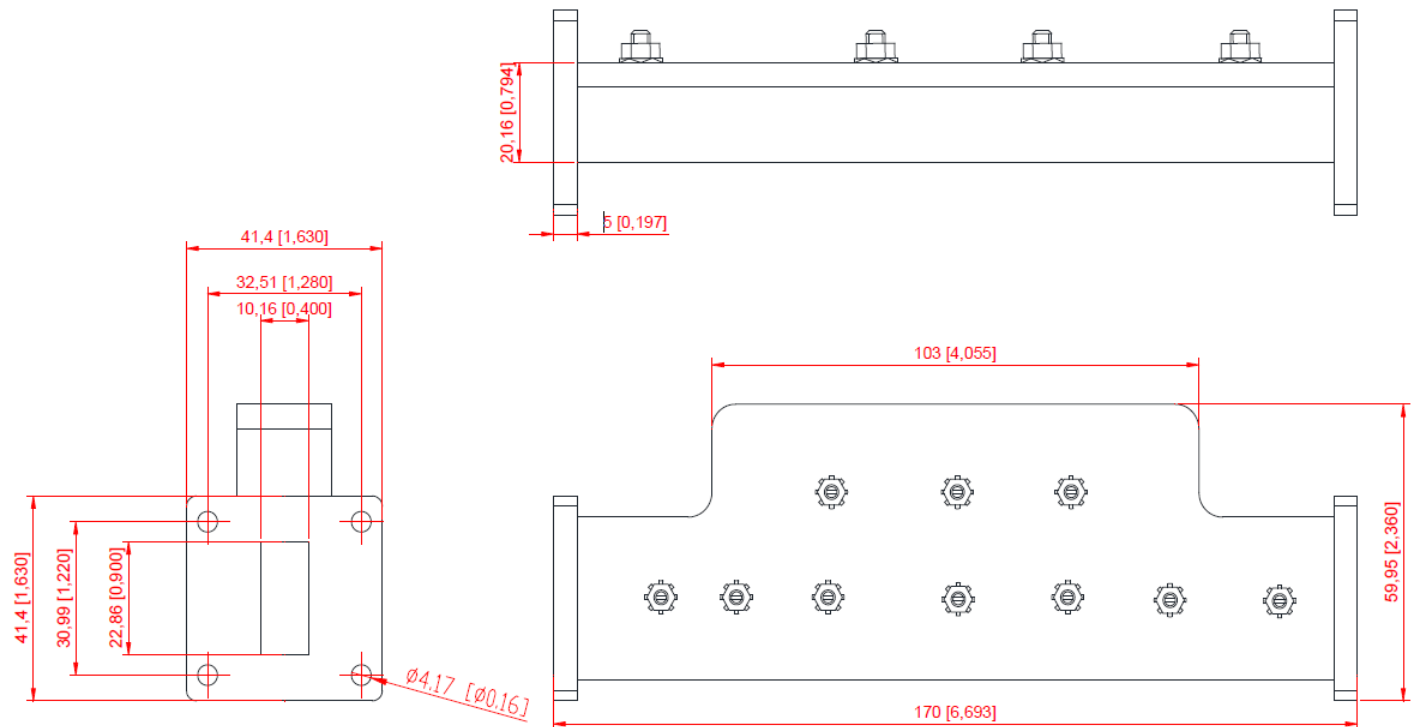
Mechanical

Flange Type: UBR100
Dimensions: 6.693 x 2.360 x 0.99 in

Environmental

Operating Temperature: -45 to +85 deg. C
Storage Temperature: -65 to +95 deg. C
Shock: 20 G's, 10-2000Hz
Vibration: 10 G's, 10-2000Hz
Relative Humidity: 0-95%

Outline Drawing:



Tolerance: +/-0.01 inches [+/-0.3mm]

Angles: +/-1 Deg.

*Tolerance as shown unless otherwise specified in the datasheet electrical specification tables above.

*When max dimensions are called out the above tolerances do not apply as long as it is under the max call out.

Note: For the 0.99 inches Height requirement, this is a Maximum measurement specification.

70 Outwater Lane Phone: (973) 772-4242
Garfield, NJ 07026 Fax : (973) 321-3941

Reference ECN: E072419-01A

Email: sales@anatechelectronics.com
Web: www.anatechelectronics.com



ANATECH ELECTRONICS INC
RF & Microwave Filters & Products

8900-9500 MHz Bandpass Filter

Part Number: AE9200B11384



Response Plot:

