

## A-703 and AH-703 Series, Rated up to 400 Amps, 28 Vdc\*

### Product Facts

- SPST NO, Double break
- Gasket sealed or Hermetically sealed
- Auxiliary contacts available
- Meets many requirements of MIL-PRF-6106



### Performance Data

#### Electrical Characteristics

**Contact Arrangement** —  
SPST NO, Double Break

**Rated Operating Voltage** —  
28 Vdc\* Except for A-703CSM which is  
36/40 Vdc

**Resistive Rating** — 400 Amps

**Resistive for 30 sec** — 1,000 Amps

**Inrush Rating** — 1,500 Amps

#### General Characteristics

**Temperature Range** —  
-55°C to +71°C

**Operating Cycles (Life) at Rated  
Resistive Load, Min.** — 50,000  
cycles

**Operating Cycles (Life)  
Mechanical, Min.** — 100,000 cycles

**Dielectric Strength** —  
All Circuits to Ground — 1,250 Vrms  
Circuit to Circuit — 1,250 Vrms  
Coil to Ground and Aux. Contacts —  
1,000 Vrms

**Weight** — 2.12 to 2.88 lbs

**Pickup Time, @ Nom. Voltage,  
Max.** — 35 msec

**Dropout Time, @ Nom. Voltage,  
Max.** — 35 msec

**Bounce Time, @ Nom. Voltage,  
Max.** — .004 msec

#### Coil Characteristics

**Duty Cycle** —  
Intermittent (Type A, See diagram  
below), Intermittent with suppression  
(Type B, See diagram below),  
Continuous, economized (Type C,  
See diagram below) or Continuous,  
economized with suppression (Type D,  
See diagram below)

**Operating Voltage** —  
28 Vdc Nominal

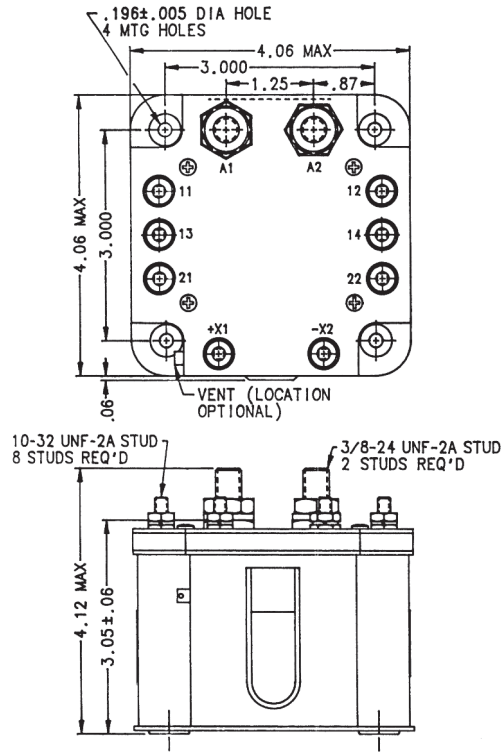
**Pickup Voltage @ 25°C, Max.** —  
A-703B — 8 Vdc  
A-703DBH — 10 Vdc  
A-703, A-703CD, A-703CSM, A-703D,  
A-703FA, A-703FB, A-703FSS,  
A-703ZS — 12 Vdc  
A-703T — 13 Vdc  
AH-703F, A-703E, A-703G-1, A-703GC,  
A-703GS, A-703R, AH-703F — 16 Vdc

#### Dropout Voltage

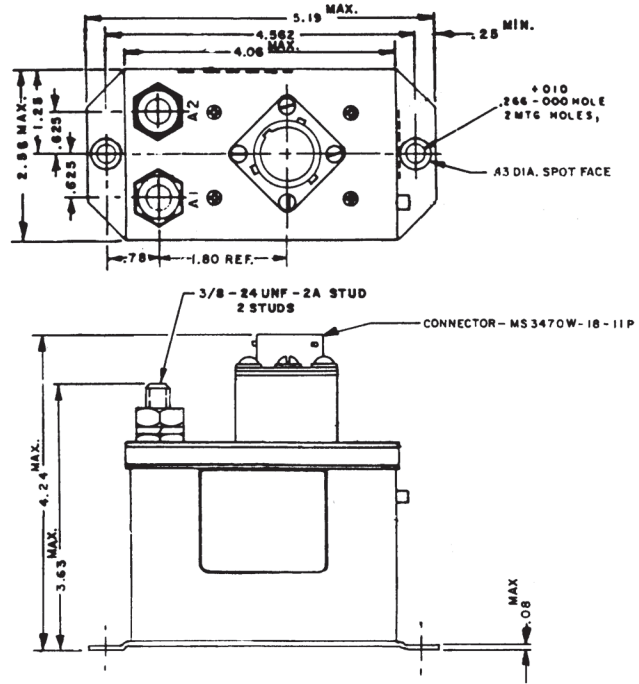
A-703B — 0.5 to 3 Vdc  
A-703CD, A-703FA, A-703FB —  
0.5 to 5 Vdc  
A-703T — 0.5 to 6 Vdc  
A-703, A-703CSM, A-703D, A-703FSS,  
A-703ZS — 0.5 to 7 Vdc  
A-703DBH, A-703E, A-703R —  
1.0 to 7 Vdc  
AH-703F, A-703G-1, A-703GC, A-  
703GS, AH-703F — 1.5 to 7 Vdc

For factory-direct application  
assistance, phone 419-521-9500 or  
fax 419-526-2749.

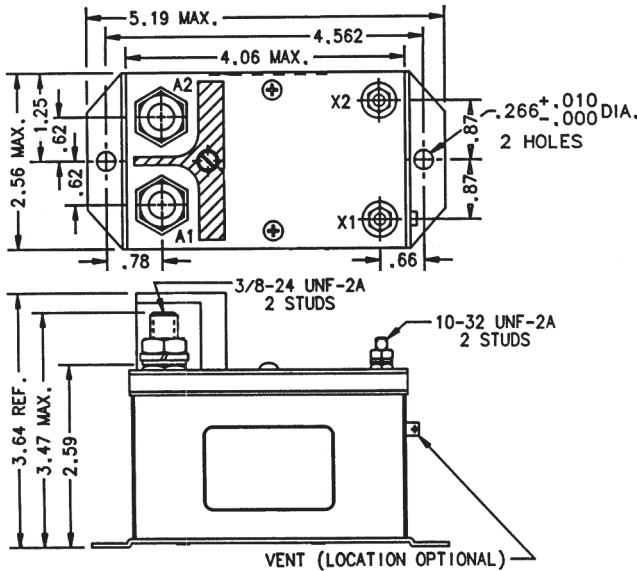
**A-703 and AH-703 Series, Rated up to 400 Amps, 28 Vdc** (Continued)



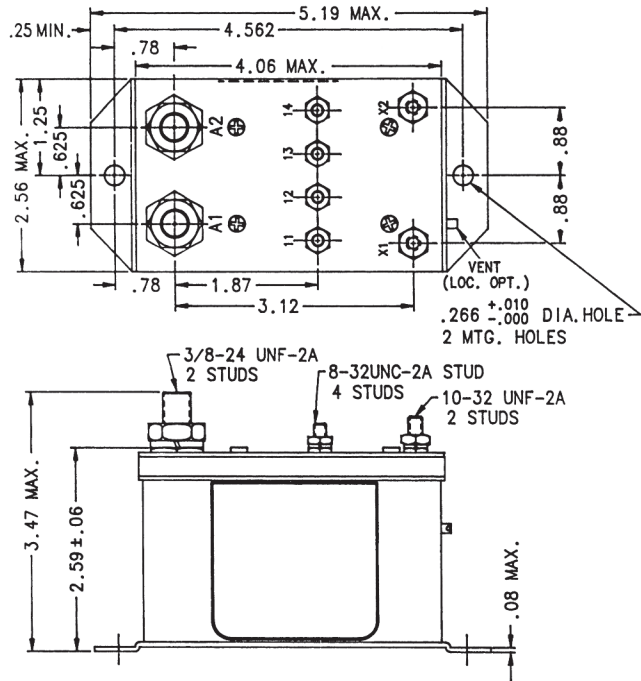
Mounting Style A



Mounting Style B



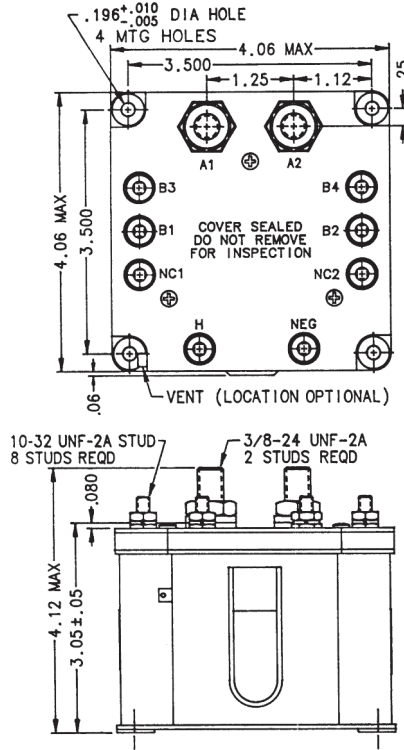
Mounting Style C



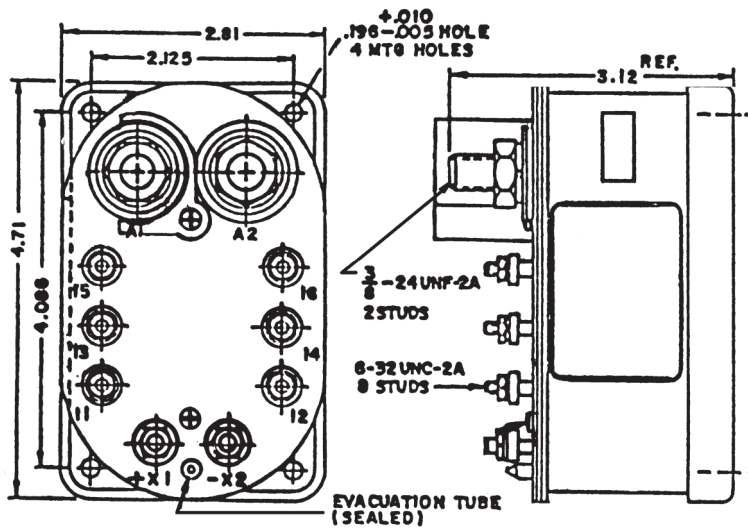
Mounting Style D

For factory-direct application assistance, phone 419-521-9500 or fax 419-526-2749.

**A-703 and AH-703 Series, Rated up to 400 Amps, 28 Vdc (Continued)**



Mounting Style E

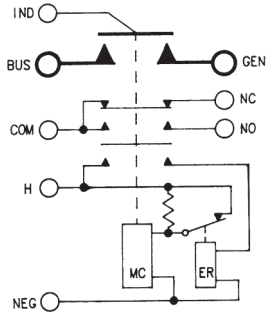


Mounting Style F

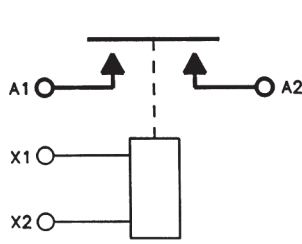
For factory-direct application assistance, phone 419-521-9500 or fax 419-526-2749.

**A-703 and AH-703 Series, Rated up to 400 Amps, 28 Vdc (Continued)**

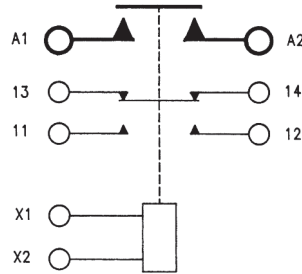
**Circuit Configurations** (Consult factory for other available circuit configurations)



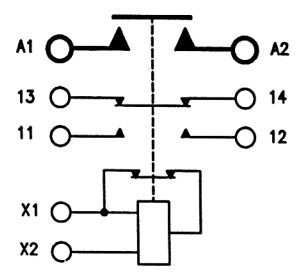
**Circuit Configuration 1**



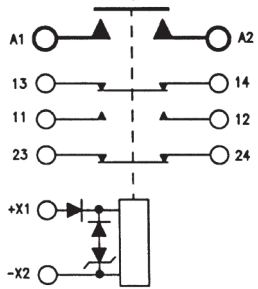
**Circuit Configuration 2**



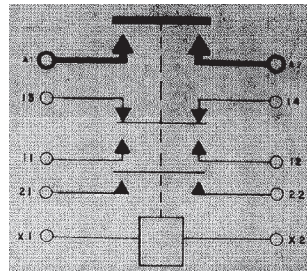
**Circuit Configuration 3**



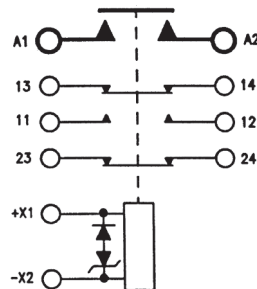
**Circuit Configuration 4**



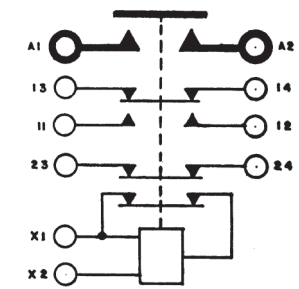
**Circuit Configuration 5**



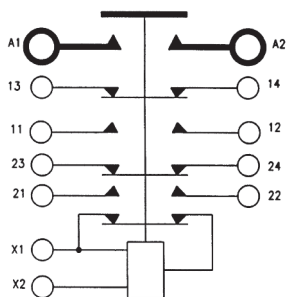
**Circuit Configuration 6**



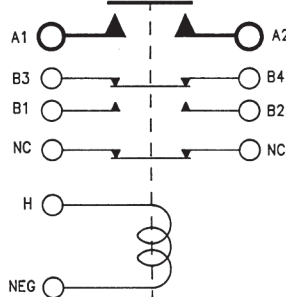
**Circuit Configuration 7**



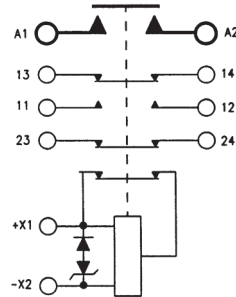
**Circuit Configuration 8**



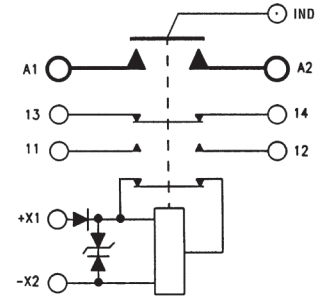
**Circuit Configuration 9**



**Circuit Configuration 10**



**Circuit Configuration 11**

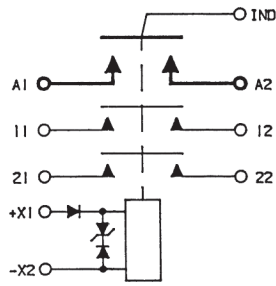


**Circuit Configuration 12**

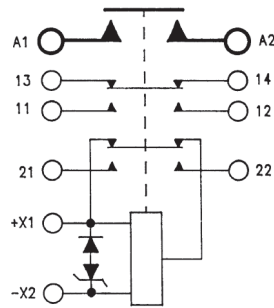
For factory-direct application assistance, phone 419-521-9500 or fax 419-526-2749.

**A-703 and AH-703 Series, Rated up to 400 Amps, 28 Vdc** (Continued)

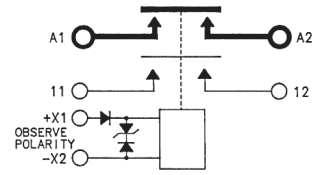
**Circuit Configurations** (Consult factory for other available circuit configurations)



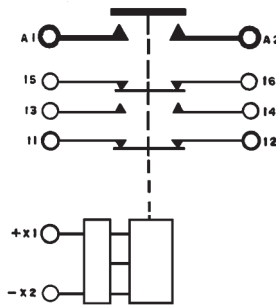
Circuit Configuration 13



Circuit Configuration 14



Circuit Configuration 15



Circuit Configuration 16

HARTMAN Part Number	Construction Type	Mounting Style	Coil Type	Circuit Config.	TE Part Number
A-703	Gasket/Vented	A	Continuous, Economized	1	1616058-1
A-703CD	Gasket/Vented	C	Intermittent	2	1616058-6
A-703CSM	Gasket/Vented	D	Intermittent	15	1616058-7
A-703D	Gasket/Vented	D	Intermittent	3	1616058-8
A-703DBH	Gasket/Vented	D	Intermittent	3	1-1616058-0
A-703E	Gasket/Vented	D	Continuous, Economized	4	1-1616058-1
A-703FA	Gasket/Vented	D	Intermittent w/Supp.	5	1-1616058-2
A-703FB	Gasket/Vented	D	Intermittent	6	1-1616058-3
A-703FSS	Gasket/Vented	D	Intermittent w/Supp.	7	1-1616058-4
A-703G-1	Gasket/Vented	D	Continuous, Economized	8	1-1616058-5
A-703GC	Gasket/Vented	D	Continuous, Economized	19	1-1616058-6
A-703B	Gasket/Vented	E	Intermittent	10	1616058-3
A-703GS	Gasket/Vented	D	Continuous, Economized w/Supp.	11	1-1616058-7
A-703R	Gasket/Vented	D	Continuous, Economized w/Supp.	12	1-1616058-9
A-703T	Gasket/Vented	D	Intermittent w/Supp.	13	2-1616058-0
A-703ZS	Gasket/Vented	A	Continuous, Economized w/Supp.	14	2-1616058-2
AH-703F	Hermetically Sealed	F	Continuous, Economized w/Supp.	16	1616061-1

For factory-direct application assistance, phone 419-521-9500 or fax 419-526-2749.