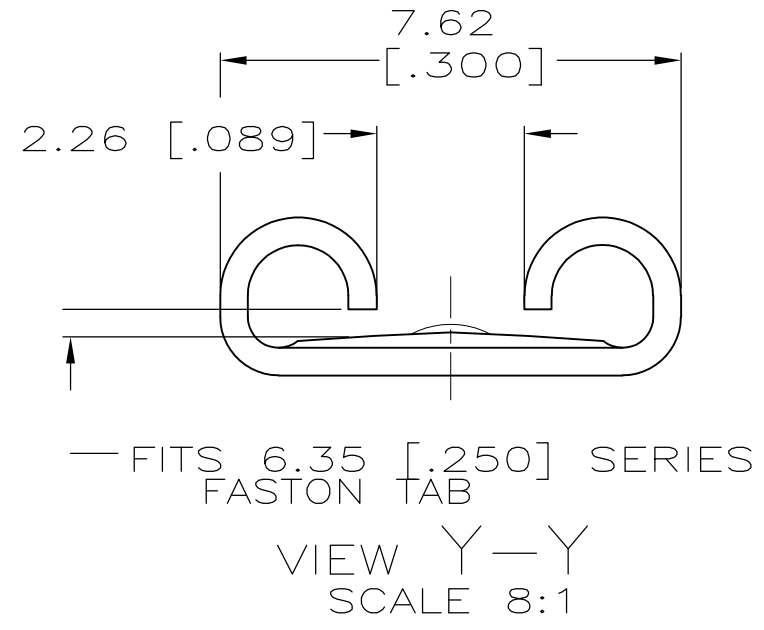
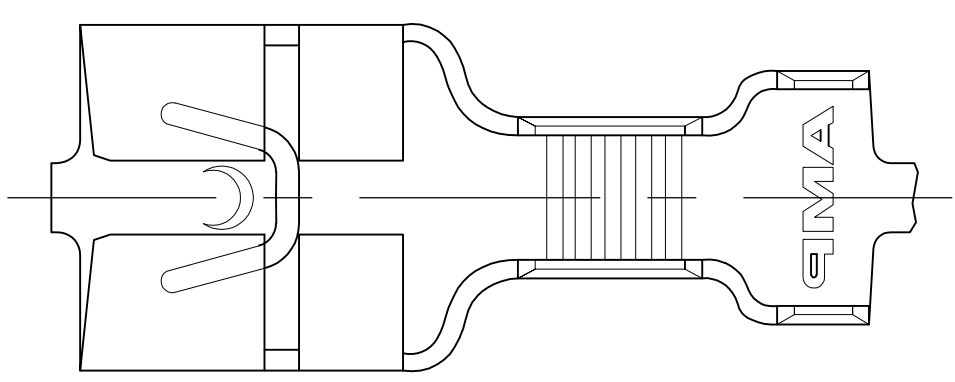
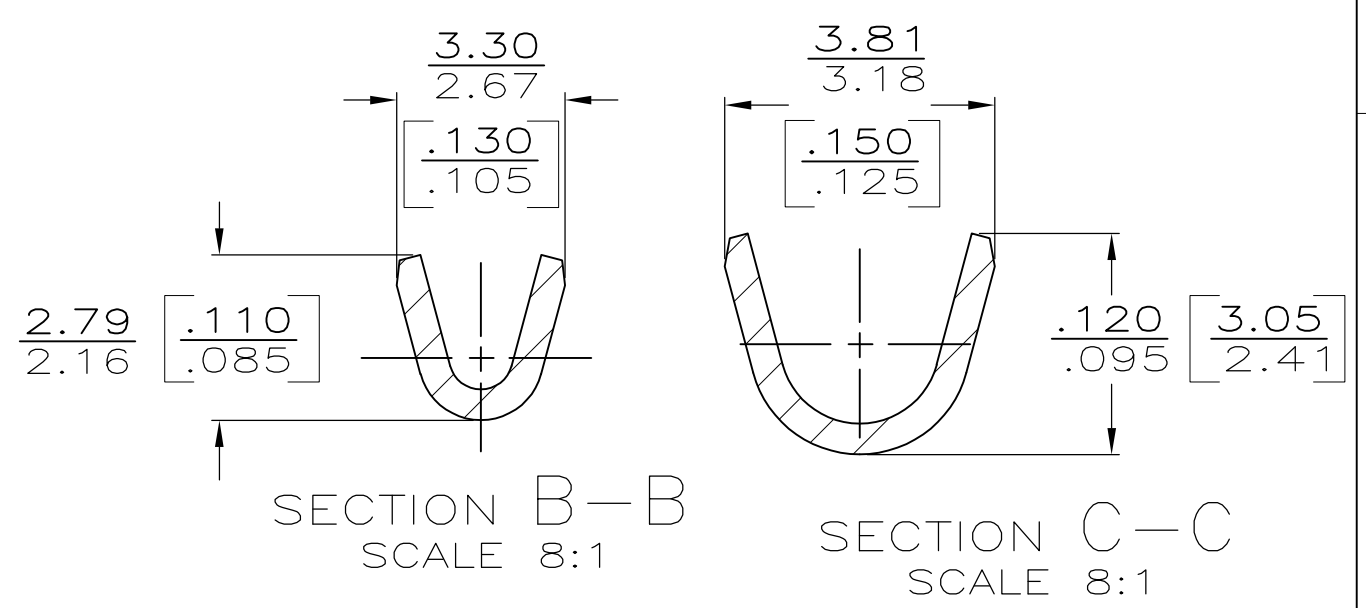
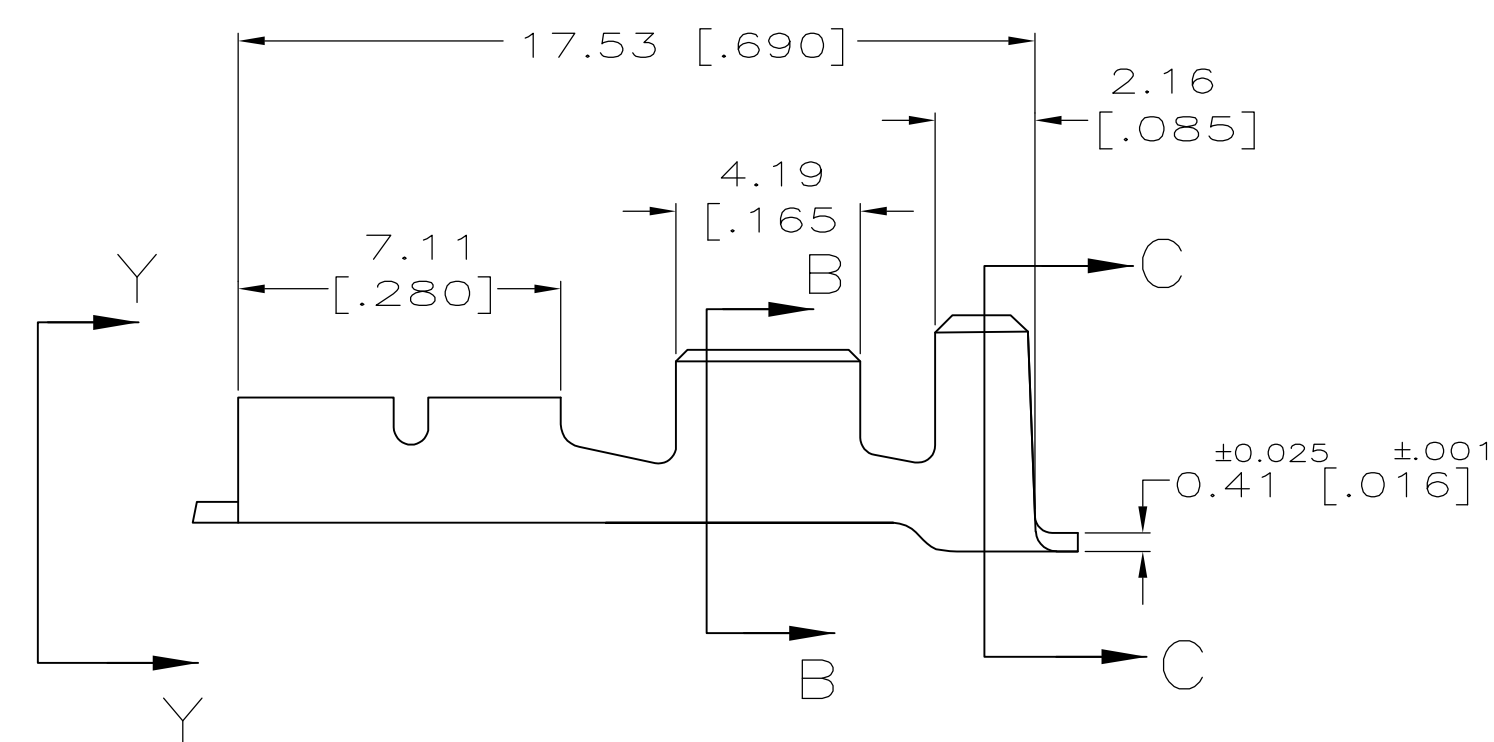


THIS DRAWING IS UNPUBLISHED. RELEASED FOR PUBLICATION
 © COPYRIGHT - By TYCO ELECTRONICS CORPORATION. ALL RIGHTS RESERVED.

LOC	DIST	REVISIONS					
AF	50	P	LTR	DESCRIPTION	DATE	DWN	APVD
		D		REVISE PER ECR-13-013738	15FEB2014	GRZ	JL



- CONTINUOUS STRIP ON REELS
- MATING TAB THK TO BE 0.51±0.025 [.020±.001].
- WIRE SIZE IS #24-#19 MAGNET WIRE.
- INSULATION RANGE IS 1.27-2.03 [.050-.080] DIA.



0.002032 [.000080] MIN TIN	63623-2
-	63623-1
FINISH	PART NUMBER

F	2.79 [.110]	F	2.29 [.090]	1.19 [.047]	0.6mm ² [19]
				1.14 [.045]	0.5mm ² [20]
				1.07 [.042]	0.3mm ² [22]
				1.04 [.041]	0.2mm ² [24]
TYPE	WIDTH	TYPE	WIDTH	±.002 HEIGHT	WIRE
INSUL BARREL CRIMP		WIRE BARREL CRIMP			

THIS DRAWING IS A CONTROLLED DOCUMENT.

DIMENSIONS: INCHES

TOLERANCES UNLESS OTHERWISE SPECIFIED:

0 PLC	± -
1 PLC	± -
2 PLC	± -
3 PLC	± 0.25 [.010]
4 PLC ANGLES	± -

MATERIAL: H04 BRASS

FINISH: SEE TABLE

DWN: JR RUTH 8/23/91

CHK: MS FEHER 8/23/91

APVD: C MEYERS 8/23/91

PRODUCT SPEC: R KUZO 8/23/91

APPLICATION SPEC: -

WEIGHT: -

CUSTOMER DRAWING

STE TE Connectivity

RECEPTACLE, FASTON, L.I.F., AMPLIVAR, 6.35 [.250] SERIES

SIZE: A3 CAGE CODE: 00779 DRAWING NO: C-63623 RESTRICTED TO: -

SCALE: 6:1 SHEET: 1 OF 1 REV: D