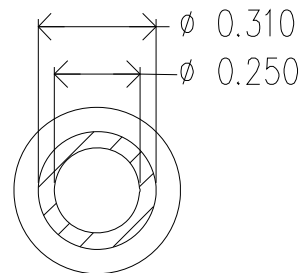
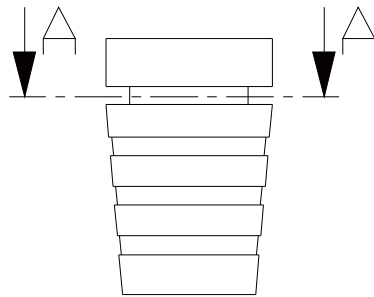
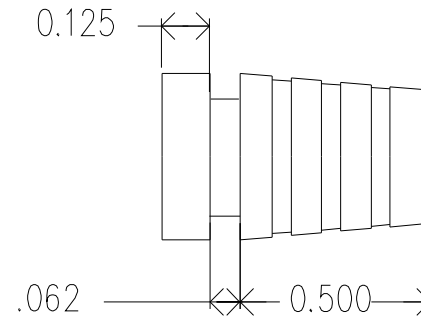
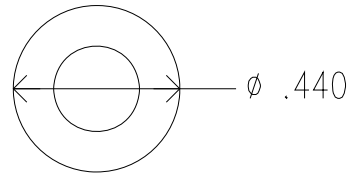
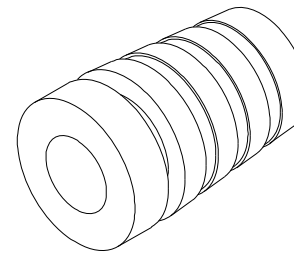


REVISIONS			DATE	APPROVED
ZONE	REV.	DESCRIPTION		



A-A



MOLD MATERIAL: ISC P/N: 5000214, PVC, M1472, RoHS, Bk

DIMENSIONS ARE IN INCHES		NAME	DATE	ISC Engineering 4351 Schaefer Ave, Chino, CA 91710 Ph: 909-596-3315 Fax: 909-596-3335 www.iscengineering.com www.overmoldtooling.com	
TOLERANCES:		DRAWN	R FIERRO		02/05/04
FRACTIONAL ±		CHECKED			
ANGULAR: MACH ±		ENG APPR.			
BEND ±		MFG APPR.			
TWO PLACE DECIMAL ±		Q.A.			
THREE PLACE DECIMAL ±		COMMENTS:			
MATERIAL		---		1461040-250-B-310-440-0	
FINISH		---		SIZE A DWG. NO. 1460054 REV.	
NEXT ASSY	USED ON			SCALE: 2:1 WEIGHT: SHEET 1 OF 1	
APPLICATION		DO NOT SCALE DRAWING			

Dimensions are subject to change.  
 PROPRIETARY AND CONFIDENTIAL  
 THE INFORMATION CONTAINED IN THIS DRAWING IS THE SOLE PROPERTY OF ISC ENGINEERING. ANY REPRODUCTION IN PART OR AS A WHOLE WITHOUT THE WRITTEN PERMISSION OF ISC ENGINEERING IS PROHIBITED.

