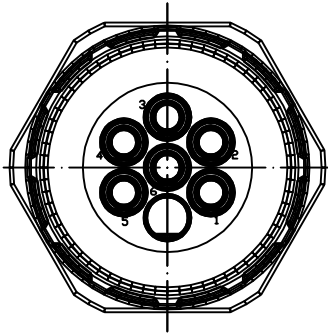
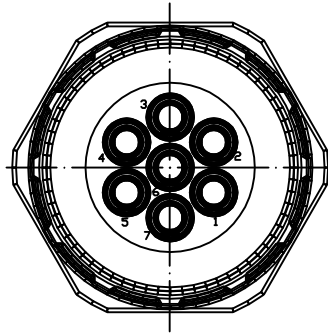


Views from "X" rotated

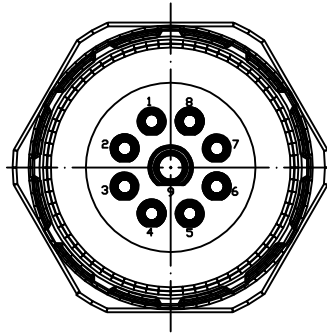
6-Pole



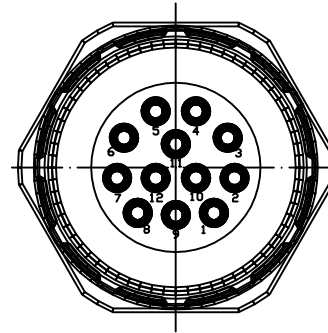
7-Pole



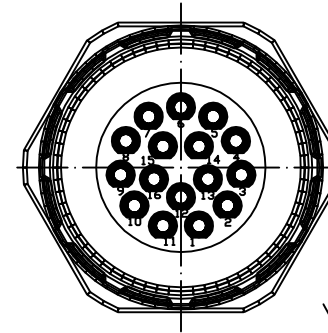
9-Pole
(8+1)



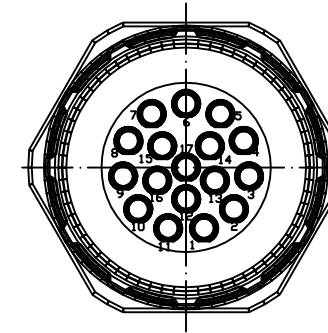
12-Pole



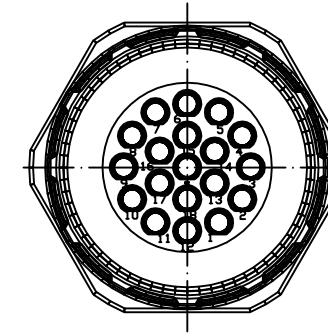
16-Pole



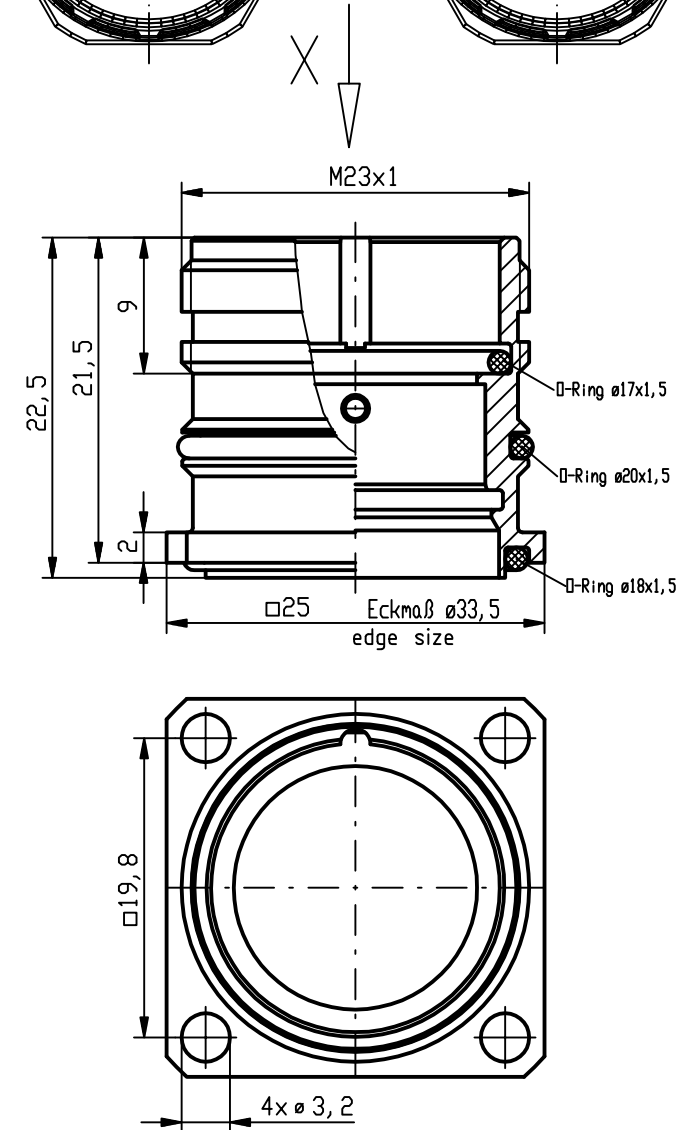
17-Pole



19-Pole
(16+3)



Cable Diameter	Solder Contacts	Crimp Contacts	Without Contacts
6 Pole	KRS6G26-5531 1202310022	KRS6G26-4031 1202310023	KRS6G26-0031 1202310024
	Crimp range*	0,75-2,5mm ²	
7 Pole	KRS7G26-5531 1202310025	KRS7G26-4031 1202310026	KRS7G26-0031 1202310027
	Crimp range*	0,75-2,5mm ²	
9 Pole (8+1)	KRS9G26-5531 1202310028	KRS9G26-4131 1202310029	KRS9G26-0031 1202310030
	Crimp range*	0,14-1,0mm ² /0,75-2,5mm ²	
12 Pole	KRSCG26-5531 1202310031	KRSCG26-0131 1202310032	KRSCG26-0031 1202310033
	Crimp range*	0,14-1,0mm ²	
16 Pole	KRSHG26-5531 1202310034	KRSHG26-0131 1202310035	KRSHG26-0031 1202310036
	Crimp range*	0,14-1,0mm ²	
17 Pole	KRSJG26-5531 1202310037	KRSJG26-0131 1202310038	KRSJG26-0031 1202310039
	Crimp range*	0,14-1,0mm ²	
19 Pole (16+3)	KRSLG26-5531 1202310040	KRSLG26-1131 1202310041	KRSLG26-0031 1202310042
	Crimp range*	0,14-1,0mm ² /0,14-1,0mm ²	



Notes:

Tolerances (unless specified): DIN ISO 2768 m

*Crimp range only applies to "Crimp Contacts" version

DESCRIPTION EC NO.: WEU2009-0135 DRWN: BBRAUCH 2008/11/14 CH'KD: --- APPR: JKOLB 2009/03/02	QUALITY SYMBOLS ▽ = 0 ▽C = 0	GENERAL TOLERANCES (UNLESS SPECIFIED) mm INCH 4 PLACES ±---- ±---- 3 PLACES ±---- ±---- 2 PLACES ±0.05 ±---- 1 PLACE ±0.1 ±---- ANGULAR ± --- °	DIMENSION STYLE MM DRAWN BY DATE BB 2008/11/14 CHECKED BY DATE JKO 2008/12/09 APPROVED BY DATE --- ---	SCALE --- DESIGN UNITS METRIC FIRST ANGLE PROJECTION
	DRAFT WHERE APPLICABLE MUST REMAIN WITHIN DIMENSIONS	MATERIAL NO. see table	DOCUMENT NO. SD-120231-002	SHEET NO. 1 OF 1

MOLEX INCORPORATED

M23 FRONT PM RECEPT. MALE FLANGE-MOUNT 4 X DIA 3.2MM

THIS DRAWING CONTAINS INFORMATION THAT IS PROPRIETARY TO MOLEX INCORPORATED AND SHOULD NOT BE USED WITHOUT WRITTEN PERMISSION