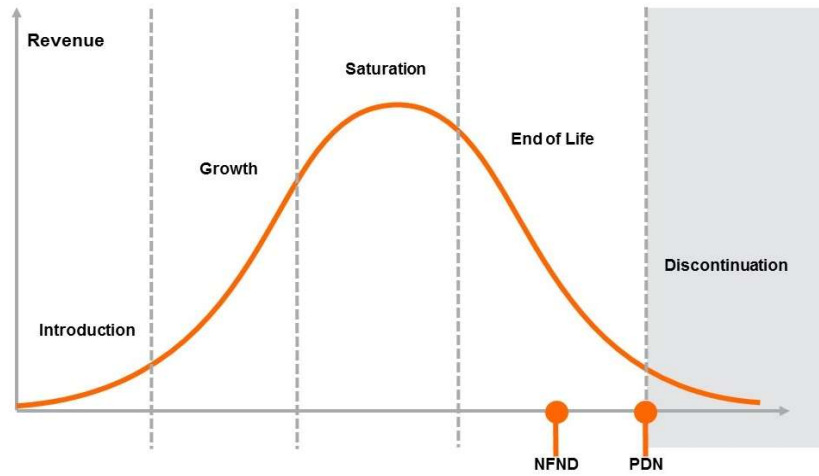


Light is OSRAM

Product Or Individual Q-Code Discontinuation (acc. JEDEC J-STD-048)
OS-PDN-2020-071

15 October 2020

Last order:	15 April 2021
Last delivery:	15 October 2021



Please direct your feedback to your local Sales office.

DISCONTINUED				NEW (REPLACEMENT)		
Device	Ordering Code	Brand	Reason for discontinuation	Device	Datasheet Ordering Code	Brand
LO M67K-K1-34-0-2-R18-Z-BP	Q65110A3668	Mini TOPLED	Brightness increase – dim selections need to be phased-out	LO M67K-K2M1-24-0-2-R18-Z	Q65113A2201	Mini TOPLED
LO M67K-J2K2-34-0-2-R18-Z	Q65110A4473	Mini TOPLED	Brightness increase – dim selections need to be phased-out	LO M67K-K2M1-24-0-2-R18-Z	Q65113A2201	Mini TOPLED
LO M67K-J2K2-24-0-2-R18-Z	Q65110A4816	Mini TOPLED	Brightness increase – dim selections need to be phased-out	LO M67K-K2M1-24-0-2-R18-Z	Q65113A2201	Mini TOPLED
LO M67K-K2-34-0-2-R18-Z-XX	Q65110A7543	Mini TOPLED	Brightness increase – dim selections need to be phased-out	LO M67K-K2M1-24-0-2-R18-Z	Q65113A2201	Mini TOPLED
LO M67K-K2-3-0-2-R18-Z-BP	Q65110A7816	Mini TOPLED	Brightness increase – dim selections need to be phased-out	LO M67K-K2M1-24-0-2-R18-Z	Q65113A2201	Mini TOPLED
LO M67K-K2-34-0-2-R18-Z-BP	Q65110A3669	Mini TOPLED	Brightness increase – dim selections need to be phased-out	LO M67K-K2M1-24-0-2-R18-Z	Q65113A2201	Mini TOPLED
LO M67K-J2K2-34-0-2-R18-Z-PRE	Q65111A8502	Mini TOPLED	Brightness increase – dim selections need to be phased-out	LO M67K-K2M1-24-0-2-R18-Z	Q65113A2201	Mini TOPLED

Products Affected by Product Discontinuation Notification

Number: OS-PDN-2020-071

Name: Product Discontinuation of Dim Selections

Release Date: 10/15/2020

Last Order: 4/15/2021

Last Delivery: 10/15/2021

DISCONTINUED

NEW (REPLACEMENT)

<i>Product</i>	<i>QNumber</i>	<i>QNumber Description</i>	<i>Part Number</i>	<i>Product</i>	<i>QNumber</i>	<i>QNumber Description</i>	<i>Part Number</i>
LO M67K	Q65110A3668	LO M67K-K1-34-0-2-R18-Z-BP	LO M67K-K1-34-Z	LO M67K	Q65113A2201	LO M67K-K2M1-24-0-2-R18-Z	
LO M67K	Q65110A3669	LO M67K-K2-34-0-2-R18-Z-BP	LO M67K-K2-34-Z	LO M67K	Q65113A2201	LO M67K-K2M1-24-0-2-R18-Z	
LO M67K	Q65110A4473	LO M67K-J2K2-34-0-2-R18-Z	LO M67K-J2K2-34-Z	LO M67K	Q65113A2201	LO M67K-K2M1-24-0-2-R18-Z	
LO M67K	Q65110A4816	LO M67K-J2K2-24-0-2-R18-Z	LO M67K-J2K2-24-Z	LO M67K	Q65113A2201	LO M67K-K2M1-24-0-2-R18-Z	
LO M67K	Q65110A7543	LO M67K-K2-34-0-2-R18-Z-XX	LO M67K-K2-34-Z-XX	LO M67K	Q65113A2201	LO M67K-K2M1-24-0-2-R18-Z	
LO M67K	Q65110A7816	LO M67K-K2-3-0-2-R18-Z-BP	LO M67K-K2-3-Z-BP	LO M67K	Q65113A2201	LO M67K-K2M1-24-0-2-R18-Z	
LO M67K	Q65111A8502	LO M67K-J2K2-34-0-2-R18-Z-PRE	LO M67K-J2K2-34-PRE	LO M67K	Q65113A2201	LO M67K-K2M1-24-0-2-R18-Z	