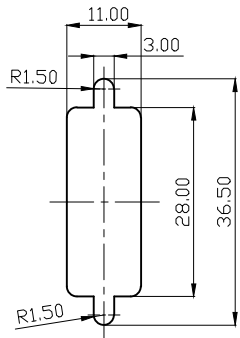
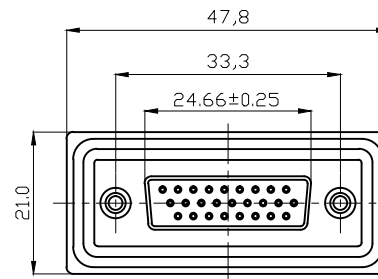
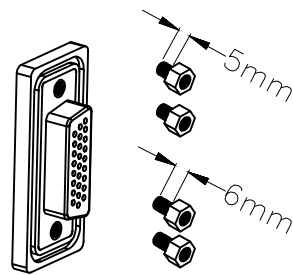
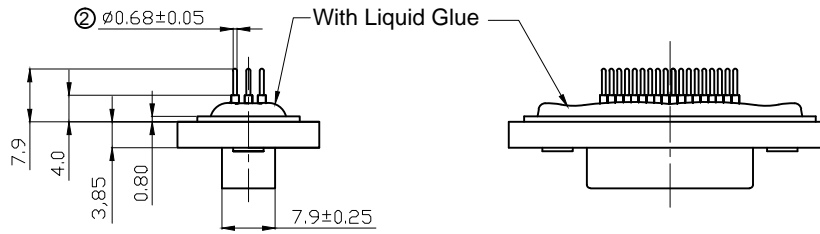


Panel Thickness  
Screw L=5.0 For Panel Thickness Under 1.2mm  
Screw L=6.0 For Panel Thickness Between 1.2-2.0mm



Recommended Panel Cut-Out



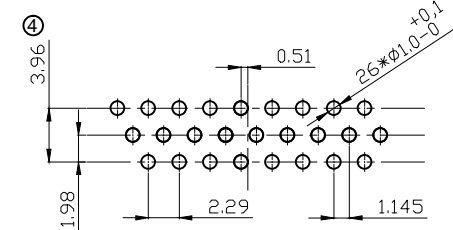
**NOTES:**

**MATERIAL**

1. Insulator Material: Black, NYLON+G/F UL94V-0 ②
2. Contact Material: Copper Alloy
- ③ 3. Plating: 1u" Gold Plating
4. Waterproof Rate: IP67
5. Do Mating Test After Glued

② **Electrical**

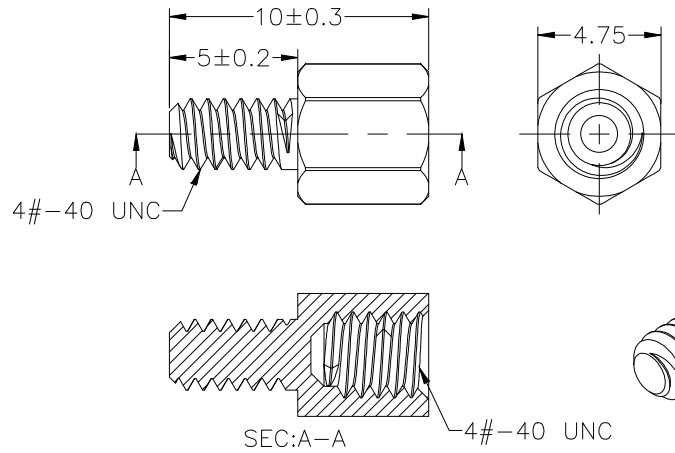
1. Contact resistance: 20mΩ max.
2. Insulation resistance: 500MΩ min. at DC500V
3. Dielectric withstanding voltage: 500V AC  
1 minute
4. Rating current: 5A
5. Durability: 500 cycles
6. Temperature range: -20°C ~ +85°C
7. Wave soldering temp.: +220°C 10s max.



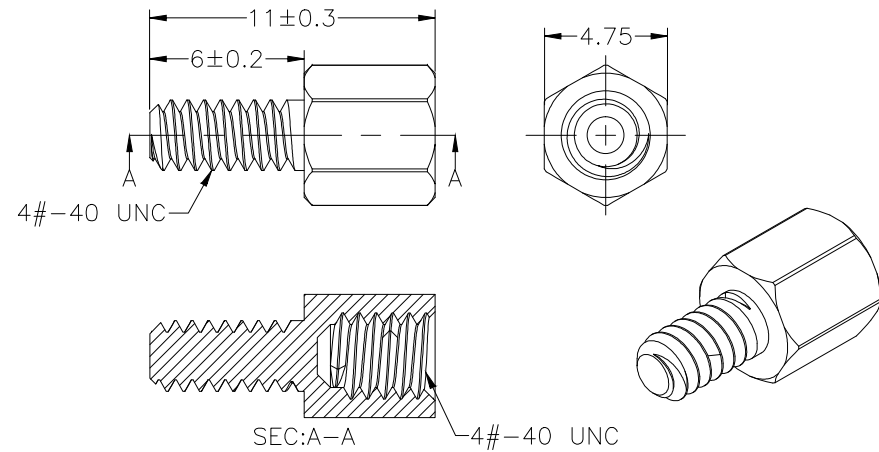
26 Pin Female Connector  
PCB Pin Layout  
Scale 2:1

**RoHS compliant**  
Unit: mm

Scale	Free				Date	Name	Customer-No.		
<b>TOLERANCE</b>					Drawn	30.12.2008	JACK		
X.X	±0.25	④	Amend dimension range of 3.96	16.03.2021	Luca	Approved	16.03.2021	Luca	ASSMANN WSW-No. <b>A-HDF 26 PP-WP</b>
X.XX	±0.10	③	Add the screw spec on page 2	24.08.2020	Segal				
X.XXX	±0.05	②	Change dimension and add notes	24.01.2018	Segal				Drawing-No.
DIM	TOL	①	Drawn	30.12.2008	JACK				ASS 3283 CO
Angle	±1°	Id.	Modification	Date	Name	Replace	Sheet 1/2		



ASCW-000-01EB10



ASCW-000-01EB11

Technical requirements:  
 1.Material: Brass C3604;  
 2.Requirements: Bright nickel 100u" Min, salt spray 48H.

**RoHS compliant**  
 Unit: mm

Scale	Free				Date	Name	Customer-No.
<b>TOLERANCE</b>					Drawn	30.12.2008	JACK
X.X	±0.25	④ Amend dimension range of 3.96	16.03.2021	Luca	Approved	16.03.2021	Luca
X.XX	±0.10						
X.XXX	±0.05		③ Add the screw spec on page 2	24.08.2020	Segal		
DIM	TOL	② Change dimension and add notes	24.01.2018	Segal	Drawing-No. <b>ASS 3283 CO rev04</b>		
		① Drawn	30.12.2008	JACK	Replace		
Angle	±1°		Id.	Modification			

