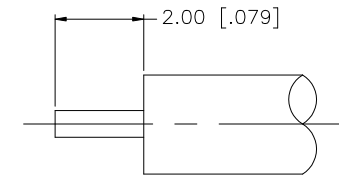
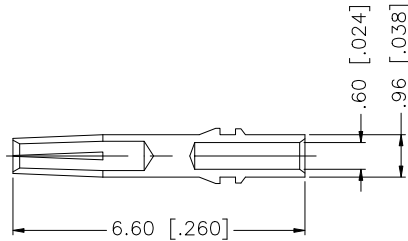
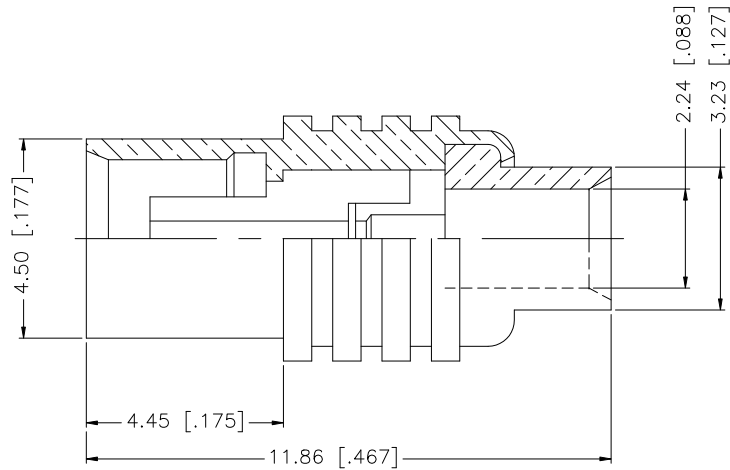


REV.	DATE	ECR NO.	DESCRIPTION
NC	01/19/98	-	INITIAL RELEASE
A	06/24/08	100039	UPDATE DRAWING FORMAT



RECOMMENDED CABLE STRIPPING DIMENSIONS

8					<small>UNLESS OTHERWISE SPECIFIED DIMENSIONS ARE IN MILLIMETERS. DIMENSIONS IN [] ARE IN INCHES AND FOR CUSTOMER REFERENCE ONLY.</small> <small>UNLESS OTHERWISE SPECIFIED TOLERANCES FOR MILLIMETERS ARE:</small> 0.5 - 8mm ± 0.20mm 8 - 30mm ± 0.40mm 30 - 120mm ± 0.50mm <small>UNLESS OTHERWISE SPECIFIED TOLERANCES FOR INCHES ARE:</small> .020 - .315 = ± 0.007" .315 - 1.180 = ± 0.015" 1.180 - 4.724 = ± 0.020"	APPROVALS	DATE	<h1 style="color: blue;">Amphenol Connex</h1>			
7				DRAWN		GRS	06/24/08				
6				CHECKED				PART DESCRIPTION MCX DIRECT SOLDER JACK (FOR .085", .086" CABLE)			
5				ISSUED							
4				SHEET	1 OF 1		PART NO. 252131				
3	CONTACT PIN	BER. COPPER	GOLD	1	DWG. NO. 252131.DWG						
2	INSULATOR	PTFE	NATURAL	1					REV. A SIZE A SCALE NA		
1	BODY	BRASS	GOLD	1							
DO NOT SCALE DRAWING				C:/252/252131.DWG							