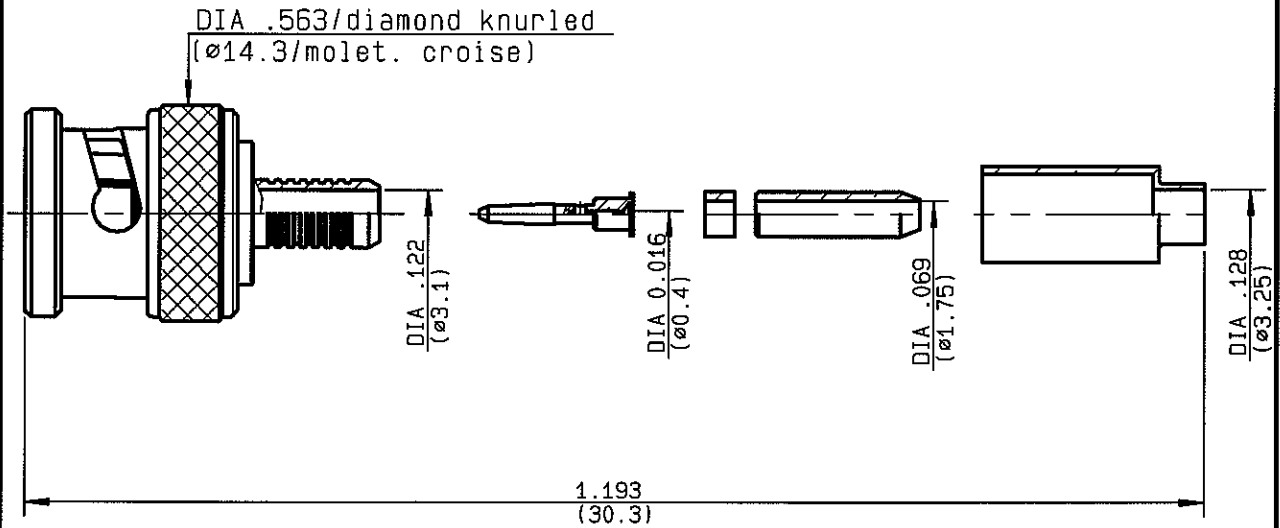


**STRAIGHT PLUG CRIMP TYPE
CABLE 2.6/75 S**

R142.076.000
SERIES **BNC 75**



NOMINAL IMPEDANCE	75 Ω	CABLES : RG 179
FREQUENCY RANGE	0-1.5 GHz	RG 187
TEMPERATURE RATING	-65/+165 °C	
V.S.W.R	1.30 + 0 x F(GHz)Maxi	
RF INSERTION LOSS	0.115 √F(GHz) dB Maxi	
VOLTAGE RATING	335 Veff Maxi	
DIELECTRIC WITHSTANDING VOLTAGE	1000 Veff Mini	
INSULATION RESISTANCE	5000 M ΩMini	OTHERS CHARACTERISTICS
HERMETIC SEAL	NA Atm.cm ³ /s	CABLE RETENTION
LEAKAGE (pressurized only)	NA	40 N Mini
MECHANICAL DURABILITY	500 Cycles	CENTER CONTACT RETENTION
WEIGHT	10 gr	Axial force - mating end
SPECIFICATION		27 N Mini
		Axial force - opposite end
		27 N Mini
		Torque
		NA cm.N Mini
		RECOMMENDED TORQUES
		Mating
		NA cm.N
		Panel nut
		NA cm.N
		Clamp nut
		NA cm.N

CONNECTOR PARTS	MATERIALS	FINISH	(all values are given in micrometers)
BODY	BRASS	NICKEL 2	
OUTER CONTACT			
CENTER CONTACT	BRASS	GOLD 0.5 OVER NICKEL 2	
INSULATOR	PTFE	-	
GASKET	SILICONE RUBBER	-	
OTHERS PIECES	BRASS	NICKEL 2	

ISSUE 0619 H	CREATION DATE 19/09/1983	FILE PART-NUMBER
------------------------	------------------------------------	------------------



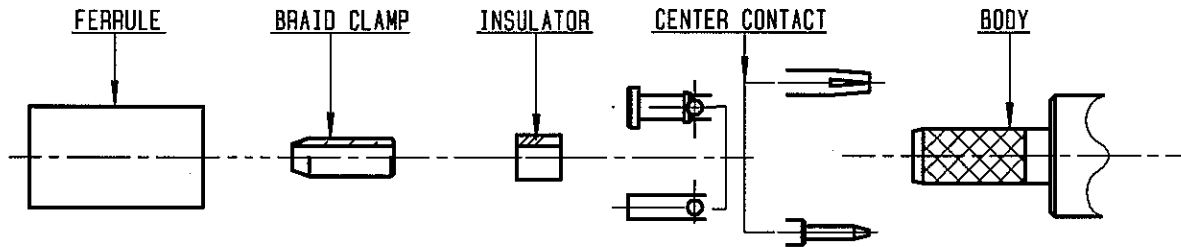
PICTON

The information given here is subject to change without notice. Design changes may be in order to improve the product.

Connect to the future

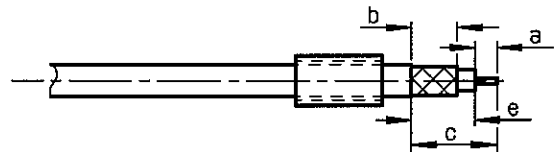


R142.076.000
 ISSUE 0619 H SERIES BNC 75



①

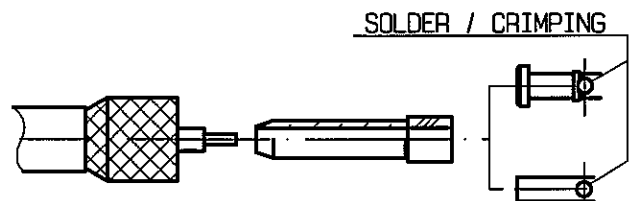
Slide ferrule onto cable .
 Strip the cable .
 -
 -



Stripping	a	b	c	d	e
inch	0.157	0.394	0.728 0		0.571
mm	4	10	18.5		14.5

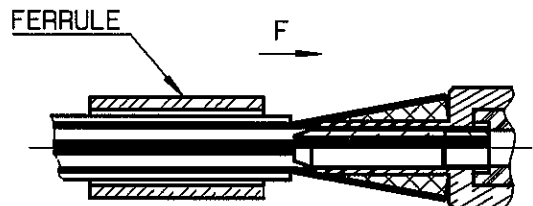
②

Fan the braid .
 Slide braid clamp and insulator between dielectric and braid .
 Slide center contact on until it bottoms against cable dielectric .
 Solder or crimp center contact .
 Crimping tool : R282 223 000 (Hex. : 0.068)
 or R282 293 000 (M22520/5-01)
 + dies R282 235 011 (M22520/5-11)



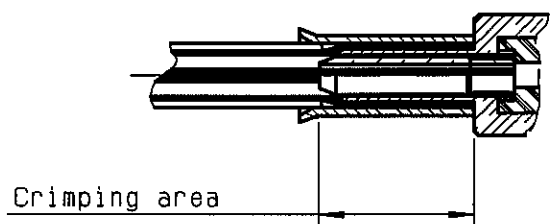
③

Slide cable into body until bottoms against insulator .
 Slide ferrule over the braid .
 (In direction F)
 -



④

Crimp the ferrule with crimping tool R 282 223 000 (Hex. : 0.213) or crimping tool R282 293 000 (M22520/5-01) + dies R282 235 011 (M22520/5-11)
 Cut excess braid if necessary.
 -
 -
 -
 -



PICTON