

6

5

4

3

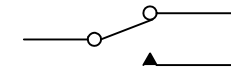
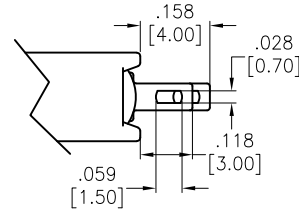
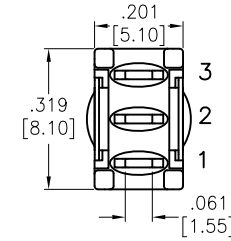
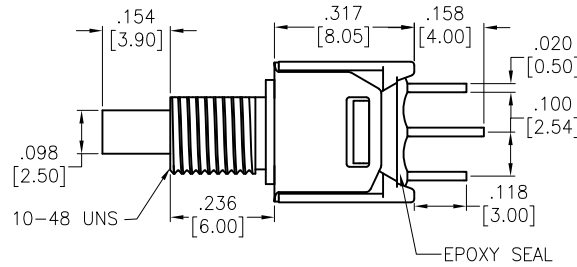
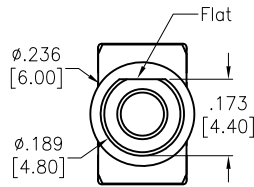
2

1

APPROVED: \_\_\_\_\_

DATE: \_\_\_\_\_ TITLE: \_\_\_\_\_

Rev	AWO #	Description	Date	Appr
-		RELEASED	3/5/21	



CIRCUIT DIAGRAM (SPDT) ON-MOMENTARY

SPECIFICATIONS:

Material:

Movable Contact: Copper Alloy, Silver Plated

Terminal: Copper Alloy, Silver Plated

Electrical:

Rating: 1 Amps with resistive load @ 125VAC or 28VDC

Contact resistance: 20 mΩ max

Insulation resistance: 1,000 Mohms min

Dielectric withstanding voltage: 1,500V RMS @Sea level

Temperature Rating:

Operating temperature: -30°C to +85°C

Environmental:

Lead free, RoHS compliant



UNLESS OTHERWISE SPECIFIED  
ALL DIMENSIONS ARE INCHES [MM]  
TOLERANCES: EXCEPT AS NOTED

INCHES		HOLES	
.X	± .10	Ø.X	± .10
.XX	± .020	Ø.XX	± .015
.XXX	± .015	Ø.XXX	± .010



909 Rahway Avenue,  
Union, NJ 07083  
Phone: 908-687-5000  
Fax: 908-687-5710

APPROVALS		DATE
DRAWN	WX	3/5/21
CHECKED	AC	3/5/21
APPROVED		

TITLE PUSHBUTTON SWITCH, ON-MOMENTARY, SPDT COPPER ALLOY SILVER PLATED, SOLDER TYPE		
SIZE X	PART NO. SW-PB9-AA00AQE-5	REV. -
REF: S00198T	SCALE: NTS	SHEET 1 OF 1

6

5

4

3

2

1