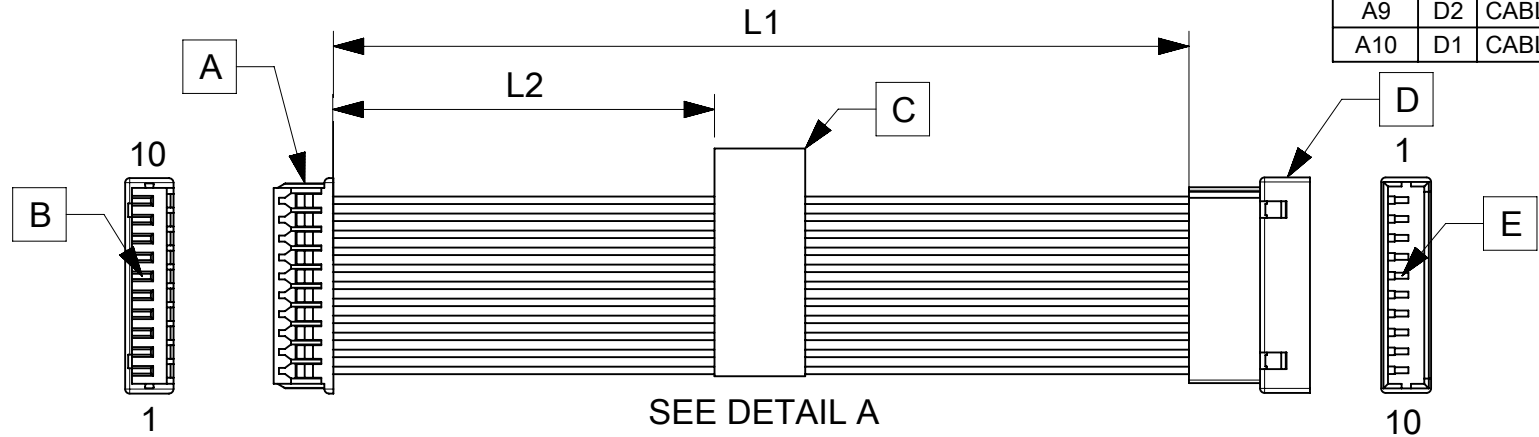


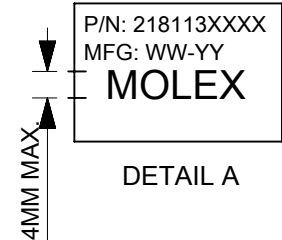
ITEM	PART#	DESCRIPTION	QTY	UOM
A	510211000	PicoBlade1.25 Rec Hsg 10P	1	PC
B	500588000	PicoBlade1.25 Crimp Rec Term Chain Tin	10	PC
C	--	Blank label 12.7x35.5mm (WHT:12.7mm) HF	1	PC
D	510471000	PicoBlade1.25 Plug Hsg 10P	1	PC
E	501338000	PicoBlade1.25 Crimp Plug Term Chain	10	PC

FROM	TO	DESCRIPTION	COLOR
A1	D10	CABLE 28 AWG UL 1061 BLACK	BLACK
A2	D9	CABLE 28 AWG UL 1061 BLACK	BLACK
A3	D8	CABLE 28 AWG UL 1061 BLACK	BLACK
A4	D7	CABLE 28 AWG UL 1061 BLACK	BLACK
A5	D6	CABLE 28 AWG UL 1061 BLACK	BLACK
A6	D5	CABLE 28 AWG UL 1061 BLACK	BLACK
A7	D4	CABLE 28 AWG UL 1061 BLACK	BLACK
A8	D3	CABLE 28 AWG UL 1061 BLACK	BLACK
A9	D2	CABLE 28 AWG UL 1061 BLACK	BLACK
A10	D1	CABLE 28 AWG UL 1061 BLACK	BLACK



SEE DETAIL A

TABLE			
PART NUMBER	L1	L2 (REF)	TITLE
2181131000	75±5	30	10 CIRCUIT PICOBLADE R:P CABLE 75MM
2181131001	150±6	70	10 CIRCUIT PICOBLADE R:P CABLE 150MM
2181131002	225±6	105	10 CIRCUIT PICOBLADE R:P CABLE 225MM
2181131003	300±8	145	10 CIRCUIT PICOBLADE R:P CABLE 300MM
2181131004	425±8	205	10 CIRCUIT PICOBLADE R:P CABLE 425MM



- NOTES
1. Cable assembly to be tested 100% for continuity and polarity.
 2. Connector view shown is from mating side.
 3. Label text must be 2mm max. in height with Arial font.
 4. Label must be wrapped in flag type on the cables.

FUNCTIONAL SYMBOLS $\frac{E}{A} = 0$ $\frac{E}{E} = 0$ $\frac{E}{P} = 0$ DIVISIONAL SYMBOLS	DIMENSION UNITS: mm SCALE: NTS		CURRENT REV DESC:					
	GENERAL TOLERANCES (UNLESS SPECIFIED)		EC NO: 659320 DRWN: ARAJU 2021/03/04 CHK'D: RDESAI01 2021/03/26 APPR: RDESAI01 2021/03/26					SEE TABLE
	ANGULAR TOL ± °		INITIAL REVISION:		PRODUCT CUSTOMER DRAWING			
	4 PLACES ± 3 PLACES ± 2 PLACES ± 1 PLACE ± 0 PLACES ±		DRWN: ARAJU 2021/03/04 APPR: RDESAI01 2021/03/26		DOCUMENT NUMBER: 2181131000		DOC TYPE: PSD	DOC PART: 000

REVISION			
DATE	REV	DESCRIPTION	CHANGER
04/03/2021	A	INITIAL RELEASE	ARAJU

DOCUMENT STATUS: P1	RELEASE DATE: 2021/03/26	04:03:48
---------------------	--------------------------	----------