

1

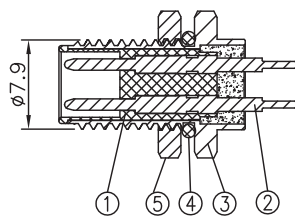
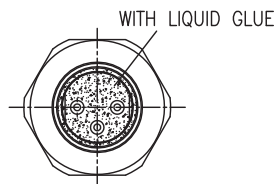
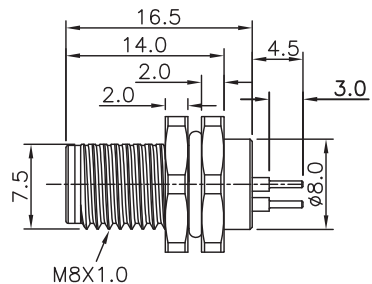
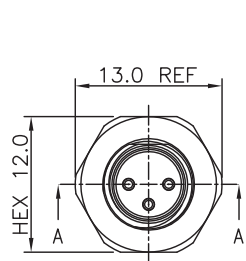
2

3

4

5

RoHS Compliant



Section A-A

## Specifications:

Current Rating: 3A(2~5P); 1A(6~8P) AC/DC  
 Voltage Rating: 60V(2~3P); 30V(4~8P) AC/DC  $\triangle B$   
 Contact Resistance: 5m ohm. Max.  
 Insulation Resistance: 100M ohm. Min.  
 Withstanding Voltage: 500V AC/Minute(2~5P)  
 250V AC/Minute(6~8P)

Waterproof rate: IP67

Operating Temperature Range: -40°C ~ +100°C

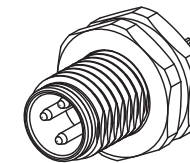
Material and Finish

See Table

How to Order

M08-XXP-FX-PB

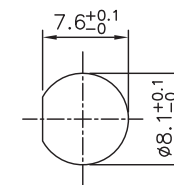
Panel Mount PCB Dip  
 A:A Coding B:B Coding  
 Front Fastened  
 Plug  
 No. of Contacts  
 M8



## Pin Assignments Front View

Coding	2P	3P	4P	5P	6P	8P
A Coding						
PCB LAYOUT						

Item	Description	Material	Remark	Q'TY
1	Insulator	Nylon	UL94V-0 Black	1
2	Terminal	Copper Alloy	Gold Plated 3u"	2~8
3	Shell	Copper Alloy	Nickel Plated 60u"	1
4	Seal ring	Silicone	Red	1
5	Nut	Copper Alloy	Nickel Plated 60u"	1



Recommended  
 Panel CUT-OUT  
 Thickness: Max 3.5MM

F				DRAWN:	GENERAL TOLERANCE:
E				Julian	X.=±0.3 .X=±0.2 .XX=±0.15
D				CHECKED:	UNIT: MM
C				Bill He	SCALE: 1:1
B	09-Aug-2019	$\triangle B$	Andrew	APPROVAL:	SHEET: 1/1
A	31-Jul-2019		Julian		PROJECTION:
REV	DATE	FILE	BY	Norman	

ON-SHORE TECHNOLOGY, INC.

DESCRIPTION:

M8 PLUG FRONT FASTENED STRAIGHT TYPE

PART NO:

M08-XXP-FX-PB