

## Sensor/Actuator cable - SAC-3P-M12MS/0,3-PUR/B-1L-S - 1669152

Please be informed that the data shown in this PDF Document is generated from our Online Catalog. Please find the complete data in the user's documentation. Our General Terms of Use for Downloads are valid (<http://download.phoenixcontact.com>)



Sensor/Actuator cable, 3-position, PUR/PVC, Black RAL 9005, Plug straight M12, A-coded, on Valve connector B (10 mm), with 1 LED, connected with Z diode, Cable length: 0.3 m



### Key commercial data

Packing unit	1 1
GTIN	 4 017918 135881
Weight per Piece (excluding packing)	53.4 GRM
Custom tariff number	85444290
Country of origin	Germany

### Technical data

#### Dimensions

Length of cable	0.3 m
-----------------	-------

#### Ambient conditions

Ambient temperature (operation)	-25 °C ... 90 °C (Plug / socket)
	-20 °C ... 80 °C (valve plug)
Degree of protection	IP67

#### General

Rated current at 40°C	4 A
Rated voltage	24 V
Number of positions	3
Contact resistance	≤ 5 mΩ
Insulation resistance	≥ 100 MΩ
Coding	A - standard

## Sensor/Actuator cable - SAC-3P-M12MS/0,3-PUR/B-1L-S - 1669152

### Technical data

#### General

Status display	1 LED
Protective circuit/component	Z diode
Surge voltage category	II
Pollution degree	3
Insertion/withdrawal cycles	≥ 100

#### Material

Inflammability class according to UL 94	HB
Contact material	CuSn
Contact surface material	Ni/Au
Contact carrier material	TPU GF
Material of grip body	TPU, hardly inflammable, self-extinguishing
Valve plug contact material	CuSn
Valve plug contact surface material	Ag
Valve plug contact insert material	PBT
Material housing valve plug	PBT
Material, knurls	Zinc die-cast, nickel-plated
Sealing material	TPU (Flat gasket valve plug)

#### Cable

Cable type	PUR/PVC black
Cable abbreviation	LiYY11Y-JZ
Conductor cross section	0.75 mm <sup>2</sup>
AWG signal line	18
Conductor structure signal line	42x 0.15 mm
Core diameter including insulation	approx. 1.8 mm
Thickness, insulation	approx. 0.34 mm (Core insulation) approx. 0.35 mm (Outer cable sheath) approx. 0.3 mm (Inner sheath)
Wire colors	black 1, black 2, green/yellow
Overall twist	3 concentrically twisted wires
External sheath, color	Black RAL 9005
External cable diameter	5.90 mm
Smallest bending radius, movable installation	59 mm
Outer sheath, material	PUR
Material, inner sheath	PVC
Material conductor insulation	PVC
Conductor material	Bare Cu litz wires

## Sensor/Actuator cable - SAC-3P-M12MS/0,3-PUR/B-1L-S - 1669152

### Technical data

#### Cable

Insulation resistance	$\geq 1 \text{ M}\Omega \cdot \text{km}$
Nominal voltage, cable	300 V
Test voltage, cable	2000 V
Ambient temperature (operation)	-30 °C ... 70 °C (cable, fixed installation)
	-5 °C ... 70 °C (cable, flexible installation)

### Classifications

#### eCl@ss

eCl@ss 4.0	27060306
eCl@ss 4.1	27060306
eCl@ss 5.0	27061801
eCl@ss 5.1	27061801
eCl@ss 6.0	27061801
eCl@ss 7.0	27061801
eCl@ss 8.0	27061801

#### ETIM

ETIM 2.0	EC000830
ETIM 3.0	EC001855
ETIM 4.0	EC001855
ETIM 5.0	EC001855

#### UNSPSC

UNSPSC 6.01	31251501
UNSPSC 7.0901	31251501
UNSPSC 11	31251501
UNSPSC 12.01	31251501
UNSPSC 13.2	31251501

### Approvals

#### Approvals

---

Approvals

GOST

---

# Sensor/Actuator cable - SAC-3P-M12MS/0,3-PUR/B-1L-S - 1669152

## Approvals

Ex Approvals

---

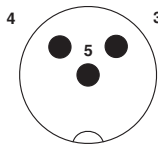
Approvals submitted

## Approval details



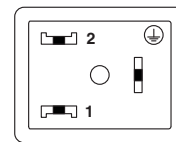
## Drawings

Schematic diagram



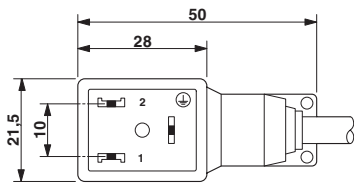
Pin assignment M12 plug, 3-pos., valve connector

Schematic diagram



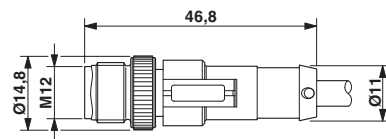
Valve connector pin assignment, type B

Dimensioned drawing



Valve connector, type B

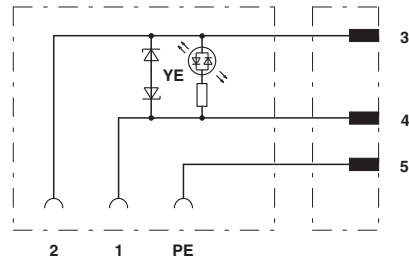
Dimensioned drawing



M12 x 1 plug, straight

## Sensor/Actuator cable - SAC-3P-M12MS/0,3-PUR/B-1L-S - 1669152

Circuit diagram



Contact assignment of M12 plug and valve connector