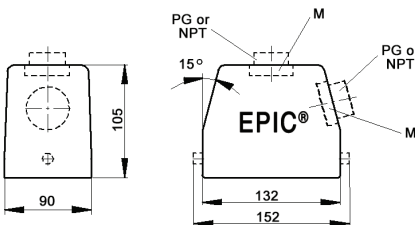
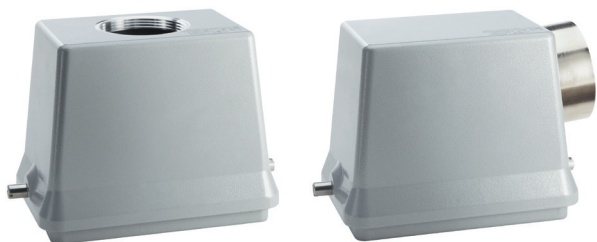


EPIC® HB 48 standard hood

Hood with single lever bolts




all dimensions are in mm

Technical data

IP Protection class: NEMA 4, NEMA 12
IP65

Complete the installation

 HB dust covers
page 429

Approvals



PG

PG hood		SKINTOP® gland	
size	part number	plastic	metal
Top entry			
PG 29	101550	53015060	52015760
PG 36	101560	53015070	52015765
PG 42	101570	53015080	52015766
Side entry			
PG 29	101580	53015060	52015760
PG 36	101590	53015070	52015765
PG 42	101600	53015080	52015766

NPT

NPT hood		SKINTOP® gland	
size	part number	plastic	metal
Top entry			
1"	101550NP	S 1101	53112044
1¼"	101560NP	—	53112054
Side entry			
1"	101580NP	S 1101	53112044
1¼"	101590NP	—	53112054

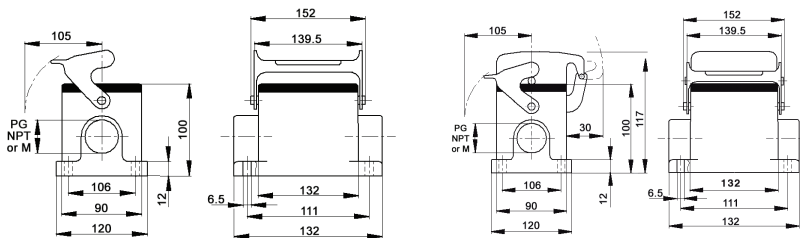
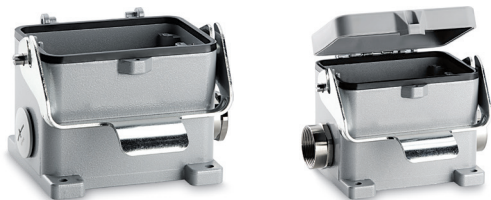
metric

Metric hood*		SKINTOP® gland	
size	part number	plastic	metal
Top entry			
M32	19155000	53111040	53112040
M40	19156000	53111050	53112050
M50	19157000	53111060	53112060
Side entry			
M32	19158000	53111040	53112040
M40	19159000	53111050	53112050
M50	19160000	53111060	53112060

* Metric hoods do not come with a neck

EPIC® HB 48 surface mount base

Surface mount base with single lever




all dimensions are in mm

Technical data

IP Protection class: NEMA 4, NEMA 12
IP65

Complete the installation

 HB dust covers
page 429

Approvals



PG

PG base		Dust cover	SKINTOP® gland	
size	part number		plastic	metal
One entry				
29	101650	no	53015060	52015760
29	101670	yes	53015060	52015760
36	101651	no	53015070	52015765
36	101671	yes	53015070	52015765
Two entries				
29	101660	no	53015060	52015760
29	101680	yes	53015060	52015760
36	101661	no	53015070	52015765
36	101681	yes	53015070	52015765

PG base provided with EPIC® SM/SP gland

NPT

NPT base		Dust cover	SKINTOP® gland	
size	part number		plastic	metal
One entry				
1"	101650NP	no	S 1101	53112044
1"	101670NP	yes	S 1101	53112044
1¼"	101651NP	no	—	53112054
1¼"	101671NP	yes	—	53112054
Two entries				
1"	101660NP	no	S 1101	53112044
1"	101680NP	yes	S 1101	53112044
1¼"	101661NP	no	—	53112054
1¼"	101681NP	yes	—	53112054

NPT base provided with NPT fitting

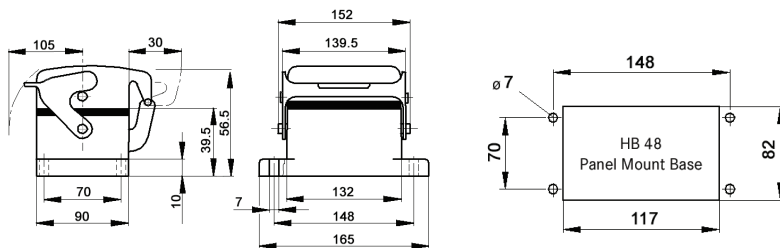
metric

Metric base		Dust cover	SKINTOP® gland	
size	part number		plastic	metal
One entry				
32	19165000	no	53111040	53112040
32	19167000	yes	53111040	53112040
40	19165100	no	53111050	53112050
40	19167100	yes	53111050	53112050
Two entries				
32	19166000	no	53111040	53112040
32	19168000	yes	53111040	53112040
40	19166100	no	53111050	53112050
40	19168100	yes	53111050	53112050

Recommended SKINTOP® assumes minimal OD variance. Additional configurations are available; please see our SKINTOP® section.
If not otherwise specified, all values relating to the product are nominal values.
Photographs are not to scale and are not true representations of the products in question.

EPIC® HB 48 panel mount base

Panel mount base with single lever




all dimensions are in mm


Technical data

IP Protection class: NEMA 4, NEMA 12
IP65

Complete the installation

 HB dust covers
page 429

Approvals



Dust cover included	Hardware	Part number
no	—	10161000
yes	dust cover bolts	10152500
yes	dust cover hold screw	10152000

Recommended SKINTOP® assumes minimal OD variance. Additional configurations are available; please see our SKINTOP® section.
If not otherwise specified, all values relating to the product are nominal values.
Photographs are not to scale and are not true representations of the products in question.