

CODE 30 - HEAT SHRINK BOOT BACKSHELL

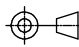


211M914-19C-D

SERIES _____
 SHELL SIZE (TABLE 1) _____
 MATERIAL _____
 REFER TO CH00-0250-004
 FINISH _____
 REFER TO CH00-0250-004
 MODIFICATION CODE _____
 REFER TO CH00-0250-004 (2)

NOTES:

1. THIS PRODUCT IS DESIGNED TO TERMINATE A HEAT SHRINKABLE LIPPED BOOT TO A CONNECTOR.
- (2) FOR ADDITIONAL DIMENSIONS, ORDERING INFORMATION AND MODIFICATIONS, SEE CH00-0250-004.
3. BACKSHELL TO BE PERMANENTLY MARKED/BAGGED AND LABELLED WITH CODE IDENTIFICATION NUMBER AND PART NUMBER. (e.g. 06090-211M914-19C).
- (4) KNURL INSIDE BOOT GROOVE MAY BE SUPPLIED AT MANUFACTURER'S OPTION.
5. BACKSHELL MATES TO MIL-C-28840, CLASS A, B, C, & E: M28840/10, /11, /14 & /16 CONNECTORS.

If this document is printed it becomes uncontrolled. Check for the latest revision

| | | | | | | | | |
|--|---------------------------|------------|--|---|--|--|--------------------------|-----------------|
| DRAWN | K.WINCZURA | DATE | 07/05/2015 |  3RD ANGLE PROJECTION NOT TO SCALE | TITLE: HEAT SHRINK BOOT BACKSHELL |  Polamco  TE <small>connectivity</small> | | |
| CHECKED | | 07/05/2015 | | | | | | |
| APPROVED | K.SHEPPARD | 08/05/2015 | UNLESS OTHERWISE SPECIFIED ALL DIMENSIONS IN MILLIMETRES GENERAL TOL LINEAR +/-0.25MM ANGULAR +/- 1° | | | | | |
| APPROVED | H.SMITH | 24/06/2015 | | | | | | |
| REVISIONS | | | | | ASSY USED ON: MIL-C-28840, CLASS A, B, C, & E: M28840/10, /11, /14 & /16 CONNECTORS | | | |
| LTR | DESCRIPTION | DATE | APPROVED | | | | | |
| F | REVISED PER ECN AD93049 | | | | | | | |
| G | REVISED PER ECO-15-009385 | 24/06/2015 | H.SMITH | | | | | |
| TE CAGE CODE: 06090 POLAMCO/TE CAGE CODE: U5792 | | | | | TE CONNECTIVITY - POLAMCO LTD RESERVES THE RIGHT TO AMEND THIS DRAWING AND THE INFORMATION SET FORTH HEREON AT ANY TIME. USERS SHOULD INDEPENDENTLY EVALUATE THE SUITABILITY OF THE PRODUCT FOR THEIR APPLICATION. | DRAWING NO: 211M9XX | DRAWING REV: G | SHT 1 |

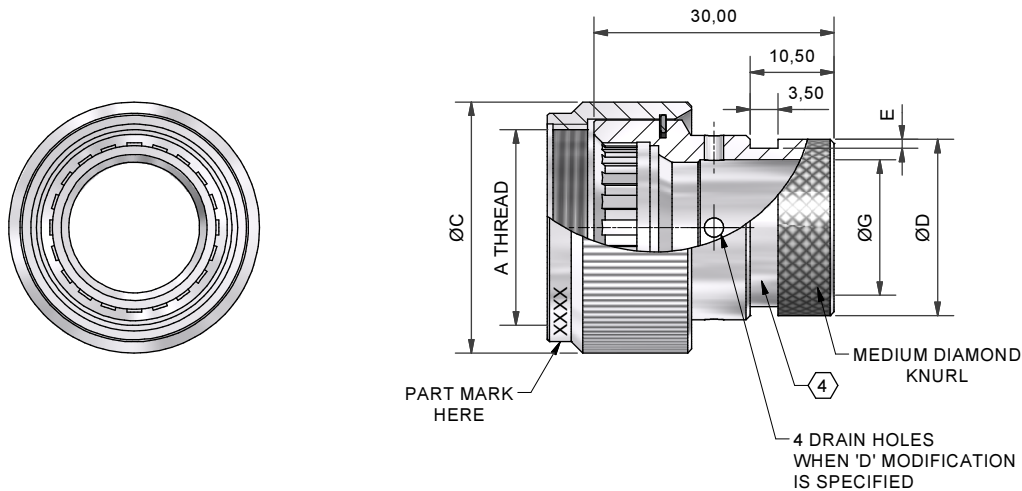
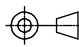




TABLE 1

| BASE PART NUMBER | SHELL SIZE COM'L / MIL | A THREAD | ØC MAX | ØD MAX | E +0,20/-0,00 | ØG MIN |
|------------------|------------------------|-----------------|--------|--------|---------------|--------|
| 211M912 | 13 / B | 7/8 - 20UNEF | 29,7 | 18,9 | 1,12 | 13,8 |
| 211M914 | 15 / C | 1 - 20UNEF | 31,3 | 22,0 | 1,12 | 16,9 |
| 211M916 | 17 / D | 1 1/8 - 18 UNEF | 35,5 | 24,1 | 1,12 | 19,0 |
| 211M918 | 19 / E | 1 1/4 - 18UNEF | 38,7 | 28,0 | 1,75 | 22,4 |
| 211M922 | 23 / F | 1 7/16 -18UNEF | 43,6 | 34,5 | 1,75 | 28,4 |
| 211M924 | 25 / G | 1 9/16 -18UNEF | 47,2 | 36,8 | 1,75 | 30,7 |
| 211M928 | 29 / H | 1 7/8 - 16UN | 55,2 | 42,9 | 1,75 | 36,8 |
| 211M932 | 33 / J | 2 1/16 -16UN | 60,5 | 47,9 | 2,20 | 41,7 |

If this document is printed it becomes uncontrolled. Check for the latest revision

| | | | | | | | | |
|--|---------------------------|------------|---|--|--|--|---------------------------------|------------------------|
| DRAWN | K.WINCZURA | DATE | 07/05/2015 |  3RD ANGLE PROJECTION NOT TO SCALE | TITLE: HEAT SHRINK BOOT BACKSHELL |  Polanco  | | |
| CHECKED | | 07/05/2015 | | | | | | |
| APPROVED | K.SHEPPARD | 08/05/2015 | UNLESS OTHERWISE SPECIFIED ALL DIMENSIONS IN MILLIMETRES GENERAL TOL LINEAR +/-0,25MM ANGULAR +/- 1° | | | | | |
| APPROVED | H.SMITH | 24/06/2015 | | | | | | |
| REVISIONS | | | | | ASSY USED ON: MIL-C-28840, CLASS A, B, C, & E: M28840/10, /11, /14 & /16 CONNECTORS | TE CONNECTIVITY - POLAMCO LTD RESERVES THE RIGHT TO AMEND THIS DRAWING AND THE INFORMATION SET FORTH HEREON AT ANY TIME. USERS SHOULD INDEPENDENTLY EVALUATE THE SUITABILITY OF THE PRODUCT FOR THEIR APPLICATION. | | |
| LTR | DESCRIPTION | DATE | APPROVED | DRAWING NO: 211M9XX | | | DRAWING REV: G | SHT 2 |
| F | REVISED PER ECN AD93049 | | | | | | | |
| G | REVISED PER ECO-15-009385 | 24/06/2015 | H.SMITH | | | | | |
| TE CAGE CODE: 06090 POLAMCO/TE CAGE CODE: U5792 | | | | | | | | |