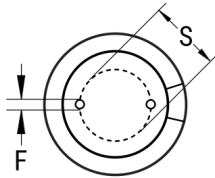


SIDE VIEW



TERMINAL END VIEW



Click [here](#) for the 3D model.

### Dimensions

D	18mm +/-0.5mm
L	40mm +2.0/-0mm
S	7.5mm +/-0.5mm
LL Negative	15mm MIN
LL Positive	20mm MIN
F	0.8mm NOM

### Packaging Specifications

Packaging	Bulk, Bag
Packaging Quantity	500

### General Information

Series	ESH
Dielectric	Aluminum Electrolytic
Description	High CV Single Ended Aluminum Electrolytic
RoHS	Yes
Lead	Wire Leads
AEC-Q200	No

### Specifications

Capacitance	82 $\mu$ F
Capacitance Tolerance	20%
Voltage DC	500 VDC, 550 VDC (Surge)
Temperature Range	-25/+105°C
Rated Temperature	105°C
Life	2000 Hrs
Dissipation Factor	25% 120Hz 25C
Ripple Current	335 mAmps (120Hz 105C)
Leakage Current	1740 $\mu$ A (2min 20°C)
Impedance Ratio at -25C	6