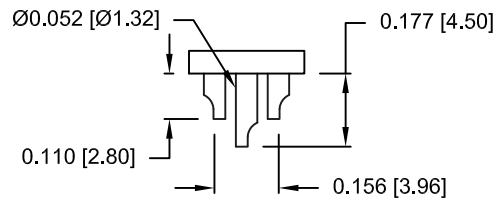
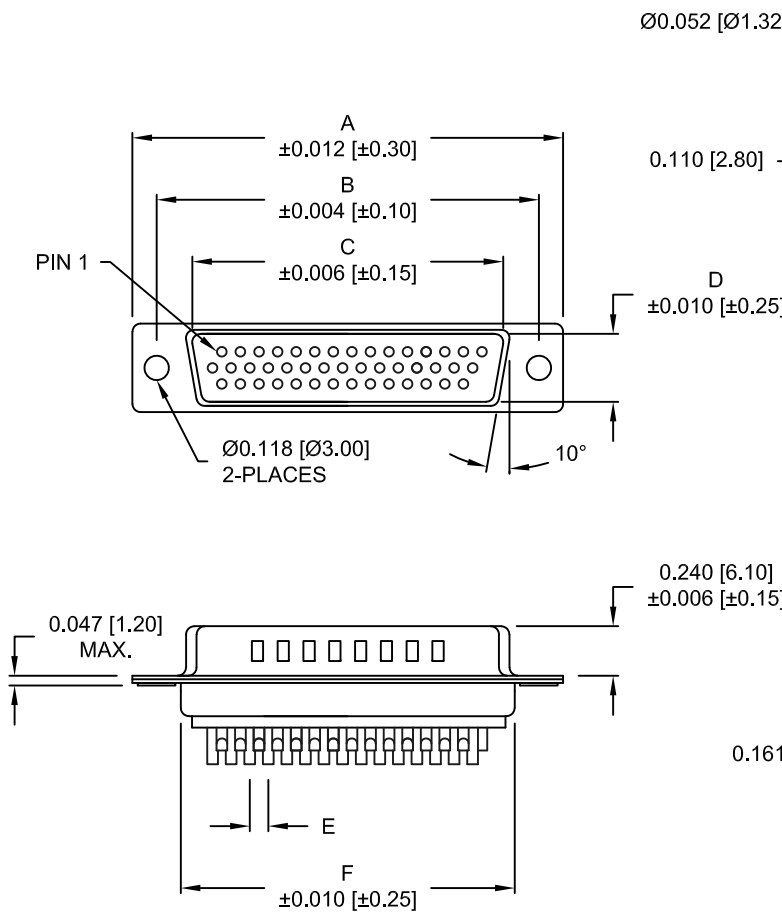
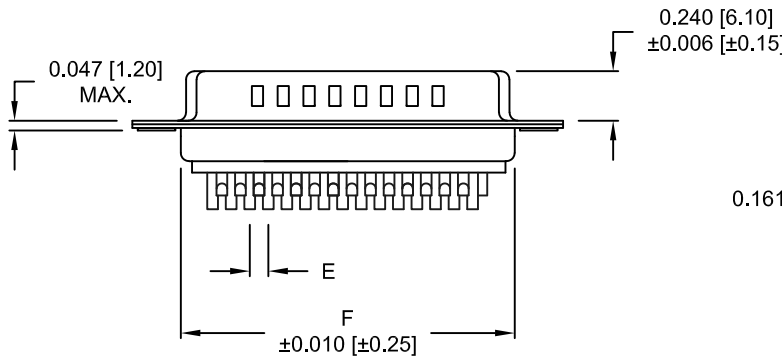


DESCRIPTION: HIGH DENSITY MALE - SOLDER CUP - SEALED



| No. OF PINS | DIMENSIONS |       |       |       |       |       |       |       |
|-------------|------------|-------|-------|-------|-------|-------|-------|-------|
|             | A          | B     | C     | D     | E     | F     | G     | H     |
| 15          | 1.213      | 0.984 | 0.666 | 0.329 | 0.090 | 0.756 | 0.496 | 0.429 |
|             | 30.80      | 24.99 | 16.92 | 8.36  | 2.29  | 19.20 | 12.60 | 10.90 |
| 26          | 1.543      | 1.312 | 0.978 | 0.329 | 0.090 | 1.091 | 0.496 | 0.429 |
|             | 39.20      | 33.32 | 25.25 | 8.36  | 2.29  | 27.70 | 12.60 | 10.90 |
| 44          | 2.087      | 1.852 | 1.534 | 0.329 | 0.090 | 1.618 | 0.496 | 0.429 |
|             | 53.00      | 47.04 | 38.85 | 8.36  | 2.29  | 41.10 | 12.60 | 10.90 |



MEETS IP66 STANDARDS

(SEE PAGE 2 FOR SEALING DETAILS)

NOTE: WILL ACCEPT UP TO 24 AWG WIRE

680-YYY-103LYY1

SERIES \_\_\_\_\_  
 POSITIONS \_\_\_\_\_  
 015  
 026  
 044  
 GENDER \_\_\_\_\_  
 1 = MALE  
 TERMINATION \_\_\_\_\_  
 0 = SOLDER CUP  
 SHELL PLATING \_\_\_\_\_  
 3 = NICKEL (GROUND INDENTS)  
 RoHS COMPLIANT (230°C) \_\_\_\_\_  
 HARDWARE OPTIONS \_\_\_\_\_  
 00 = NO HARDWARE  
 01 = .098" CLINCH NUT (BOARD SIDE)  
 02 = .236" CLINCH NUT (BOARD SIDE)  
 03 = .236" CLINCH NUT (MATING SIDE)  
 PLATING OPTIONS \_\_\_\_\_  
 1 = GOLD FLASH  
 2 = 30u" GOLD

**MATERIAL:**


SHELL: STEEL, NICKEL PLATED  
 INSULATOR: PBT, UL 94V-O RATED,  
 +30% FIBER-GLASS OR NYLON-66  
 CONTACT: BRASS, GOLD PLATED OVER NICKEL  
 SEAL: F08 FLEXIBLE ADHESIVE

**ELECTRICAL:**

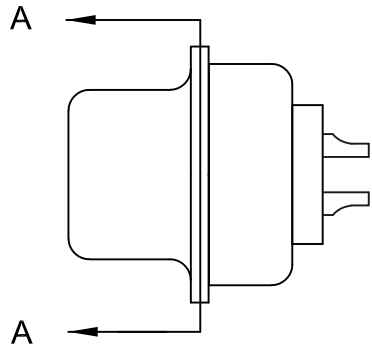
CURRENT RATING: 5 AMPS  
 CONTACT RESISTANCE: 15 mOhms Max.  
 INSULATION RESISTANCE: 1,000 MOhms min.  
 VOLTAGE: 500VAC FOR 1 MINUTE  
 TEMPERATURE: -50° C TO 100° C

DO NOT SCALE FROM DRAWING

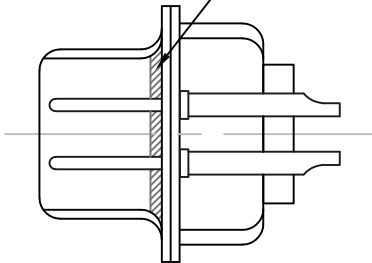
RoHS COMPLIANT

|  |   |                         |                   |
|--|---|-------------------------|-------------------|
|  | THESE DRAWINGS AND SPECIFICATIONS ARE THE PROPERTY OF NorComp AND SHALL NOT BE REPRODUCED, COPIED OR USED AS THE BASIS FOR THE MANUFACTURE OF SALE OF APPARATUS WITHOUT WRITTEN PERMISSION. | DRAWN:<br>P. JENKINS    | DATE:<br>11-24-11 |
|  | <h1>NorComp</h1>  | SCALE:<br>NTS           | SHEET<br>1 OF 2   |
|  |   | DWG NO. 680-YYY-103LYY1 |                   |

DESCRIPTION: CLINCH NUT HARDWARE



FRONT SEAL APPLIED OVER INSULATOR AND BETWEEN FRONT & REAR SHELLS



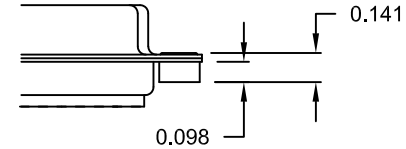
DETAIL A-A  
SHOWN FOR REFERENCE ONLY

RoHS COMPLIANT

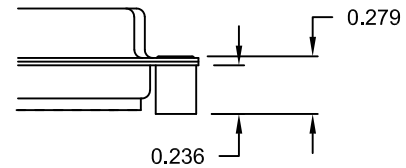
TOLERANCE:  
ALL DIMENSIONS ARE  $\pm 0.010$

ALL CLINCH-NUTS ARE 4-40 INTERNAL THREADS

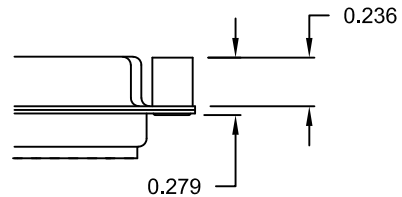
01X ..... 0.098" (BOARD SIDE) - CN1



02X ..... 0.236" (BOARD SIDE) - CN2



03X..... 0.236" (MATING SIDE) - CN8



DO NOT SCALE FROM DRAWING



THESE DRAWINGS AND SPECIFICATIONS ARE THE PROPERTY OF NorComp AND SHALL NOT BE REPRODUCED, COPIED OR USED AS THE BASIS FOR THE MANUFACTURE OF SALE OF APPARATUS WITHOUT WRITTEN PERMISSION.

|                         |            |                   |          |
|-------------------------|------------|-------------------|----------|
| DRAWN:<br>P. JENKINS    |            | DATE:<br>11-24-11 |          |
| SCALE:<br>NTS           | SHEET<br>2 | OF<br>2           | REV<br>1 |
| DWG NO. 680-YYY-103LYY1 |            |                   |          |

NorComp