



# Product Change Notification (PCN)

PCN Number	510245	Date Issued	July 28, 2021
Reason for Change	Change Supplier		
Change Type Description	This letter is to inform you that Molex is adding a new supplier or the supplier is making a change affecting the part(s) identified in this notice. There will be no negative impact to product performance as a result of this change.		
Reason for Short Notice	Force Majeure		
Assessment of Change	Test report/Specification Test Report		
Internal Molex Qualification Date	August 30, 2021		
Sample Availability Date (Changed Part)	August 30, 2021		
Planned Implementation Date	September 13, 2021		
Method of Identifying Change	Product made after planned implementation date can contain the change		

RELEASED

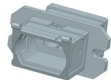
## Before Change



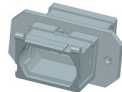
P/N: 106114-1103  
MPO EM Adapter Door



P/N: 106126-0594  
Metal LC DPX Receptacle (SC Footprint)



P/N: 106114-1101  
MPO EM Adapter Shell Flange



P/N: 106114-1401  
MPO EM Adapter Shell Flange with M2 Hole

## After Change

### Overview

- The purpose of this Force Majeure PCN is our current supplier is going out of business and Molex is transferring the current qualified tooling to an existing approved supplier that produces similar parts to ensure continuity of supply for part numbers list on the attached impacted parts list.
- This change will not impact fit, form, or function.
  - Current qualified tooling will be transferred to an existing approved supplier.
- Part Number Impact
  - See attached impacted parts list
- Qualification Reports and samples available upon request after the date shown above



## Product Change Notification (PCN)

---

You may address any technical inquiries regarding this PCN by sending E-mail to [pcn\\_coordinator@molex.com](mailto:pcn_coordinator@molex.com) or your Local Sales Engineer.

Note: While responding, please retain "**PCN Notification:510245**" in the e-mail Subject line for faster response.

RELEASED

**Molex, LLC**  
2222 Wellington Court  
Lisle, IL 60532  
TEL: 630-969-4747  
[www.molex.com](http://www.molex.com)

PCN #	Molex Part #
510245	1061140100
510245	1061141100
510245	1061141110
510245	1061141150
510245	1061141160
510245	1061141200
510245	1061141400
510245	1061143000
510245	1061144000
510245	1061151100
510245	1061151106
510245	1061151110
510245	1061151116
510245	1061151130
510245	1061271590
510245	1061271990