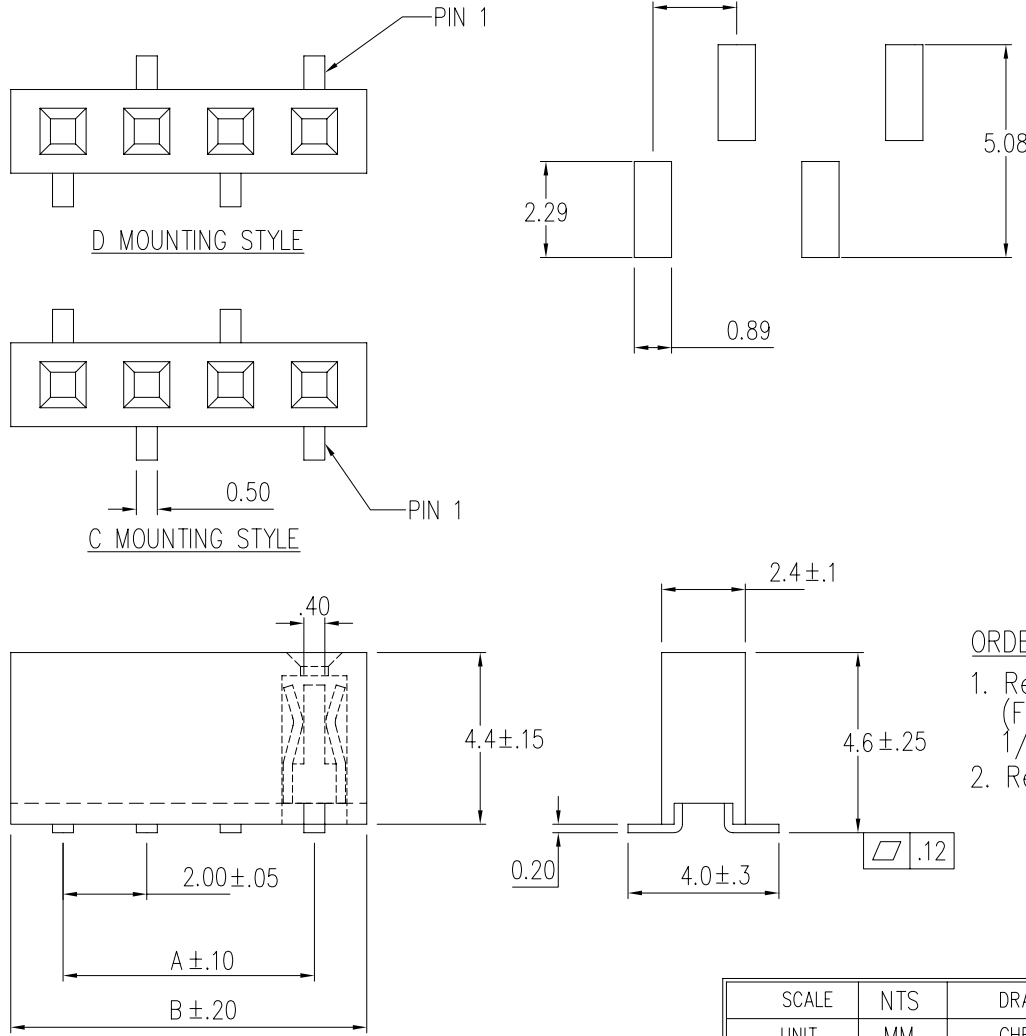


NO. OF CONTACTS/ POSITIONS	DIMENSIONS	
	A	B
2	2.00	4.50
3	4.00	6.50
4	6.00	8.50
5	8.00	10.50
6	10.00	12.50
7	12.00	14.50
8	14.00	16.50
9	16.00	18.50
10	18.00	20.50
11	20.00	22.50
12	22.00	24.50
13	24.00	26.50
14	26.00	28.50
15	28.00	30.50
16	30.00	32.50
17	32.00	34.50
18	34.00	36.50
19	36.00	38.50
20	38.00	40.50
21	40.00	42.50
22	42.00	44.50
23	44.00	46.50
24	46.00	48.50
25	48.00	50.50
26	50.00	52.50
27	52.00	54.50
28	54.00	56.50
29	56.00	58.50
30	58.00	60.50
31	60.00	62.50
32	62.00	64.50
33	64.00	66.50
34	66.00	68.50
35	68.00	70.50
36	70.00	72.50
37	72.00	74.50
38	74.00	76.50
39	76.00	78.50
40	78.00	80.50

RECOMMENDED PCB LAYOUT – D STYLE



REV.	ECO	DESCRIPTION	DATE	BY
A	642	INITIAL RELEASE	6/14/2005	TT
B	677	UPDATED DIMS	7/12/2005	TT
C	843	ADDED NOTE	11/29/2005	TT

PART NUMBER CODING  
 NPPNxx1BFLx-RC  
 MOUNTING STYLES (EVEN NO. OF POS.)  
 C – SMT, SINGLE ROW MALE PIN 1 LEFT  
 D – SMT, SINGLE ROW MALE, PIN 1 RIGHT  
 NUMBER OF POSITIONS  
 (2 – 40)

SPECIFICATIONS

CURRENT RATING : 1 AMPS  
 INSULATOR RESISTANCE : 5000 MEGOHMS MIN.  
 CONTACT RESISTANCE : 20 MILLIOHMS MAX.  
 DIELECTRIC WITHSTANDING : AC 500V  
 MAX PROCESSING TEMP : 230°C FOR 30 – 60 SECONDS  
 (260°C FOR 10 SECONDS)  
 OPERATING TEMPERATURE : -40°C TO +105°C  
 CONTACT MATERIAL : PHOSPHOR BRONZE.  
 INSULATOR MATERIAL: NYLON 6T, UL 94V-0  
 CONTACT PLATING: GOLD FLASH OVERALL

ORDERING INFORMATION:

1. Replace "xx" with number of positions (Pins)  
 (For dual rows connector, the number of positions is 1/2 the number of total contacts)
2. Replace "x" with mounting styles



ROHS COMPLIANT

NOTE: ODD NUMBER POSITIONS, MOUNTING STYLES CAN BE EITHER 'C' OR 'D'

SCALE	NTS	DRAW	TT	Sullins Electronics San Marcos, CA Tel: 760 744-0125 www.SullinsElectronics.com	
UNIT	MM	CHECK	MNH	NAME: 2mm HEADER, SURFACE MOUNT FEMALE, 4.10mm INSULATOR	
TOLERANCE		DATE	6/14/2005	PART NO	NPPNxx1BFLx-RC
.0=±0.35 .00=±0.2 ANG=±5°		PROJECTION		DRAW NO	10489