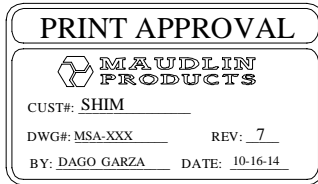
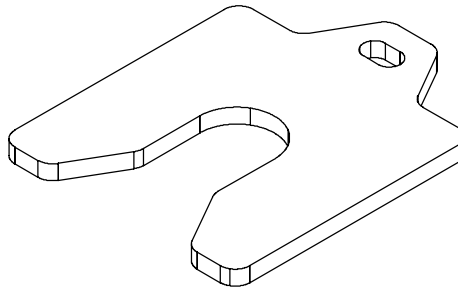
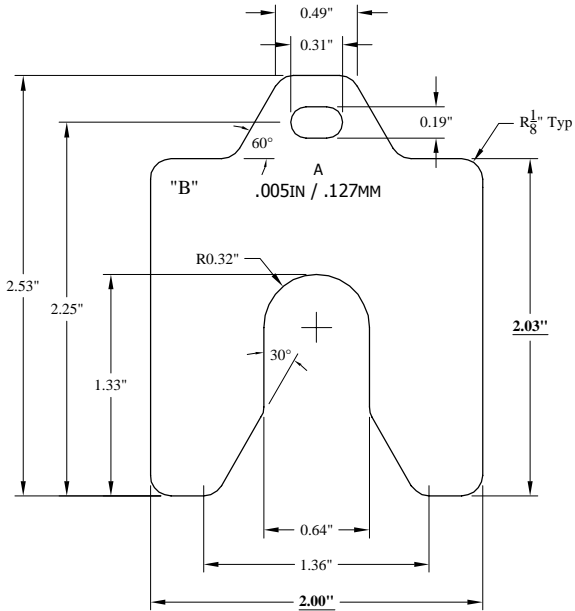


REVISIONS					
ZONE	REV	DESCRIPTION	DATE	BY	APPRVD:
ZONE	1	INITIAL RELEASE	6-6-07	DMG	CLL
B7	2	Added comment to optional etch or stamp "302" or "304" if material is SS302 or SS304	4-23-08	DMG	CLL
B7	3	See ECO 1011	3-19-09	DMG	CLL
D1	4	See ECO 1025	3-6-12	DMG	CLL
B3	5	See ECO 1026 - CHANGED TOLERACNE FOR THICKNESS	6-9-12	DGS	CLL
B3	6	See ECO 1030 - CHANGED TOLERACNE FOR THICKNESS	12-11-12	DMG	CLL
B7	7	See ECO 1041 - Newly developed Geometry, changed marking information and added barcode	10-16-14	DMG	JW



THK.	TOL.	P/N 316SS.	P/N 302/304 SS.	P/N STEEL.	FLATNESS.	ALLOWABLE BURR
.001	± .00008	316-MSA001.	MSA001.	————	N/A	.0005
.002	± .0001	316-MSA002.	MSA002.	————	N/A	.0005
.003	± .00015	316-MSA003.	MSA003.	————	N/A	.0005
.004	± .0002	316-MSA004.	MSA004.	————	N/A	.0005
.005	± .00025	316-MSA005.	MSA005.	————	N/A	.0005
.006	± .0003	316-MSA006.	MSA006.	————	N/A	.001
.007	± .00035	316-MSA007.	MSA007.	————	N/A	.001
.008	± .0004	316-MSA008.	MSA008.	————	N/A	.001
.009	± .00045	316-MSA009.	MSA009.	————	N/A	.001
.010	± .0005	316-MSA010.	MSA010.	————	N/A	.001
.012	± .0006	316-MSA012.	MSA012.	————	N/A	.001
.015	± .0005	316-MSA015.	MSA015.	————	N/A	.001
.020	± .0005	316-MSA020.	MSA020.	————	N/A	.001
.025	± .00075	316-MSA025.	MSA025.	————	N/A	.001
.031	± .004	316-MSA031.	MSA031.	————	N/A	.002
**.050	± .001	316-MSA050.	MSA050.	————	± .015	.002
**.062	± .006	316-MSA062.	MSA062.	————	± .015	.002
**.075	± .002	316-MSA075.	MSA075.	————	± .015	.002
**.100	± .002	316-MSA100.	MSA100.	————	± .015	.002
**.125	± .0025	316-MSA125.	MSA125.	————	± .015	.002
$\frac{3}{16}$ "	± .010	————	MSA-187-SS.	MSA-187-S	± .015	.005
$\frac{1}{4}$ "	± .012	————	MSA-250-SS.	MSA-250-S	± .015	.005
$\frac{3}{8}$ "	± .020	————	MSA-375-SS.	MSA-375-S	± .015	.005
$\frac{1}{2}$ "	± .025	————	MSA-500-SS.	MSA-500-S	± .015	.005
$\frac{5}{8}$ "	± .030	————	MSA-625-SS.	MSA-625-S	± .015	.005
$\frac{3}{4}$ "	± .035	————	MSA-750-SS.	MSA-750-S	± .015	.005
1"	± .050	————	MSA-100-SS.	MSA-100-S	± .015	.005



- NOTE:**
- *** = For 316 material, STD gauge thickness applies (±.006")
 - "B" = If 316 Shim, Etch or Stamp "316" Here.
 - Mark shim with shim size, thickness in standard and metric.

UNLESS OTHERWISE SPECIFIED, ALL DIMENSIONS ARE IN INCHES, AND TOLERANCES SHALL BE:	DWG TYPE		DETAIL - PART	
	SIGNATURES		DATE	
.0 = ±.030"	DWN:	DMG	MO-DA-YR	
.00 = ±.015"	APPRVD:	CLL	6-6-07	
.000 = ±.005"				
Fractions = $\pm \frac{1}{16}$ "				
Angular = ±30min				
MATL: See Table				
THK: See Table				



PART NUMBER:	See Table
DESCRIPTION:	MSA Shims
DWG No.:	MSA-XXX
SCALE:	1:1
SIZE:	
SHEET:	1 of 1
REVISION:	7