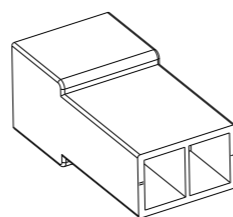
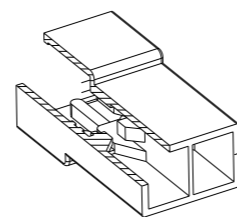
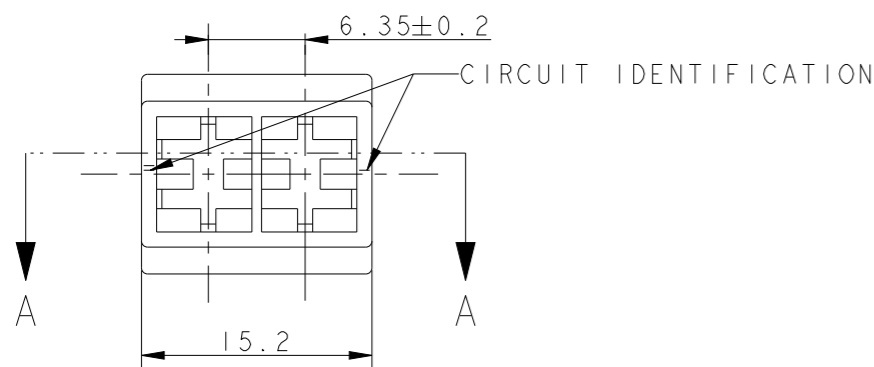


LOC
IR

DIST
-

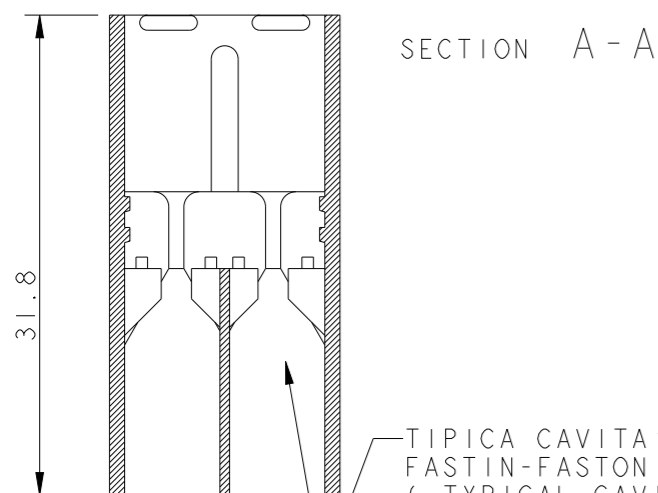
REVISIONS

| P | LTR | DESCRIPTION | DATE | DWN | APVD |
|-----|-----|----------------------------------|-----------|-----|------|
| AM9 | | CIRCUIT IDENTIFICATION CORRECTED | 30JUN2011 | PKS | RRP |
| ANI | | REVISED PER ECR-21-101990 | 19APR2021 | SS | EW |

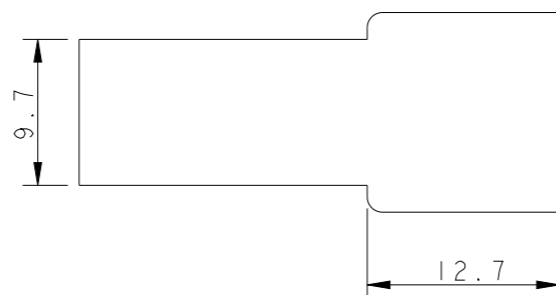
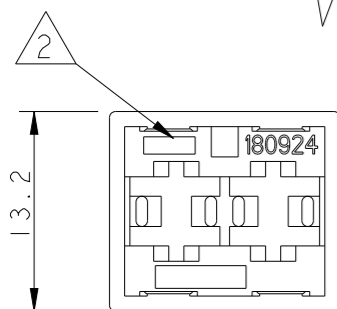


SCALE 1:1

- 1 MARCHIO (TRADEMARK / LOGO)
- 2 NUMERO DI IMPRONTA STAMPO (MOULD CAVITY IDENTIFICATION NO.)
- 3 RISERVATO PER TE JAPAN (RESTRICTED FOR TE JAPAN)
- 4 NON DISPONIBILE DA TE ITALIA (NO MORE AVAILABLE FROM TE ITALY)
- 5 RISERVATO PER TE DE FRANCE (RESTRICTED FOR TE DE FRANCE)
- 6 P/Ns 180924-0/-1/-5/2-...-0: DISPONIBILE DA TE GB VERSIONE CON CAVITA' ASIMMETRICHE, RISPETTIVAMENTE CON I P/Ns 1337024-1/-2/-3/-4. (P/Ns 180924-0/-1/-5/2-...-0: ASYMMETRIC CAVITIES VERSION AVAILABLE FROM TE GB RESPECTIVELY WITH P/Ns 1337024-1/-2/-3/-4).
- 7 ACCEPTED ONE RETENTION RIB FOR THE TOTAL LENGTH OF THE HOUSING ON BOTH SIDES.
- 8 OBSOLETE PARTS: OBSOLETE CIS STREAMLINING PER D.RENAUD/D.SINISI
- 9 INTERNAL FLASH INSIDE CAVITY (THIN AND FLEXIBLE THAT DO NOT COME OFF) ACCEPTABLE UP TO 0.15 mm. EXTERNAL FLASH ACCEPTABLE UP TO 0.4 mm



TIPICA CAVITA' PER TERMINALE TE FASTIN-FASTON SR. 6.35mm.
(TYPICAL CAVITY FOR TE CONTACT FASTIN-FASTON .250" SRS.)

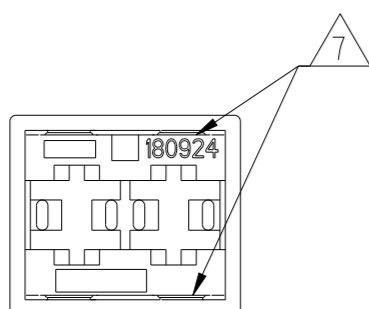


8 OBSOLETE

8 OBSOLETE

| NOTE | COLORE (COLOUR) | MATERIALE (MATERIAL) | REV. | NUMERO (PART NUMBER) |
|------|--------------------|--|------|-----------------------|
| 3 | NATURALE (NATURAL) | PA 6.6 (VERGINE) (PA 6.6, VIRGIN) | AM | 0-180924-0 |
| 4 | NATURALE (NATURAL) | PA 6.6 UL94-V0 (PA 6.6 UNFILLED UL94-V0) | AM | 4-180924-0 |
| 5 | NATURALE (NATURAL) | PA 6.6 (PA 6.6 UNFILLED) | AM | 3-280924-0 |
| 4 | VIOLETTO (VIOLET) | PA 6.6 (PA 6.6 UNFILLED) | AM | 0-180924-8 |
| 4 | MARRONE (BROWN) | | AM | 0-180924-6 |
| 6 | NERO (BLACK) | | AM | 0-180924-5 |
| 4 | GIALLO (YELLOW) | | AM | 0-180924-4 |
| 6 | ROSSO (RED) | | AM | 0-180924-1 |
| 6 | NATURALE (NATURAL) | | AM | 0-180924-0 |

ALTERNATIVE VIEW FOR RETENTION RIBS



| | | | |
|--|-----------|-------------------|--------------|
| THIS DRAWING IS A CONTROLLED DOCUMENT. | | DWN H. YAALI | 09JUL2002 |
| DIMENSIONS: mm | | CHK C. TARTARI | - |
| TOLERANCES UNLESS OTHERWISE SPECIFIED: | | APVD - | - |
| 0 PLC | ±- | PRODUCT SPEC | 108-20020 |
| 1 PLC | ±0.3 | APPLICATION SPEC | - |
| 2 PLC | ±- | WEIGHT | 2.2 g |
| 3 PLC | ±- | CUSTOMER DRAWING | SCALE 2:1 |
| 4 PLC | ±- | | SHEET 1 OF 1 |
| ANGLES | ±2° | | REV ANI |
| FINISH | SEE TABLE | | |

STE TE Connectivity

FASTIN-FASTON Connector,
.250 srs. TAB HOUSING,
2 POSITIONS

SIZE: A3 CAGE CODE: 00779 DRAWING NO: 180924 RESTRICTED TO: C=180924