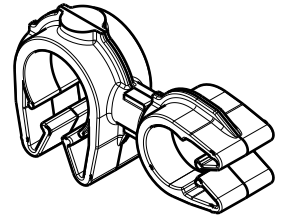
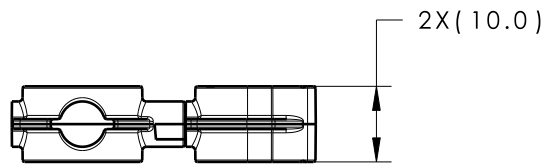
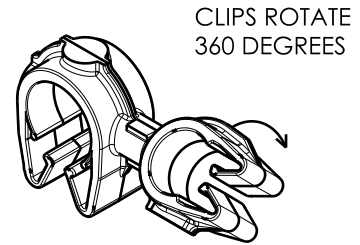
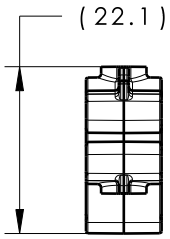
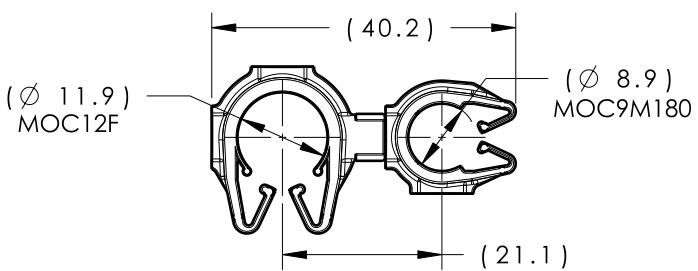


Revision Level			Revision Record	Changed	Date	Approved	Date
Drawing	State	Part					
00.0	Design Release		SEE ECN# 013856	TAT	5/17/17	EJH	5/17/17



ISOMETRIC VIEW



CLIPS ROTATE 360 DEGREES

ISOMETRIC VIEW ROTATED

TYPE	MOC12F	MOC9M180
HARNESS	11.5MM-13.0MM	8.5MM-10.0MM
HOSE	10.5MM-13.0MM	8.0MM-10.0MM
HARD PIPE/TUBE	12.0MM-13.8MM	9.0MM-10.0MM

*RECOMMENDED SIZES MAY DIFFER DEPENDING ON THE APPLICATION, PRODUCT REQUIREMENTS AND MATERIALS USED

UNS-UNIVERSAL NUMBER SYSTEM	TYPE	MOC12F			MOC9M180		
		DRAWING	MATERIAL	COLOR	DRAWING	MATERIAL	COLOR
156-02037	MOC12FMOC9M180	16-0319-000-CSU	PA66HIRHS	BLACK	16-0317-000-CSU	PA66HIRHS	BLACK

Material SEE CHART COLOR: SEE CHART	Units	millimeters	The copyright of this drawing is reserved by HellermannTyton. It is issued on condition that it is not reproduced, copied or disclosed to a third party, either wholly or in part, without the consent of HellermannTyton.	Drawn	TAT	4/4/17	Article/Type-No	SEE CHART	Scale	1:1
	Tolerance defined on each dimension	Approved		EJH	4/4/17	Title		12MM MODULAR OMEGA CLIP COUPLED TO A 9MM MODULAR OMEGA CLIP 180	Project Number	16-0330
		HellermannTyton			Drawing-No		PROTOTYPE : Phase	Format	AH	
							North America Email: corp@htamericas.com Web: www.hellermann.tyton.com			16-0330-329-CSU