

ITEM	PART#	DESCRIPTION	QTY	UOM
A	50579406	SL Crp Hsg G SR Pos Ltch 6Ckt Opt G	1	PC
B	16020086	SL Fem Crimp Term 22-24 Tin Reel x	6	PC
C	--	PAPER PRINTED PAPER WHITE	1	PC

FROM	TO	DESCRIPTION	COLOR
A1	--	1X22AWG DISC MPPE BK UL11028	BLACK
A2	--	1X22AWG DISC MPPE BK UL11028	BLACK
A3	--	1X22AWG DISC MPPE BK UL11028	BLACK
A4	--	1X22AWG DISC MPPE BK UL11028	BLACK
A5	--	1X22AWG DISC MPPE BK UL11028	BLACK
A6	--	1X22AWG DISC MPPE BK UL11028	BLACK

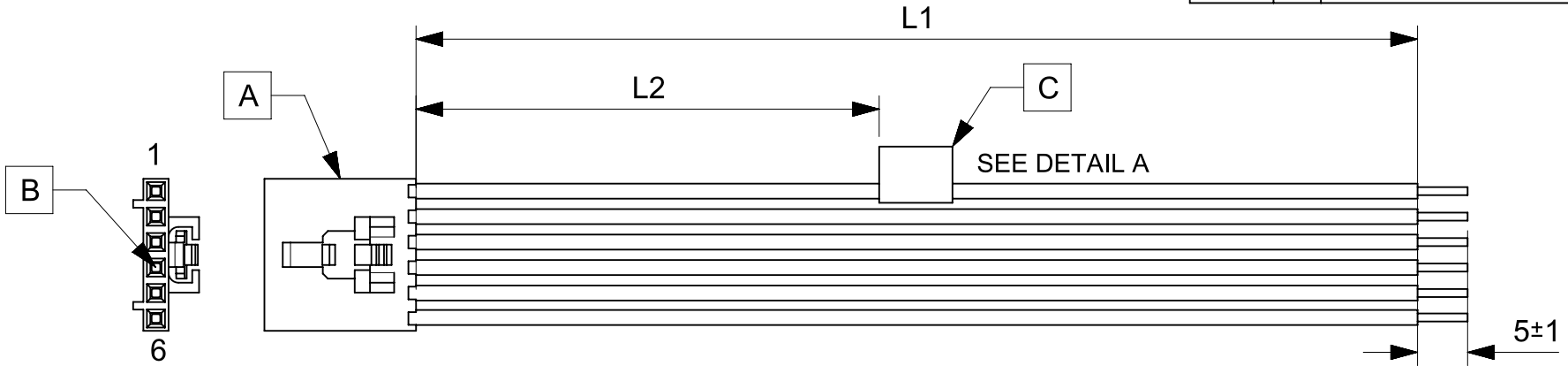


TABLE			
PART NUMBER	L1	L2	TITLE
2162711060	50±3	13 REF	SL POSITIVE LOCK R-S 6CKT 50MM Sn
2162711061	100±5	38 REF	SL POSITIVE LOCK R-S 6CKT 100MM Sn
2162711062	150±8	63 REF	SL POSITIVE LOCK R-S 6CKT 150MM Sn
2162711063	300±10	138 REF	SL POSITIVE LOCK R-S 6CKT 300MM Sn
2162711064	600±10	288 REF	SL POSITIVE LOCK R-S 6CKT 600MM Sn

- NOTES**
1. Connector view shown is from mating side.
 2. Free ends must be stripped, twisted & tinned. The length of tinning is 5±1mm. Tinning dia must be 0.9mm Max.
 3. Label text must be 2mm max. in height with Arial font.
 4. Label must be wrapped in Flag type on a single cable.

MOLEX P/N
MOLEX
BATCH WK/YR
DETAIL A

REVISION			
DATE	REV	DESCRIPTION	CHANGER
2020/05/05	A	INITIAL RELEASE	ARAJU

THIS DRAWING CONTAINS INFORMATION THAT IS PROPRIETARY TO MOLEX ELECTRONIC TECHNOLOGIES, LLC AND SHOULD NOT BE USED WITHOUT WRITTEN PERMISSION											
FUNCTIONAL SYMBOLS	DIMENSION UNITS	SCALE	CURRENT REV DESC:								
$\frac{F}{A} = 0$	mm	NTS	GENERAL TOLERANCES (UNLESS SPECIFIED)								
$\frac{F}{E} = 0$	ANGULAR TOL ± °		EC NO: 642836								
$\frac{F}{P} = 0$	4 PLACES ±		DRWN: ARAJU 2020/05/05								
DIVISIONAL SYMBOLS	3 PLACES ±		CHK'D: RDESAI01 2020/08/05								
	2 PLACES ±		APPR: RDESAI01 2020/08/05								
	1 PLACE ±		INITIAL REVISION:								
	0 PLACES ±		DRWN: ARAJU 2020/05/05								
			APPR: RDESAI01 2020/08/05								
DRAFT WHERE APPLICABLE MUST REMAIN WITHIN DIMENSIONS		THIRD ANGLE PROJECTION	DRAWING	SERIES	MATERIAL NUMBER	CUSTOMER	DOCUMENT NUMBER		DOC TYPE	DOC PART	REVISION
			A4-SIZE	216271	SEE TABLE	GENERAL MARKET	2162711060		PSD	000	A
							1 OF 1				