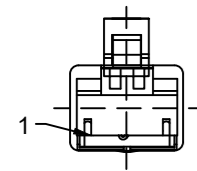


FRONT VIEW - MALE RJ45

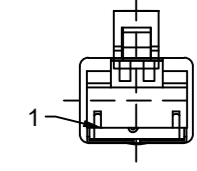


- 1-WHITE/ORANGE
- 2-ORANGE
- 3-WHITE/GREEN
- 6-GREEN

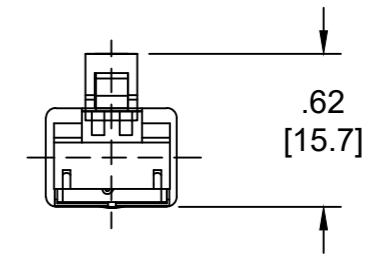
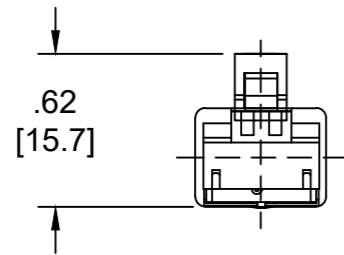
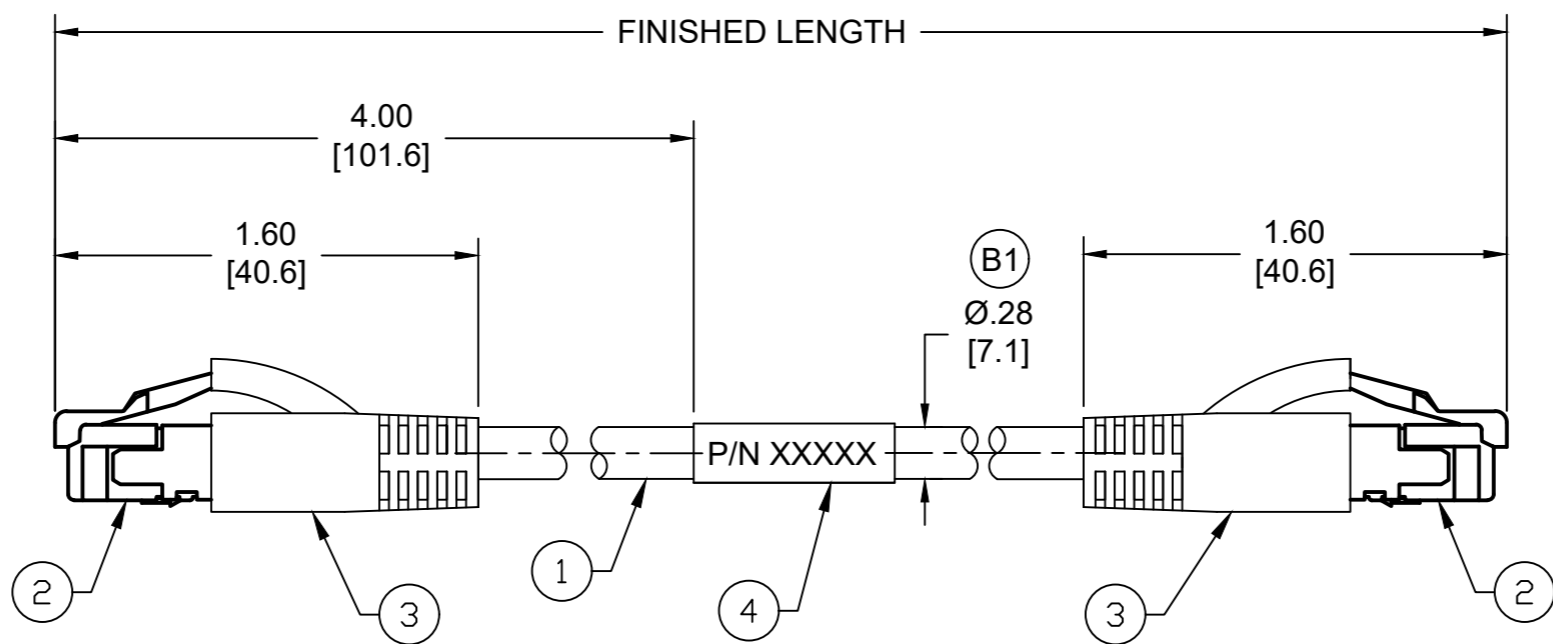
| MATERIAL NUMBER | ENGINEERING NUMBER | FINISHED LENGTH |
|-----------------|--------------------|-----------------|
| 1201088186 | E66A06006M005 | 0.5M [1FT 8 IN] |
| 1201088179 | E66A06006M400 | 40M[131FT 3 IN] |
| 1201080448 | E66A06006M800 | 80M[262FT 6 IN] |

(B1)

FRONT VIEW - MALE RJ45



- 1-WHITE/ORANGE
- 2-ORANGE
- 3-WHITE/GREEN
- 4-GREEN



- NOTES:
1. MATERIAL: AS NOTED
 2. FINISH: AS NOTED
 3. ELECTRICAL:
VOLTAGE: 30V AC/DC
CURRENT: 1.5A
 4. TEMP RATING: -20°TO +75°C (B1)
 5. UL LISTED FILE: E361772 (B1)
 6. ALL DIMENSIONS ARE FOR REFERENCE UNLESS TOLERANCED OR NOTED OTHERWISE

PART NUMBER LEGEND
E66A06006M005

- FINISHED LENGTH
M005 - 0.5 METER
M010 - 1 METER
M200 - 20 METER

(B1) CABLE LENGTH TOLERANCES

| | |
|--------------------------|-------------------------|
| <.3M [1FT]: | +19mm-0 [+ .75in-0] |
| .3 - .9M [1 - 3FT]: | +44.5mm-0 [+1.75in-0] |
| .9 - 1.8M [3 - 6FT]: | +55.6mm-0 [+2.19in-0] |
| 1.8 - 3.7M [6 - 12FT]: | +88.9mm-0 [+3.50in-0] |
| 3.7 - 7.3M [12 - 24FT]: | +165.1mm-0 [+6.50in-0] |
| 7.3-14.6M [24 - 48FT]: | +317.5mm-0 [+12.50in-0] |
| 14.6 - 30.5M [48-100FT]: | +622.3mm-0 [+24.50in-0] |
| OVER 30M [100FT]: | +2% OF FINISHED LENGTH |

| ITEM | DESCRIPTION | MATERIAL | FINISH |
|------|-------------------------|---------------|-------------|
| 4 | WRAP LABEL | VINYL | BLACK/WHITE |
| 3 | RJ45 BOOT, HOODED | PVC | BLACK |
| 2 | RJ45 PLUG | POLYCARBONATE | TRANSPARENT |
| 1 | CABLE, ETHERNET, 24 AWG | TPE JACKET | BLUE |

| | | | | |
|--|---|-------------------|--------------------------|----------------------------|
| FUNCTIONAL SYMBOLS F=0 C=0 P=0 | THIS DRAWING CONTAINS INFORMATION THAT IS PROPRIETARY TO MOLEX ELECTRONIC TECHNOLOGIES, LLC AND SHOULD NOT BE USED WITHOUT WRITTEN PERMISSION | | | |
| | DIMENSION UNITS | SCALE | | |
| | INCH/MM | NTS | EC NO: 703079 | |
| | GENERAL TOLERANCES (UNLESS SPECIFIED) | | DRWN: ABENJAMINLW | 2021/10/29 |
| 4 PLACES | ±---- | CHK'D: RSTONE | 2022/04/12 | |
| DIVISIONAL SYMBOLS | 3 PLACES | ±---- | APPR: BWOODMAN | 2022/04/18 |
| 1 PLACE | ±---- | INITIAL REVISION: | PRODUCT CUSTOMER DRAWING | |
| 0 PLACES | ±---- | DRWN: BARDEN | 2013/02/15 | DOCUMENT NUMBER |
| ANGULAR TOL ± ---- ° | APPR: JFMURPHY | 2013/04/18 | SD-120108-054 | DOC TYPE/DOC PART/REVISION |
| DRAFT WHERE APPLICABLE MUST REMAIN WITHIN DIMENSIONS | THIRD ANGLE PROJECTION | DRAWING | SERIES | MATERIAL NUMBER |
| | | B-SIZE | 120108 | CUSTOMER |
| | | | | GENERAL MARKET |
| | | | | SHEET NUMBER |
| | | | | 1 OF 1 |