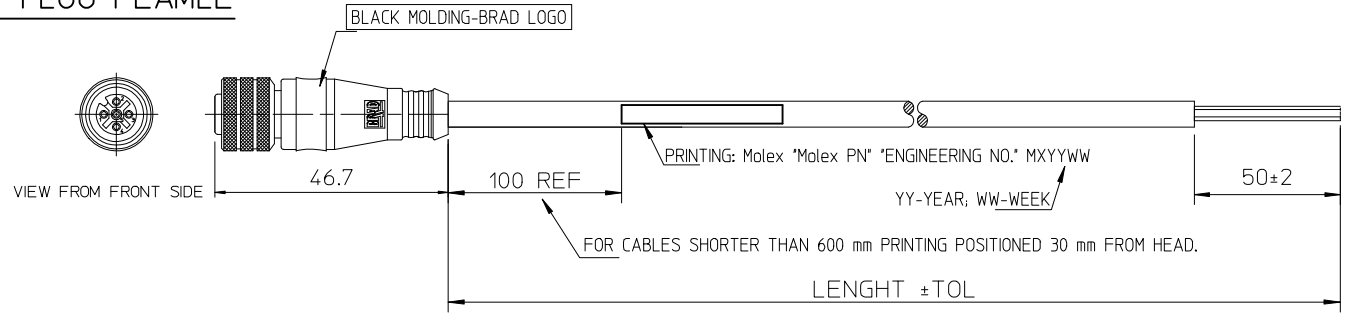


STRAIGHT PLUG FEAMLE

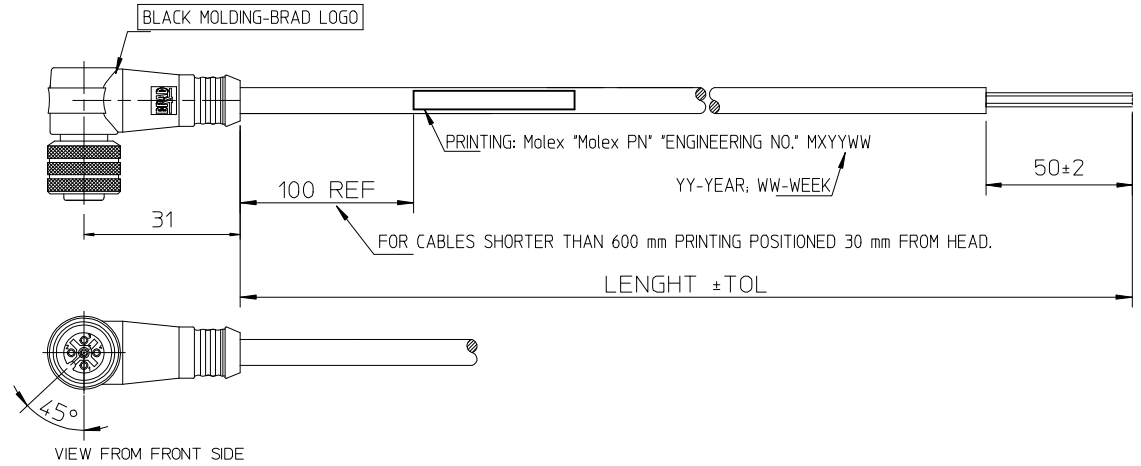
10 9 8 7 6 5 4 3 2 1

WIRING DIAGRAM M12 FEMALE:

3 WIRES		4 WIRES		5 WIRES	
VIEW FROM FRONT SIDE		VIEW FROM FRONT SIDE		VIEW FROM FRONT SIDE	
Pin	Wire color	Pin	Wire color	Pin	Wire color
1	Brown	1	Brown	1	Brown
2	-	2	White	2	White
3	Blue	3	Blue	3	Blue
4	Black	4	Black	4	Black
		5	Grey	5	Grey



90° - PLUG



ENGINEERING P/N KEY DECODING:

0	8	1	2	-	0	X	X	K	F	-	X	X	X	0	0
OVERMOULDED M12 FAMILY					NUMBER OF POLES		TYPE OF CONNECTOR		FEMALE CONNECTOR			LENGTH		TYPE OF CABLE	
					03-3 POLES 04-4 POLES 05-5 POLES		1-STRAIGHT 2-90°					01 = 1m 02 = 2 m 05 = 5 m 15 = 15 m 20 = 20 m 90 = 90 m		91 = 0.6 m 92 = 0.3 m 93 = 2.5 m 94 = 3.5 m 95 = 7.5 m 1 = PVC BLACK 0.25mm² 2 = PUR/PVC BLACK 0.25mm² F = PUR BLACK 0.5mm² S = PUR BLACK 0.34mm² D = PUR BLACK 22AWG UL	

CABLE LENGTH IN METER	TILL/DO	OVER - TILL	OVER - TILL	OVER	OVER	OVER
	1m	1-5m	5-10m	10m	20m	30m
MANUFACTURING TOLERANCES MM						
M8/M12 CABLE CONNECTOR MALE OR FEMALE	+20 -10	+25	+30	+30	+50	+60
M8/M12 CABLE CONNECTOR JUMPERCABLE	+20 -10	+25	+30	+30	+50	+60
M23 CABLE CONNECTOR MALE OR FEMALE			+50	+50	+50	+60
M23 CABLE CONNECTOR JUMPERCABLE			+50	+50	+50	+60

PRINTING UPDATE EC NO: IPG2015-1471 DRWN: JMARSZALEK 2013/09/25 CHKD: MSZWAJKOWSKI 2013/09/25 APPR: MIWASIECZKO 2015/03/20	QUALITY SYMBOLS ▽=0 ◻=0	GENERAL TOLERANCES (UNLESS SPECIFIED) mm INCH 4 PLACES ± --- ± --- 3 PLACES ± --- ± --- 2 PLACES ± --- ± --- 1 PLACE ± --- ± --- 0 PLACE ± --- ± --- ANGULAR ± --- ° DRAFT WHERE APPLICABLE MUST REMAIN WITHIN DIMENSIONS	DIMENSION STYLE MM ONLY DRAWN BY: HWALCZAK DATE: 2012/05/10 CHECKED BY: _____ DATE: _____ APPROVED BY: MDYSZEWSKA DATE: 2012/05/28 MATERIAL NO. SEE KEY	SCALE: --- DESIGN UNITS: METRIC FIRST ANGLE PROJECTION	TITLE: CSE M12 XP AC FE XM SE molex DOCUMENT NO. SD-120065-053 SHEET NO. 1 OF 1
	THIS DRAWING CONTAINS INFORMATION THAT IS PROPRIETARY TO MOLEX INCORPORATED AND SHOULD NOT BE USED WITHOUT WRITTEN PERMISSION				
	SIZE: A3				
	PRINTING UPDATE				

9 8 7 6 5 4 3 2 1

STRAIGHT PLUG FEAMLE

WIRING DIAGRAM M12 FEMALE:

3 WIRES

VIEW FROM FRONT SIDE

Pin	Wire color
1	Brown
2	-
3	Blue
4	Black

4 WIRES

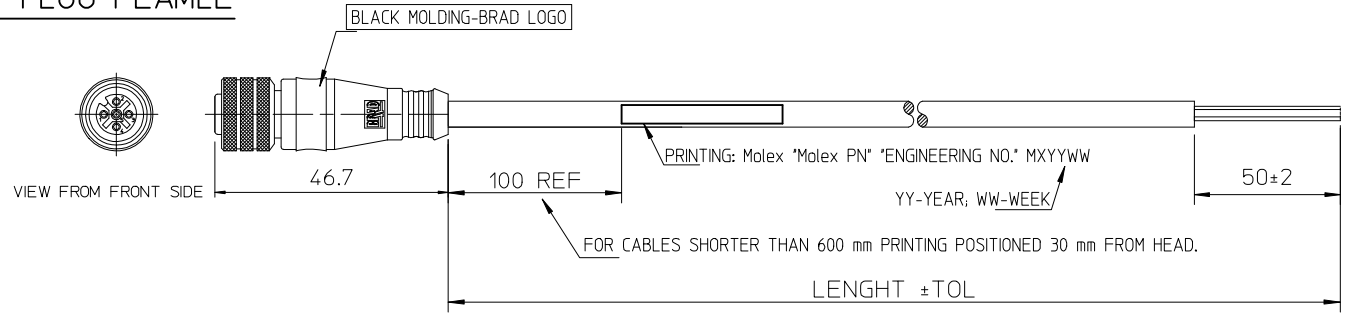
VIEW FROM FRONT SIDE

Pin	Wire color
1	Brown
2	White
3	Blue
4	Black

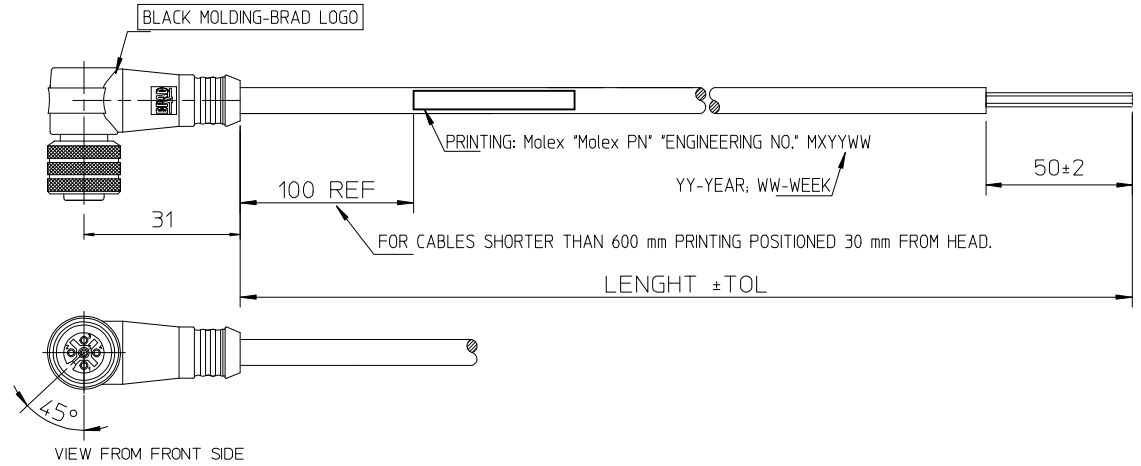
5 WIRES

VIEW FROM FRONT SIDE

Pin	Wire color
1	Brown
2	White
3	Blue
4	Black
5	Grey



90° - PLUG



ENGINEERING P/N KEY DECODING:

0	8	1	2	-	0	X	X	K	F	-	X	X	X	0	0
OVERMOULDED M12 FAMILY					NUMBER OF POLES		TYPE OF CONNECTOR		FEMALE CONNECTOR		LENGTH		TYPE OF CABLE		
					03-3 POLES 04-4 POLES 05-5 POLES		1-STRAIGHT 2-90°				01 = 1m 02 = 2m 05 = 5m 15 = 15m 20 = 20m 90 = 90m		91 = 0.6m 92 = 0.3m 93 = 2.5m 94 = 3.5m 95 = 7.5m		
											1 = PVC BLACK 0.25mm² 2 = PUR/PVC BLACK 0.25mm² F = PUR BLACK 0.5mm² S = PUR BLACK 0.34mm² D = PUR BLACK 22AWG UL				

TABLE OF TOLERANCES						
CABLE LENGTH IN METER	TILL/DO	OVER - TILL	OVER - TILL	OVER	OVER	OVER
	1m	1-5m	5-10m	10m	20m	30m
MANUFACTURING TOLERANCES MM						
M8/M12 CABLE CONNECTOR MALE OR FEMALE	+20 -10	+25	+30	+30	+50	+60
M8/M12 CABLE CONNECTOR JUMPERCABLE	+20 -10	+25	+30	+30	+50	+60
M23 CABLE CONNECTOR MALE OR FEMALE			+50	+50	+50	+60
M23 CABLE CONNECTOR JUMPERCABLE			+50	+50	+50	+60

<p>PRINTING UPDATE</p> <p>EC NO: IPG2015-1471</p> <p>DRWN: JMARSZALEK 2013/09/25</p> <p>CHKD: MSZWAJKOWSKI 2013/09/25</p> <p>APPR: MIWASIECZKO 2015/03/20</p>	<p>QUALITY SYMBOLS</p> <p>▽=0</p> <p>◻=0</p>	GENERAL TOLERANCES (UNLESS SPECIFIED)		DIMENSION STYLE MM ONLY		SCALE ---	DESIGN UNITS METRIC	<p>FIRST ANGLE PROJECTION</p>	
		4 PLACES	± ---	± ---	DRAWN BY HWALCZAK	DATE 2012/05/10	<p>TITLE CSE M12 XP AC FE XM SE</p>		
		3 PLACES	± ---	± ---	CHECKED BY DATE				
		2 PLACES	± ---	± ---	APPROVED BY DATE		<p>molex</p>		
1 PLACE	± ---	± ---	MDYSZEWSKA 2012/05/28		<p>DOCUMENT NO. SD-120065-053</p>				
0 PLACE	± ---	± ---	MATERIAL NO. SEE KEY		<p>SHEET NO. 1 OF 1</p>				
ANGULAR ±---°			DRAFT WHERE APPLICABLE MUST REMAIN WITHIN DIMENSIONS			<p>THIS DRAWING CONTAINS INFORMATION THAT IS PROPRIETARY TO MOLEX INCORPORATED AND SHOULD NOT BE USED WITHOUT WRITTEN PERMISSION</p>			